

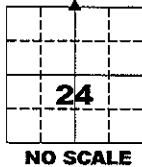
Marie Krutzfield, Recorder
Jones County, Iowa

PREPARED BY
CLARENCE J. WALTON, JONES COUNTY ENGINEER'S OFFICE, 19501 HWY. 64, ANAMOSA, IOWA, 52205 (319) 462-3785

UNITED STATES PUBLIC LAND SURVEY CORNER CERTIFICATE

LAND SURVEY MONUMENTS SITUATED IN SECTION 24, TOWNSHIP 84 NORTH,
RANGE 2 WEST OF THE 5TH PRINCIPAL MERIDIAN, JONES COUNTY, IOWA.

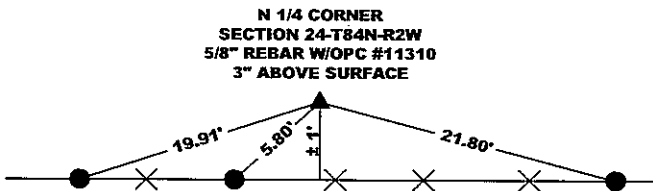
CORNER SECTION TOWNSHIP RANGE
N 1/4 24 84N 2W



OFFICE FILE NO.

STATE PLANE COORDINATE
NAD 83 IOWA NORTH
N 3501168.31
E 5593225.49

NOTE:
THE STATE PLANE COORDINATE AS
INDICATED IS FOR CONVENIENCE ONLY.
THE TIES AS SHOWN SHOULD BE USED TO
REPLACE THE CORNER, IF DESTROYED



ALL TIES FOR THIS CORNER
ARE ORANGE PLASTIC
SURVEY DISCS W/SPIKE
IN WOOD FENCE POST

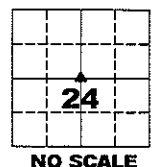
OPC - ORANGE PLASTIC CAP
() - RECORDED AS

PREVIOUSLY RECORDED IN BOOK N/A, PAGE N/A
MONUMENT DESCRIPTION AND HOW ESTABLISHED FOUND NO
EVIDENCE OF NORTH-SOUTH FENCE OR ANY OTHER EVIDENCE OF AN EAST-
WEST POSITION OF CORNER. EXISTING FENCE IS APPROXIMATELY 1' SOUTH
OF LINE BETWEEN E 1/4 & W 1/4 CORNERS OF SECTION 24-T84N-R2W. STRIP
MAP OF CMSLP&P RR LITTLE HELP ON CORNER LOCATION. PRESUMED
CORNER TO BE LOST. SET 5/8" REBAR W/OPC #11310 EQUIDISTANT AND
ON LINE BETWEEN E 1/4 & W 1/4 CORNERS. SET STEEL FENCE POST WITH
YELLOW "JONES COUNTY" SIGN AS WITNESS TO CORNER.



I hereby certify that this land surveying document
and the related survey work was performed by me
or under my direct personal supervision and that
I am a duly registered Land Surveyor under the laws
of the State of Iowa.
Signed: *Clarence J. Walton* 7/30/08
Clarence J. Walton, L.S.
My Registration Renewal Date is December 31, 2009
Iowa License Number 11310
Pages or sheets covered by this seal: 1 of 1.

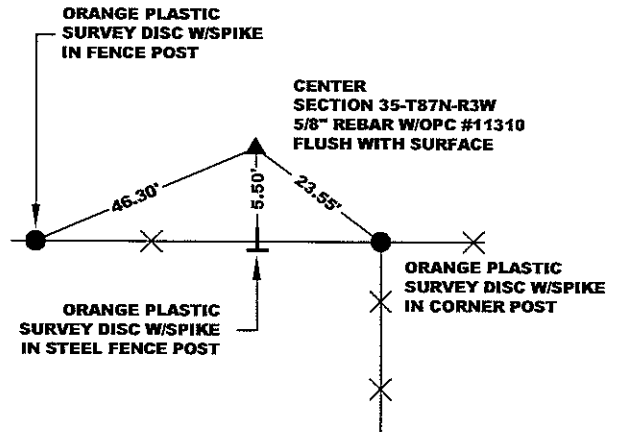
CORNER SECTION TOWNSHIP RANGE
CENTER 24 84N 2W



OFFICE FILE NO.

STATE PLANE COORDINATE
NAD 83 IOWA NORTH
N 3498508.14
E 5593306.71

NOTE:
THE STATE PLANE COORDINATE AS
INDICATED IS FOR CONVENIENCE ONLY.
THE TIES AS SHOWN SHOULD BE USED TO
REPLACE THE CORNER, IF DESTROYED



OPC - ORANGE PLASTIC CAP
() - RECORDED AS

PREVIOUSLY RECORDED IN BOOK N/A, PAGE N/A
MONUMENT DESCRIPTION AND HOW ESTABLISHED
COUNTY RECORDS INDICATE NO MONUMENT SET HERE. SET 5/8" REBAR
W/OPC #11310 AT INTERSECTION OF LINES BETWEEN N1/4 CORNER AND
S 1/4 CORNER AND BETWEEN WEST 1/4 CORNER AND EAST 1/4 CORNER OF
SECTION 24-T84N-R2W. SET STEEL POST W/YELLOW "JONES COUNTY" SIGN
AS WITNESS TO CORNER.

- A. THERE IS NO CERTIFICATE FOR THE CORNER ON FILE WITH THE RECORDER OF THE COUNTY IN WHICH THE CORNER IS LOCATED.
- B. THE CORNER MONUMENT HAS BEEN REPLACED OR MODIFIED.
- C. THE SURVEYOR IN RESPONSIBLE CHARGE OF THE LAND SURVEYING ACCEPTS A CORNER POSITION THAT DIFFERS FROM THAT SHOWN IN THE PUBLIC RECORDS OF THE COUNTY IN WHICH THE CORNER IS LOCATED.
- D. THE REFERENCE TIES REFERRED TO IN AN EXISTING PUBLIC RECORD NO LONGER EXIST.

CORNERS TO BE INDEXED

CORNER	SECTION	TOWNSHIP	RANGE
N 1/4 CORNER	24	84N	2W
S 1/4 CORNER	13	84N	2W
CENTER	24	84N	2W

JONES COUNTY ENGINEER'S OFFICE



19501 HWY. 64, ANAMOSA, IOWA 52205
(319) 462-3785