

COPY

Jones County Marie Krutzfield Recorder
 Fee Book 2012 2926
 10/08/2012 @0200PM # Pages 1
 ZSC SEC COR CERT
 Total Fees: \$0.00

PREPARED BY
 CLARENCE J. WALTON, JONES COUNTY ENGINEER'S OFFICE, 19501 HWY. 64, ANAMOSA, IOWA, 52205 (319) 462-3785

UPDATED UNITED STATES PUBLIC LAND
 SURVEY CORNER CERTIFICATE
 LAND SURVEY MONUMENTS SITUATED IN SECTION 24, TOWNSHIP 84 NORTH,
 RANGE 2 WEST OF THE 5TH PRINCIPAL MERIDIAN, JONES COUNTY, IOWA.

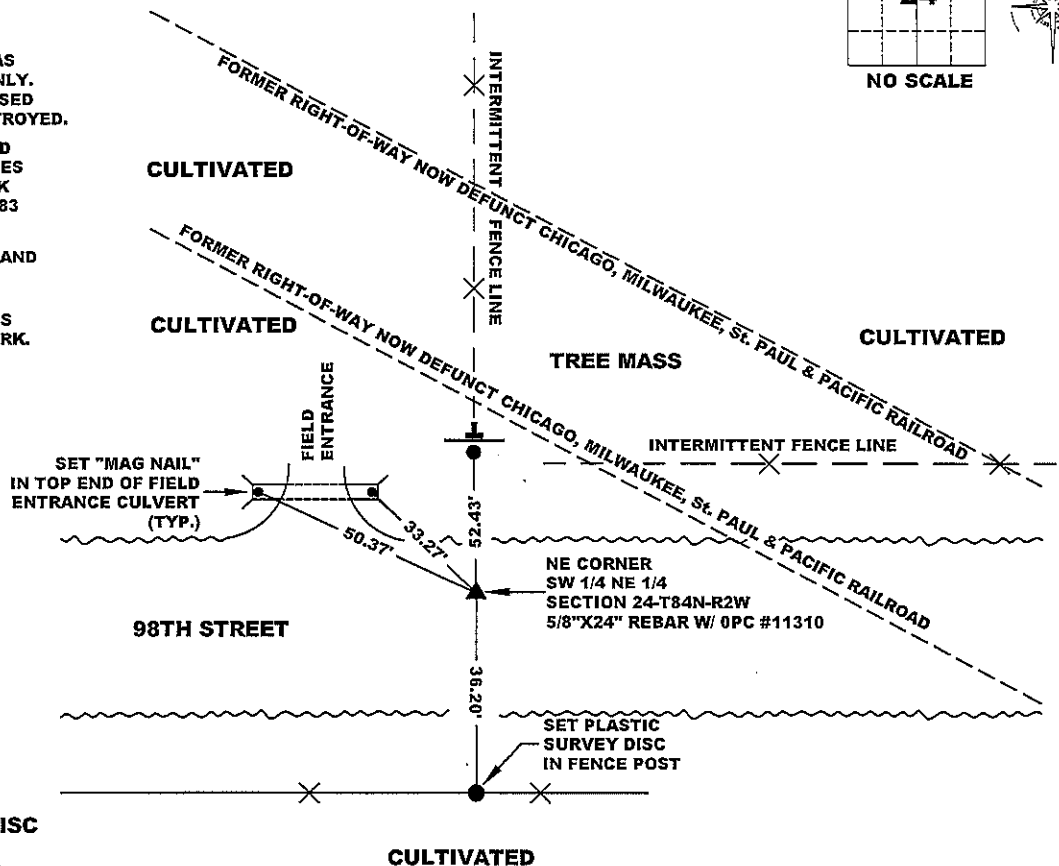
STATE PLANE COORDINATE
 NAD 83 IOWA NORTH
 N 3499889.11
 E 5594589.64

CORNER SECTION TOWNSHIP RANGE
 NE CORNER 24 T84N R2W
 SW 1/4 NE 1/4



NOTES:

- 1) THE STATE PLANE COORDINATES AS SHOWN ARE FOR CONVENIENCE ONLY. THE TIES AS SHOWN SHOULD BE USED TO REPLACE THE CORNER, IF DESTROYED.
- 2) COORDINATES AS SHOWN ARE GRID COORDINATES AND BASED ON JONES COUNTY G.P.S. CONTROL NETWORK WHICH IN TURN IS BASED ON NAD 83 IOWA NORTH DATUM.
- 3) ALL MEASUREMENTS ARE IN FEET AND DECIMALS THEREOF.
- 4) * GRID DISTANCE, BASED ON JONES COUNTY G.P.S. CONTROL NETWORK.



"SURVEY MARKER" SIGN



SURVEY DISC



LEGEND

- OPC ORANGE PLASTIC CAP
- () RECORDED AS
- SET STEEL FENCE POST W/ "SURVEY MARKER" SIGN AND 5/8" X 24" REBAR W/ OPC #11310.

PREVIOUSLY RECORDED IN RECORDER'S DOCUMENT 2011 2241

MONUMENT DESCRIPTION AND HOW ESTABLISHED RESET 5/8" X 24" REBAR W/ ORANGE PLASTIC CAP #11310 6" BELOW PRESENT ROAD SURFACE AT SAME COORDINATES AS PREVIOUSLY SET. ROAD CONSTRUCTION REMOVED PREVIOUSLY SET REBAR AND DESTROYED FORMER TIES. SET NEW TIES IN THE END OF A NEWLY EMPLACED FIELD ENTRANCE CULVERT AND SET STEEL FENCE POST WITH "SURVEY MARKER" SIGN WITH A 5/8" X 24" REBAR WITH AN ORANGE PLASTIC CAP #11310.

FIELD BOOK 375, PAGE 146. DATE OF SURVEY: 8/24/12



I hereby certify that this land surveying document and the related survey work was performed by me or under my direct personal supervision and that I am a duly registered Land Surveyor under the laws of the State of Iowa.

Signed: *Clarence J. Walton* 10/8/12
 Clarence J. Walton, L.S.
 My Registration Renewal Date is December 31, 2013
 Iowa License Number 11310
 Pages or sheets covered by this seal: 1 of 1.

- A. THERE IS NO CERTIFICATE FOR THE CORNER ON FILE WITH THE RECORDER OF THE COUNTY IN WHICH THE CORNER IS LOCATED.
- B. THE CORNER MONUMENT HAS BEEN REPLACED OR MODIFIED.
- C. THE SURVEYOR IN RESPONSIBLE CHARGE OF THE LAND SURVEYING ACCEPTS A CORNER POSITION THAT DIFFERS FROM THAT SHOWN IN THE PUBLIC RECORDS OF THE COUNTY IN WHICH THE CORNER IS LOCATED.
- D. THE REFERENCE TIES REFERRED TO IN AN EXISTING PUBLIC RECORD NO LONGER EXIST.
- E. EXISTING CORNER TIES UPDATED.

CORNERS TO BE INDEXED

CORNER	SECTION	TOWNSHIP	RANGE
NE CORNER	24	84N	2W
SW 1/4 NE 1/4	24	84N	2W
SE CORNER	24	84N	2W
NW 1/4 NE 1/4	24	84N	2W
SW CORNER	24	84N	2W
NE 1/4 NE 1/4	24	84N	2W
NW CORNER	24	84N	2W
SE 1/4 NE 1/4	24	84N	2W

JONES COUNTY ENGINEER'S OFFICE



19501 HWY. 64, ANAMOSA, IOWA 52205
 (319) 462-3785

COPY

Jones County Marie Krutzfield Recorder
 Fee Book 2011 2241
 09/02/2011 @0253PM # Pages 1
 ZSC SEC COR CERT
 Total Fees: \$0.00

PREPARED BY
 CLARENCE J. WALTON, JONES COUNTY ENGINEER'S OFFICE, 19501 HWY. 64, ANAMOSA, IOWA, 52205 (319) 462-3785

UNITED STATES PUBLIC LAND SURVEY CORNER CERTIFICATE

LAND SURVEY MONUMENTS SITUATED IN SECTION 24, TOWNSHIP 84 NORTH, RANGE 2 WEST OF THE 5TH PRINCIPAL MERIDIAN, JONES COUNTY, IOWA.

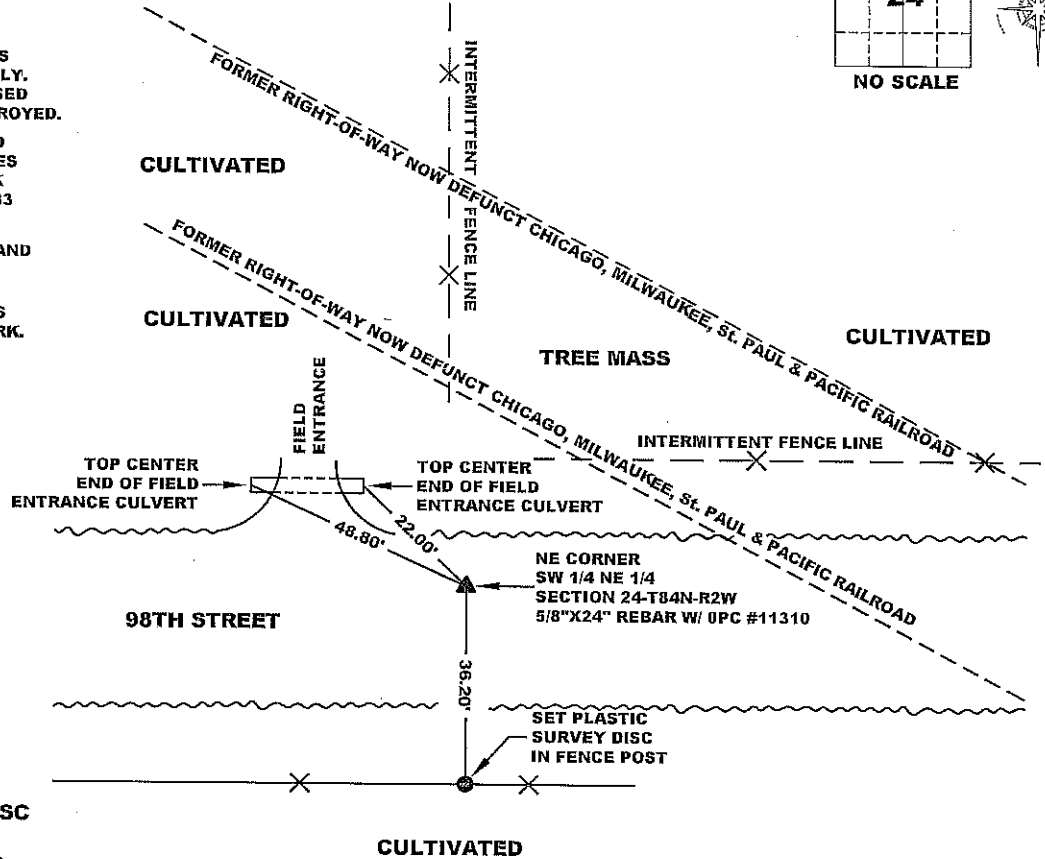
STATE PLANE COORDINATE
 NAD 83 IOWA NORTH
 N 3499889.11
 E 5594589.64

CORNER SECTION TOWNSHIP RANGE
 NE CORNER 24 T84N R2W
 SW 1/4 NE 1/4

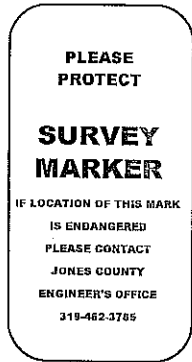


NOTES:

- 1) THE STATE PLANE COORDINATES AS SHOWN ARE FOR CONVENIENCE ONLY. THE TIES AS SHOWN SHOULD BE USED TO REPLACE THE CORNER, IF DESTROYED.
- 2) COORDINATES AS SHOWN ARE GRID COORDINATES AND BASED ON JONES COUNTY G.P.S. CONTROL NETWORK WHICH IN TURN IS BASED ON NAD 83 IOWA NORTH DATUM.
- 3) ALL MEASUREMENTS ARE IN FEET AND DECIMALS THEREOF.
- 4) * GRID DISTANCE, BASED ON JONES COUNTY G.P.S. CONTROL NETWORK.



"SURVEY MARKER" SIGN



SURVEY DISC



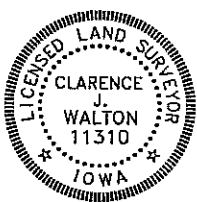
LEGEND

- OPC ORANGE PLASTIC CAP
- () RECORDED AS

PREVIOUSLY RECORDED IN N/A

MONUMENT DESCRIPTION AND HOW ESTABLISHED SET 5/8"X24" REBAR W/ ORANGE PLASTIC CAP #11310 8" BELOW PRESENT ROAD SURFACE ON INTERSECTION OF A LINE FROM THE MID-POINT OF THE NORTH LINE OF THE NE 1/4 OF SECTION 24-T84N-R2W TO THE MID-POINT OF THE SOUTH LINE OF SAID NE 1/4 WITH A LINE FROM THE MID-POINT OF THE WEST LINE OF SAID NE 1/4 TO THE MID-POINT OF THE EAST LINE OF SAID NE 1/4. IT IS LIKELY THAT THIS MONUMENT AND THESE TIES WILL LIKELY BE DESTROYED BY UP-COMING CONSTRUCTION IN THE NEAR FUTURE.

FIELD BOOK 375, PAGE 149. DATE OF SURVEY: 8/31/11



I hereby certify that this land surveying document and the related survey work was performed by me or under my direct personal supervision and that I am a duly registered Land Surveyor under the laws of the State of Iowa.

Signed: *Clarence J. Walton* 9/2/11
 Clarence J. Walton, L.S.
 My Registration Renewal Date is December 31, 2011
 Iowa License Number 11310
 Pages or sheets covered by this seal: 1 of 1.

- A. THERE IS NO CERTIFICATE FOR THE CORNER ON FILE WITH THE RECORDER OF THE COUNTY IN WHICH THE CORNER IS LOCATED.
- B. THE CORNER MONUMENT HAS BEEN REPLACED OR MODIFIED.
- C. THE SURVEYOR IN RESPONSIBLE CHARGE OF THE LAND SURVEYING ACCEPTS A CORNER POSITION THAT DIFFERS FROM THAT SHOWN IN THE PUBLIC RECORDS OF THE COUNTY IN WHICH THE CORNER IS LOCATED.
- D. THE REFERENCE TIES REFERRED TO IN AN EXISTING PUBLIC RECORD NO LONGER EXIST.
- E. EXISTING CORNER TIES UPDATED.

CORNERS TO BE INDEXED

CORNER	SECTION	TOWNSHIP	RANGE
NE CORNER	24	84N	2W
SW 1/4 NE 1/4	24	84N	2W
SE CORNER	24	84N	2W
NW 1/4 NE 1/4	24	84N	2W
SW CORNER	24	84N	2W
NE 1/4 NE 1/4	24	84N	2W
NW CORNER	24	84N	2W
SE 1/4 SE 1/4	24	84N	2W

JONES COUNTY ENGINEER'S OFFICE



19501 HWY. 64, ANAMOSA, IOWA 52205
 (319) 462-3785