

2006 2778

FILED
RECORDERS OFFICE
JONES COUNTY IOWA

06 JUL 21 AM 11:25

MARIE KRUTZFIELD
RECORDER

J.D. Tjepkes, LS. JONES COUNTY ENGINEER'S OFFICE, 19501 HWY. 64, ANAMOSA, IOWA, 52205 (319)462-3785

UNITED STATES PUBLIC LAND SURVEY CORNER CERTIFICATE

LAND SURVEY MONUMENTS SITUATED IN SECTION 28, TOWNSHIP 84
NORTH, RANGE 2 WEST OF THE 5TH P.M., JONES COUNTY, IOWA

CORNERS TO BE INDEXED

CORNER	SECTION	TOWNSHIP	RANGE
NE COR	28	84N	2W

OFFICE FILE NO. 84228e_071106.tif

FIELD NOTES:
BK #372
P 78
6-13-2006

PREVIOUSLY RECORDED IN BOOK NA, PAGE NA
MONUMENT DESCRIPTION AND HOW ESTABLISHED

PER DOT TIES ON RECORD AT JONES COUNTY ENGINEER'S OFFICE, FD BERNSTEN MONUMENT WITH MAGNET. LOWERED MONUMENT AND SET 5/8"X24" REBAR W/CAP #14807 BURIED 8" BELOW PRESENT ROADTOP. TIES AS INDICATED. NE CORNER SECTION 28 T84N R2W

CORNERS TO BE INDEXED

CORNER	SECTION	TOWNSHIP	RANGE
N1/4	28	84N	2W

OFFICE FILE NO. 84228c_071106.tif

FIELD NOTES:
BK #372
P 78
6-12-2006

PREVIOUSLY RECORDED IN BOOK NA, PAGE NA
MONUMENT DESCRIPTION AND HOW ESTABLISHED

PER TIES ON RECORD AT THE JONES COUNTY ENGINEER'S OFFICE FROM LS #8165 (MEISNER), FOUND 1/2" P/CAP IN NORTH ROAD DITCH HWY #64 AT APPROXIMATE STATION 577+50 - 89' LEFT, FLUSH WITH GROUND. RETIED AS INDICATED. N1/4 SECTION 28 T84N R2W.

CORNERS TO BE INDEXED

CORNER	SECTION	TOWNSHIP	RANGE
NW COR	28	84N	2W

OFFICE FILE NO. 84229e_071106.tif

FIELD NOTES:
BK #372
P 77
6-13-2006

PREVIOUSLY RECORDED IN BOOK NA, PAGE NA
MONUMENT DESCRIPTION AND HOW ESTABLISHED

PER TIES ON FILE AT JONES COUNTY ENGINEER'S OFFICE, FILED BY LS#8165 (MEISNER) IN 1992, FOUND 5/8" REBAR BURIED 8". RETIED AS INDICATED. NW CORNER SECTION 28 T84N R2W.

CORNERS TO BE INDEXED

CORNER	SECTION	TOWNSHIP	RANGE
W1/4 COR	28	84N	2W

OFFICE FILE NO. 84229o_071106.tif

FIELD NOTES:
BK #372
P 77
6-23-2006

HO # 8582
HO # 8406

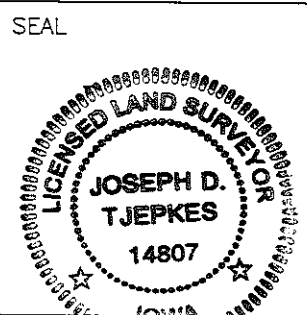
PREVIOUSLY RECORDED IN BOOK NA, PAGE NA
MONUMENT DESCRIPTION AND HOW ESTABLISHED

SET 5/8"X48" REBAR W/CAP #14807 IN EAST ROAD DITCH ON LINE BETWEEN FD NW CORNER AND FD SW CORNER SECTION 28 AND ON LINE EAST FROM PLAT OF SURVEY RECORDED AT JONES COUNTY RECORDER'S OFFICE BK 1 PAGE 8, FILED BY LS#8581 (DILLON). TIES AS INDICATED FOR W1/4 CORNER SECTION 28 T84N R2W.

I hereby declare that this plat, survey or report was made by me or under my direct personal supervision and that I am a duly registered Land Surveyor under the laws of the State of Iowa.

Signed: *[Signature]* 7-21-06

Joseph D. Tjepkes L.S. Iowa Reg. No. 14807
My Registration Renewal Date is December 31, 2006



J.D. Tjepkes LS 14807
JONES COUNTY
ENGINEER'S OFFICE

19501 HWY. 64,
ANAMOSA, IOWA,
52205 (319)462-3785

SECTION CORNER CERTIFICATE

OF
 LAND SURVEY MONUMENTS SITUATED IN SECTION 21, TOWNSHIP 84 NORTH,
 RANGE 2 WEST, OF THE FIFTH PRINCIPAL MERIDIAN, JONES, COUNTY, IOWA.

PREVIOUSLY RECORDED IN BOOK _____ AT PAGE _____.

FOR RECORDER'S USE

REASON FOR PREPARING CERTIFICATE:

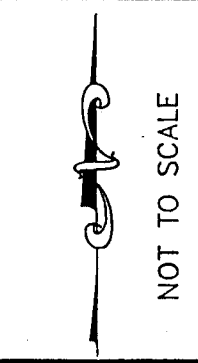
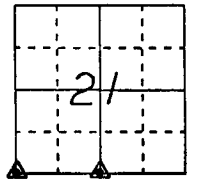
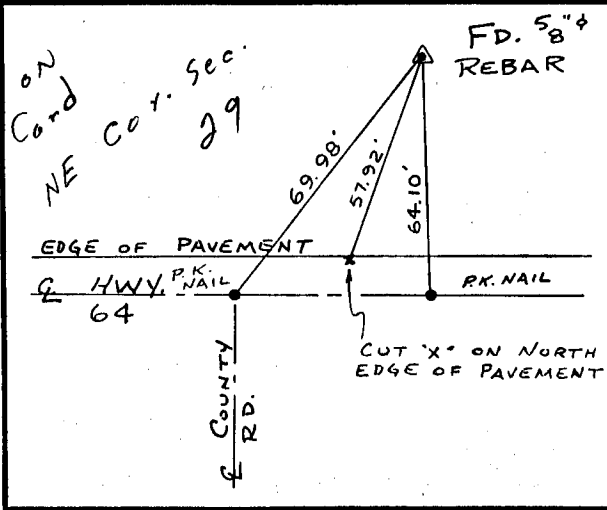
- A) THERE IS NO CERTIFICATE FOR THE CORNER ON FILE WITH THE RECORDER OF THE COUNTY IN WHICH THE CORNER IS LOCATED.
- B) CORNER POSITION DIFFERS FROM THAT SHOWN IN THE PUBLIC RECORDS OF THE COUNTY IN WHICH THE CORNER IS LOCATED.
- C) THE CORNER MONUMENT HAS BEEN REPLACED OR MODIFIED.
- D) THE REFERENCE TIES REFERRED TO IN AN EXISTING PUBLIC RECORD ARE INCORRECT.

MONUMENT DESCRIPTION AND REMARKS:

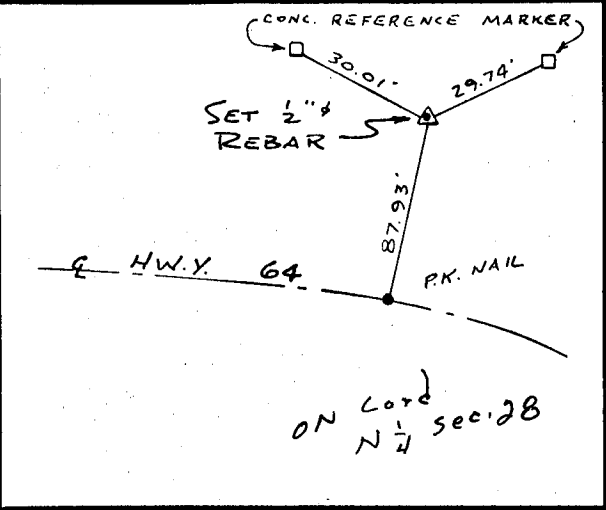
S.W. CORNER SECTION 21-T84N-R2W FOUND 5" # REBAR 6"
 DEEP NORTH OF HWY. # 64
 S'4 CORNER SECTION 21-T84N-R2W SET 2" # REBAR WITH L.S.
 CAP # 8165 FLUSH WITH GROUND

RECOVERY TIE DRAWING

S.W. COR. 21-84-2



S'4 COR. 21-84-2



I, GLEN D. MEISNER, CERTIFY THAT THE CORNER LOCATION(S) SHOWN ON THIS RECORD WERE DETERMINED BY ME OR UNDER MY DIRECTION AND CONTROL AND THAT THIS U.S. PUBLIC LAND SURVEY MONUMENT RECORD IS CORRECT AND COMPLETE TO THE BEST OF MY KNOWLEDGE AND BELIEF.



Glen D. Meisner 3-2-92
 GLEN D. MEISNER L.S. NO 8165 DATE

DZM:ARL	△ GOVERNMENT CORNER ○ 5/8" TIE PIN SET --- CENTERLINE - - - EXISTING FENCE LINE - - - R.O.W. LINE	SHEET TITLE: U.S. PUBLIC LAND SURVEY RECORD PROJECT TITLE: CHRISTIANSON SURVEY	HALL AND HALL ENGINEERS, INC. 226 29TH STREET DRIVE S.E. CEDAR RAPIDS, IOWA 52403 319-362-9548
	DW: R.W.B. KTO: G.D.M. APP:	DATE: 2-18-92 SCALE: NONE	