

Instrument #: 2017-0696

03/17/2017 10:53:07 AM Total Pages: 1

ZSC SECTION CORNER CERTIFICATE

Recording Fee: \$7.00 Transfer Tax: \$0

Sheri L. Jones, Recorder, Jones County Iowa



PREPARED BY

STEPHEN MICHAEL BRAIN, BRAIN ENGINEERING, INC., 1540 MIDLAND COURT NE, CEDAR RAPIDS, IOWA PH. (319) 294-9424

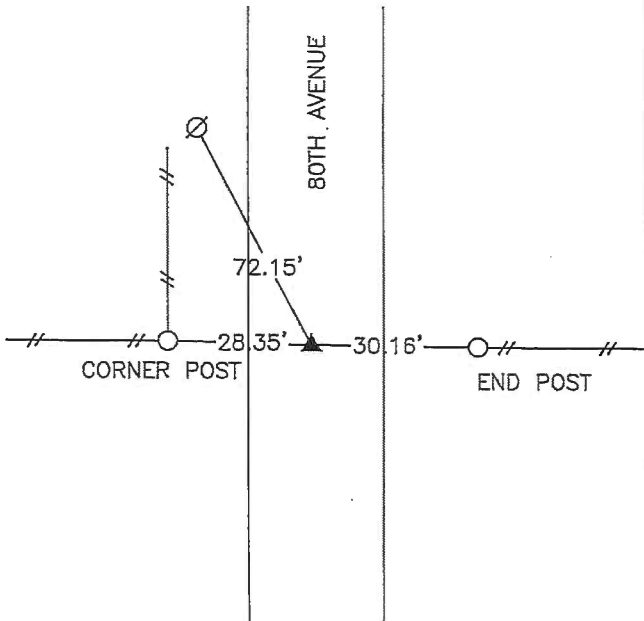
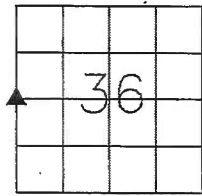
# UNITED STATES PUBLIC LAND SURVEY CORNER CERTIFICATE

LAND SURVEY MONUMENTS SITUATED IN SECTION 36, TOWNSHIP 85 NORTH RANGE 2 WEST OF THE 5TH P.M., JONES COUNTY, IOWA.

NO SCALE



W 1/4 CORNER



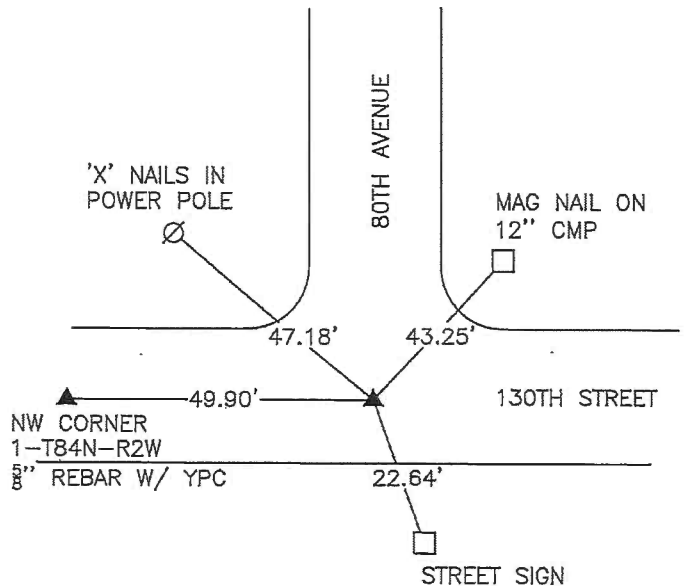
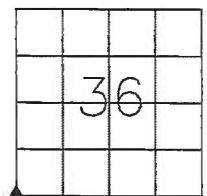
ALL TIES FOUND PLASTIC SURVEY TAGS

PREVIOUSLY RECORDED IN BOOK \_\_\_\_\_ PAGE \_\_\_\_\_  
MONUMENT DESCRIPTION AND HOW ESTABLISHED:  
FOUND 1/2" REBAR 6" BELOW ROAD SURFACE.

NO SCALE



SW CORNER



PREVIOUSLY RECORDED IN BOOK \_\_\_\_\_ PAGE \_\_\_\_\_  
MONUMENT DESCRIPTION AND HOW ESTABLISHED:  
FOUND 1/2" REBAR 4" BELOW ROAD SURFACE.



I hereby certify that this land surveying document and the related survey work was performed by me or under my direct personal supervision, and that I am a duly licensed Land Surveyor under the laws of the State of Iowa.

Signed: *[Signature]* Date: 3/15/17  
Stephen Michael Brain, L.S.

My License Renewal Date is December 31, 2018  
License Number 9647  
Pages or sheets covered by this seal: 1/1

- A.THERE IS NO CERTIFICATE FOR THE CORNER ON FILE WITH THE RECORDER OF THE COUNTY IN WHICH THE CORNER IS LOCATED
- B.THE SURVEYOR IN RESPONSIBLE CHARGE OF THE LAND SURVEYING ACCEPTS A CORNER POSITION WHICH DIFFERS FROM THAT SHOWN IN THE PUBLIC RECORDS OF THE COUNTY IN WHICH THE CORNER IS LOCATED.
- C.THE CORNER MONUMENT IS REPLACED OR MODIFIED IN ANY WAY.
- D.THE REFERENCE TIES REFERRED TO IN AN EXISTING PUBLIC RECORD ARE NOT CORRECT.

### CORNERS TO BE INDEXED

CORNER	SECTION	TOWNSHIP	RANGE
W 1/4 CORNER	36	T85N	R2W
SW CORNER	36	T85N	R2W

BRAIN ENGINEERING, INC.

1540 MIDLAND COURT NE  
CEDAR RAPIDS, IOWA 52402  
(319) 294-9424

284917-20

MAB 3/15/17

2001 2750

FILED  
RECORDERS OFFICE  
JONES COUNTY IOWA

01 AUG -6 AM 8:48

MARIE KRUTZFIELD *600 Pd*  
RECORDER

J.D. TJEPKES, 23428 RIDGE RD. ANAMOSA, IOWA, 52205 (319)462-6067

# UNITED STATES PUBLIC LAND SURVEY CORNER CERTIFICATE

LAND SURVEY MONUMENTS SITUATED IN SECTION 2, TOWNSHIP 84  
NORTH, RANGE 2 WEST OF THE 5TH P.M., JONES COUNTY, IOWA

**953 CORNERS TO BE INDEXED**

CORNER	SECTION	TOWNSHIP	RANGE
NE	2	84N	2W

FOUND 1/2" REBAR SE COR. SEC. 35, T85N, R2W

PREVIOUSLY RECORDED IN BOOK N/A, PAGE N/A  
MONUMENT DESCRIPTION AND HOW ESTABLISHED SET 5/8"x24" REBAR WITH YELLOW CAP LS 14807 AT A PROPORTIONATE DISTANCE FROM THE NW. COR. SEC. 2, T84N, R2W TO THE SE. COR. SEC. 35, T85N, R2W TO ESTABLISH THE NE. COR. SEC. 2, T84N, R2W OF THE 5TH P.M., JONES COUNTY, IOWA. SET TIE POINTS AS INDICATED.

**954 CORNERS TO BE INDEXED**

CORNER	SECTION	TOWNSHIP	RANGE
N-1/4	2	84N	2W

SET 5/8"x24" REBAR WITH YELLOW CAP LS 14807, N-1/4, SEC. 2, T84N, R2W

PREVIOUSLY RECORDED IN BOOK N/A, PAGE N/A  
MONUMENT DESCRIPTION AND HOW ESTABLISHED SET 5/8"x24" REBAR WITH YELLOW CAP LS 14807 AT A PROPORTIONATE DISTANCE FROM THE NW. COR. SEC. 2 TO THE NE. COR. SEC. 2 TO ESTABLISH THE NORTH QUARTER COR. SEC. 2, T84N, R2W OF THE 5TH P.M., JONES COUNTY, IOWA. SET REFERENCE POINTS AND TIED OUT AS INDICATED.

**955 CORNERS TO BE INDEXED**

CORNER	SECTION	TOWNSHIP	RANGE
NORTHWEST	2	84N	2W

NOTE: ALL TIES AS INDICATED ARE SLOPE MEASURED.

PREVIOUSLY RECORDED IN BOOK ", PAGE 59  
MONUMENT DESCRIPTION AND HOW ESTABLISHED FOUND 5/8"x30" REBAR 0.3' BELOW ROAD SURFACE PER ORRIS'S FIRST ADDITION TO JONES COUNTY. NORTHWEST CORNER SECTION 2, T84N, R2W, 5TH PRINCIPAL MERIDIAN, JONES COUNTY, IOWA. SET REFERENCE POINTS AND TIED OUT AS INDICATED.

**956 CORNERS TO BE INDEXED**

CORNER	SECTION	TOWNSHIP	RANGE
SOUTHWEST	2	84N	2W

PREVIOUSLY RECORDED IN BOOK N/A, PAGE N/A  
MONUMENT DESCRIPTION AND HOW ESTABLISHED SET 5/8"x24" REBAR WITH YELLOW CAP LS 14807 IN CL PAVEMENT PER COUNTY ENGINEER'S E-23 ROAD PLANS AT STATION 1058+68. SET REFERENCE POINTS AND TIED OUT AS INDICATED. SW. COR. SECTION 2, T84N, R2W, 5TH PRINCIPAL MERIDIAN, JONES COUNTY, IOWA

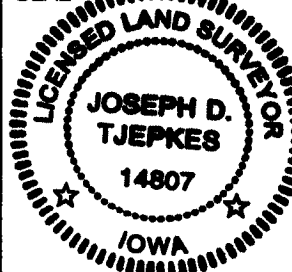
I hereby declare that this plat, survey or report was made by me or under my direct personal supervision and that I am a duly registered Land Surveyor under the laws of the State of Iowa.

Signed:

*Joseph D. Tjepkes* 7-30-02

Joseph D. Tjepkes L.S. Iowa Reg. No. 14807  
My Registration Renewal Date is December 31, 2002

SEAL



J.D. TJEPKES LS 14807  
23428 RIDGE ROAD  
ANAMOSA, IOWA 52205

# SECTION CORNER CERTIFICATE

OF  
 LAND SURVEY MONUMENTS SITUATED IN SECTION 35, TOWNSHIP 85 NORTH,  
 RANGE 2 WEST, OF THE FIFTH PRINCIPAL MERIDIAN, JONES, COUNTY, IOWA.

PREVIOUSLY RECORDED IN BOOK \_\_\_\_\_ AT PAGE \_\_\_\_\_

FOR RECORDER'S USE

REASON FOR PREPARING CERTIFICATE:

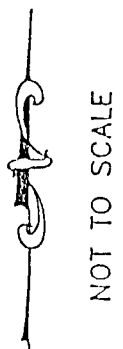
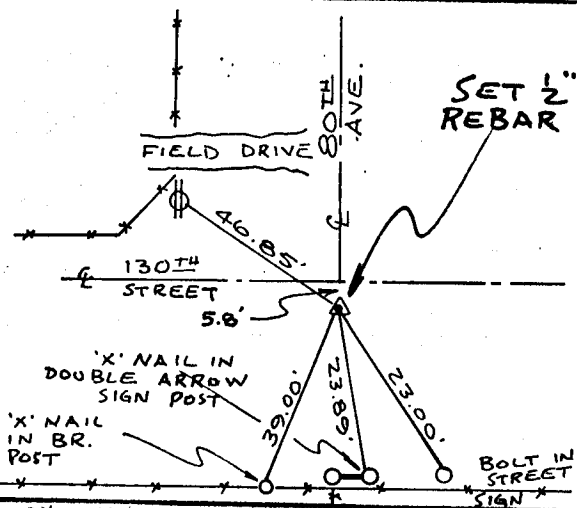
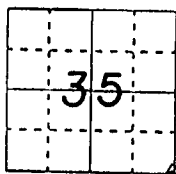
- A) THERE IS NO CERTIFICATE FOR THE CORNER ON FILE WITH THE RECORDER OF THE COUNTY IN WHICH THE CORNER IS LOCATED.
- B) CORNER POSITION DIFFERS FROM THAT SHOWN IN THE PUBLIC RECORDS OF THE COUNTY IN WHICH THE CORNER IS LOCATED.
- C) THE CORNER MONUMENT HAS BEEN REPLACED OR MODIFIED.
- D) THE REFERENCE TIES REFERRED TO IN AN EXISTING PUBLIC RECORD ARE INCORRECT.

MONUMENT DESCRIPTION AND REMARKS:

S.E. CORNER SECTION 35-T85N-R2W SET 1/2" REBAR W/ L.S. CAP  
 # 11954 ON E 80TH AVE, E 5.8' SOUTH OF E OF 130TH STREET  
 2" DEEP

## RECOVERY TIE DRAWING

S.E. COR. SEC. 35-85-2



ON JAN 11-22-93 M.S.

I, DANIEL J. JOHNSON, CERTIFY THAT THE CORNER LOCATION(S) SHOWN ON THIS RECORD WERE DETERMINED BY ME OR UNDER MY DIRECTION AND CONTROL AND THAT THIS U.S. PUBLIC LAND SURVEY MONUMENT RECORD IS CORRECT AND COMPLETE TO THE BEST OF MY KNOWLEDGE AND BELIEF.



*Daniel J. Johnson*  
 DANIEL J. JOHNSON L.S. NO 11954 DATE 4-16-93

D N E C E L	A GOVERNMENT CORNER O 5/8" DIAM PIN SET --- CENTERLINE - - - - - EXISTING FENCE LINE - - - - - R.O.W. LINE	SHEET DATE U.S. PUBLIC LAND SURVEY RECORD	HALL AND HALL ENGINEERS, INC. 226 29TH STREET DRIVE S.E. CEDAR RAPIDS, IOWA 52403 319-362-9548									
	PROJECT DATE JAMES & MARLA PAULSEN											
D W N	RWB	C H K	DJJ	A P P	GDM	D A T E	2-1-93	SCALE NONE	P N O	OT 27	P N O	47.87