

FILED
RECORDERS OFFICE
JONES COUNTY IOWA

05 APR -6 PM 4:16

MARIE KRUTZFIELD
RECORDER 7.00 pd

J.D. TJEPKES, LS. 14807, 23428 RIDGE ROAD, ANAMOSA, IOWA, 52205 (319-462-6067)

UNITED STATES PUBLIC LAND SURVEY CORNER CERTIFICATE

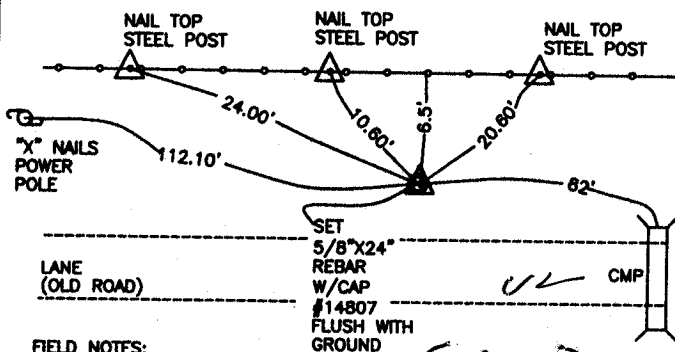
LAND SURVEY MONUMENTS SITUATED IN SECTION 34, TOWNSHIP 84
NORTH, RANGE 2 WEST OF THE 5TH P.M., JONES COUNTY, IOWA

CORNERS TO BE INDEXED

CORNER SECTION TOWNSHIP RANGE
SE COR 34 84N 2W
OFFICE FILE NO.



84234Y-040505.tib

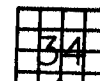


FIELD NOTES:
10-24-2004
BK 2004
P 153

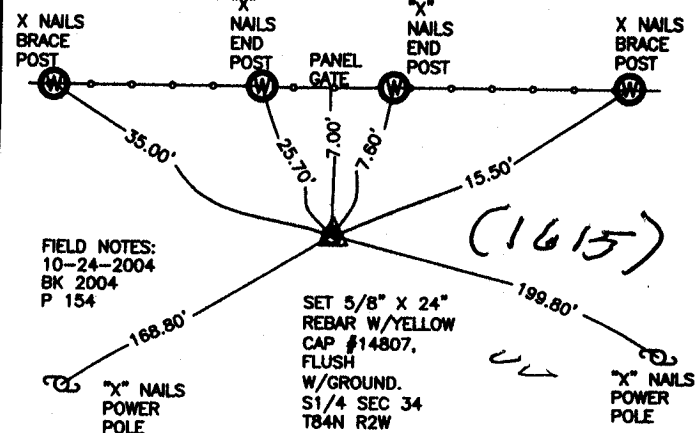
PREVIOUSLY RECORDED IN BOOK NA, PAGE NA
MONUMENT DESCRIPTION AND HOW ESTABLISHED
PER PROPORTIONATE DISTANCE AND ON LINE FROM FOUND REBAR AT NE CORNER SEC.4 T83N R2W, AND FOUND REBAR AT SE-SW-SW CORNER SEC. 35 T84N R2W, SET 5/8" X 24" REBAR WITH YELLOW CAP # 14807 FLUSH WITH GROUND. SE CORNER SECTION 34 T84N R2W. TIES AS INDICATED.

CORNERS TO BE INDEXED

CORNER SECTION TOWNSHIP RANGE
E1/4 COR 34 84N 2W
OFFICE FILE NO.



84234W-040505.tib



FIELD NOTES:
10-24-2004
BK 2004
P 154

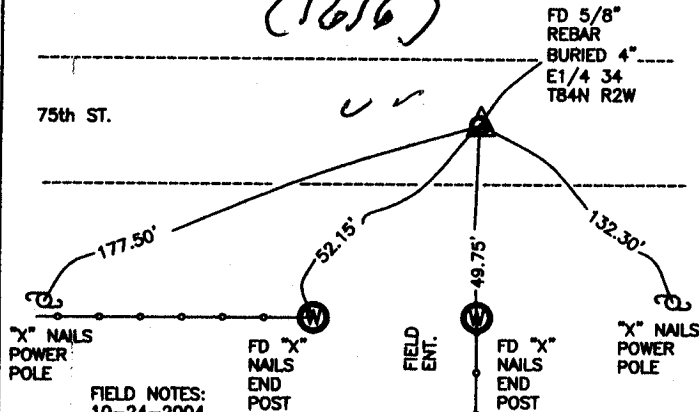
PREVIOUSLY RECORDED IN BOOK NA, PAGE NA
MONUMENT DESCRIPTION AND HOW ESTABLISHED
PER PROPORTIONATE DISTANCE AND ON LINE FROM FOUND REBAR AT NE CORNER SEC.4 T83N R2W, AND FOUND REBAR AT SE-SW-SW CORNER SEC. 35 T84N R2W, SET 5/8" X 24" REBAR WITH YELLOW CAP # 14807 FLUSH WITH GROUND. S1/4 CORNER SECTION 34 T84N R2W. TIES AS INDICATED.

CORNERS TO BE INDEXED

CORNER SECTION TOWNSHIP RANGE
E1/4 COR 34 84N 2W
OFFICE FILE NO.



842340-040505.tib
(1616)



FIELD NOTES:
10-24-2004
BK 2004
P 155

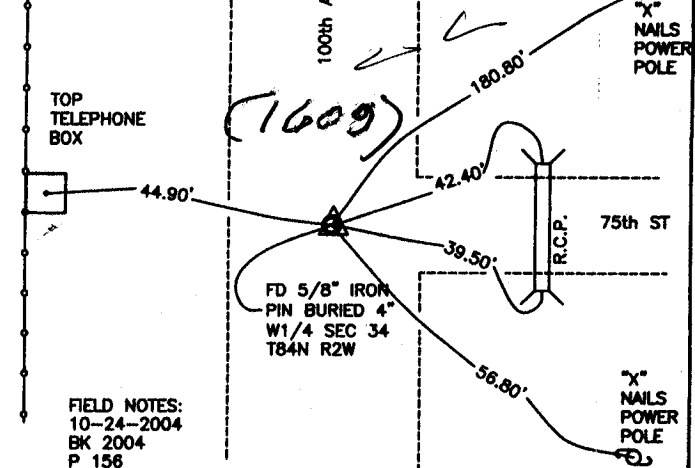
PREVIOUSLY RECORDED IN BOOK NA, PAGE NA
MONUMENT DESCRIPTION AND HOW ESTABLISHED
PER PHYSICAL EVIDENCE, FOUND 5/8" REBAR IN CENTER OF ROAD AND ON LINE WITH FENCE LINE SOUTH. E1/4 SECTION 34 T84N R2W. TIES AS INDICATED.

CORNERS TO BE INDEXED

CORNER SECTION TOWNSHIP RANGE
W1/4 COR 34 84N 2W
OFFICE FILE NO.



842330-040505.tib



FIELD NOTES:
10-24-2004
BK 2004
P 156

PREVIOUSLY RECORDED IN BOOK NA, PAGE NA
MONUMENT DESCRIPTION AND HOW ESTABLISHED
PER PHYSICAL EVIDENCE AT INTERSECTION OF 100th AVE AND 75th ST, FOUND 5/8" IRON PIN BURIED 4". W1/4 SECTION 34 T84N R2W. TIES AS INDICATED.

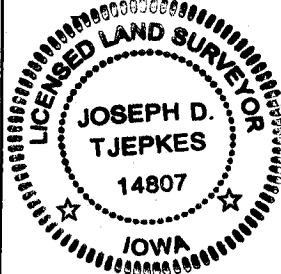
I hereby declare that this plat, survey or report was made by me or under my direct personal supervision and that I am a duly registered Land Surveyor under the laws of the State of Iowa.

Signed:

[Signature] 4.05.05

Joseph D. Tjepkes L.S. Iowa Reg. No. 14807
My Registration Renewal Date is December 31, 2006

SEAL



J.D. TJEPKES LS 14807
23428 RIDGE ROAD
ANAMOSA, IOWA, 52205
(319-462-3785)

THIS IS NOT A CERTIFICATION

JONES COUNTY ENGINEER'S OFFICE, 19501 HWY. 64, ANAMOSA, IOWA, 52205 (319)462-3785

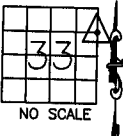
UNITED STATES PUBLIC LAND SURVEY CORNER CERTIFICATE

LAND SURVEY MONUMENTS SITUATED IN SECTION 33, TOWNSHIP 84
NORTH, RANGE 2 WEST OF THE 5TH P.M., JONES COUNTY, IOWA

CORNERS TO BE INDEXED

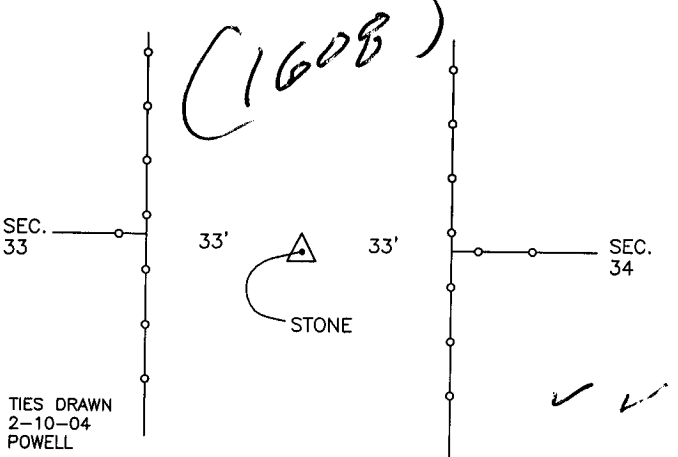
| | | | |
|--------------------------|---------------|-----------------|-------------|
| CORNER NE SE1/4 NE1/4 | SECTION 33 | TOWNSHIP 84N | RANGE 2W |
|--------------------------|---------------|-----------------|-------------|

OFFICE FILE NO. 84233j_021004.tif



NO SCALE

(1608)



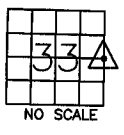
PREVIOUSLY RECORDED IN BOOK NA, PAGE NA
MONUMENT DESCRIPTION AND HOW ESTABLISHED _____

TIES ON RECORD IN JONES CO. ENGINEER'S OFFICE, REF: JONES CO.
CORNER STONE BOOK # 19 PAGE 45. DATED IN THE 1940'S.

CORNERS TO BE INDEXED

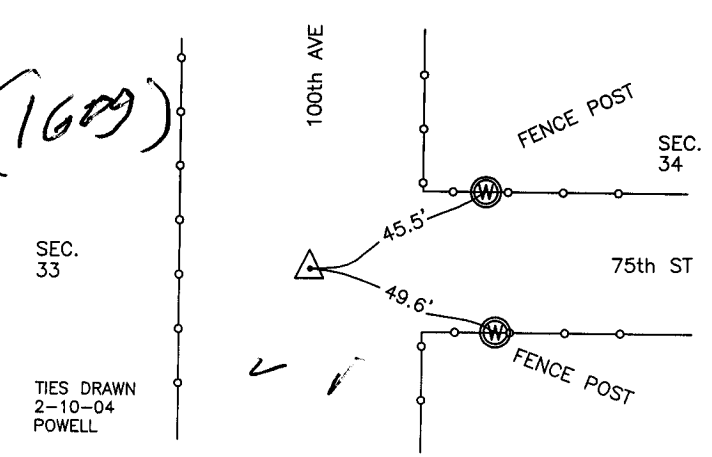
| | | | |
|----------------|---------------|-----------------|-------------|
| CORNER E1/4 | SECTION 33 | TOWNSHIP 84N | RANGE 2W |
|----------------|---------------|-----------------|-------------|

OFFICE FILE NO. 84233o_021004.tif



NO SCALE

(1609)



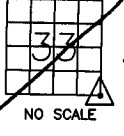
PREVIOUSLY RECORDED IN BOOK _____, PAGE _____
MONUMENT DESCRIPTION AND HOW ESTABLISHED _____

TIES ON RECORD IN JONES CO. ENGINEER'S OFFICE, REF: JONES CO.
CORNER STONE BOOK # 19 PAGE 45. DATED IN THE 1940'S.

CORNERS TO BE INDEXED

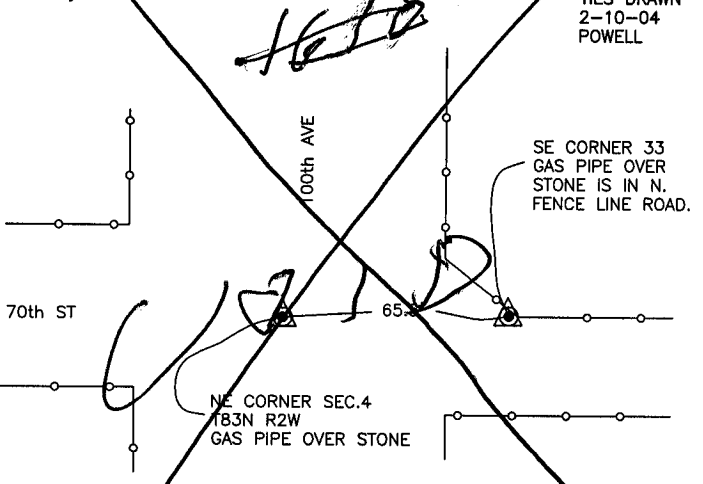
| | | | |
|--------------|---------------|-----------------|-------------|
| CORNER SE | SECTION 33 | TOWNSHIP 84N | RANGE 2W |
|--------------|---------------|-----------------|-------------|

OFFICE FILE NO. 84233y_021004.tif



NO SCALE

HETD



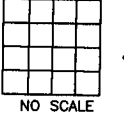
PREVIOUSLY RECORDED IN BOOK NA, PAGE NA
MONUMENT DESCRIPTION AND HOW ESTABLISHED _____

TIES ON RECORD IN JONES CO. ENGINEER'S OFFICE, REF: JONES CO.
CORNER STONE BOOK # 19 PAGE 45. DATED IN THE 1940'S.

CORNERS TO BE INDEXED

| | | | |
|--------|---------|----------|-------|
| CORNER | SECTION | TOWNSHIP | RANGE |
|--------|---------|----------|-------|

OFFICE FILE NO. _____



NO SCALE

PREVIOUSLY RECORDED IN BOOK _____, PAGE _____
MONUMENT DESCRIPTION AND HOW ESTABLISHED _____

~~I hereby declare that this plat, survey or report was made by me or under my direct personal supervision and that I am a duly registered Land Surveyor under the laws of the State of Iowa.~~

Signed: _____

SEAL

JONES COUNTY
ENGINEER'S OFFICE

19501 HWY. 64,
ANAMOSA, IOWA,
52205 (319)462-3785