

2006 2776

FILED
RECORDERS OFFICE
JONES COUNTY IOWA

06 JUL 21 AM 11:21

MARIE KRUTZFIELD
RECORDER

J.D. TJEPKES, LS. JONES COUNTY ENGINEER'S OFFICE, 19501 HWY. 64, ANAMOSA, IOWA, 52205 (319)462-3785

UNITED STATES PUBLIC LAND SURVEY CORNER CERTIFICATE

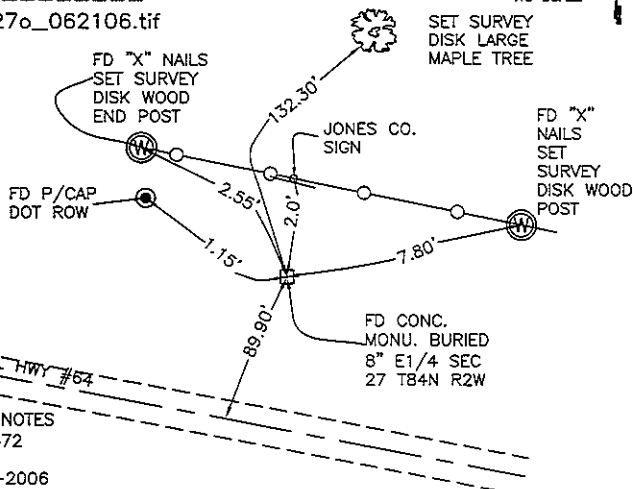
LAND SURVEY MONUMENTS SITUATED IN SECTION 27, TOWNSHIP 84
NORTH, RANGE 2 WEST OF THE 5TH P.M., JONES COUNTY, IOWA

CORNERS TO BE INDEXED

CORNER SECTION TOWNSHIP RANGE
E1/4 27 84N 2W



OFFICE FILE NO.
84227o_062106.tif



FIELD NOTES
BK #372
P 80
6-05-2006

PREVIOUSLY RECORDED IN BOOK NA, PAGE NA
MONUMENT DESCRIPTION AND HOW ESTABLISHED _____

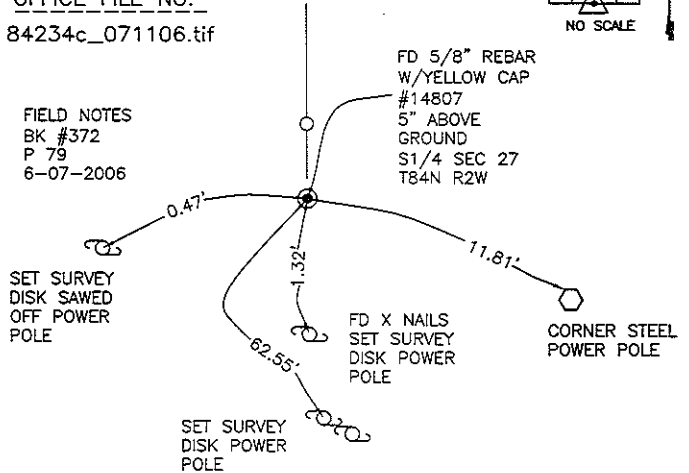
PER NOTES FROM IDOT PROJECT FN-64-1(3)--21-53, DATED 1-19-1979,
AND TIES ON RECORD AT JONES COUNTY ENGINEER'S OFFICE, FOUND
CONCRETE MONUMENT BURIED 8". RETIED AS INDICATED E1/4 SECTION 27
T84N R2W.

CORNERS TO BE INDEXED

CORNER SECTION TOWNSHIP RANGE
S1/4 27 84N 2W



OFFICE FILE NO.
84234c_071106.tif



FIELD NOTES
BK #372
P 79
6-07-2006

PREVIOUSLY RECORDED IN BOOK NA, PAGE NA
MONUMENT DESCRIPTION AND HOW ESTABLISHED _____

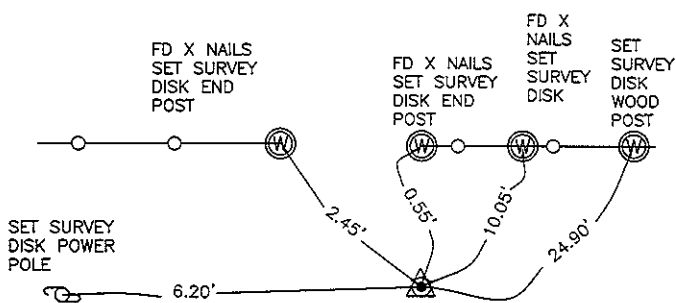
PER TIES FOUND 5/8"x24" REBAR W/YELLOW CAP #14807,
5" ABOVE PRESENT GROUND. RETIED AS INDICATED.
S1/4 CORNER SECTION 27 T84N R2W.

CORNERS TO BE INDEXED

CORNER SECTION TOWNSHIP RANGE
SE COR 27 84N 2W



OFFICE FILE NO.
84234e_071106.tif



FIELD NOTES
BK #372
P 79
6-07-2006

FD LIMESTONE
BURIED 8"
SE CORNER SEC
27 T84N R2W

PREVIOUSLY RECORDED IN BOOK NA, PAGE NA
MONUMENT DESCRIPTION AND HOW ESTABLISHED _____

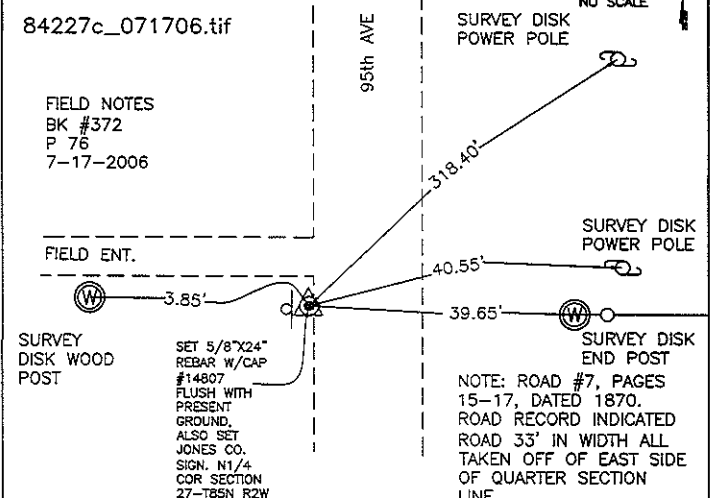
PER TIES ON RECORD AT JONES COUNTY ENGINEER'S OFFICE
FOUND LIMESTONE BURIED 8". RETIED AS INDICATED. SE CORNER
SECTION 27 T84N R2W.

CORNERS TO BE INDEXED

CORNER SECTION TOWNSHIP RANGE
N1/4 COR 27 84N 2W



OFFICE FILE NO.
84227c_071706.tif



FIELD NOTES
BK #372
P 76
7-17-2006

NOTE: ROAD #7, PAGES
15-17, DATED 1870.
ROAD RECORD INDICATED
ROAD 33' IN WIDTH ALL
TAKEN OFF OF EAST SIDE
OF QUARTER SECTION
LINE.

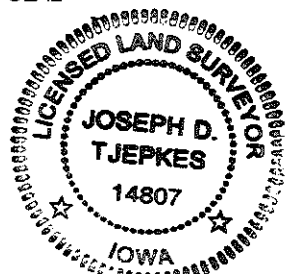
PREVIOUSLY RECORDED IN BOOK NA, PAGE NA
MONUMENT DESCRIPTION AND HOW ESTABLISHED _____
PER PHYSICAL EVIDENCE AND PLAT OF SURVEY ON FILE AT JONES COUNTY
RECORDER'S OFFICE BOOK "H" PAGE 77 & 81 FILED BY LS #6581
(DILLON), NO TIES ON FILE. SET 5/8"x24" REBAR W/CAP #14807 AND
SMALL JONES COUNTY SIGN. TIES AS INDICATED FOR N1/4 CORNER
SECTION 27 T85N R2W.

I hereby declare that this plat, survey or report was made by me or under my direct personal supervision and that I am a duly registered Land Surveyor under the laws of the State of Iowa.

Signed:

Joseph D. Tjepkes L.S. Iowa Reg. No. 14807
My Registration Renewal Date is December 31, 2006

SEAL



J.D. TJEPKES LS 14807
JONES COUNTY
ENGINEER'S OFFICE

19501 HWY. 64,
ANAMOSA, IOWA,
52205 (319)462-3785

THIS IS NOT A CERTIFICATION

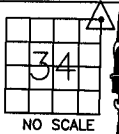
JONES COUNTY ENGINEER'S OFFICE, 19501 HWY. 64, ANAMOSA, IOWA, 52205 (319)462-3785

UNITED STATES PUBLIC LAND SURVEY CORNER CERTIFICATE

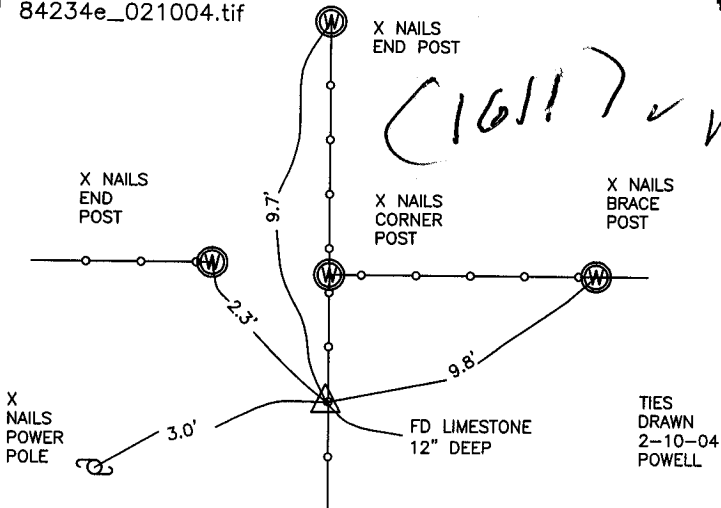
LAND SURVEY MONUMENTS SITUATED IN SECTION 34, TOWNSHIP 84
NORTH, RANGE 2 WEST OF THE 5TH P.M., JONES COUNTY, IOWA

CORNERS TO BE INDEXED

CORNER SECTION TOWNSHIP RANGE
NE 34 84N 2W



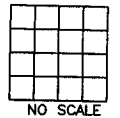
OFFICE FILE NO.
84234e_021004.tif



PREVIOUSLY RECORDED IN BOOK NA, PAGE NA
MONUMENT DESCRIPTION AND HOW ESTABLISHED _____
TIES ON RECORD IN JONES CO. ENGINEER'S OFFICE. REF:
FOUND 4"X4"X6" LIMESTONE BURIED 12".

CORNERS TO BE INDEXED

CORNER SECTION TOWNSHIP RANGE

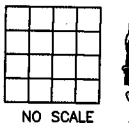


OFFICE FILE NO.

PREVIOUSLY RECORDED IN BOOK _____, PAGE _____
MONUMENT DESCRIPTION AND HOW ESTABLISHED _____

CORNERS TO BE INDEXED

CORNER SECTION TOWNSHIP RANGE

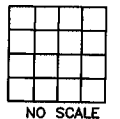


OFFICE FILE NO.

PREVIOUSLY RECORDED IN BOOK _____, PAGE _____
MONUMENT DESCRIPTION AND HOW ESTABLISHED _____

CORNERS TO BE INDEXED

CORNER SECTION TOWNSHIP RANGE



OFFICE FILE NO.

PREVIOUSLY RECORDED IN BOOK _____, PAGE _____
MONUMENT DESCRIPTION AND HOW ESTABLISHED _____

~~I hereby declare that this plat, survey or report was made by me or under my direct personal supervision and that I am a duly registered Land Surveyor under the laws of the State of Iowa.~~

Signed: _____

SEAL

JONES COUNTY
ENGINEER'S OFFICE

19501 HWY. 64,
ANAMOSA, IOWA,
52205 (319)462-3785

A3