

2003 3214

FILED  
RECORDERS OFFICE  
JONES COUNTY IOWA

03 JUL 11 AM 9:05

MARIE KRUTZFIELD  
RECORDER *No Fee*

J.D. TJEPKES, LS. JONES COUNTY ENGINEER'S OFFICE, 19501 HWY. 64, ANAMOSA, IOWA, 52205 (319)462-3785

# UNITED STATES PUBLIC LAND SURVEY CORNER CERTIFICATE

LAND SURVEY MONUMENTS SITUATED IN SECTION 34, TOWNSHIP 85  
NORTH, RANGE 2 WEST OF THE 5TH P.M., JONES COUNTY, IOWA

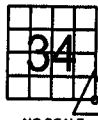
### CORNERS TO BE INDEXED

CORNER SECTION TOWNSHIP RANGE

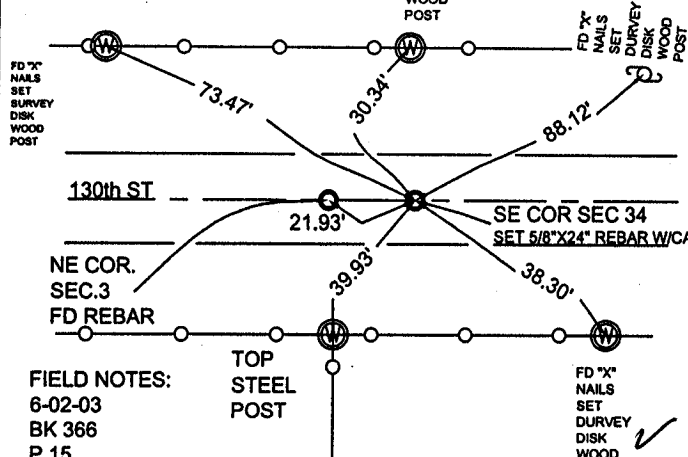
SE 34 85N 2W

OFFICE FILE NO.

85234y\_061903.jpg



NO SCALE



#### FIELD NOTES:

6-02-03

BK 366

P 15

PREVIOUSLY RECORDED IN BOOK NA, PAGE NA

MONUMENT DESCRIPTION AND HOW ESTABLISHED

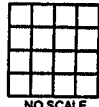
PER PROPORTION BETWEEN FD IRON PIN @S1/4 SEC 34 & FD  
IRON PIN @SE COR SEC 35,  
SET 5/8\"X24\" REBAR W/ORANGE CAP #14807 ON LINE, BURIED 4\"  
IN ROAD BED. TIES AS INDICATED FOR SE COR. SECTION 34 T85N  
R2W.

*1370*

### CORNERS TO BE INDEXED

CORNER SECTION TOWNSHIP RANGE

OFFICE FILE NO.



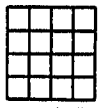
NO SCALE

PREVIOUSLY RECORDED IN BOOK \_\_\_\_\_, PAGE \_\_\_\_\_  
MONUMENT DESCRIPTION AND HOW ESTABLISHED \_\_\_\_\_

### CORNERS TO BE INDEXED

CORNER SECTION TOWNSHIP RANGE

OFFICE FILE NO.



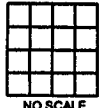
NO SCALE

PREVIOUSLY RECORDED IN BOOK \_\_\_\_\_, PAGE \_\_\_\_\_  
MONUMENT DESCRIPTION AND HOW ESTABLISHED \_\_\_\_\_

### CORNERS TO BE INDEXED

CORNER SECTION TOWNSHIP RANGE

OFFICE FILE NO.



NO SCALE

PREVIOUSLY RECORDED IN BOOK \_\_\_\_\_, PAGE \_\_\_\_\_  
MONUMENT DESCRIPTION AND HOW ESTABLISHED \_\_\_\_\_

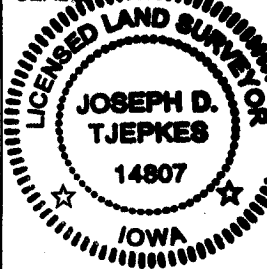
I hereby declare that this plat, survey or report was made by me or under my direct personal supervision and that I am a duly registered Land Surveyor under the laws of the State of Iowa.

Signed:

*[Signature]* 7-10-03

Joseph D. Tjepkes L.S. Iowa Reg. No. 14807  
My Registration Renewal Date is December 31, 2004

SEAL



J.D. TJEPKES LS 14807  
JONES COUNTY  
ENGINEER'S OFFICE

19501 HWY. 64,  
ANAMOSA, IOWA,  
52205 (319)462-3785

*d*

2001 2750

FILED  
RECORDERS OFFICE  
JONES COUNTY IOWA

01 AUG -6 AM 8:48

MARIE KRUTZFIELD *600 Pd*  
RECORDER

J.D. TJEPKES, 23428 RIDGE RD. ANAMOSA, IOWA, 52205 (319)462-6067

# UNITED STATES PUBLIC LAND SURVEY CORNER CERTIFICATE

LAND SURVEY MONUMENTS SITUATED IN SECTION 2, TOWNSHIP 84  
NORTH, RANGE 2 WEST OF THE 5TH P.M., JONES COUNTY, IOWA

**953 CORNERS TO BE INDEXED**

CORNER	SECTION	TOWNSHIP	RANGE
NE	2	84N	2W

PREVIOUSLY RECORDED IN BOOK N/A, PAGE N/A  
MONUMENT DESCRIPTION AND HOW ESTABLISHED SET 5/8"x24"  
REBAR WITH YELLOW CAP LS 14807 AT A PROPORTIONATE DISTANCE  
FROM THE NW. COR. SEC. 2, T84N, R2W TO THE SE. COR. SEC. 35,  
T85N, R2W TO ESTABLISH THE NE. COR. SEC. 2, T84N, R2W OF THE  
5TH P.M., JONES COUNTY, IOWA. SET TIE POINTS AS INDICATED.

**954 CORNERS TO BE INDEXED**

CORNER	SECTION	TOWNSHIP	RANGE
N-1/4	2	84N	2W

PREVIOUSLY RECORDED IN BOOK N/A, PAGE N/A  
MONUMENT DESCRIPTION AND HOW ESTABLISHED SET 5/8"x24"  
REBAR WITH YELLOW CAP LS 14807 AT A PROPORTIONATE  
DISTANCE FROM THE NW. COR. SEC. 2 TO THE NE. COR. SEC.  
2 TO ESTABLISH THE NORTH QUARTER COR. SEC. 2, T84N, R2W,  
OF THE 5TH P.M., JONES COUNTY, IOWA. SET REFERENCE POINTS  
AND TIED OUT AS INDICATED.

**955 CORNERS TO BE INDEXED**

CORNER	SECTION	TOWNSHIP	RANGE
NORTHWEST	2	84N	2W

NOTE:  
ALL TIES AS INDICATED  
ARE SLOPE MEASURED.

PREVIOUSLY RECORDED IN BOOK ", PAGE 59  
MONUMENT DESCRIPTION AND HOW ESTABLISHED FOUND 5/8"x  
30" REBAR 0.3' BELOW ROAD SURFACE PER ORRIS'S FIRST  
ADDITION TO JONES COUNTY. NORTHWEST CORNER SECTION 2, T84N,  
R2W, 5TH PRINCIPAL MERIDIAN, JONES COUNTY, IOWA. SET  
REFERENCE POINTS AND TIED OUT AS INDICATED.

**956 CORNERS TO BE INDEXED**

CORNER	SECTION	TOWNSHIP	RANGE
SOUTHWEST	2	84N	2W

PREVIOUSLY RECORDED IN BOOK N/A, PAGE N/A  
MONUMENT DESCRIPTION AND HOW ESTABLISHED SET 5/8"x24"  
REBAR WITH YELLOW CAP LS 14807 IN CL PAVEMENT PER COUNTY  
ENGINEER'S E-23 ROAD PLANS AT STATION 1058+68. SET REFERENCE  
POINTS AND TIED OUT AS INDICATED. SW. COR. SECTION 2, T84N,  
R2W, 5TH PRINCIPAL MERIDIAN, JONES COUNTY, IOWA

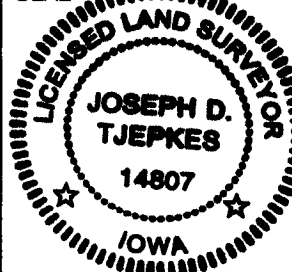
I hereby declare that this plat, survey or report was made by me or under my direct personal supervision and that I am a duly registered Land Surveyor under the laws of the State of Iowa.

Signed:

*Joseph D. Tjepkes* 7-30-02

Joseph D. Tjepkes L.S. Iowa Reg. No. 14807  
My Registration Renewal Date is December 31, 2002

SEAL



J.D. TJEPKES LS 14807  
23428 RIDGE ROAD  
ANAMOSA, IOWA 52205