

2003 3740

FILED  
RECORDERS OFFICE  
JONES COUNTY IOWA

03 AUG -6 AM 8:58

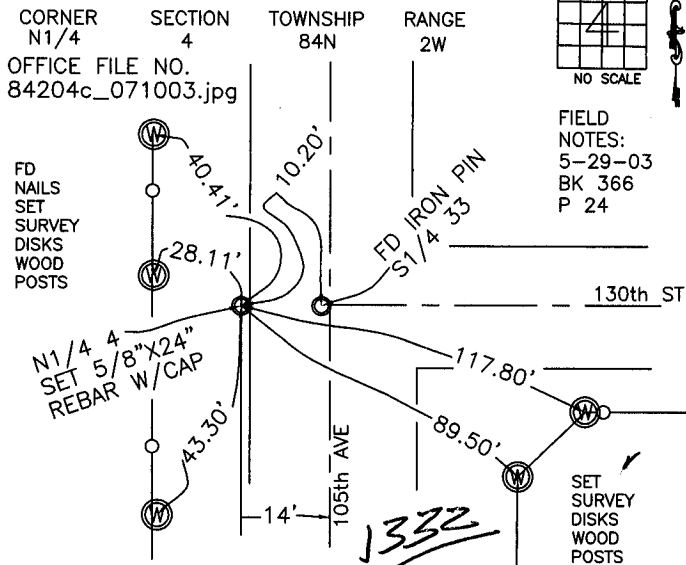
MARIE KRUTZFIELD  
RECORDER *No Fee*

J.D. Tjepkes, LS. JONES COUNTY ENGINEER'S OFFICE, 19501 HWY. 64, ANAMOSA, IOWA, 52205 (319)462-3785

# UNITED STATES PUBLIC LAND SURVEY CORNER CERTIFICATE

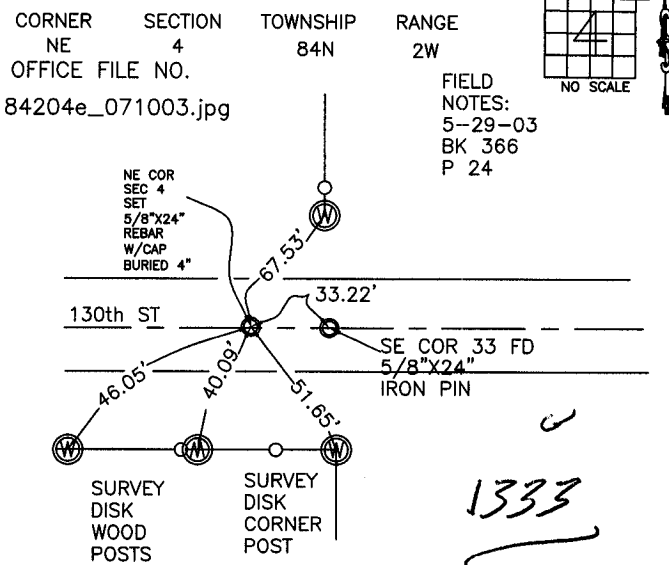
LAND SURVEY MONUMENTS SITUATED IN SECTION 4, TOWNSHIP 84  
NORTH, RANGE 2 WEST OF THE 5TH P.M., JONES COUNTY, IOWA

### CORNERS TO BE INDEXED



PREVIOUSLY RECORDED IN BOOK NA, PAGE NA  
MONUMENT DESCRIPTION AND HOW ESTABLISHED \_\_\_\_\_  
PER PROPORTIONATE DISTANCE BETWEEN NE COR SEC 4 & NW  
COR SEC 4, SET 5/8"X24" REBAR W/ORANGE CAP #14807, IN  
WEST FORSLOPE OF ROAD FLUSH WITH GROUND. TIES AS  
INDICATED.

### CORNERS TO BE INDEXED



PREVIOUSLY RECORDED IN BOOK NA, PAGE BC  
MONUMENT DESCRIPTION AND HOW ESTABLISHED \_\_\_\_\_  
PER PROPORTIONATE DISTANCES ALONG TOWNSHIP LINE, SET  
5/8"X24" REBAR W/ORANGE CAP #14807, IN ROADBED BURIED  
4". TIES AS INDICATED

### CORNERS TO BE INDEXED

CORNER	SECTION	TOWNSHIP	RANGE

OFFICE FILE NO. \_\_\_\_\_

PREVIOUSLY RECORDED IN BOOK NA, PAGE NA  
MONUMENT DESCRIPTION AND HOW ESTABLISHED \_\_\_\_\_

### CORNERS TO BE INDEXED

CORNER	SECTION	TOWNSHIP	RANGE

OFFICE FILE NO. \_\_\_\_\_

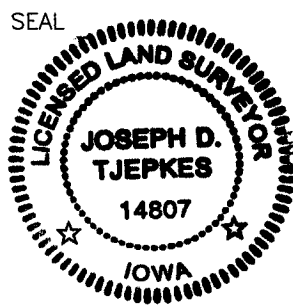
PREVIOUSLY RECORDED IN BOOK \_\_\_\_\_, PAGE \_\_\_\_\_  
MONUMENT DESCRIPTION AND HOW ESTABLISHED \_\_\_\_\_

I hereby declare that this plat, survey or report was made by me or under my direct personal supervision and that I am a duly registered Land Surveyor under the laws of the State of Iowa.

Signed:

*Joseph D. Tjepkes* 8-03-03  
Joseph D. Tjepkes L.S. Iowa Reg. No. 14807  
My Registration Renewal Date is December 31, 2004

SEAL



J.D. Tjepkes LS 14807  
JONES COUNTY  
ENGINEER'S OFFICE

19501 HWY. 64,  
ANAMOSA, IOWA,  
52205 (319)462-3785

*b*

2003 3209

FILED  
RECORDERS OFFICE  
JONES COUNTY IOWA

03 JUL 11 AM 8:59

MARIE KRUTZFIELD  
RECORDER NO FEE

J.D. TJEPKES, LS. JONES COUNTY ENGINEER'S OFFICE, 19501 HWY. 64, ANAMOSA, IOWA, 52205 (319)462-3785

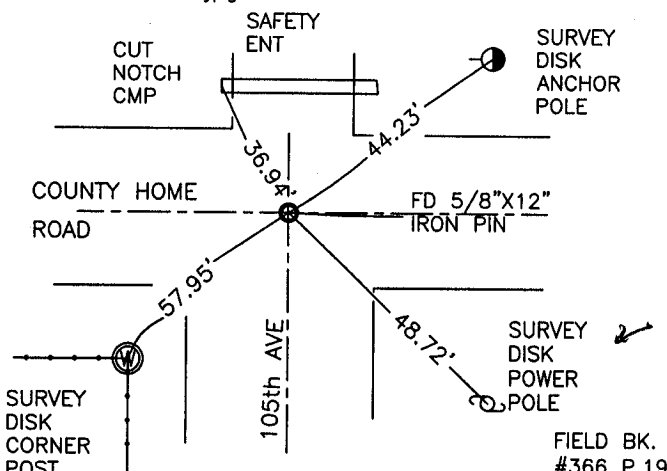
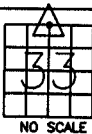
# UNITED STATES PUBLIC LAND SURVEY CORNER CERTIFICATE

LAND SURVEY MONUMENTS SITUATED IN SECTION 33, TOWNSHIP 85  
NORTH, RANGE 2 WEST OF THE 5TH P.M., JONES COUNTY, IOWA

### CORNERS TO BE INDEXED

CORNER SECTION TOWNSHIP RANGE  
N1/4 33 85N 2W

OFFICE FILE NO.  
85233c\_060303.jpg



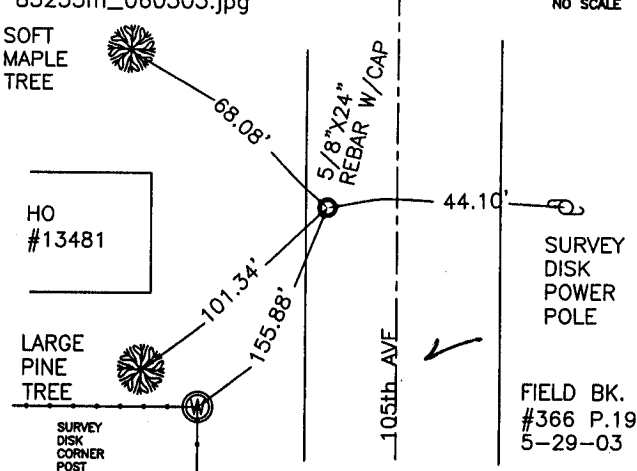
PREVIOUSLY RECORDED IN BOOK NA, PAGE NA  
MONUMENT DESCRIPTION AND HOW ESTABLISHED  
FD 5/8"X12" IRON PIN @ INTERSECTION OF 105th AVE. &  
COUNTY HOME ROAD. REPLACED WITH 5/8"X24" REBAR AND  
TIED AS INDICATED.

1372

### CORNERS TO BE INDEXED

CORNER SECTION TOWNSHIP RANGE  
CENTER 33 85N 2W

OFFICE FILE NO.  
85233m\_060303.jpg



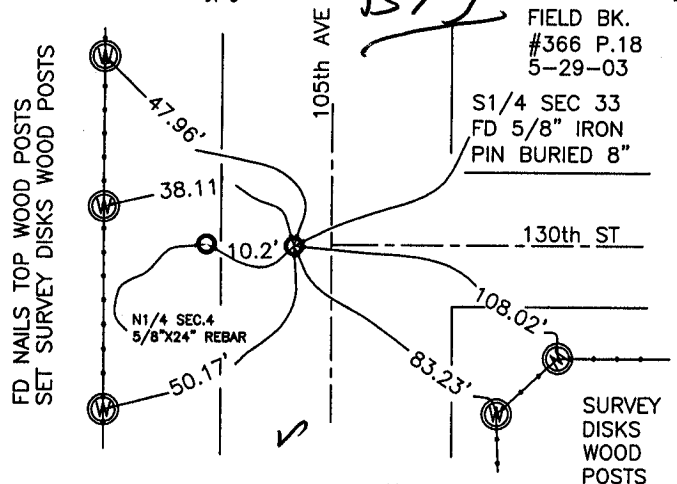
PREVIOUSLY RECORDED IN BOOK NA, PAGE NA  
MONUMENT DESCRIPTION AND HOW ESTABLISHED  
PER BREAKDOWN OF SECTION 33, SET 5/8"X24" REBAR  
W/CAP #14807 IN WEST SHOULDER LINE OF 105th AVE.  
TIED AS INDICATED.

1373

### CORNERS TO BE INDEXED

CORNER SECTION TOWNSHIP RANGE  
S1/4 33 85N 2W

OFFICE FILE NO.  
85233w\_060303.jpg



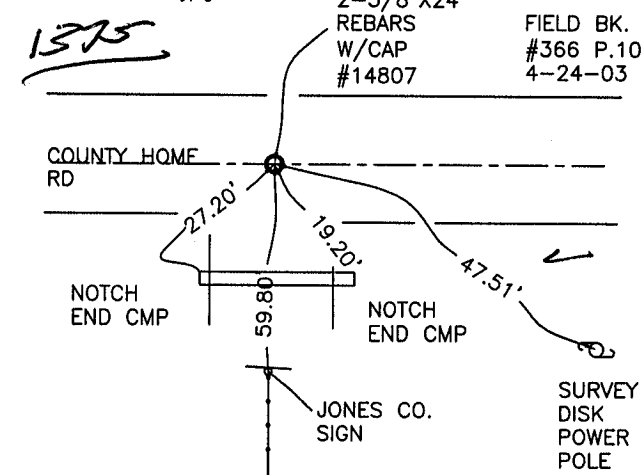
PREVIOUSLY RECORDED IN BOOK NA, PAGE NA  
MONUMENT DESCRIPTION AND HOW ESTABLISHED  
FD. 5/8" IRON PIN PER TIES @ JONES CO. ENGINEER'S  
OFFICE "1984" BK.297 P.5, FD STONE. SET NEW TIES AS  
INDICATED.

1374

### CORNERS TO BE INDEXED

CORNER SECTION TOWNSHIP RANGE  
NE 33 85N 2W

OFFICE FILE NO.  
85233e060303.jpg



PREVIOUSLY RECORDED IN BOOK NA, PAGE NA  
MONUMENT DESCRIPTION AND HOW ESTABLISHED  
FD. 12"X7"X18" LIMESTONE 4" BELOW PRESENT ROAD TOP  
STANDING UP. LOWERED STONE 53" AND STACKED  
2-5/8"X24" REBARS ON TOP. TOP REBAR W/CAP #14807  
BURIED 4" BELOW TOP OF ROAD, AND ON LINE WITH FENCE  
SOUTH. TIED AS INDICATED.

1375

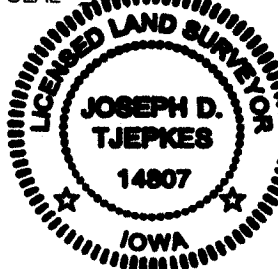
I hereby declare that this plat, survey or report was made by me or under my direct personal supervision and that I am a duly registered Land Surveyor under the laws of the State of Iowa.

Signed:

*Joseph D. Tjepkes* 7-10-03

Joseph D. Tjepkes L.S. Iowa Reg. No. 14807  
My Registration Renewal Date is December 31, 2004

SEAL



J.D. TJEPKES LS 14807  
JONES COUNTY  
ENGINEER'S OFFICE

19501 HWY. 64,  
ANAMOSA, IOWA,  
52205 (319)462-3785