

2006 3016

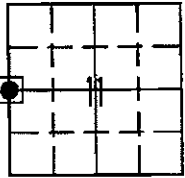
FILED
RECORDERS OFFICE
IOWA COUNTY IOWA

06 AUG -9 AM 9:42

MARKIE KRUTZFIELD
RECORDER 7.00 Pd

Prepared by: Richard M. Kordick, P.E., L.S., 120 East Main, Suite D, Anamosa, IA 52205 Phone: (319) 462-4498

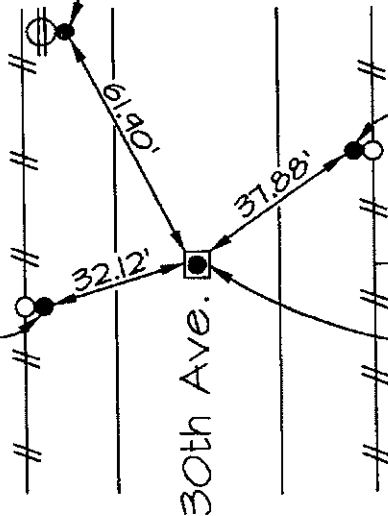
U.S. PUBLIC LAND SURVEY CORNER CERTIFICATE



11-83N-1W
Jones County
OXFORD Township

Set 1/2" rebar, 4" high on
E. side of power pole

Set 1/2" rebar, 4" high on
E. side of fence post



Set 1/2" rebar, 4" high on
W. side of fence post

N 1/4 Corner
Section 11-83-1
Set 1/2" rebar w/ red
cap "Kordick 1365T", 4" deep

Plan-View No Scale

Section corner location: W 1/4 Corner, Section 11-83-1

Reason for corner tie:

- A) There is no certificate for the corner on file with the recorder.
- B) Corner position differs from previously recorded certificate recorded in book , page
- C) Corner monument was replaced or modified.
- D) Reference ties in previously recorded certificate recorded in book , page are incorrect or missing.

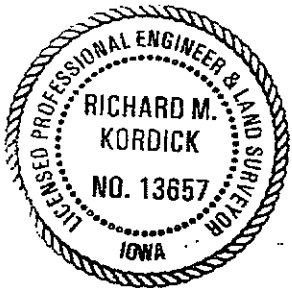
Research at the recorder's office, auditor's office, and engineer's office revealed the following:
No information for this corner was found.

Field search performed was as follows:

Field search was performed with a metal detector, excavation, and probing. Nothing was found.

Monument found or set:

A 1/2" rebar with red cap "Kordick 1365T" was set, 4" deep, on the centerline of 30th Avenue and in-line with the fence to the east which perpetuated the corner location.



I hereby certify that this land surveying document was prepared and the related survey work was performed by me or under my direct personal supervision and that I am a duly licensed Land Surveyor under the laws of the State of Iowa.

Richard M. Kordick 8/7/2006
Richard M. Kordick date
License number 13657
My license renewal date is December 31, 2007.
Pages or sheets covered by this seal: 1 of 1

LEGEND:

- Section Corner as noted
- Power Pole
- Section line
- Centerline
- Existing Fence
- Recorded Dist.

Kordick Surveying & Engineering
120 East Main, Suite D
Anamosa, Iowa 52205
(319) 462-4498

U.S. Public Land Survey Corner Certificate

Project: Plat of Survey
Parcel No. 2006-117
Proprietor: Lynn F. Sterk and Karen Sterk

Field BK
06032
Date
8-7-06
Job No.
06032
Sheet
1 of 1