

Marie Krutzfield, Recorder  
 Jones County, Iowa

Prepared by *Wm. Burger LandSurveyors* 510 3rd Street West Court, Worthington, Iowa Phone 563 - 855 2028

**UNITED STATES PUBLIC LAND SURVEY CORNER CERTIFICATE**

Land Survey Monuments situated in Section 10, Township 83N, Range 1W, of the Fifth Principal Meridian, Jones County, Iowa. Previously recorded in N/A in the Office of the County Recorder

Monument Description and Remarks: (No Corner Certificates found at the County Recorders Office)

NW CORNER NE1/4 NW1/4 - SET 1/2" IRON ROD W/ YELLOW LS CAP #12642 - SET ON LINE AND MIDWAY BETWEEN THE NW CORNER AND THE N1/4 CORNER

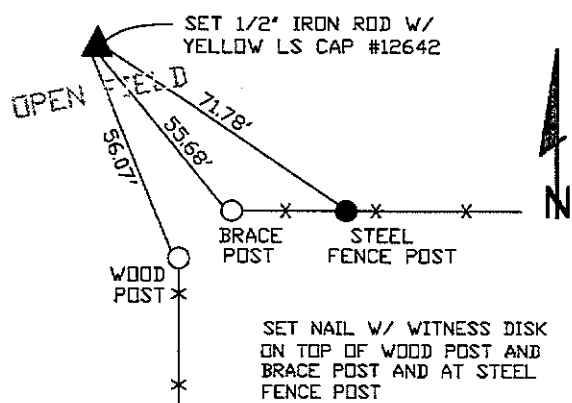
N1/4 CORNER - SET 1/2" IRON ROD W/ YELLOW LS CAP #12642 - SET ON LINE AND MIDWAY BETWEEN THE NW CORNER AND THE NE CORNER

SW CORNER NE1/4 NW1/4 - SET 1/2" IRON ROD W/ YELLOW LS CAP #12642 - RUN STRAIGHT LINES FROM OPPOSITE 1/4 1/4 CORNERS AND SET AT THE POINT OF INTERSECTION

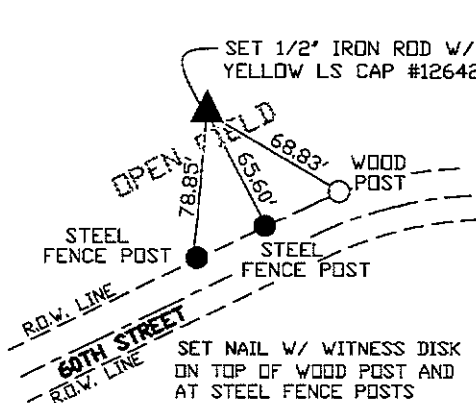
SE CORNER NE1/4 NW1/4 - SET 1/2" IRON ROD W/ YELLOW LS CAP #12642 - SET ON LINE AND MIDWAY BETWEEN THE CENTER OF SECTION AND THE N1/4 CORNER

**PLAN VIEW**

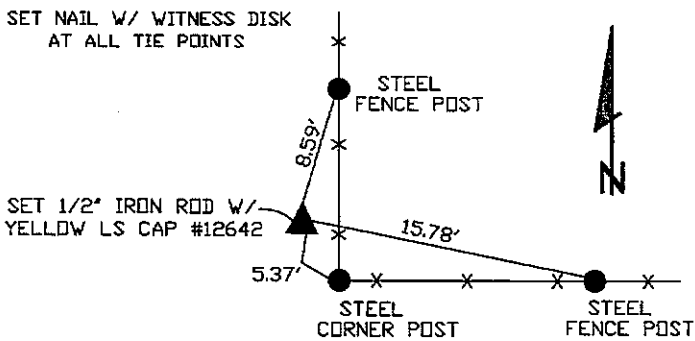
**NW CORNER NE1/4 NW1/4**



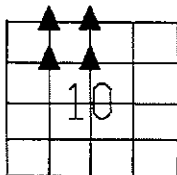
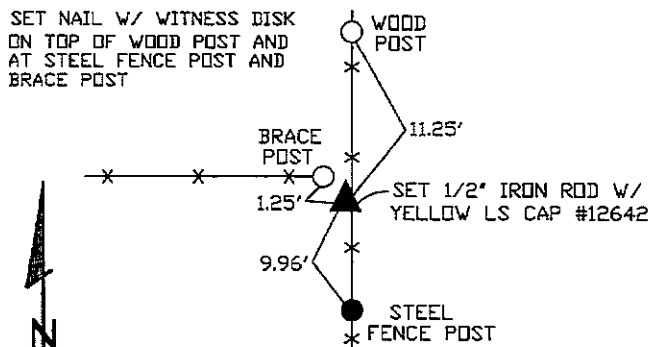
**N1/4 CORNER**



**SW CORNER NE1/4 NW1/4**



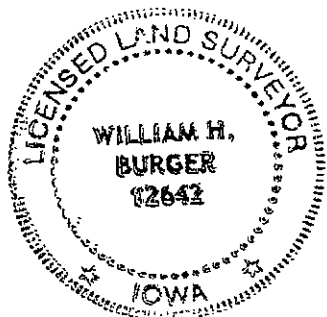
**SE CORNER NE1/4 NW1/4**



SEC. 10 TWP. 83N RANGE 1W

**CORNERS TO BE INDEXED**

NW CORNER NE1/4 NW1/4	10	83N	1W
N1/4 CORNER	10	83N	1W
SW CORNER NE1/4 NW1/4	10	83N	1W
SE CORNER NE1/4 NW1/4	10	83N	1W



I hereby certify that this land surveying document was prepared and related survey work was performed by me or under my direct personal supervision and that I am a duly licensed Land Surveyor under the laws of the State of Iowa.

*William H. Burger* 3/24/09  
 William H. Burger Date

License number 12642  
 My license renewal date is December 31, 2008  
 Pages or Sheets covered by this seal: Sheet 1 of 1