

UNITED STATES PUBLIC LAND SURVEY CORNER CERTIFICATE

OF

Land Survey Monuments situated in Section 13, Township 83 North, Range 1 West, of the Fifth Principal Meridian, Jones County, Iowa.
 Previously recorded in _____ in County Recorder's Office.

(book, page, document number, etc.)

(Show reason for preparing this certificate, the evidence and detailed procedures used in establishing the corner positions and monumentation found or placed.)

Monument Description and Remarks: Set #4 rebar @ the northeast corner
Set #4 rebar @ north 1/4 corner. Set #4 rebar @ northeast corner Northwest Quarter
Northeast Quarter. Set #4 rebar @ southeast corner Northwest Quarter,
Northeast Quarter. Set #4 rebar @ southwest corner Northwest Quarter,
Northeast Quarter.

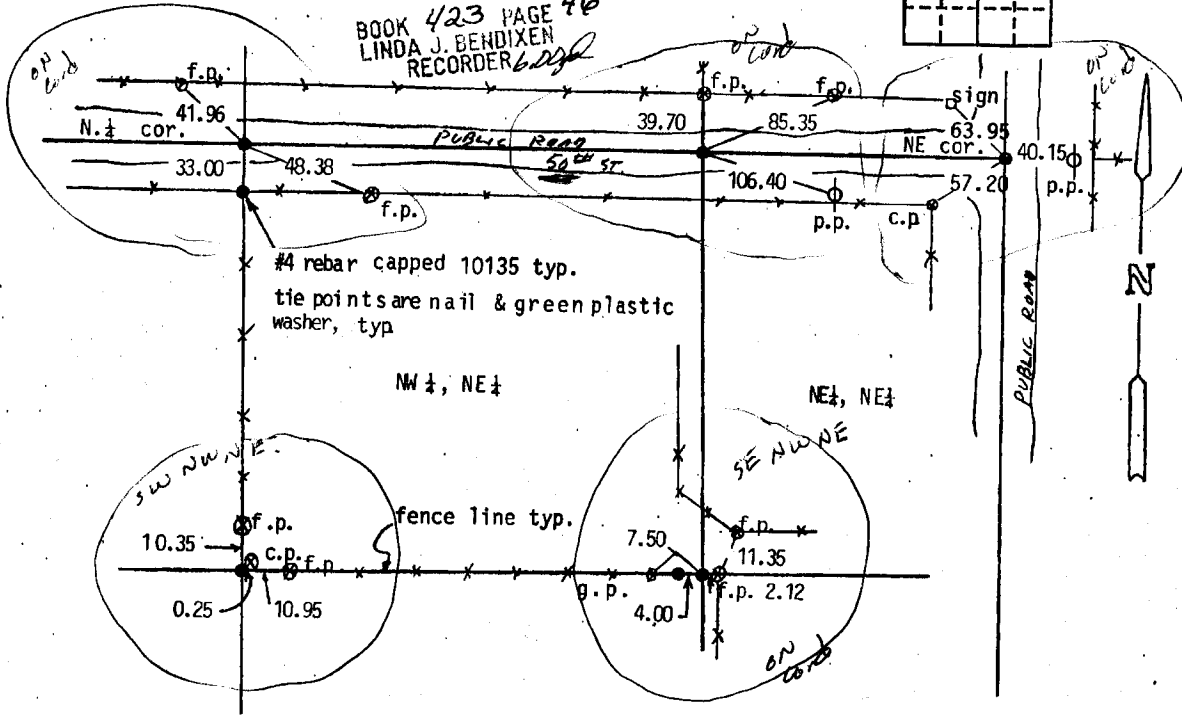
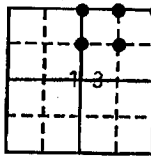
3268 PLAN - VIEW

(Show a minimum of three reference ties to durable physical objects, relevant monuments and physical conditions that will enable recovery of the corner.)

FILED
 RECORDERS OFFICE
 JONES COUNTY IOWA

97 APR 22 AM 10:28

BOOK 423 PAGE 46
 LINDA J. BENDIXEN
 RECORDER



I hereby certify that the survey work was completed and this land surveying document was prepared by me or under my direct personal supervision and that I am a duly registered land surveyor under the laws of the state of Iowa

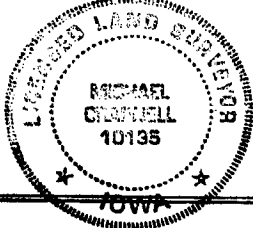
Signature: _____

Name typed or printed: Michael D. Crapnell

Date: April 21, 1997 Reg. No. 10135

My registration renewal date is December 31, 1998

SEAL



Corners	List Corners to be Indexed		
	Section	Twp	Range
NE	13	83	1W
N 1/4	13	83	1W
NE NW 1/4, NE 1/4	13	83	1W
SE NW 1/4, NE 1/4	13	83	1W
SW NW 1/4, NE 1/4	13	83	1W