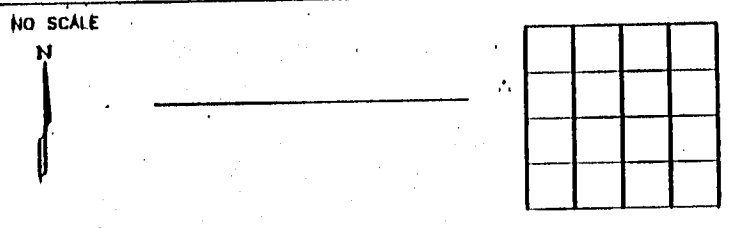
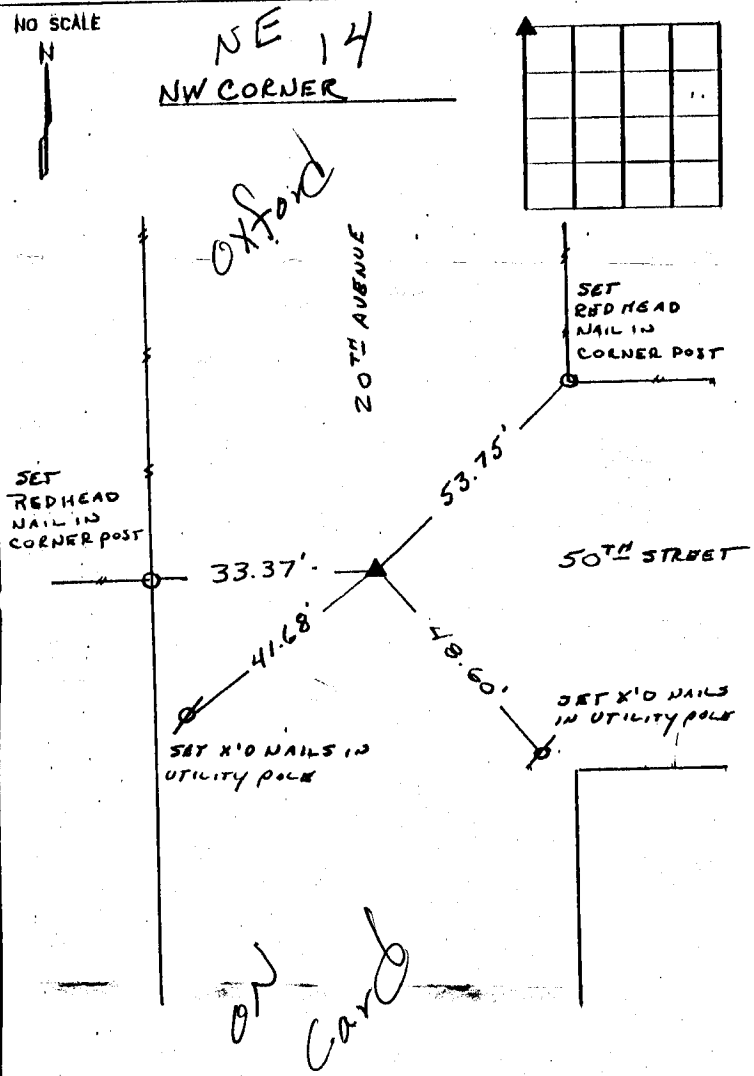


UNITED STATES PUBLIC LAND SURVEY CORNER CERTIFICATE

LAND SURVEY MONUMENTS SITUATED IN SECTION 13, TOWNSHIP 03 NORTH;
RANGE 7 WEST OF THE 5TH P.M., JONES COUNTY, IOWA.



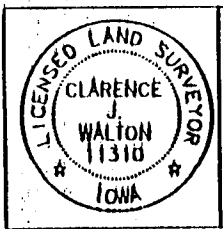
PREVIOUSLY RECORDED IN BOOK _____ PAGE _____

MONUMENT DESCRIPTION AND HOW ESTABLISHED _____

FOUND $\frac{5}{8}$ " REBAR 6" BELOW ROAD SURFACE

PREVIOUSLY RECORDED IN BOOK _____ PAGE _____

MONUMENT DESCRIPTION AND HOW ESTABLISHED _____



I hereby certify that this land surveying document and the related survey work was performed by me or under my direct personal supervision, and that I am a duly licensed Land Surveyor under the laws of the State of Iowa.

Signed: Clarence J. Walton Date: 11/26/97

Clarence J. Walton, L.S.
My License Renewal Date is December 31, 1997
License Number 11310
Pages or sheets covered by this sheet: 1 of 1

CORNERS TO BE INDEXED			
CORNER	SECTION	TOWNSHIP	RANGE
NW	13	03N	1W

BRAIN ENGINEERING, INC.
603 WEST MAIN STREET
ANAMOSA, IOWA 52205
(319) 462-5782