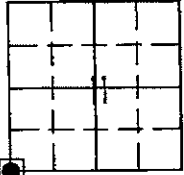


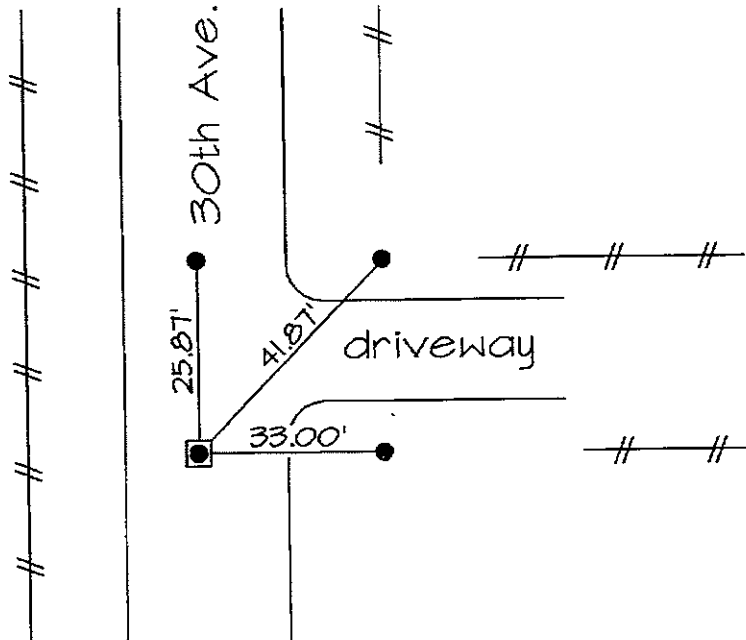
MARIE KRUTZFIELD, RECORDER  
 JONES COUNTY, IOWA

Prepared by: Richard M. Kordick, P.E., L.S., 120 East Main, Suite D, Anamosa, IA 52205 Phone: (319) 462-4498

U.S. PUBLIC LAND SURVEY CORNER CERTIFICATE



11-83N-1W  
 Jones County  
 OXFORD Township



Plan-View No Scale

Section corner location: SW Corner, Section 11-83-1

Reason for corner tie:

- A) There is no certificate for the corner on file with the recorder.
- B) Corner position differs from previously recorded certificate recorded in book , page
- C) Corner monument was replaced or modified.
- D) Reference ties in previously recorded certificate recorded in book , page are incorrect or missing.

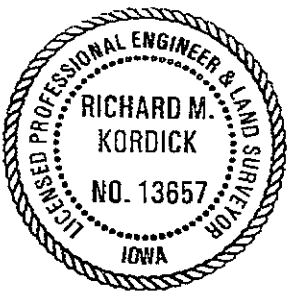
Research at the recorder's office, auditor's office, and engineer's office revealed the following:  
 None.

Field search performed was as follows:

Field search was performed with a metal detector, excavation and probing. Nothing was found.

Monument found or set:

The corner was determined to be obliterated. A 1/2" rebar with red cap "Kordick 13657" was set, 4" deep, on-line with the fence to the east and in the middle of the 30th Ave. right-of-way as perpetuated by the right-of-way fences.



I hereby certify that this land surveying document was prepared and the related survey work was performed by me or under my direct personal supervision and that I am a duly licensed Land Surveyor under the laws of the State of Iowa.

*Richard M. Kordick* 9/21/2006  
 Richard M. Kordick date

License number 13657

My license renewal date is December 31, 2007.

Pages or sheets covered by this seal: 1 of 1

LEGEND:

- Section Corner as noted
- ⊕ Power Pole
- Section line
- Centerline
- ## Existing Fence
- ( ) Recorded Dist.

**Kordick Surveying & Engineering**  
 120 East Main, Suite D  
 Anamosa, Iowa 52205  
 (319) 462-4498

U.S. Public Land  
 Survey Corner Certificate

Project: Plat of Survey  
 Parcel No. 2006-139

Field BK  
 06082  
 Date  
 9-21-06  
 Job No.  
 06082  
 Sheet  
 1 of 1