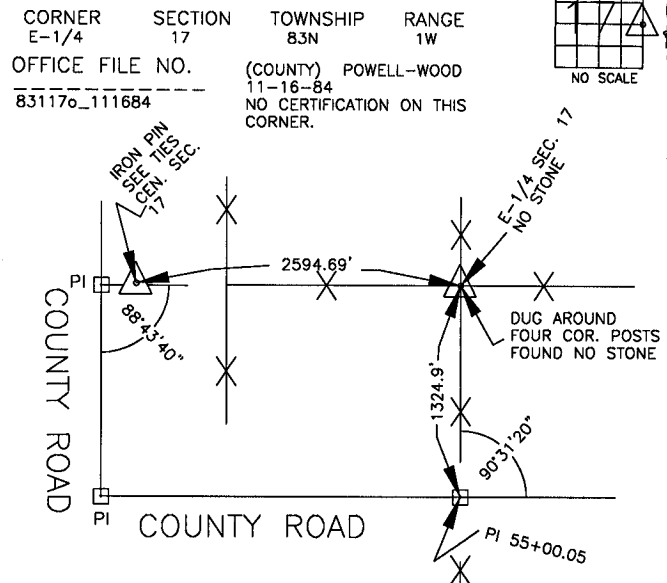


UNITED STATES PUBLIC LAND SURVEY CORNER CERTIFICATE

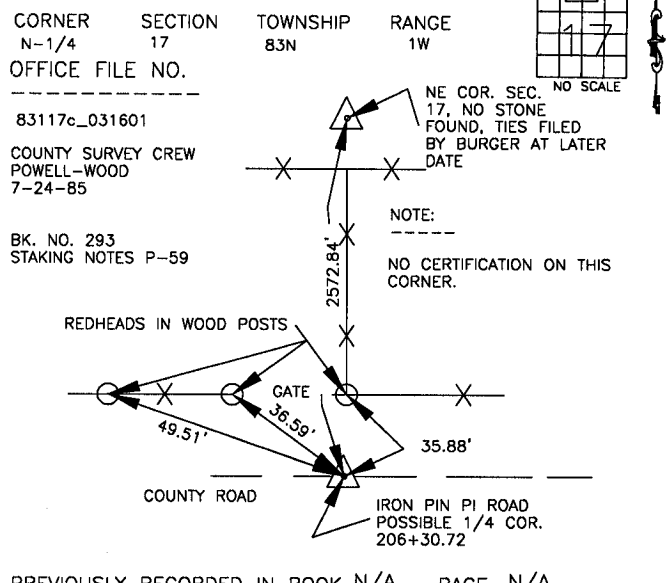
LAND SURVEY MONUMENTS SITUATED IN SECTION 17, TOWNSHIP 83
NORTH, RANGE 1 WEST OF THE 5TH P.M., JONES COUNTY, IOWA

986 CORNERS TO BE INDEXED



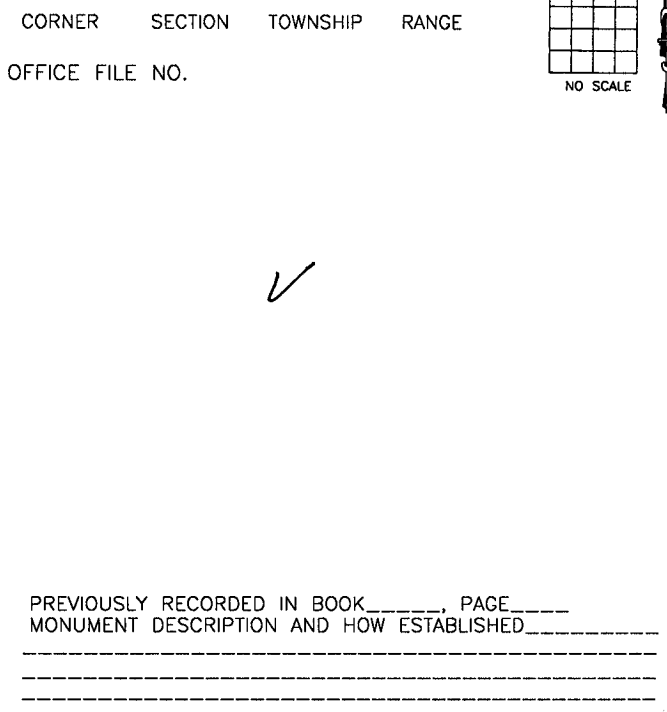
PREVIOUSLY RECORDED IN BOOK N/A, PAGE N/A
MONUMENT DESCRIPTION AND HOW ESTABLISHED _____
DUG AND PROBED AROUND FOUR-WAY FENCE INTERSECTION, FOUND NO
EVIDENCE OF STONE OR ORIGINAL COR. NOTE DISTANCE TO CENTER
OF SECTION 17. (EAST QUARTER OF SECTION 17, TOWNSHIP 83 NORTH,
RANGE 1 WEST

CORNERS TO BE INDEXED

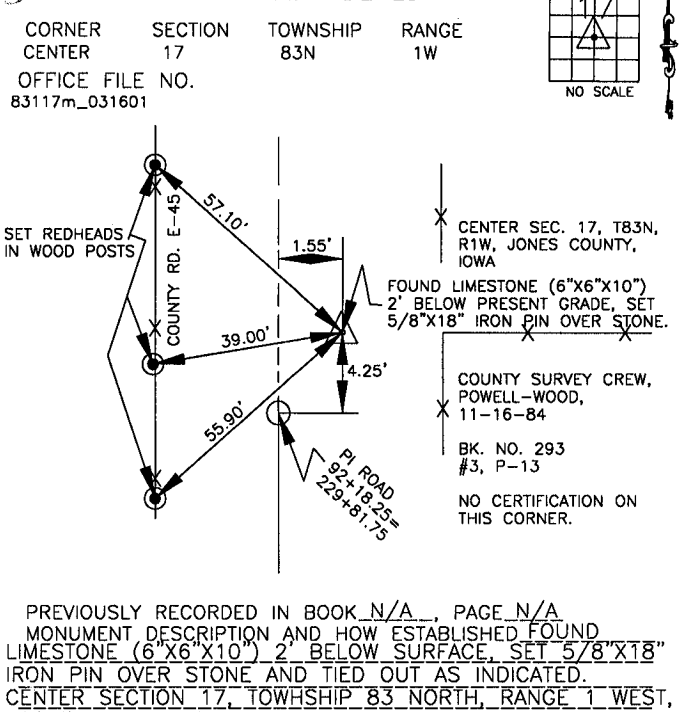


PREVIOUSLY RECORDED IN BOOK N/A, PAGE N/A
MONUMENT DESCRIPTION AND HOW ESTABLISHED FOUND
IRON PIN AT PI IN ROAD. APPEARS TO BE GOOD POSITION
FOR QUARTER CORNER. NORTH QUARTER SECTION 17,
TOWNSHIP 83 NORTH, RANGE 1 WEST, JONES COUNTY,
IOWA. SET REFERENCE POINTS AND TIED OUT AS INDICATED.

CORNERS TO BE INDEXED



987 CORNERS TO BE INDEXED



PREVIOUSLY RECORDED IN BOOK N/A, PAGE N/A
MONUMENT DESCRIPTION AND HOW ESTABLISHED FOUND
LIMESTONE (6"X6"X10") 2' BELOW SURFACE, SET 5/8"X18"
IRON PIN OVER STONE AND TIED OUT AS INDICATED.
CENTER SECTION 17, TOWNSHIP 83 NORTH, RANGE 1 WEST,
JONES COUNTY, IOWA.

~~I hereby declare that this plat, survey or report was made by me or under my direct personal supervision and that I am a duly registered Land Surveyor under the laws of the State of Iowa.~~

Signed: _____

Joseph D. Tjepkes L.S. Iowa Reg. No. 14807
My Registration Renewal Date is December 31, 2002

SEAL

JONES COUNTY ENGINEER'S OFFICE

19501 HWY. 64,
ANAMOSA, IOWA,
52205 (319)462-3785