

LOCATION: S.W. 1/4 N.W. 1/4 SEC16 T83N R1W

REQUESTER: RYAN ANDRESEN  
4684 50TH AVE.  
OXFORD JUNCTION, IOWA 52323

PROPRIETOR: RYAN ANDRESEN  
4684 50TH AVE.  
OXFORD JUNCTION, IOWA 52323

SURVEYOR: DOUGLAS M. HINKLE, PLS

SURVEYOR COMPANY: HINKLE SURVEYING

RETURN TO: HINKLE SURVEYING  
1117 SPRINGBROOK LANE  
DEWITT, IA 52742  
PHONE (563) 219-1087

Instrument #: 2021-1121  
03/25/2021 09:07:15 AM Total Pages: 1  
ZSC SECTION CORNER CERTIFICATE  
Recording Fee: \$7.00 Transfer Tax: \$0  
Sheri L. Jones, Recorder, Jones County Iowa



### UNITED STATES PUBLIC LAND SURVEY CORNER CERTIFICATE

Land Survey Monuments situated in Section 16, Township 83 N, Range 1 W, of the Fifth Principal Meridian, JONES County, Iowa.  
Previously recorded in BOOK 395, PAGE 305 in County Recorder's Office.

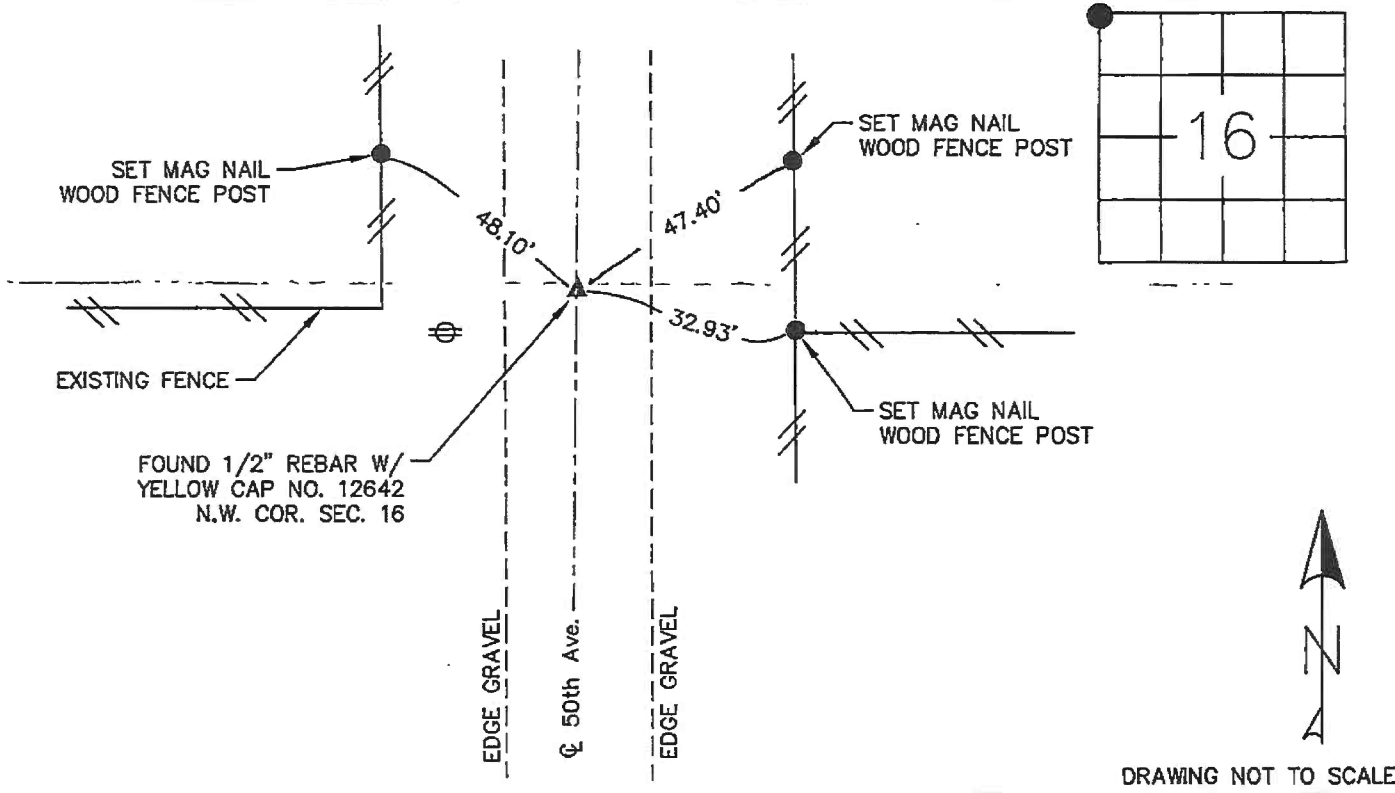
(book, page, document number, etc.)

(Show reason for preparing this certificate, the evidence and detailed procedures used in establishing the corner positions and monumentation found or placed.)

Monument Description and Remarks: FOUND 1/2" REBAR W/ YELLOW NO. 12642 CAP AT NORTHWEST CORNER.

PREPARED CERTIFICATE BECAUSE REFERENCE TIES WERE MISSING.

PROJECT # 21-2244



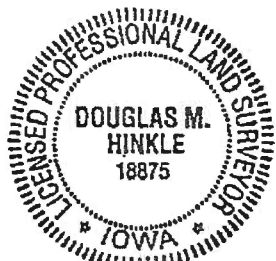
DRAWING NOT TO SCALE

I hereby certify that the survey work was completed and this land surveying document was prepared by me or under my direct personal supervision and that I am a duly licensed land surveyor under the laws of the state of Iowa

Signature: *D. M. Hinkle*  
Name typed or printed: DOUGLAS M HINKLE

Date: 3/24/2021 Reg. No. 18875  
My registration renewal date is December 31, 2021

SEAL



List Corners to be Indexed

Corners	Section	Twp	Range
N.W. COR.	16	83 NORTH	1 WEST

Oxford

Wm. Burger Land Surveyors 510 3rd St. West Court Worthington, Iowa Phone 319 855 2028

UNITED STATES PUBLIC LAND SURVEY CORNER CERTIFICATE

OF

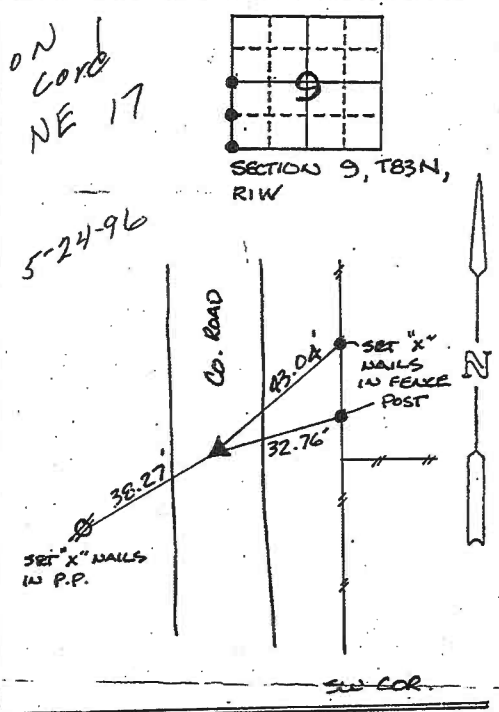
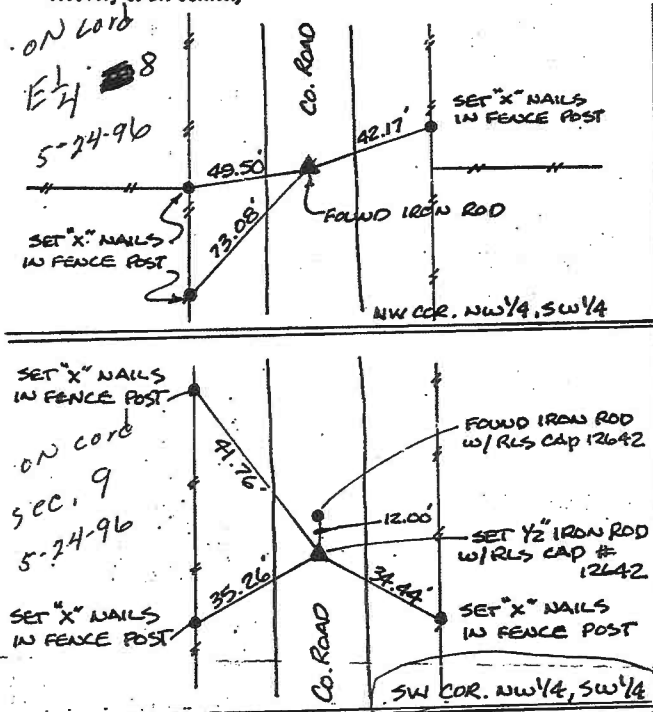
Land Survey Monuments situated in Section NINE (9), Township 83 NORTH, Range ONE WEST, of the Fifth Principal Meridian, JONES County, Iowa. Previously recorded in DOES NOT APPLY in County Recorder's Office.

(Show reason for preparing this certificate, the evidence and detailed procedures used in establishing the corner positions and monumentation found or placed.)

Monument Description and Remarks: NW CORNER NW 1/4 SW 1/4 - FOUND IRON ROD, USED 1982 TIES. SW CORNER NW 1/4 SW 1/4 - SET 1/2" IRON ROD W/ RLS CAP # 12642 ON LINE & MIDWAY BETWEEN THE W 1/4 COR. & SW CORNER OF SAID SEC. 9. SW CORNER - SET 1/2" IRON ROD W/ RLS CAP # 12642 @ 1/2 OF COUNTY ROADWAY & DOUBLED THE DISTANCE OF NW CORNER & W 1/4 CORNER OF SAID SEC. 9  
NOTE: NO CORNER CERTIFICATE WAS FOUND @ COUNTY RECORDERS OFFICE

PLAN - VIEW

(Show a minimum of three reference ties to durable physical objects, relevant monuments and physical conditions that will enable recovery of the corner.)



I hereby certify that the survey work was completed and this certificate was prepared by me or under my direct personal supervision and that I am a duly registered land surveyor under the laws of the state of Iowa.

Signature: William H. Burger  
Name typed or printed: WILLIAM H. BURGER  
Date: 3/19/96 Reg. No. 12642

Corners	Section	Twp	Range
NW, NW 1/4, SW 1/4	9	83N	1W
SW, NW 1/4, SW 1/4	9	83N	1W
SW	9	83N	1W

SEAL

