

831240- 101201. ~~T.A.~~

PREPARED BY:
Landmark 511 South 4th Street
 Clinton, IA 52732
 ENGINEERING GROUP, INC. (563) 243-1398

SLSI 9-90

UNITED STATES PUBLIC LAND SURVEY CORNER CERTIFICATE
 OF

Land Survey Monuments situated in Section 18, Township 83 NORTH, Range 1 EAST, of the Fifth Principal Meridian, CLINTON County, Iowa.

Previously recorded in N/A, Page N/A in County Recorder's Office.

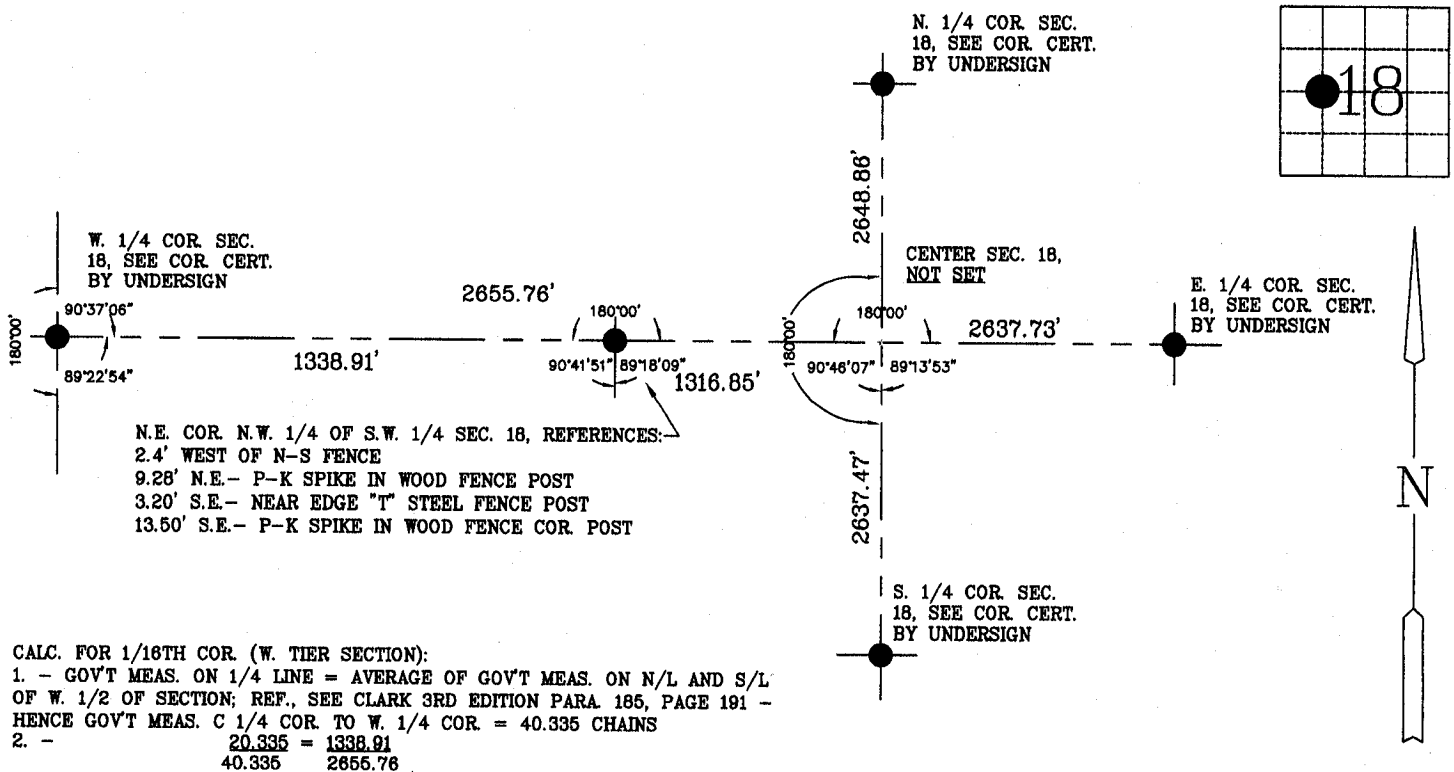
(Show reason for preparing this certificate, the evidence and detailed procedures used in establishing the corner positions and monumentation found or placed.)

Monument Description and Remarks: N.E. COR. OF N.W. 1/4 OF S.W. 1/4 SEC. 18, 1/2" ROUND IRON ROD STAKE SET ON STRAIGHT LINE BETWEEN THE E. 1/4 COR. AND W. 1/4 COR. SEC. 18 AND AT PRORATA BETWEEN THE CENTER AND W. 1/4 COR. SEC. 18, PER CLARK 3RD ADDITION (SEE NOTE) SEARCH AREA 10'.

NO. 04-01-690

PLAN - VIEW

(Show a minimum of three reference ties to durable physical objects, relevant monuments and physical conditions that will enable recovery of the corner.)

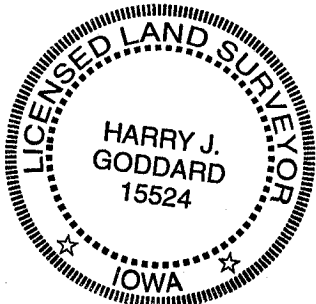


CALC. FOR 1/16TH COR. (W. TIER SECTION):
 1. - GOV'T MEAS. ON 1/4 LINE = AVERAGE OF GOV'T MEAS. ON N/L AND S/L OF W. 1/2 OF SECTION; REF., SEE CLARK 3RD EDITION PARA 185, PAGE 191 - HENCE GOV'T MEAS. C 1/4 COR. TO W. 1/4 COR. = 40.335 CHAINS
 2. - 20.335 = 1338.91
 40.335 = 2655.76

I hereby certify that this land surveying document was prepared and the related survey work was performed by me or under my direct personal supervision and that I am a duly licensed land surveyor under the laws of the State of Iowa.

Harry J. Goddard
 Harry J. Goddard Date Oct 12, 2001

My license is subject to renewal on Dec. 31, 2002
 License No. 15524



Only those copies of this page signed in red color and displaying surveyors original

Seal are to be considered certified official copies. (Iowa Admin. Code 193C-1.30)

List Corners to be Indexed

Corners	Section	Twp	Range
N.E. COR N.W. 1/4 OF S.W. 1/4	18	83N	1E