

PREPARED BY
 CLARENCE J. WALTON, JONES COUNTY ENGINEER'S OFFICE, 19501 HWY. 64, ANAMOSA, IOWA, 52205 (319) 462-3785

UNITED STATES PUBLIC LAND SURVEY CORNER CERTIFICATE

**LAND SURVEY MONUMENTS SITUATED IN SECTION 18, TOWNSHIP 83 NORTH,
 RANGE 1 WEST OF THE 5TH PRINCIPAL MERIDIAN, JONES COUNTY, IOWA.**

OFFICE FILE NO.

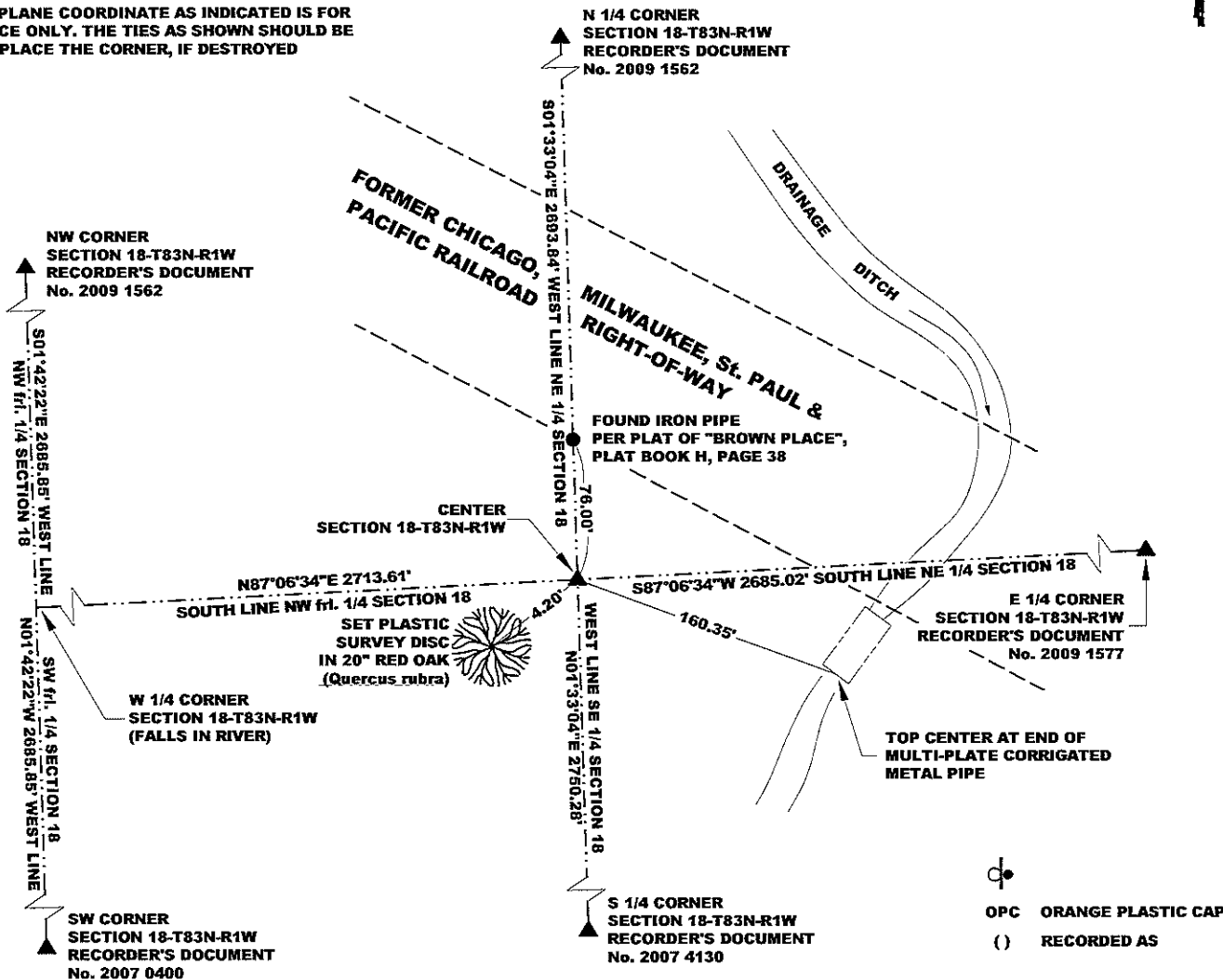
NE CORNER SECTION 18-T83N-R1W
 STATE PLANE COORDINATE
 NAD 83 IOWA NORTH
 N 3472201.47
 E 5599382.69

CORNER SECTION TOWNSHIP RANGE
 CENTER 18 T83N R1W

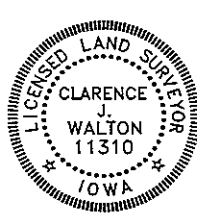


NO SCALE

NOTE:
 THE STATE PLANE COORDINATE AS INDICATED IS FOR CONVENIENCE ONLY. THE TIES AS SHOWN SHOULD BE USED TO REPLACE THE CORNER, IF DESTROYED



PREVIOUSLY RECORDED IN RECORDER'S DOCUMENT N/A
MONUMENT DESCRIPTION AND HOW ESTABLISHED SET 5/8" REBAR WITH ORANGE PLASTIC CAP #11310 FLUSH WITH SURFACE AT INTERSECTION OF LINES FROM OPPOSITE QUARTER SECTION CORNERS. ALSO SET MAGNET AND STEEL FENCE POST WITH "SURVEY MARKER" SIGN AS WITNESS TO CORNER ON EAST SIDE OF REBAR. PLACEMENT OF S 1/4, E 1/4, SW, AND NW CORNERS OF SECTION 18-T83N-R1W INDICATE A LOCATION OF THE CENTER OF SAID SECTION 18 THAT DIFFERS FROM THAT SHOWN "BROWN PLACE" PLAT, RECORDED IN PLAT BOOK H, PAGE 38 IN THE JONES COUNTY, IOWA RECORDER'S OFFICE. NO MONUMENT WAS FOUND NOR WAS ANY PHYSICAL EVIDENCE FOUND TO INDICATE THAT A CORNER OF ANY SORT EVER EXISTED HERE.
 FIELD BOOK: MISC. 2009, PAGE 157. DATE OF SURVEY: 4/29/09



I hereby certify that this land surveying document and the related survey work was performed by me or under my direct personal supervision and that I am a duly registered Land Surveyor under the laws of the State of Iowa.
 Signed: *Clarence J. Walton* 5/13/09
 Clarence J. Walton, L.S.
 My Registration Renewal Date is December 31, 2009
 Iowa License Number 11310
 Pages or sheets covered by this seal: 1 of 1

- A. THERE IS NO CERTIFICATE FOR THE CORNER ON FILE WITH THE RECORDER OF THE COUNTY IN WHICH THE CORNER IS LOCATED.
- B. THE CORNER MONUMENT HAS BEEN REPLACED OR MODIFIED.
- C. THE SURVEYOR IN RESPONSIBLE CHARGE OF THE LAND SURVEYING ACCEPTS A CORNER POSITION THAT DIFFERS FROM THAT SHOWN IN THE PUBLIC RECORDS OF THE COUNTY IN WHICH THE CORNER IS LOCATED.
- D. THE REFERENCE TIES REFERRED TO IN AN EXISTING PUBLIC RECORD NO LONGER EXIST.

CORNERS TO BE INDEXED			
CORNER	SECTION	TOWNSHIP	RANGE
CENTER	18	83N	1W

JONES COUNTY ENGINEER'S OFFICE

19501 HWY. 64, ANAMOSA, IOWA 52205
 (319) 462-3785