

Marie Krutzfield, Recorder
 Jones County, Iowa

PREPARED BY
 CLARENCE J. WALTON, JONES COUNTY ENGINEER'S OFFICE, 19501 HWY. 64, ANAMOSA, IOWA, 52205 (319) 462-3785

UNITED STATES PUBLIC LAND SURVEY CORNER CERTIFICATE

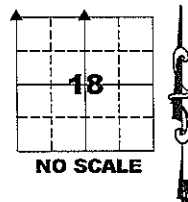
**LAND SURVEY MONUMENTS SITUATED IN SECTION 18, TOWNSHIP 83 NORTH,
 RANGE 1 WEST OF THE 5TH PRINCIPAL MERIDIAN, JONES COUNTY, IOWA.**

OFFICE FILE NO.

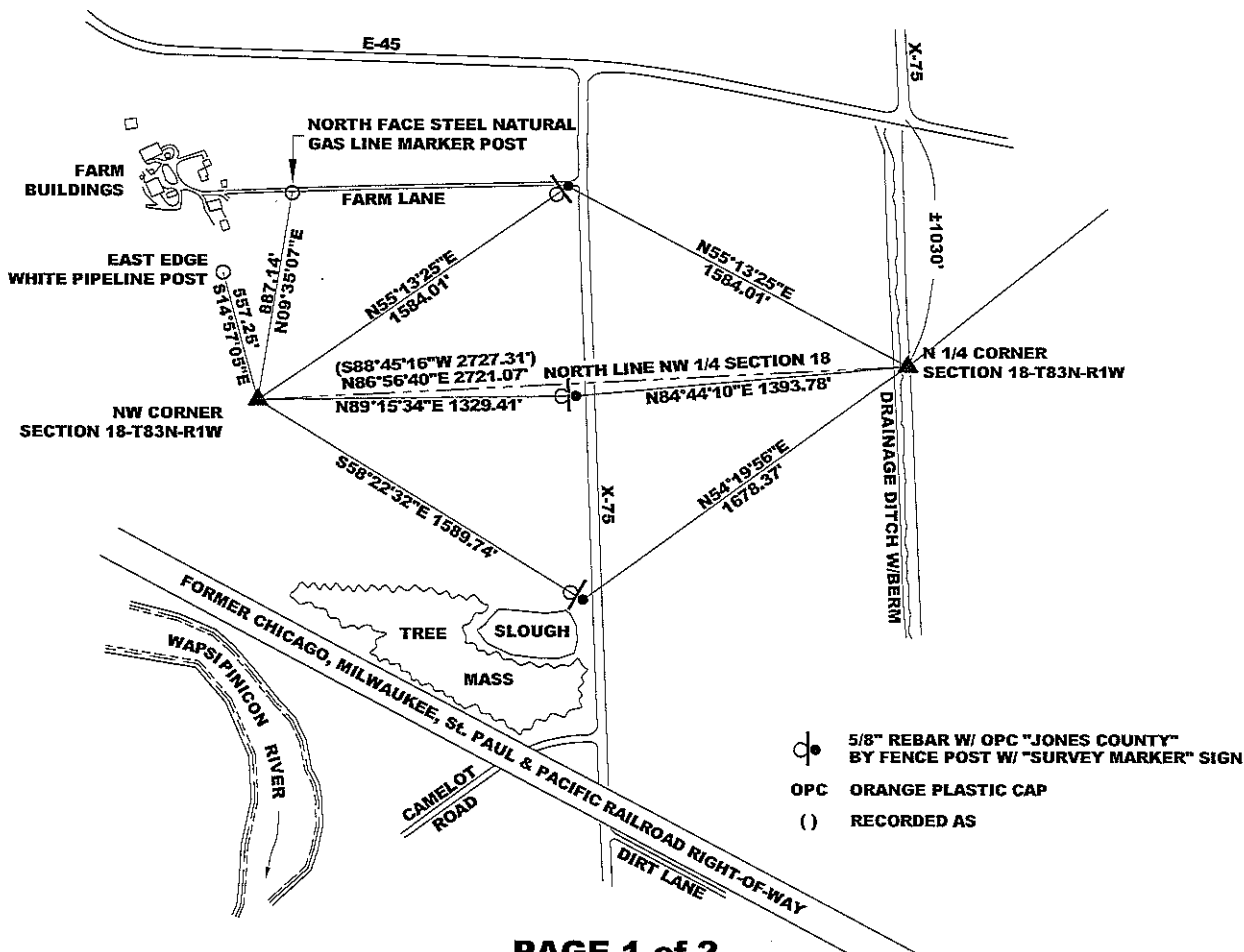
NW CORNER SECTION 18-T83N-R1W
 STATE PLANE COORDINATE
 NAD 83 IOWA NORTH
 N 3474749.27
 E 5596592.57

N 1/4 CORNER SECTION 18-T83N-R1W
 STATE PLANE COORDINATE
 NAD 83 IOWA NORTH
 N 3474894.32
 E 5599309.77

CORNER	SECTION	TOWNSHIP	RANGE
NW	18	T83N	R1W
N 1/4	18	T83N	R1W



NOTE:
 THE STATE PLANE COORDINATE AS INDICATED IS FOR CONVENIENCE ONLY.
 THE TIES AS SHOWN SHOULD BE USED TO REPLACE THE CORNER, IF
 DESTROYED



PAGE 1 of 2

PREVIOUSLY RECORDED IN RECORDER'S DOCUMENT N/A
 MONUMENT DESCRIPTION AND HOW ESTABLISHED NW CORNER SECTION 18-T83N-R1W: PROBES EXTENSIVELY BUT FOUND NO MONUMENT. NO EVIDENCE WAS FOUND OF LOCATION OF SECTION CORNER. PLATS RECORDED IN PLAT BOOK G, PAGE 103, IN PLAT BOOK H, PAGE 22, AND IN PLAT BOOK H, PAGE 104 SHOW NO INDICATION OF ANY MONUMENT FOUND OR SET. SINGLE PROPORTIONATE MEASUREMENT FROM THE SW CORNER OF SAID SECTION 18 TO THE W 1/4 CORNER OF SECTION 7-T83N-R1W SHOWS A VERY CLOSE CORRELATION WITH THE CORNER REFERENCES SHOWN ON THE AFOREMENTIONED PLATS AND WITH FOUND PROPERTY CORNERS OF CAMELOT CAMPGROUND. I THEREFORE SET THE NW CORNER OF SAID SECTION 18 ACCORDINGLY BY
 (CONTINUED ON PAGE 2.)

I hereby certify that this land surveying document and the related survey work was performed by me or under my direct personal supervision and that I am a duly registered Land Surveyor under the laws of the State of Iowa.
 Signed: *Clarence J. Walton* 5/5/09
 Clarence J. Walton, L.S.
 My Registration Renewal Date is December 31, 2009
 Iowa License Number 11310
 Pages or sheets covered by this seal: 1 of 2 and 2 of 2.

CORNERS TO BE INDEXED			
CORNER	SECTION	TOWNSHIP	RANGE
NW	18	83N	1W
NE	13	83N	2W
SE	12	83N	2W
SW	7	83N	1W
N 1/4	18	83N	1W
S 1/4	7	83N	1W

- A. THERE IS NO CERTIFICATE FOR THE CORNER ON FILE WITH THE RECORDER OF THE COUNTY IN WHICH THE CORNER IS LOCATED.
- B. THE CORNER MONUMENT HAS BEEN REPLACED OR MODIFIED.
- C. THE SURVEYOR IN RESPONSIBLE CHARGE OF THE LAND SURVEYING ACCEPTS A CORNER POSITION THAT DIFFERS FROM THAT SHOWN IN THE PUBLIC RECORDS OF THE COUNTY IN WHICH THE CORNER IS LOCATED.
- D. THE REFERENCE TIES REFERRED TO IN AN EXISTING PUBLIC RECORD NO LONGER EXIST.

JONES COUNTY ENGINEER'S OFFICE

19501 HWY. 64, ANAMOSA, IOWA 52205
 (319) 462-3785

PREPARED BY
 CLARENCE J. WALTON, JONES COUNTY ENGINEER'S OFFICE, 19501 HWY. 64, ANAMOSA, IOWA, 52205 (319) 462-3785

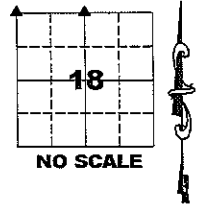
**UNITED STATES PUBLIC LAND
 SURVEY CORNER CERTIFICATE**
**LAND SURVEY MONUMENTS SITUATED IN SECTION 18, TOWNSHIP 83 NORTH,
 RANGE 1 WEST OF THE 5TH PRINCIPAL MERIDIAN, JONES COUNTY, IOWA.**

OFFICE FILE NO.

NW CORNER SECTION 18-T83N-R1W
 STATE PLANE COORDINATE
 NAD 83 IOWA NORTH
 N 3565384.77
 E 5507070.36

N 1/4 CORNER SECTION 18-T83N-R1W
 STATE PLANE COORDINATE
 NAD 83 IOWA NORTH
 N 3565384.77
 E 5507070.36

CORNER	SECTION	TOWNSHIP	RANGE
NW	18	T83N	R1W
N 1/4	18	T83N	R1W



NOTE:
 THE STATE PLANE COORDINATE AS INDICATED IS FOR CONVENIENCE ONLY.
 THE TIES AS SHOWN SHOULD BE USED TO REPLACE THE CORNER, IF
 DESTROYED

MONUMENT DESCRIPTION AND HOW ESTABLISHED (CONTINUED FROM PAGE 1) SINGLE PROPORTIONATE MEASUREMENT BETWEEN THE SW CORNER OF SAID SECTION 18 AND THE W 1/4 CORNER OF SAID SECTION 7. SET 5/8" REBAR WITH ORANGE PLASTIC CAP #11310 24 INCHES BELOW SURFACE. N 1/4 CORNER SECTION 18-T83N-R1W: FOUND 3/4" ROD 24 INCHES BELOW SURFACE ON APPROXIMATELY 5 FEET EAST OF TOP OF EAST BERM OF DRAINAGE DITCH PER PLAT OF "BROWN'S PLACE" RECORDED IN PLAT BOOK H, PAGE 38 IN THE JONES COUNTY, IOWA RECORDER'S OFFICE. LOCATION OF CORNER VERY CLOSELY MATCHES PLATTED POSITION USING FOUND CALLED FOR MONUMENTS OF "BROWN'S PLACE". SET 5/8" X 24" REBAR WITH ORANGE PLASTIC CAP #11310. ALSO SET STEEL FENCE POST WITH "SURVEY MARKER" SIGN NEARBY AS A WITNESS TO CORNER.

FIELD BOOK MISC. 2009, PAGE 160. DATE OF SURVEY: 4/23/09

PAGE 2 of 2

CORNERS TO BE INDEXED			
CORNER	SECTION	TOWNSHIP	RANGE
NW	18	83N	1W
NE	13	83N	2W
SE	12	83N	2W
SW	7	83N	1W
N 1/4	18	83N	1W
S 1/4	7	83N	1W

JONES COUNTY ENGINEER'S OFFICE



19501 HWY. 64, ANAMOSA, IOWA 52205
 (319) 462-3785

UNITED STATES PUBLIC LAND SURVEY CORNER CERTIFICATE

LAND SURVEY MONUMENTS SITUATED IN SECTION 18, TOWNSHIP 83
NORTH, RANGE 1 WEST OF THE 5TH P.M., JONES COUNTY, IOWA

980 CORNERS TO BE INDEXED

CORNER	SECTION	TOWNSHIP	RANGE
NORTHEAST	18	83N	1W

OFFICE FILE NO. 83118e_031601

NO CERTIFICATION ON THIS CORNER.

COUNTY SURVEY CREW POWELL-WOOD 11-16-84
BK. NO. 293, #3, P-24

NE COR. SEC. 18, FD. NO STONE

PREVIOUSLY RECORDED IN BOOK N/A, PAGE N/A
MONUMENT DESCRIPTION AND HOW ESTABLISHED SEARCHED AROUND FENCE CORNER. FOUND NO EVIDENCE OF STONE TIED WITH DISTANCES TO ROAD PIs, NORTHEAST CORNER OF SECTION 18, TOWNSHIP 83 NORTH, RANGE 1 WEST, JONES COUNTY, IOWA

985 CORNERS TO BE INDEXED

CORNER	SECTION	TOWNSHIP	RANGE
N1/4	18	83N	1W

OFFICE FILE NO. 83118c_032701

COUNTY CREW POSTEL-POWELL 6-78 BK. 276, P-2

(NO CERTIFICATION) (ON THIS CORNER)

PREVIOUSLY RECORDED IN BOOK N/A, PAGE N/A
MONUMENT DESCRIPTION AND HOW ESTABLISHED AFTER PROJECTING 1/4 SEC. LINE SOUTH THROUGH SEC. 7 & PROJECTING 1/4 SEC. LINE NORTH THROUGH SEC. 18 & SEEING THAT THEY WERE VERY CLOSE TO TO INTERSECTING AT N1/4 COR. SEC. 18, WE WENT EAST TO N.E. COR. SEC. 18 & PROJECTED SEC. LINE BACK WEST & INTERSECTED NORTH-SOUTH 1/4

CORNERS TO BE INDEXED

CORNER	SECTION	TOWNSHIP	RANGE

OFFICE FILE NO. _____

PREVIOUSLY RECORDED IN BOOK _____, PAGE _____
MONUMENT DESCRIPTION AND HOW ESTABLISHED _____

CORNERS TO BE INDEXED

CORNER	SECTION	TOWNSHIP	RANGE

OFFICE FILE NO. _____

PREVIOUSLY RECORDED IN BOOK _____, PAGE _____
MONUMENT DESCRIPTION AND HOW ESTABLISHED _____

~~I hereby declare that this plat, survey or report was made by me or under my direct personal supervision and that I am a duly registered Land Surveyor under the laws of the State of Iowa.~~

Signed: _____

Joseph D. Tjepkes L.S. Iowa Reg. No. 14807
My Registration Renewal Date is December 31, 2002

SEAL

JONES COUNTY ENGINEER'S OFFICE

19501 HWY. 64,
ANAMOSA, IOWA,
52205 (319)462-3785

UNITED STATES PUBLIC LAND SURVEY CORNER CERTIFICATE
 OF

Land Survey Monuments situated in Section 18, Township 83 NORTH, Range 1 EAST, of the Fifth Principal Meridian, CLINTON County, Iowa.

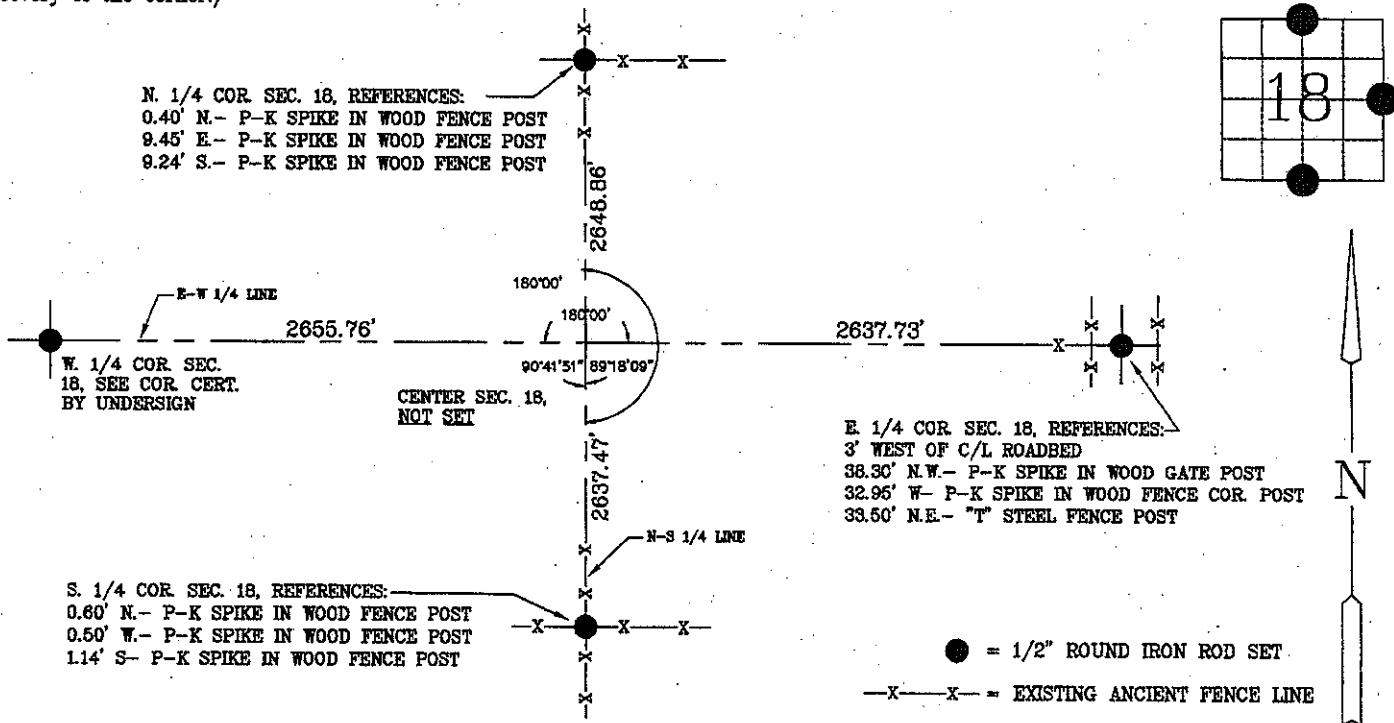
Previously recorded in N/A, Page N/A in County Recorder's Office.

(Show reason for preparing this certificate, the evidence and detailed procedures used in establishing the corner positions and monumentation found or placed.)

Monument Description and Remarks: N. 1/4 COR. SEC. 18, SET 1/2" ROUND IRON ROD STAKE PER EXISTING ANCIENT FENCE LINE N-S-E-W, SEARCH AREA 10'; E. 1/4 COR. SEC. 18, SET 1/2" ROUND IRON ROD STAKE MIDWAY BETWEEN ROAD R-O-W FENCE AND IN LINE WITH ANCIENT FENCE LINE WEST, SEARCH AREA 15'; S. 1/4 COR. SEC. 18, SET 1/2" ROUND IRON ROD STAKE IN LINE WITH ANCIENT FENCE LINE N-S-E-W, SEARCH AREA 10' NO. 04-01-690

PLAN - VIEW

(Show a minimum of three reference ties to durable physical objects, relevant monuments and physical conditions that will enable recovery of the corner.)



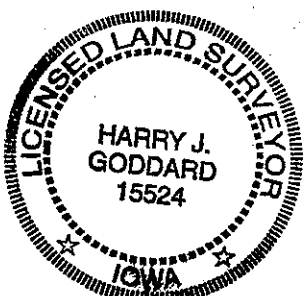
I hereby certify that this land surveying document was prepared and the related survey work was performed by me or under my direct personal supervision and that I am a duly licensed land surveyor under the laws of the State of Iowa.

Harry J. Goddard
 Harry J. Goddard Date Oct 17, 2001

My license is subject to renewal on Dec. 31, 2002
 License No. 15524

List Corners to be Indexed

Corners	Section	Twp	Range
E 1/4 COR.	18	83N	1E
S. 1/4	18	83N	1E
N. 1/4 COR.	18	83N	1E



Only those copies of this page signed in red color and displaying surveyors original
 Seal are to be considered certified official copies.
 (Iowa Admin. Code 193C-1.30)