

FEE BOOK: 2009 1577 5/7/2009 9:31 AM
 REC FEES: NO FEE
 PAGES: 2 Marie Krutzfield, Recorder
 Jones County, Iowa

PREPARED BY
 CLARENCE J. WALTON, JONES COUNTY ENGINEER'S OFFICE, 19501 HWY. 64, ANAMOSA, IOWA, 52205 (319) 462-3785

UNITED STATES PUBLIC LAND SURVEY CORNER CERTIFICATE

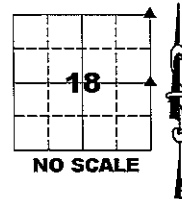
LAND SURVEY MONUMENTS SITUATED IN SECTION 18, TOWNSHIP 83 NORTH,
 RANGE 1 WEST OF THE 5TH PRINCIPAL MERIDIAN, JONES COUNTY, IOWA.

OFFICE FILE NO.

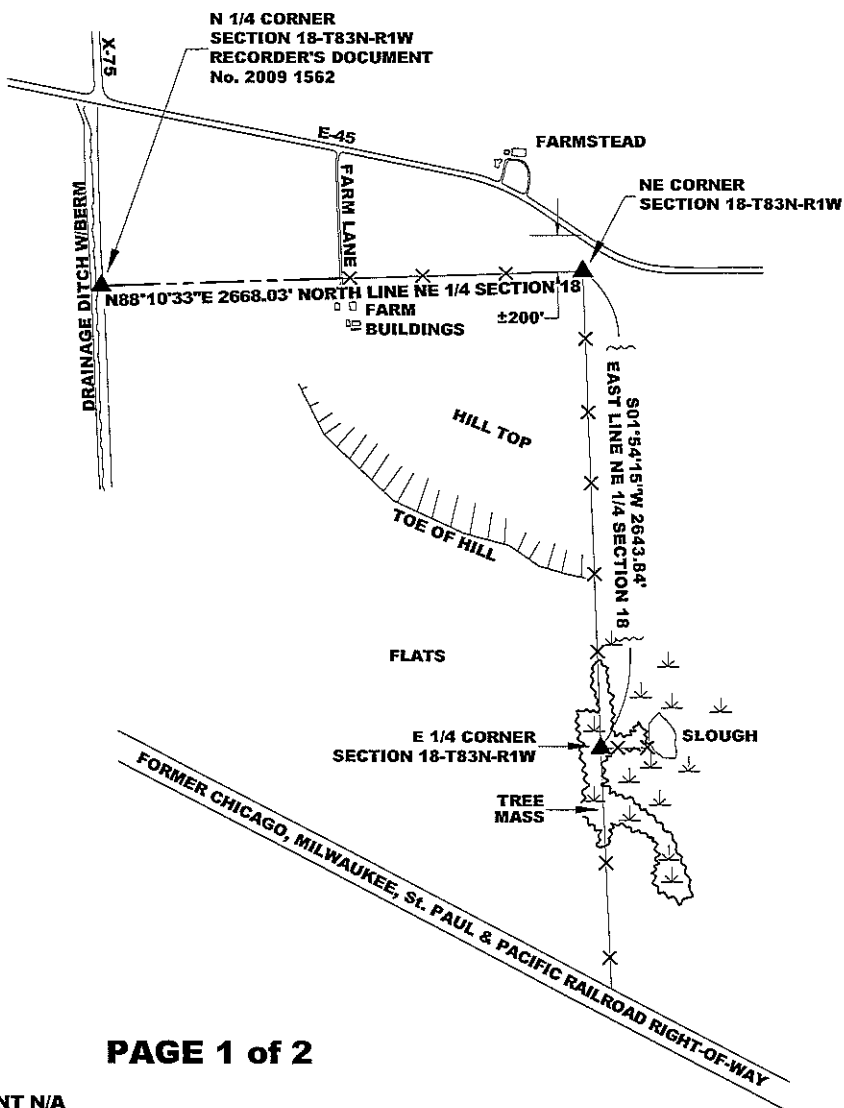
NE CORNER SECTION 18-T83N-R1W
 STATE PLANE COORDINATE
 NAD 83 IOWA NORTH
 N 3474979.25
 E 5601976.45

E 1/4 CORNER SECTION 18-T83N-R1W
 STATE PLANE COORDINATE
 NAD 83 IOWA NORTH
 N 3472336.87
 E 5602064.30

CORNER	SECTION	TOWNSHIP	RANGE
NE	18	T83N	R1W
E 1/4	18	T83N	R1W



NOTE:
 THE STATE PLANE COORDINATE AS INDICATED IS FOR
 CONVENIENCE ONLY. THE TIES AS SHOWN SHOULD BE
 USED TO REPLACE THE CORNER, IF DESTROYED



PROXIMITY MAP

(SEE FOLLOWING PAGES FOR TIES)



OPC ORANGE PLASTIC CAP

() RECORDED AS

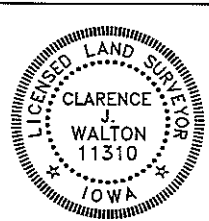
PAGE 1 of 2

PREVIOUSLY RECORDED IN RECORDER'S DOCUMENT N/A

MONUMENT DESCRIPTION AND HOW ESTABLISHED NE CORNER SECTION 18-T83N-R1W: FOUND 1/2" REBAR AT FENCE CORNER. PROBED FOR STONE, FOUND NONE. E 1/4 CORNER SECTION 18-T83N-R1W: FOUND 1/2" REBAR W/YPC #6586 AT SURFACE PER PLAT OF SURVEY, PARCEL 2001-38 RECORDED IN PLAT BOOK O, PAGE 28 IN THE JONES COUNTY, IOWA RECORDER'S OFFICE.

FIELD BOOK: MISC. 2009, PAGE 158. DATE OF SURVEY: 4/24/09

I hereby certify that this land surveying document and the related survey work was performed by me or under my direct personal supervision and that I am a duly registered Land Surveyor under the laws of the State of Iowa.
 Signed: *Clarence J. Walton* 5/7/09
 Clarence J. Walton, L.S.
 My Registration Renewal Date is December 31, 2009
 Iowa License Number 11310
 Pages or sheets covered by this seal: 1 of 2 and 2 of 2.



- A. THERE IS NO CERTIFICATE FOR THE CORNER ON FILE WITH THE RECORDER OF THE COUNTY IN WHICH THE CORNER IS LOCATED.
- B. THE CORNER MONUMENT HAS BEEN REPLACED OR MODIFIED.
- C. THE SURVEYOR IN RESPONSIBLE CHARGE OF THE LAND SURVEYING ACCEPTS A CORNER POSITION THAT DIFFERS FROM THAT SHOWN IN THE PUBLIC RECORDS OF THE COUNTY IN WHICH THE CORNER IS LOCATED.
- D. THE REFERENCE TIES REFERRED TO IN AN EXISTING PUBLIC RECORD NO LONGER EXIST.

CORNERS TO BE INDEXED

CORNER	SECTION	TOWNSHIP	RANGE
NE	18	83N	1W
SE	7	83N	1W
SW	8	83N	1W
NW	17	83N	1W
E 1/4	18	83N	1W
W 1/4	17	83N	1W

JONES COUNTY ENGINEER'S OFFICE



19501 HWY. 64, ANAMOSA, IOWA 52205
 (319) 462-3785

PREPARED BY
 CLARENCE J. WALTON, JONES COUNTY ENGINEER'S OFFICE, 19501 HWY. 64, ANAMOSA, IOWA, 52205 (319) 462-3785

UNITED STATES PUBLIC LAND SURVEY CORNER CERTIFICATE

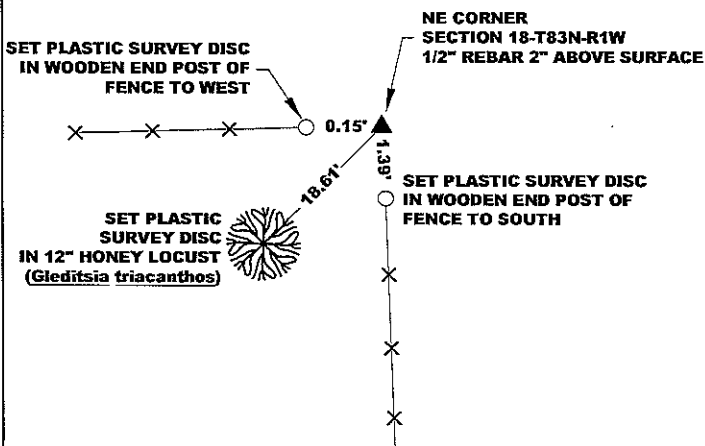
**LAND SURVEY MONUMENTS SITUATED IN SECTION 18, TOWNSHIP 83 NORTH,
 RANGE 1 WEST OF THE 5TH PRINCIPAL MERIDIAN, JONES COUNTY, IOWA.**

OFFICE FILE NO.

CORNER SECTION TOWNSHIP RANGE
 NE 18 T83N R1W

NE CORNER SECTION 18-T83N-R1W
 STATE PLANE COORDINATE
 NAD 83 IOWA NORTH
 N 3474979.25
 E 5601976.45

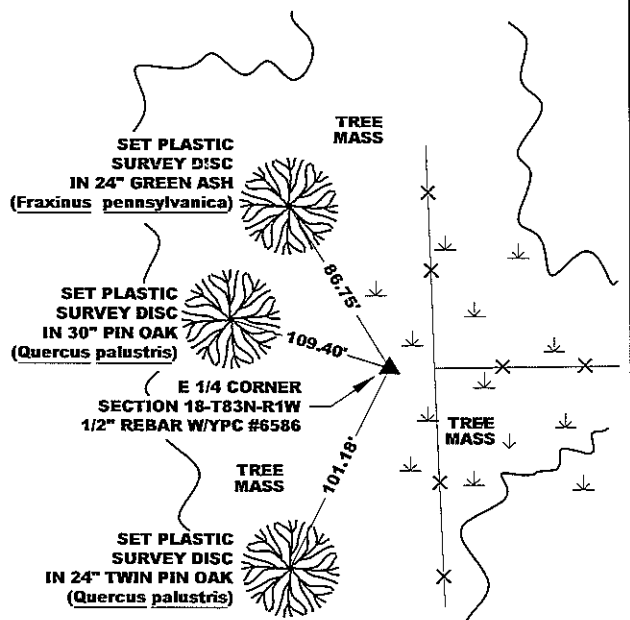
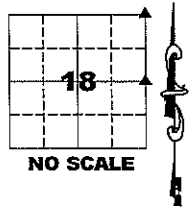
NOTE:
 THE STATE PLANE COORDINATE AS INDICATED IS FOR
 CONVENIENCE ONLY. THE TIES AS SHOWN SHOULD BE
 USED TO REPLACE THE CORNER, IF DESTROYED



CORNER SECTION TOWNSHIP RANGE
 E 1/4 18 T83N R1W

E 1/4 CORNER SECTION 18-T83N-R1W
 STATE PLANE COORDINATE
 NAD 83 IOWA NORTH
 N 3472336.87
 E 5602064.30

NOTE:
 THE STATE PLANE COORDINATE AS INDICATED IS FOR
 CONVENIENCE ONLY. THE TIES AS SHOWN SHOULD BE
 USED TO REPLACE THE CORNER, IF DESTROYED



PAGE 2 of 2

OPC ORANGE PLASTIC CAP
 () RECORDED AS

OPC ORANGE PLASTIC CAP
 () RECORDED AS

FIELD BOOK: MISC. 2009, PAGE 159. DATE OF SURVEY: 4/24/09

FIELD BOOK: MISC. 2009, PAGE 158. DATE OF SURVEY: 4/24/09



I hereby certify that this land surveying document
 and the related survey work was performed by me
 or under my direct personal supervision and that
 I am a duly registered Land Surveyor under the laws
 of the State of Iowa.

Signed: *Clarence J. Walton* 5/7/09
 Clarence J. Walton, L.S.
 My Registration Renewal Date is December 31, 2009
 Iowa License Number 11310
 Pages or sheets covered by this seal: 1 of 2 and 2 of 2.

- A. THERE IS NO CERTIFICATE FOR THE CORNER ON FILE WITH THE RECORDER OF THE COUNTY IN WHICH THE CORNER IS LOCATED.
- B. THE CORNER MONUMENT HAS BEEN REPLACED OR MODIFIED.
- C. THE SURVEYOR IN RESPONSIBLE CHARGE OF THE LAND SURVEYING ACCEPTS A CORNER POSITION THAT DIFFERS FROM THAT SHOWN IN THE PUBLIC RECORDS OF THE COUNTY IN WHICH THE CORNER IS LOCATED.
- D. THE REFERENCE TIES REFERRED TO IN AN EXISTING PUBLIC RECORD NO LONGER EXIST.

CORNERS TO BE INDEXED

CORNER	SECTION	TOWNSHIP	RANGE
NE	18	83N	1W
SE	7	83N	1W
SW	8	83N	1W
NW	17	83N	1W
E 1/4	18	83N	1W
W 1/4	17	83N	1W

JONES COUNTY ENGINEER'S OFFICE

19501 HWY. 64, ANAMOSA, IOWA 52205
 (319) 462-3785

UNITED STATES PUBLIC LAND SURVEY CORNER CERTIFICATE
 OF

Land Survey Monuments situated in Section 18, Township 83 NORTH, Range 1 EAST, of the Fifth Principal Meridian, CLINTON County, Iowa.

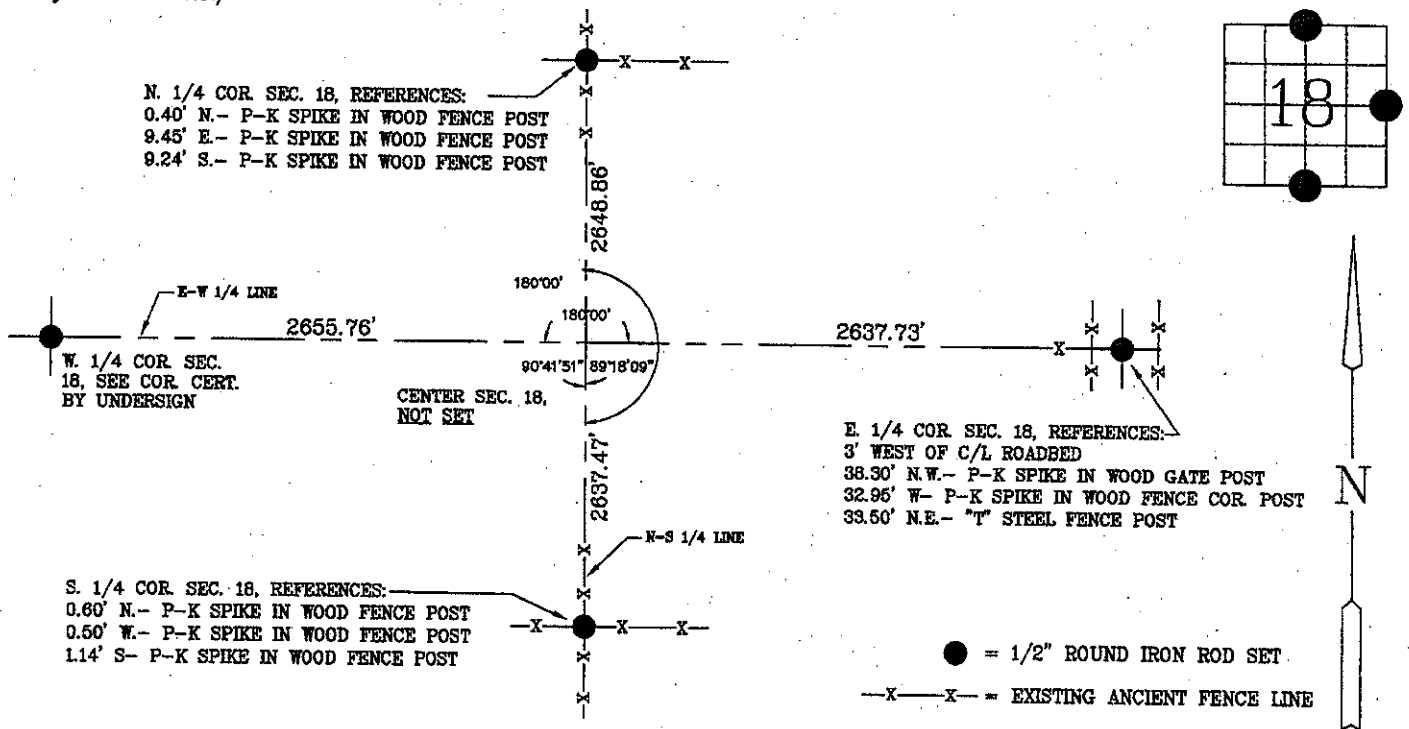
Previously recorded in N/A, Page N/A in County Recorder's Office.

(Show reason for preparing this certificate, the evidence and detailed procedures used in establishing the corner positions and monumentation found or placed.)

Monument Description and Remarks: N. 1/4 COR. SEC. 18, SET 1/2" ROUND IRON ROD STAKE PER EXISTING ANCIENT FENCE LINE N-S-E-W, SEARCH AREA 10'; E. 1/4 COR. SEC. 18, SET 1/2" ROUND IRON ROD STAKE MIDWAY BETWEEN ROAD R-O-W FENCE AND IN LINE WITH ANCIENT FENCE LINE WEST, SEARCH AREA 15'; S. 1/4 COR. SEC. 18, SET 1/2" ROUND IRON ROD STAKE IN LINE WITH ANCIENT FENCE LINE N-S-E-W, SEARCH AREA 10' NO. 04-01-690

PLAN - VIEW

(Show a minimum of three reference ties to durable physical objects, relevant monuments and physical conditions that will enable recovery of the corner.)



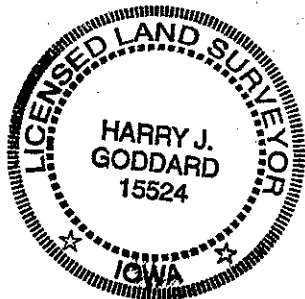
I hereby certify that this land surveying document was prepared and the related survey work was performed by me or under my direct personal supervision and that I am a duly licensed land surveyor under the laws of the State of Iowa.

Harry J. Goddard
 Harry J. Goddard Date Oct 12, 2001

My license is subject to renewal on Dec. 31, 2002
 License No. 15524

List Corners to be Indexed

Corners	Section	Twp	Range
E 1/4 COR.	18	83N	1E
S. 1/4	18	83N	1E
N. 1/4 COR.	18	83N	1E



Only those copies of this page signed in red color and displaying surveyors original

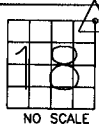
Seal are to be considered certified official copies. (Iowa Admin. Code 193C-1.30)

UNITED STATES PUBLIC LAND SURVEY CORNER CERTIFICATE

LAND SURVEY MONUMENTS SITUATED IN SECTION 18, TOWNSHIP 83
NORTH, RANGE 1 WEST OF THE 5TH P.M., JONES COUNTY, IOWA

980 CORNERS TO BE INDEXED

CORNER SECTION TOWNSHIP RANGE
NORTHEAST 18 83N 1W
OFFICE FILE NO.

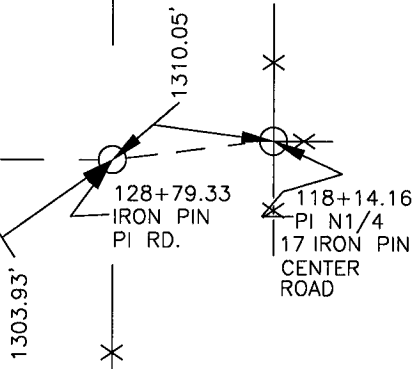


83118e_031601

NO CERTIFICATION ON THIS CORNER.

NE COR. SEC. 18, FD. NO STONE

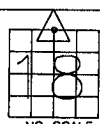
COUNTY SURVEY CREW POWELL-WOOD 11-16-84
BK. NO. 293, #3, P-24



PREVIOUSLY RECORDED IN BOOK N/A, PAGE N/A
MONUMENT DESCRIPTION AND HOW ESTABLISHED SEARCHED AROUND FENCE CORNER. FOUND NO EVIDENCE OF STONE TIED WITH DISTANCES TO ROAD PIs, NORTHEAST CORNER OF SECTION 18, TOWNSHIP 83 NORTH, RANGE 1 WEST, JONES COUNTY, IOWA

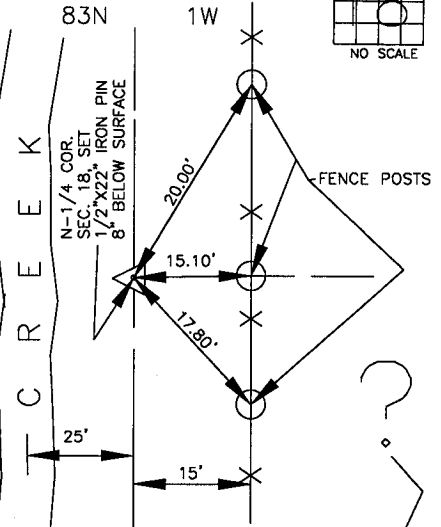
983 CORNERS TO BE INDEXED

CORNER SECTION TOWNSHIP RANGE
N1/4 18 83N 1W
OFFICE FILE NO.



83118c_032701

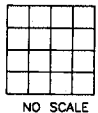
COUNTY CREW POSTEL-POWELL 6-78 BK. 276, P-2
(NO CERTIFICATION) (ON THIS CORNER)



PREVIOUSLY RECORDED IN BOOK N/A, PAGE N/A
MONUMENT DESCRIPTION AND HOW ESTABLISHED AFTER PROJECTING 1/4 SEC. LINE SOUTH THROUGH SEC. 7 & PROJECTING 1/4 SEC. LINE NORTH THROUGH SEC. 18 & SEEING THAT THEY WERE VERY CLOSE TO TO INTERSECTING AT N1/4 COR. SEC. 18, WE WENT EAST TO N.E. COR. SEC. 18 & PROJECTED SEC. LINE BACK WEST & INTERSECTED NORTH-SOUTH 1/4

CORNERS TO BE INDEXED

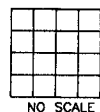
CORNER SECTION TOWNSHIP RANGE
OFFICE FILE NO.



PREVIOUSLY RECORDED IN BOOK _____, PAGE _____
MONUMENT DESCRIPTION AND HOW ESTABLISHED _____

CORNERS TO BE INDEXED

CORNER SECTION TOWNSHIP RANGE
OFFICE FILE NO.



PREVIOUSLY RECORDED IN BOOK _____, PAGE _____
MONUMENT DESCRIPTION AND HOW ESTABLISHED _____

~~I hereby declare that this plat, survey or report was made by me or under my direct personal supervision and that I am a duly registered Land Surveyor under the laws of the State of Iowa.~~

Signed: _____

Joseph D. Tjepkes L.S. Iowa Reg. No. 14807
My Registration Renewal Date is December 31, 2002

SEAL

JONES COUNTY ENGINEER'S OFFICE

19501 HWY. 64,
ANAMOSA, IOWA,
52205 (319)462-3785