

COPY

FEE BOOK: 2010 0152 1/15/2010 11:59 AM

REC FEES: \$9.00

PAGES: 1

Marie Krutzfield, Recorder
Jones County, Iowa

PREPARED BY: MATTHEW W. KRAUSE, MARTIN & WHITACRE SURVEYORS & ENGINEERS,
P.O. BOX 413, MUSCATINE, IOWA 52761 / PHONE: 563-263-7691

UNITED STATES PUBLIC LAND SURVEY CORNER CERTIFICATE OF

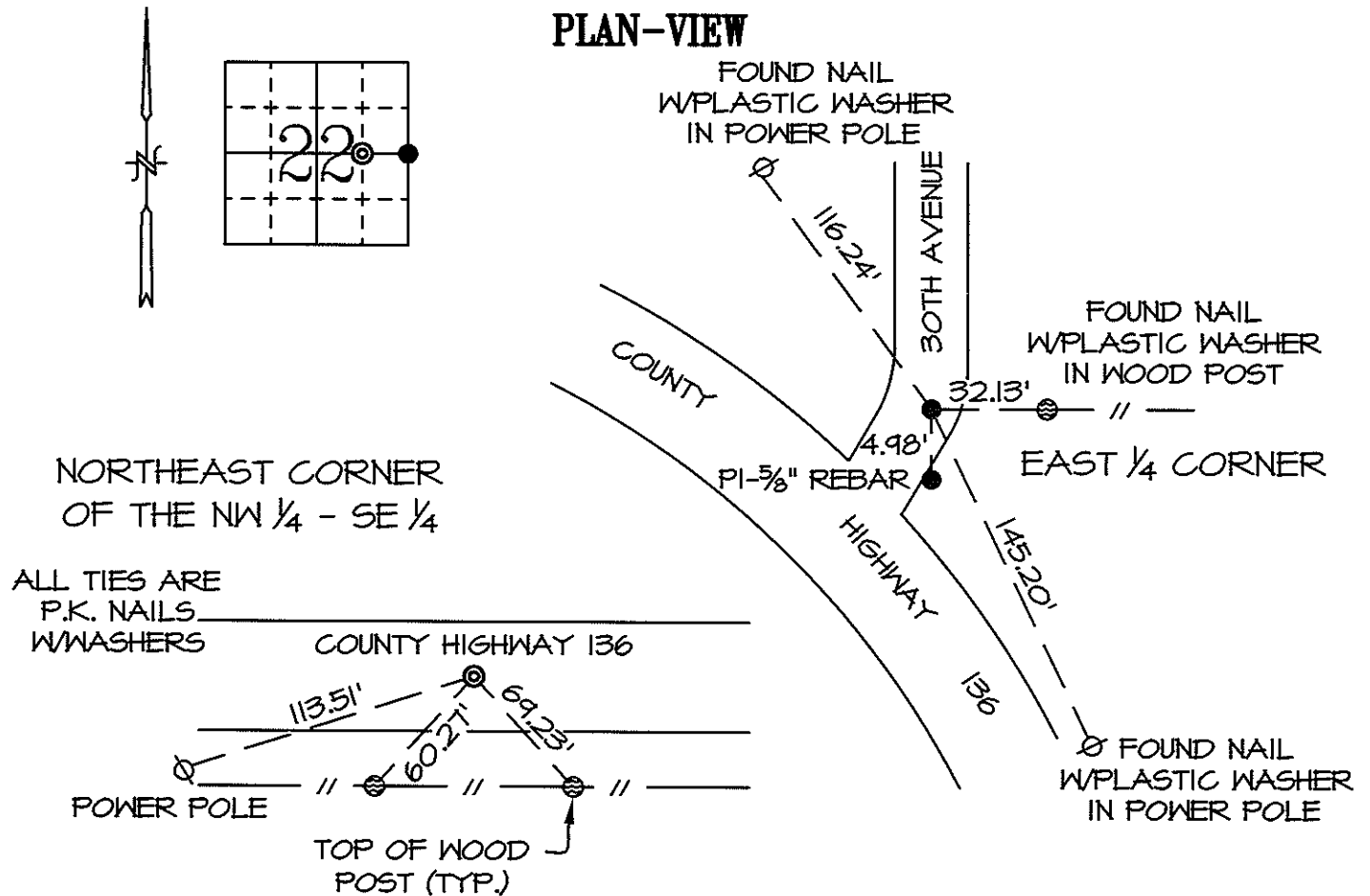
Land Survey Monuments situated in Section 22, Township T83N, Range RIW, of the Fifth Principal Meridian, JONES County, Iowa.

Reason for preparing certificate: -No Certificate on File -Monument Type Replaced/Differs
 -Existing Ties Inaccurate -Differing Position Accepted

Previously recorded in EAST 1/4 FILE #9798-3971 in County Recorder's Office.

Monument Description and Remarks: EAST 1/4 CORNER - FOUND 5/8" REBAR, 6"± DEEP.

NORTHEAST CORNER OF THE NW 1/4 - SE 1/4 - SET MAGNETIC P.K. NAIL 2.8' NORTH OF THE CENTERLINE OF COUNTY HIGHWAY 136 AT THE INTERSECTION OF A LINE BETWEEN THE CENTER AND THE EAST 1/4 CORNER, AND AN ANCIENT FENCE LINE OF OCCUPATION FROM THE SOUTH.



Drawn By: RS Date: 01/06/10 M&W: Book JONES Page 77 & 78 Job No. 7180.09

I hereby certify that the survey work was completed and this certificate was prepared by me or under my direct personal supervision and that I am a duly licensed land surveyor under the laws of the state of Iowa.

Signature: Matthew W. Krause

Date: JAN 9, 2010 License No. LS15981
My License Expires 12/31/2011.



List Corners to be Indexed			
Corners	Section	Twp	Range
E 1/4	22	T83N	RIW
NE NW 1/4 - SE 1/4	22	T83N	RIW