

COPY

FEE BOOK: 2010 0152 1/15/2010 11:59 AM

REC FEES: \$9.00

PAGES: 1

Marie Krutzfield, Recorder
Jones County, Iowa

PREPARED BY: MATTHEW W. KRAUSE, MARTIN & WHITACRE SURVEYORS & ENGINEERS,
P.O. BOX 413, MUSCATINE, IOWA 52761 / PHONE: 563-263-7691

UNITED STATES PUBLIC LAND SURVEY CORNER CERTIFICATE OF

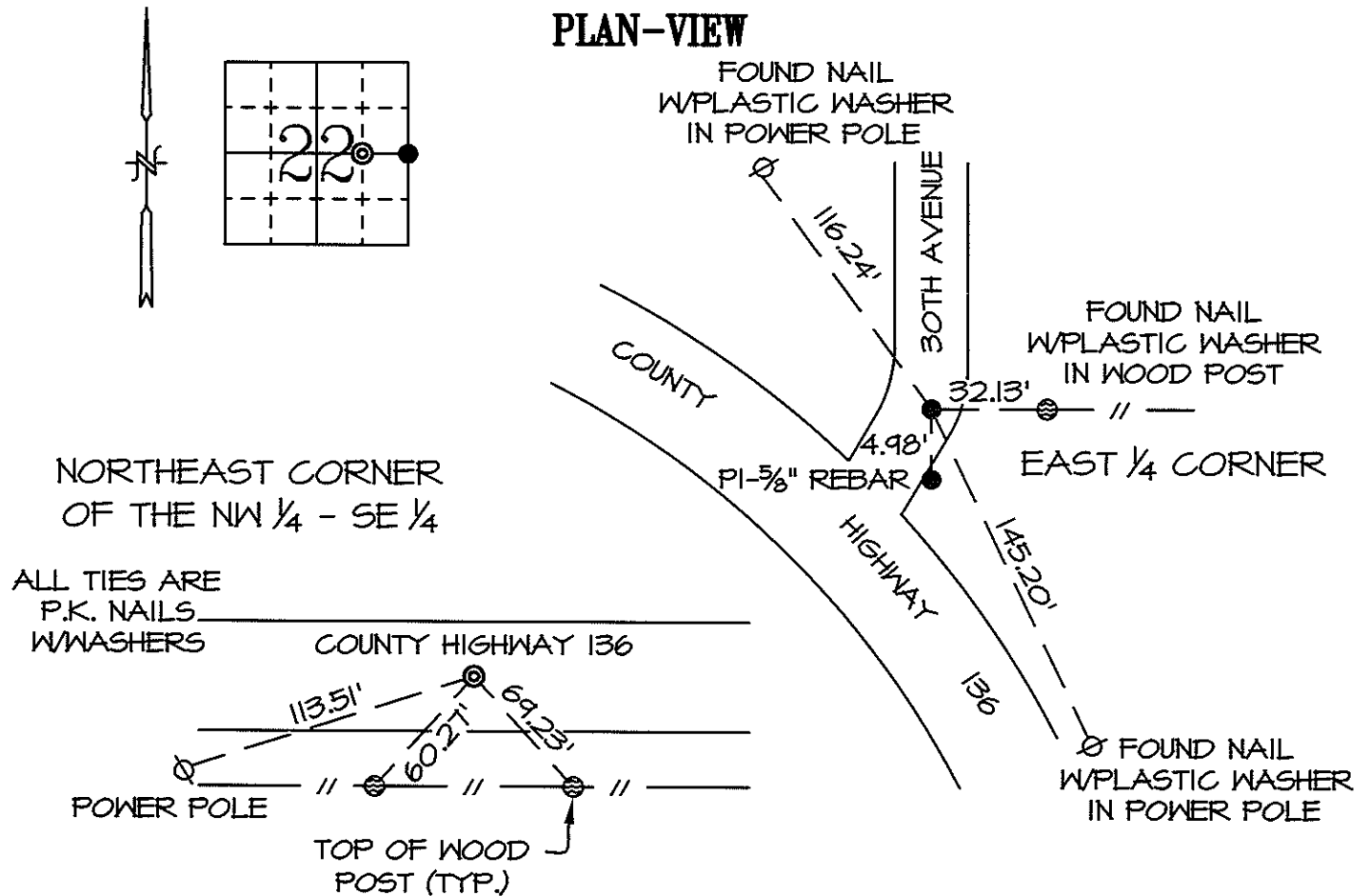
Land Survey Monuments situated in Section 22, Township T83N, Range RIW, of the Fifth Principal Meridian, JONES County, Iowa.

Reason for preparing certificate: -No Certificate on File -Monument Type Replaced/Differs
 -Existing Ties Inaccurate -Differing Position Accepted

Previously recorded in EAST 1/4 FILE #9798-3971 in County Recorder's Office.

Monument Description and Remarks: EAST 1/4 CORNER - FOUND 5/8" REBAR, 6"± DEEP.

NORTHEAST CORNER OF THE NW 1/4 - SE 1/4 - SET MAGNETIC P.K. NAIL 2.8' NORTH OF THE CENTERLINE OF COUNTY HIGHWAY 136 AT THE INTERSECTION OF A LINE BETWEEN THE CENTER AND THE EAST 1/4 CORNER, AND AN ANCIENT FENCE LINE OF OCCUPATION FROM THE SOUTH.



Drawn By: RS Date: 01/06/10 M&W: Book JONES Page 77 & 78 Job No. 7180.09

I hereby certify that the survey work was completed and this certificate was prepared by me or under my direct personal supervision and that I am a duly licensed land surveyor under the laws of the state of Iowa.

Signature: Matthew W. Krause

Date: JAN 9, 2010 License No. LS15981
My License Expires 12/31/2011.



List Corners to be Indexed			
Corners	Section	Twp	Range
E 1/4	22	T83N	RIW
NE NW 1/4 - SE 1/4	22	T83N	RIW

2003 0954

FILED
RECORDERS OFFICE
JONES COUNTY IOWA

03 MAR -6 AM 10:28

MARIE KRUTZFIELD
RECORDER NO FEE

J.D. TJEPKES, LS. JONES COUNTY ENGINEER'S OFFICE, 19501 HWY. 64, ANAMOSA, IOWA, 52205 (319)462-3785

UNITED STATES PUBLIC LAND SURVEY CORNER CERTIFICATE

LAND SURVEY MONUMENTS SITUATED IN SECTION 22, TOWNSHIP 83
NORTH, RANGE 1 WEST OF THE 5TH P.M., JONES COUNTY, IOWA

CORNERS TO BE INDEXED

CORNER SECTION TOWNSHIP RANGE
E1/4 22 83N 1W

OFFICE FILE NO.

83122o_030403.jpg

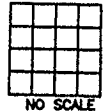


NO SCALE

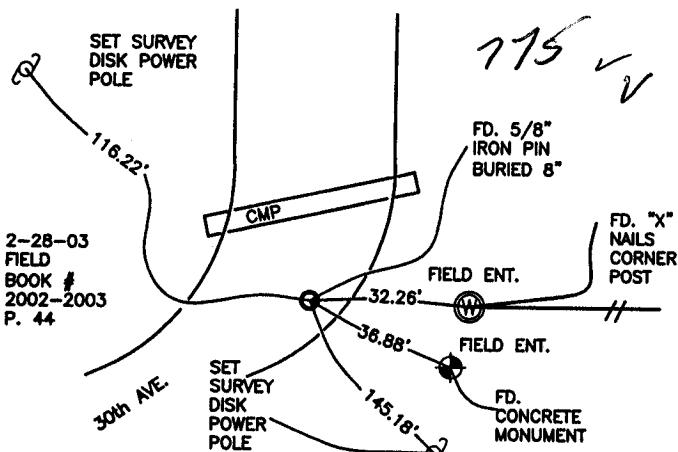
CORNERS TO BE INDEXED

CORNER SECTION TOWNSHIP RANGE

OFFICE FILE NO.



NO SCALE



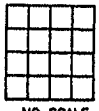
PREVIOUSLY RECORDED IN BOOK NA, PAGE NA
MONUMENT DESCRIPTION AND HOW ESTABLISHED
FOUND "X" NAILS PER LS 6581 (DILLON) DATED 1994, RECORDED AT JONES
COUNTY ENGINEER'S OFFICE. FOUND 5/8" IRON PIN BURIED 8" IN EAST
SHOULDER OF 30th AVE.
RETIED AS INDICATED. E1/4 SECTION 22 T83N R1W.

PREVIOUSLY RECORDED IN BOOK _____, PAGE _____
MONUMENT DESCRIPTION AND HOW ESTABLISHED _____

CORNERS TO BE INDEXED

CORNER SECTION TOWNSHIP RANGE

OFFICE FILE NO.

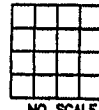


NO SCALE

CORNERS TO BE INDEXED

CORNER SECTION TOWNSHIP RANGE

OFFICE FILE NO.



NO SCALE

PREVIOUSLY RECORDED IN BOOK _____, PAGE _____
MONUMENT DESCRIPTION AND HOW ESTABLISHED _____

PREVIOUSLY RECORDED IN BOOK _____, PAGE _____
MONUMENT DESCRIPTION AND HOW ESTABLISHED _____

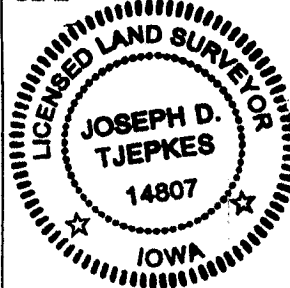
I hereby declare that this plat, survey or report was made by me or under my direct personal supervision and that I am a duly registered Land Surveyor under the laws of the State of Iowa.

Signed:

Joseph D. Tjepkes 3-4-03

Joseph D. Tjepkes L.S. Iowa Reg. No. 14807
My Registration Renewal Date is December 31, 2002

SEAL



J.D. TJEPKES LS 14807
JONES COUNTY
ENGINEER'S OFFICE

19501 HWY. 64,
ANAMOSA, IOWA,
52205 (319)462-3785

5

1999 3213

FILED
RECORDERS OFFICE
JONES COUNTY IOWA

99 SEP -8 AM 10:53

MARIE KRUTZFIELD
RECORDER 6.00 Pd

PREPARED BY HALL & HALL ENGINEERS, INC. 200 28TH STREET N.E. CEDAR RAPIDS, IOWA 52402 (319) 382-8848

SECTION CORNER CERTIFICATE

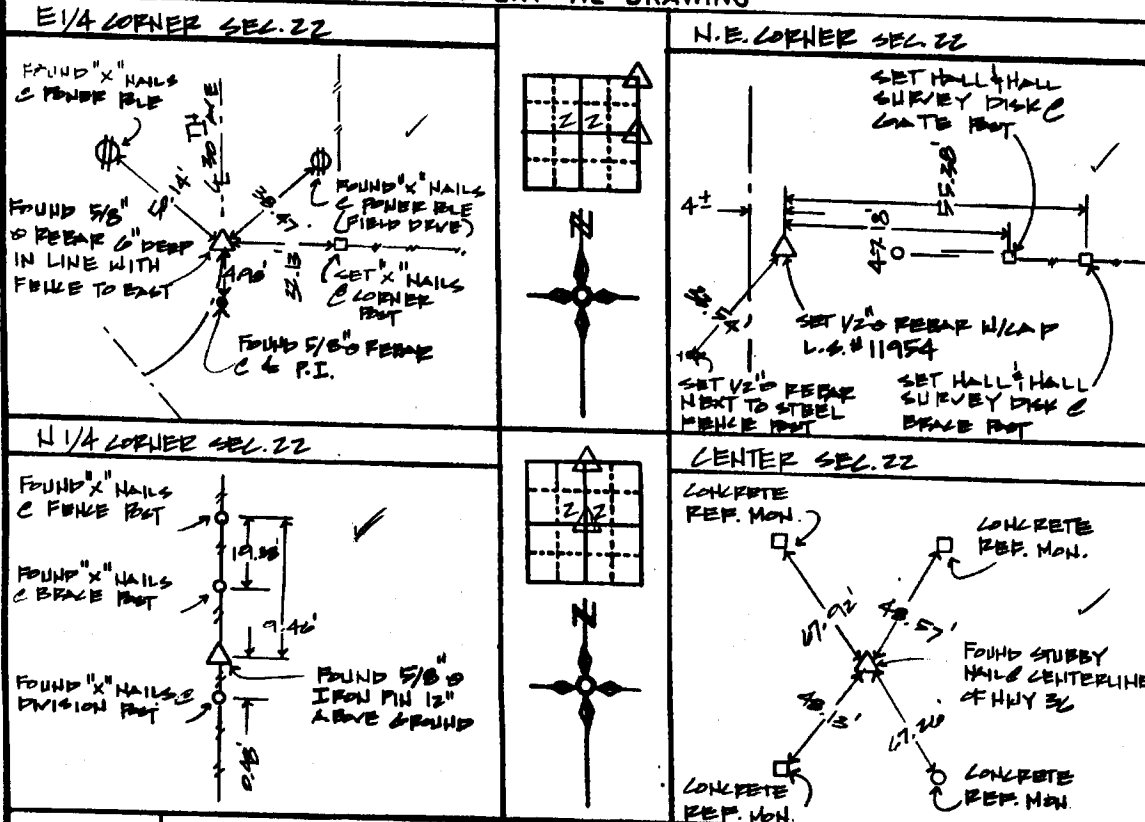
OF
LAND SURVEY MONUMENTS SITUATED IN SECTION 22, TOWNSHIP 83 NORTH,
RANGE 1 WEST, OF THE FIFTH PRINCIPAL MERIDIAN, JONES COUNTY, IOWA.

PREVIOUSLY RECORDED IN BOOK _____ AT PAGE _____

MONUMENT DESCRIPTION AND REMARKS:

E 1/4 OF SECTION 22, FOUND 5/8" REBAR
N.E. CORNER OF SECTION 22, SET 1/2" REBAR W/ CAP L.S.# 11954
N 1/4 CORNER OF SECTION 22, FOUND 5/8" IRON PIN 12" ABOVE GROUND
CENTER OF SECTION 22, FOUND STUBBY NAIL & CENTERLINE OF HWY 36

RECOVERY TIE DRAWING



I hereby certify that this land surveying document was prepared and the related survey work was performed by me or under my direct personal supervision and that I am a duly Licensed Land Surveyor under the laws of the State of Iowa.

Signed: Daniel J. Johnson Date: 9-8-99
Daniel J. Johnson, L.S. 11984
My license renewed July 6, December 31, 2000

Pages or sheets covered by this book (Entire submission unless specified here)

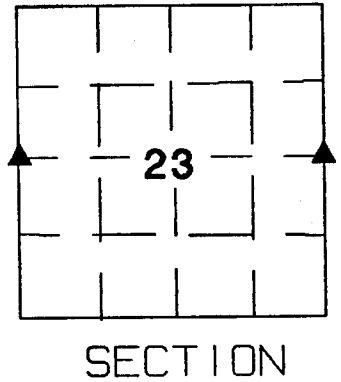
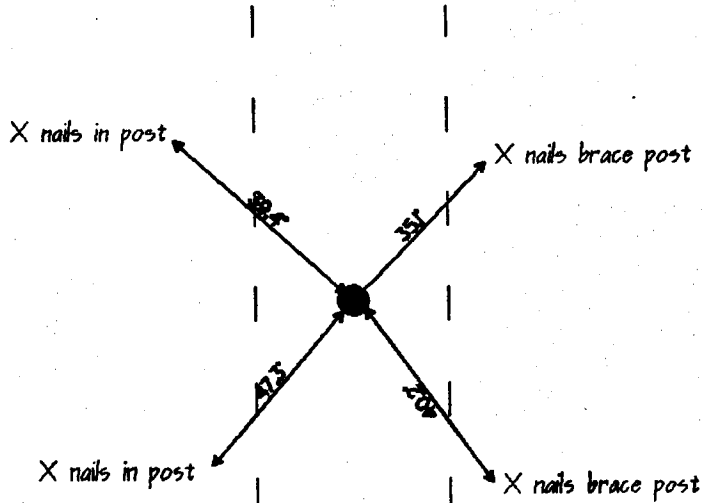
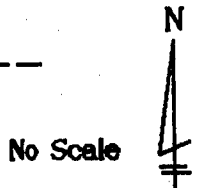
REASON FOR PREPARING CERTIFICATE:

- A) THERE IS NO CERTIFICATE FOR THE CORNER ON FILE WITH THE RECORDER OF THE COUNTY IN WHICH THE CORNER IS LOCATED
- B) CORNER POSITION DIFFERS FROM THAT SHOWN IN THE PUBLIC RECORDS OF THE COUNTY IN WHICH THE CORNER IS LOCATED
- C) THE CORNER MONUMENT HAS BEEN REPLACED OR MODIFIED
- D) THE REFERENCE TIES REFERRED TO IN AN EXISTING PUBLIC RECORD ARE INCORRECT

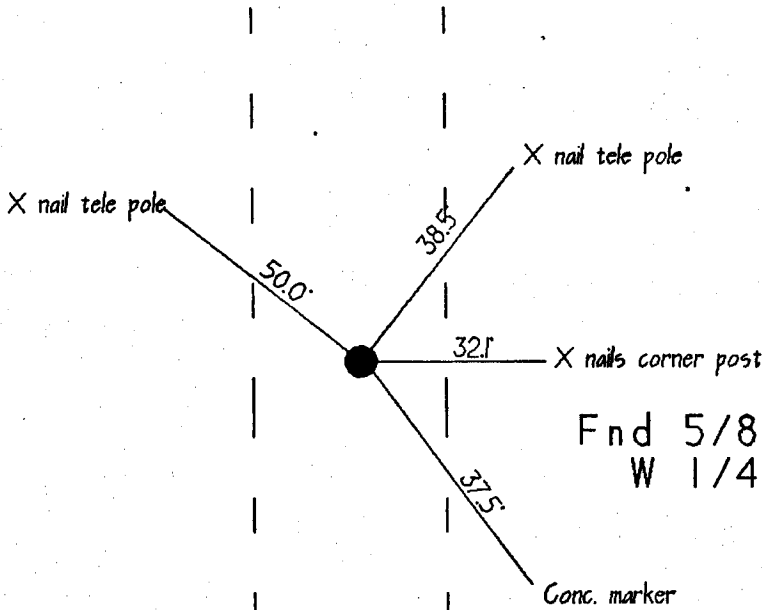
1/4 SECTION CORNER 1/2" 1/2" W/ L.S. CAP SET --- EXISTING FENCE LINE --- PROPERTY LINE	SHEET NO. <u>1</u> OF <u>1</u>	US PUBLIC LAND SURVEY RECORD PLAT NO. <u>JONES COUNTY ACQUISITION PLAT</u>	HALL AND HALL ENGINEERS, INC. 200 28TH STREET N.E. CEDAR RAPIDS, IOWA 52402 (319) 382-8848
	T.M.R.	D.U.D.	D.U.D.

United States Public Land Survey Corner Certificate

Land survey corner in Section 23 Township 83
North, Range 1 West of the 5th Principal Meridian
Jones County, Iowa.



Fnd 5/8" Iron rod 6" deep
E 1/4 Cor Sec 23-83-1



Fnd 5/8" Iron rod 8" deep
W 1/4 Cor Sec 23-83-1

E 1/4 Cor. Sec. 22

Certification

I hereby certify that this plot and survey was made by me or under my direct supervision and that I am a duly Registered Land Surveyor under the laws of the State of Iowa.

Harold E. Dillon 5/7/94
Harold E. Dillon Reg.#6581 date

