

1999 3213

FILED  
RECORDERS OFFICE  
JONES COUNTY IOWA

99 SEP -8 AM 10:53

MARIE KRUTZFIELD  
RECORDER 6.00 Pd

PREPARED BY HALL & HALL ENGINEERS, INC. 200 28TH STREET N.E. CEDAR RAPIDS, IOWA 52402 (319) 382-8848

SECTION CORNER CERTIFICATE

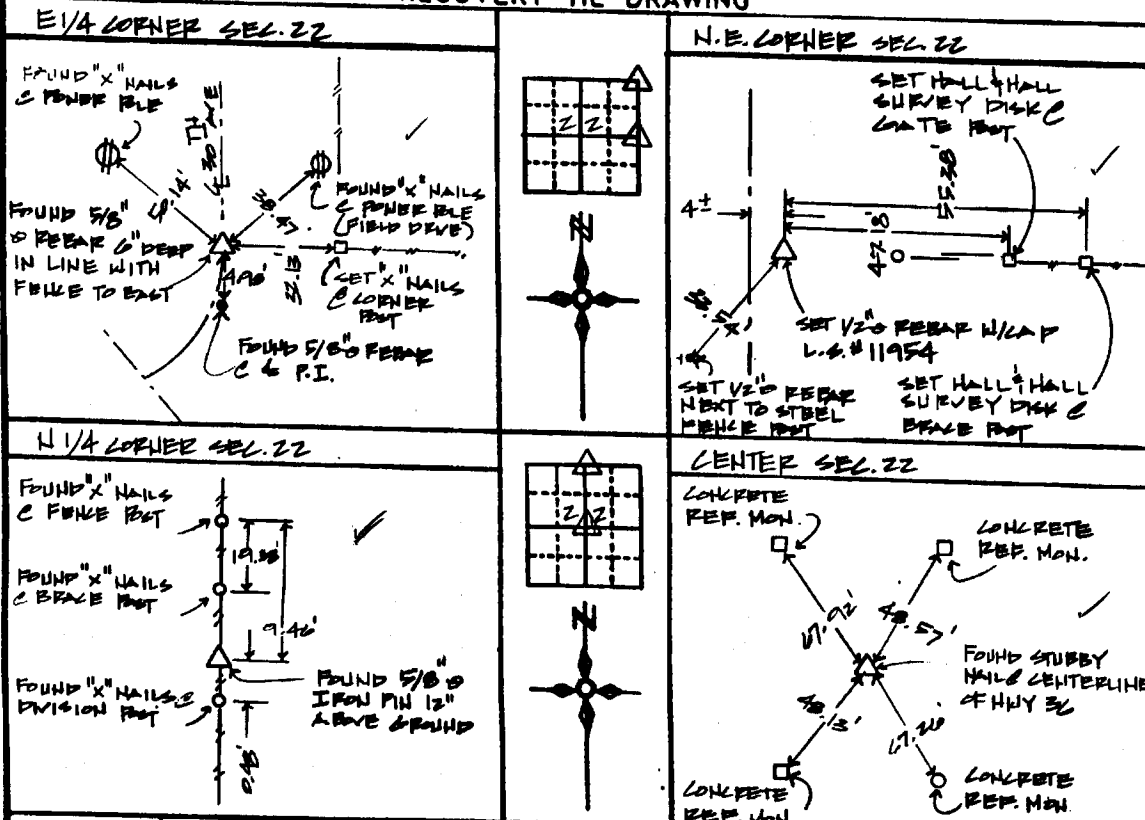
OF  
LAND SURVEY MONUMENTS SITUATED IN SECTION 22, TOWNSHIP 83 NORTH,  
RANGE 1 WEST, OF THE FIFTH PRINCIPAL MERIDIAN, JONES COUNTY, IOWA.

PREVIOUSLY RECORDED IN BOOK \_\_\_\_\_ AT PAGE \_\_\_\_\_

MONUMENT DESCRIPTION AND REMARKS:

E 1/4 OF SECTION 22, FOUND 5/8" REBAR  
N.E. CORNER OF SECTION 22, SET 1/2" REBAR W/ CAP L.S.# 11954  
N 1/4 CORNER OF SECTION 22, FOUND 5/8" IRON PIN 12" ABOVE GROUND  
CENTER OF SECTION 22, FOUND STUBBY NAIL & CENTERLINE OF HWY 36

RECOVERY TIE DRAWING



I hereby certify that this land surveying document was prepared and the related survey work was performed by me or under my direct personal supervision and that I am a duly Licensed Land Surveyor under the laws of the State of Iowa.  
Signed: Daniel J. Johnson Date: 9-8-99  
Daniel J. Johnson, L.S. 11984  
My license renewed July 6, December 31, 2000  
Pages or sheets covered by this book (Entire submission unless specified here)

- REASON FOR PREPARING CERTIFICATE:
- A) THERE IS NO CERTIFICATE FOR THE CORNER ON FILE WITH THE RECORDER OF THE COUNTY IN WHICH THE CORNER IS LOCATED
  - B) CORNER POSITION DIFFERS FROM THAT SHOWN IN THE PUBLIC RECORDS OF THE COUNTY IN WHICH THE CORNER IS LOCATED
  - C) THE CORNER MONUMENT HAS BEEN REPLACED OR MODIFIED
  - D) THE REFERENCE TIES REFERRED TO IN AN EXISTING PUBLIC RECORD ARE INCORRECT

1/4 SECTION CORNER 1/4 SECTION CORNER FOUND 1/2" 1/2" W/ L.S. CAP SET --- EXISTING FENCE LINE --- PROPERTY LINE	SHEET NO. <u>1</u> OF <u>1</u>	US PUBLIC LAND SURVEY RECORD PLAT NO. <u>JONES COUNTY ACQUISITION PLAT</u>	HALL AND HALL ENGINEERS, INC. 200 28TH STREET N.E. CEDAR RAPIDS, IOWA 52402 (319) 382-8848
	T.M.R. B.D.U. B.D.U. 12/24/98 H.T.S.	COUNTY NO. <u>3</u> PAGE NO. <u>6373</u>	