

2004 1109

FILED
RECORDERS OFFICE
JONES COUNTY IOWA

04 APR -2 AM 9:11

MARIE KRUTZFIELD
RECORDER 11.00 Pd

PREPARED BY:
Landmark 511 South 4th Street
Clinton, IA 52732
ENGINEERING GROUP, INC. (563) 243-1398

SLSI 9-90

UNITED STATES PUBLIC LAND SURVEY CORNER CERTIFICATE
OF

Land Survey Monuments situated in Section 13, Township 83 NORTH, Range 1 WEST, of the Fifth Principal Meridian, JONES County, Iowa.

Previously recorded in N/A, Page N/A in County Recorder's Office.

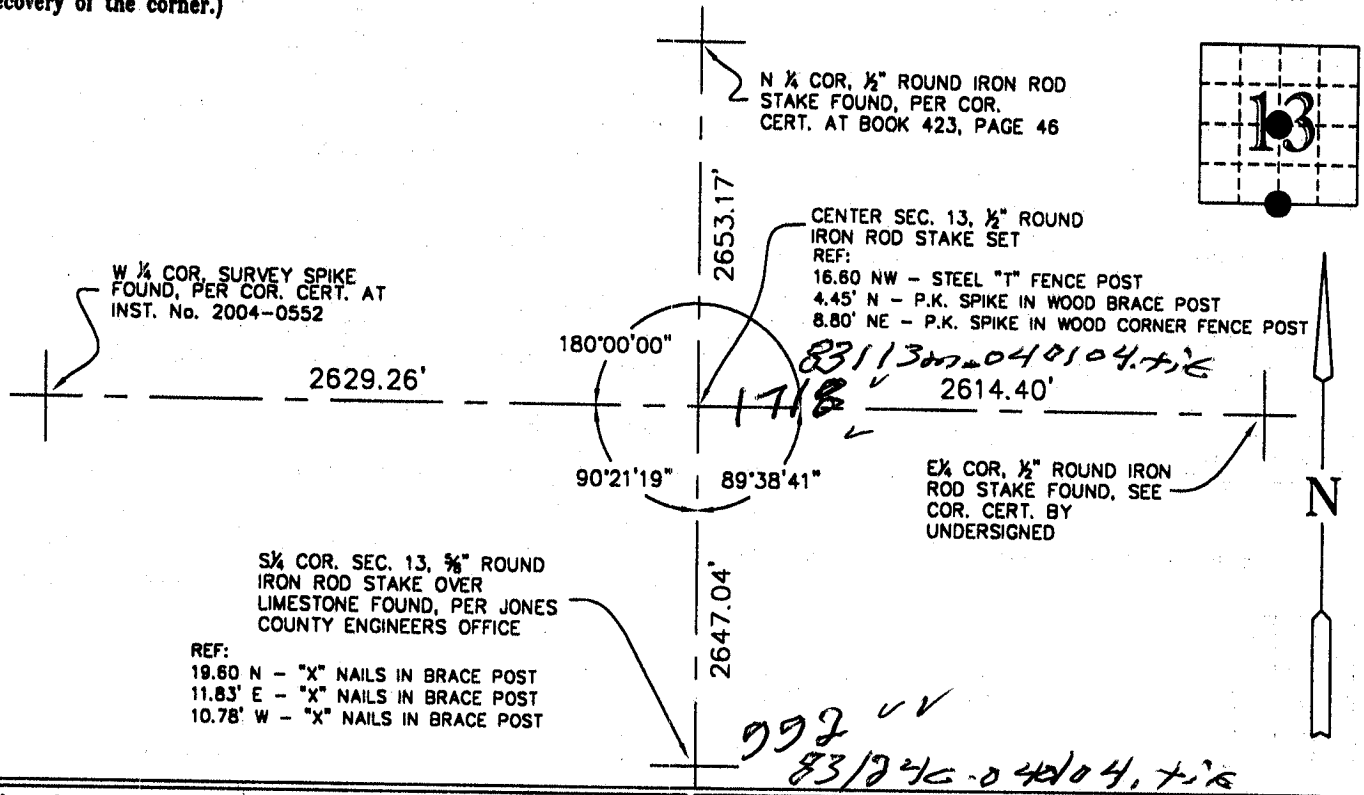
(Show reason for preparing this certificate, the evidence and detailed procedures used in establishing the corner positions and monumentation found or placed.)

Monument Description and Remarks: S 1/4 COR, 5/8" ROUND IRON ROD STAKE FOUND PER JONES COUNTY ENGINEERS OFFICE; CENTER SEC. 13, 1/2" ROUND IRON ROD STAKE SET AT THE INTERSECTION OF THE NORTH-SOUTH QUARTER LINE AND THE EAST-WEST QUARTER LINE; SEARCH AREA 20'

04-04-126

PLAN - VIEW

(Show a minimum of three reference ties to durable physical objects, relevant monuments and physical conditions that will enable recovery of the corner.)



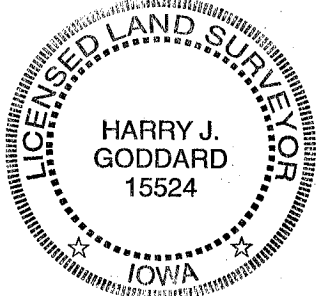
I hereby certify that this land surveying document was prepared and the related survey work was performed by me or under my direct personal supervision and that I am a duly licensed land surveyor under the laws of the State of Iowa.

Harry J. Goddard
Harry J. Goddard Date April 1, 2004

My license is subject to renewal on Dec. 31, 2004
License No. 15524

List Corners to be Indexed

Corners	Section	Twp	Range
S 1/4	13	83N	1 W
CENTER	13	83N	1 W



Only those copies of this page signed in red color and displaying surveyors original

Seal are to be considered certified official copies. (Iowa Admin. Code 193C-1.30)

2

UNITED STATES PUBLIC LAND SURVEY CORNER CERTIFICATE

LAND SURVEY MONUMENTS SITUATED IN SECTION 24, TOWNSHIP 83
NORTH, RANGE 1 WEST OF THE 5TH P.M., JONES COUNTY, IOWA

CORNERS TO BE INDEXED

CORNER	SECTION	TOWNSHIP	RANGE
N-1/4	24	83N	1W

OFFICE FILE NO. 83124c_061401

FD. 12"x9"x4" LIMESTONE,
SET 5/8"x24" ABOVE,
N-1/4 COR. SEC. 24
T83N, R1W

POWELL-STONEKING-HAUGHIE
5-13-93

PREVIOUSLY RECORDED IN BOOK N/A, PAGE N/A
MONUMENT DESCRIPTION AND HOW ESTABLISHED FOUND
12"x9"x4" LIMESTONE AT INTERSECTION OF FENCES. SET
5/8"x24" REBAR ABOVE STONE. SET REFERENCE POINTS
AND TIED OUT AS INDICATED. N-1/4 COR. SECTION 24,
TOWNSHIP 83 NORTH, RANGE 1 WEST, JONES COUNTY, IOWA

CORNERS TO BE INDEXED

CORNER	SECTION	TOWNSHIP	RANGE

OFFICE FILE NO. _____

PREVIOUSLY RECORDED IN BOOK _____, PAGE _____
MONUMENT DESCRIPTION AND HOW ESTABLISHED _____

CORNERS TO BE INDEXED

CORNER	SECTION	TOWNSHIP	RANGE

OFFICE FILE NO. _____

PREVIOUSLY RECORDED IN BOOK _____, PAGE _____
MONUMENT DESCRIPTION AND HOW ESTABLISHED _____

CORNERS TO BE INDEXED

CORNER	SECTION	TOWNSHIP	RANGE

OFFICE FILE NO. _____

PREVIOUSLY RECORDED IN BOOK _____, PAGE _____
MONUMENT DESCRIPTION AND HOW ESTABLISHED _____

~~I hereby declare that this plat, survey or report was made by me or under my direct personal supervision and that I am a duly registered Land Surveyor under the laws of the State of Iowa.~~

Signed: _____

Joseph D. Tjepkes L.S. Iowa Reg. No. 14807
My Registration Renewal Date is December 31, 2002

SEAL

JONES COUNTY
ENGINEER'S OFFICE

19501 HWY. 64,
ANAMOSA, IOWA,
52205 (319)462-3785