

2001 0115
 FILED
 RECORDERS OFFICE
 JONES COUNTY IOWA

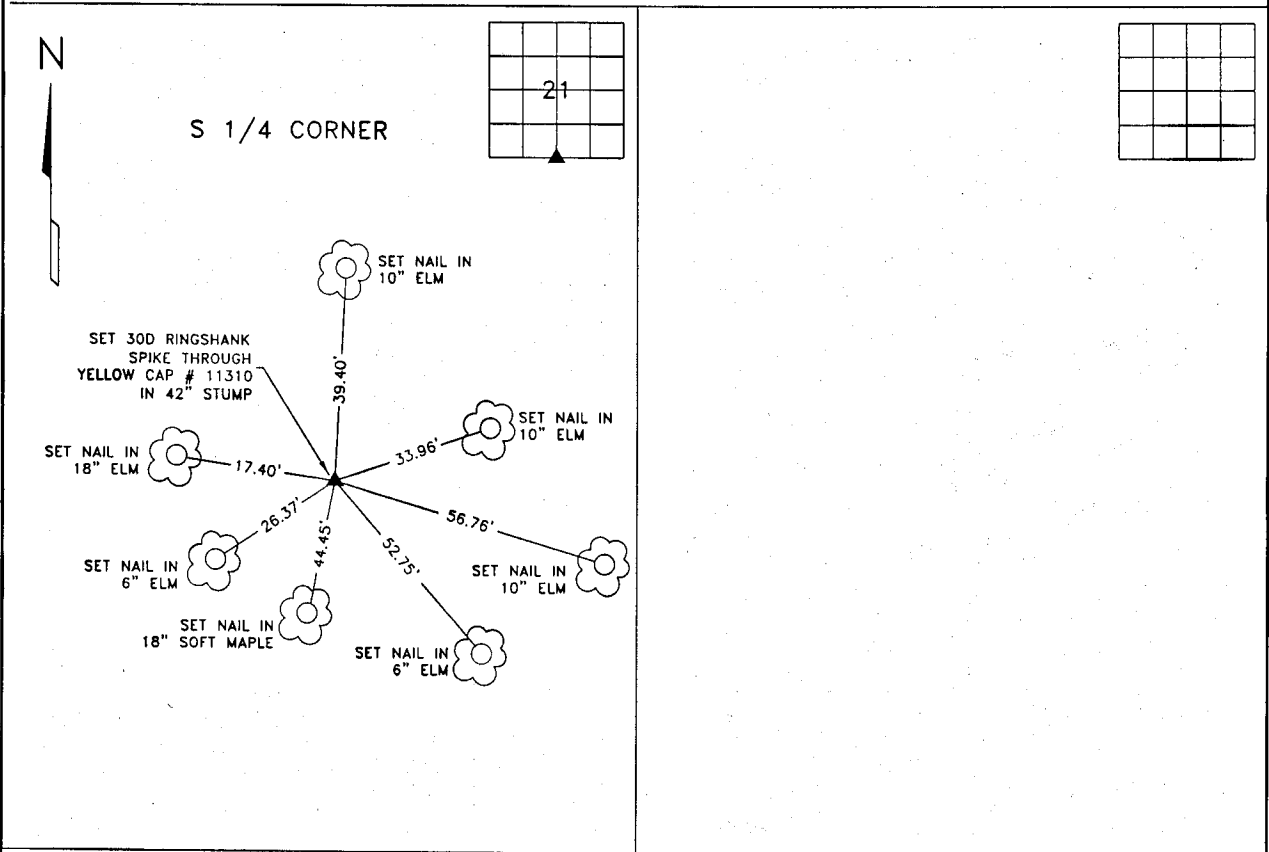
01 JAN 11 PM 3:33

MARIE KRUTZFIELD
 RECORDER 6:00 pm

CLARENCE J. WALTON, LS # 11310, WALTON LAND SURVEYING, P.C., 2213 LAUREN DR. SW, CEDAR RAPIDS, IOWA 52404, (319) 363-4271

UNITED STATES PUBLIC LAND
 SURVEY CORNER CERTIFICATE

LAND SURVEY MONUMENTS SITUATED IN SECTION 21, TOWNSHIP 83 NORTH, RANGE 1 WEST
 OF THE 5TH PRINCIPAL MERIDIAN, JONES COUNTY, IOWA



MONUMENT DESCRIPTION AND REMARKS
 SET 30D RINGSHANK SPIKE IN 42" STUMP USING MEANDER LINE NOTES
 PER ORIGINAL SURVEY NOTES IN JONES COUNTY ENGINEERING DEPARTMENT
 OFFICE.

MONUMENT DESCRIPTION AND REMARKS

NOTE: ALL MEASUREMENTS IN FEET AND DECIMALS THEREOF.

| | | | | |
|--|--|-----------------------|---------------|------------|
| | I hereby certify that this land surveying document and the related survey work was performed by me or under my direct personal supervision and that I am a duly licensed Land Surveyor under the laws of the State of Iowa. Signed _____ Date _____ | CORNERS TO BE INDEXED | | |
| | Clarence J. Walton, L.S. My License Renewal Date is December 31, 2001 License Number 11310 Pages or sheets covered by this seal: 1 of 1 | CORNERS S 1/4 | SECTION 21 | TWP 83N |

| | | | | |
|-------------------------|---|---|---------------|----------------|
| PROJECT No: 10060-4B | Title: UNITED STATES PUBLIC LAND SURVEY CORNER CERTIFICATE | WALTON LAND SURVEYING, P.C. 2213 LAUREN DRIVE SW CEDAR RAPIDS, IOWA 52404 (319) 363-4271 | Drawn: CJW | Book: 1 |
| | | | 11/9/00 | Scale: NONE |