

Instrument #: 2017-1864
 07/14/2017 10:07:15 AM Total Pages: 1
 ZSC SECTION CORNER CERTIFICATE
 Recording Fee: \$7.00 Transfer Tax: \$0
 Sheri L. Jones, Recorder, Jones County Iowa



PREPARED BY

STEPHEN MICHAEL BRAIN, BRAIN ENGINEERING, INC., 1540 MIDLAND COURT NE, CEDAR RAPIDS, IOWA PH. (319) 294-9424

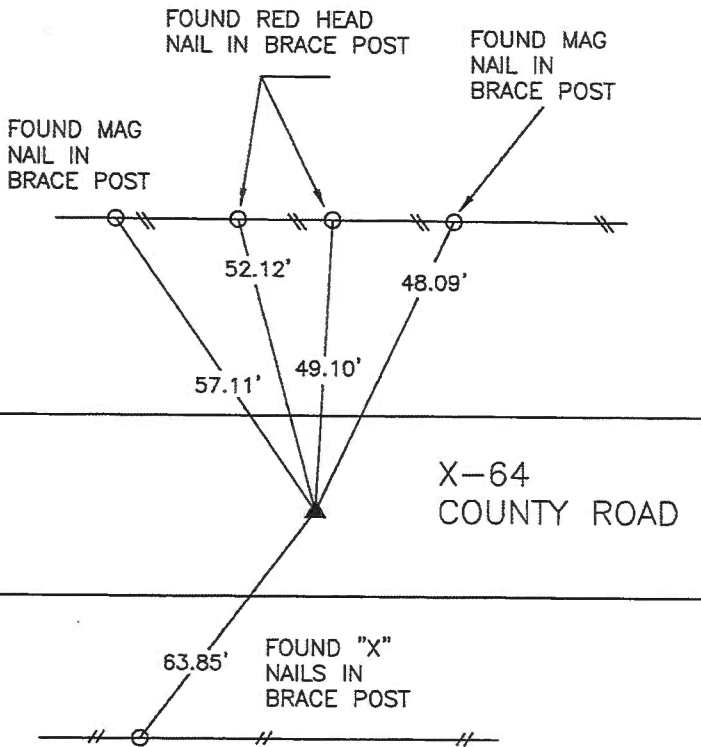
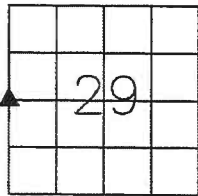
UNITED STATES PUBLIC LAND SURVEY CORNER CERTIFICATE

LAND SURVEY MONUMENTS SITUATED IN SECTION 29, TOWNSHIP 83 NORTH
 RANGE 1 WEST OF THE 5TH P.M., JONES COUNTY, IOWA.

NO SCALE



W 1/4 CORNER



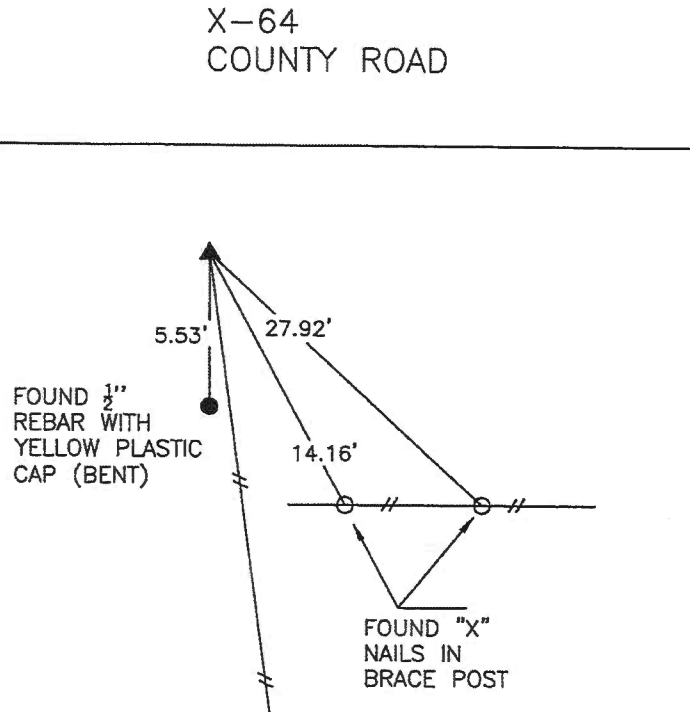
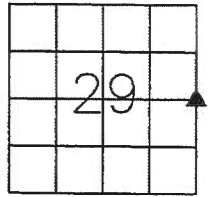
PREVIOUSLY RECORDED IN BOOK 356 PAGE 105.

MONUMENT DESCRIPTION AND HOW ESTABLISHED _____
 FOUND CUT "X" AT THE W 1/4 CORNER OF SEC.
 29-T83N-R1W.

NO SCALE



E 1/4 CORNER



PREVIOUSLY RECORDED IN BOOK 9798 PAGE 3971.

MONUMENT DESCRIPTION AND HOW ESTABLISHED _____
 FOUND 1/2" REBAR AT THE E 1/4 CORNER OF SEC.
 29-T83N-R1W AS PREVIOUSLY RECORDED TIES.



I hereby certify that this land surveying document and the related survey work was performed by me or under my direct personal supervision and that I am a duly licensed Land Surveyor under the laws of the State of Iowa.

Signed *Stephen Michael Brain* Date 7/12/17
 Stephen Michael Brain, L.S.
 My License Renewal Date is December 31, 2018
 License Number 9647
 Pages or sheets covered by this seal: 1/1

- A.THERE IS NO CERTIFICATE FOR THE CORNER ON FILE WITH THE RECORDER OF THE COUNTY IN WHICH THE CORNER IS LOCATED
- B.THE SURVEYOR IN RESPONSIBLE CHARGE OF THE LAND SURVEYING ACCEPTS A CORNER POSITION WHICH DIFFERS FROM THAT SHOWN IN THE PUBLIC RECORDS OF THE COUNTY IN WHICH THE CORNER IS LOCATED.
- C.THE CORNER MONUMENT IS REPLACED OR MODIFIED IN ANY WAY.
- D.THE REFERENCE TIES REFERRED TO IN AN EXISTING PUBLIC RECORD ARE NOT CORRECT.

CORNERS TO BE INDEXED

CORNER	SECTION	TOWNSHIP	RANGE
W 1/4 CORNER	29	T83N	R 1 W
E 1/4 CORNER	29	T83N	R 1 W

BRAIN ENGINEERING, INC.

1540 MIDLAND COURT NE
 CEDAR RAPIDS, IOWA 52402 522417-10
 (319) 294-9424

97 98 3971

FILED
RECORDERS OFFICE
JONES COUNTY IOWA

98 JUN -4 AM 10:18

LINDA J. BENDISSEN
RECORDER 6.00Pd

MMS CONSULTANTS INC., 1917 SO. GILBERT ST, IOWA CITY, IA, 52240, PH 319-351-8282

U.S. PUBLIC LAND SURVEY CORNER CERTIFICATE

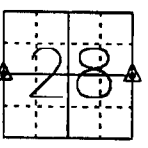
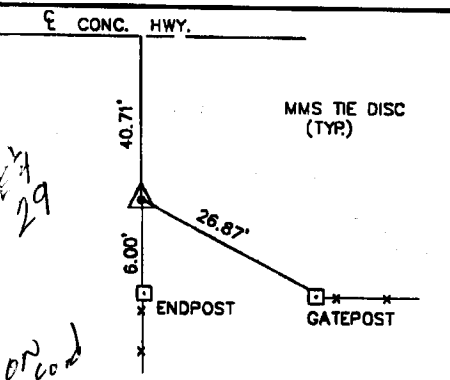
FOR LAND SURVEY MONUMENTS SITUATED IN SECTION 28, TOWNSHIP 83 NORTH,
RANGE 1 WEST, OF THE FIFTH PRINCIPAL MERIDIAN, JONES, COUNTY, IOWA.

REASON FOR PREPARING CERTIFICATE:

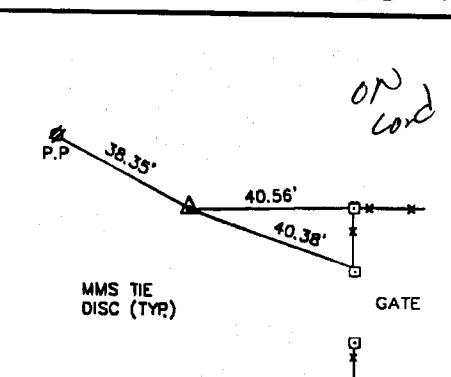
- A) THERE IS NO CERTIFICATE FOR THE CORNER ON FILE WITH THE RECORDER.
- B) CORNER FOUND DIFFERS FROM PREVIOUSLY RECORDED CERTIFICATE RECORDED IN BOOK , AT PAGE .

RECOVERY TIE DRAWING

W1/4 COR. 28-83-1



E 1/4 COR. 28-83-1

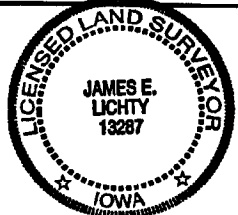


MONUMENT DESCRIPTION AND REMARKS :
 SET 5/8" PIN CAP #13287. THE W1/4
 COR. WAS ESTABLISHED BY
 OFFSETTING THE QUARTER-QUARTER
 FENCE FROM THE SOUTH. ALSO IT
 WAS POSITIONED ON THE N-S FC LINE.

MONUMENT DESCRIPTION AND REMARKS :
 FD. LIMESTONE, SET 5/8" PIN ON
 N.SIDE 18" DEEP.

I HEREBY CERTIFY THAT THE CORNER LOCATION(S) SHOWN ON THIS RECORD
 WERE DETERMINED BY ME OR UNDER MY DIRECT PERSONAL SUPERVISION AND
 THAT THIS U.S. PUBLIC LAND SURVEY MONUMENT RECORD IS CORRECT AND
 COMPLETE TO THE BEST OF MY KNOWLEDGE AND BELIEF.

James E. Lichty 5/29/98
 JAMES E. LICHTY, L.S. IA. LIC. NO. 13287 DATE
 MY BIENNIAL RENEWAL DATE IS DECEMBER 31, 19 28



- ▲ GOVERNMENT CORNER
- 5/8" TIE PIN SET
- CENTERLINE
- EXISTING FENCE LINE
- R.O.W. LINE

SHEET
 TITLE: U.S. PUBLIC LAND SURVEY CORNER CERTIFICATE
 PROJECT
 TITLE: BETTY FEUSS

MMS CONSULTANTS, INC.
 Iowa City, Iowa
 319-351-8282

20	T.E.H	G.D.M	G.D.M	4-20-98	SCALE NONE	482	833-002
----	-------	-------	-------	---------	---------------	-----	---------