

SECTION CORNER CERTIFICATE

OF
 LAND SURVEY MONUMENTS SITUATED IN SECTION 2, TOWNSHIP 83 NORTH,
 RANGE 1 WEST, OF THE FIFTH PRINCIPAL MERIDIAN, JONES, COUNTY, IOWA.

PREVIOUSLY RECORDED IN BOOK _____ AT PAGE _____

FOR RECORDER'S USE

REASON FOR PREPARING CERTIFICATE:

- A) THERE IS NO CERTIFICATE FOR THE CORNER ON FILE WITH THE RECORDER OF THE COUNTY IN WHICH THE CORNER IS LOCATED.
- B) CORNER POSITION DIFFERS FROM THAT SHOWN IN THE PUBLIC RECORDS OF THE COUNTY IN WHICH THE CORNER IS LOCATED.
- C) THE CORNER MONUMENT HAS BEEN REPLACED OR MODIFIED.
- D) THE REFERENCE TIES REFERRED TO IN AN EXISTING PUBLIC RECORD ARE INCORRECT.

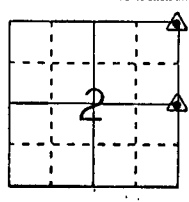
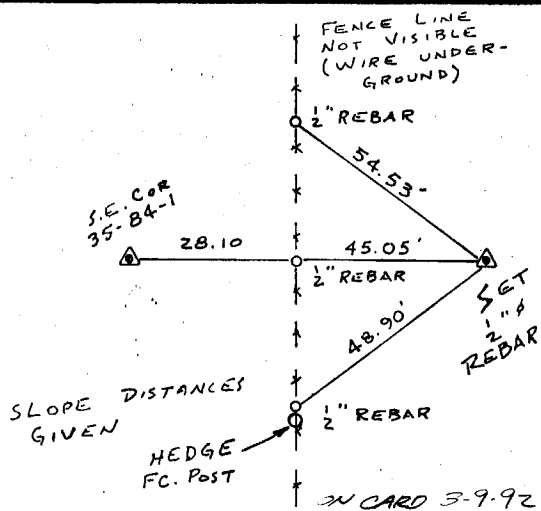
MONUMENT DESCRIPTION AND REMARKS :

N.E. CORNER SECTION 2-T83N-RIW SET 1/2" # REBAR WITH L.S.
 CAP No. 11954 12" DEEP IN FIELD, 45' EAST OF OLD TORN OUT
 FENCE LINE

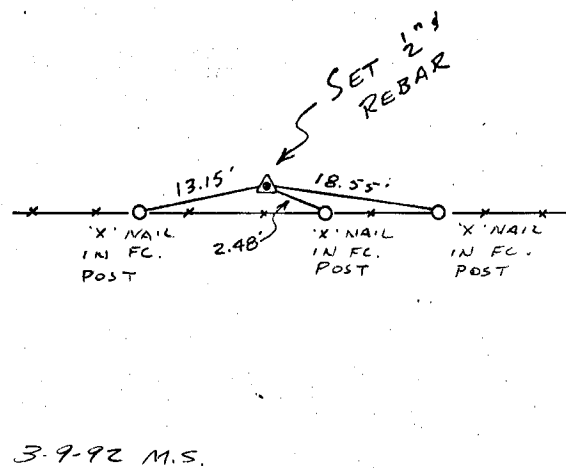
E'4 CORNER SECTION 2-T83N-RIW SET 1/2" # REBAR WITH L.S.
 CAP No. 11954 1' NORTH OF FENCE LINE FLUSH WITH GROUND

RECOVERY TIE DRAWING

N.E. Cor. 2-83-1



E'4 Cor. 2-83-1



I, DANIEL J. JOHNSON, CERTIFY THAT THE CORNER LOCATION(S) SHOWN ON THIS RECORD WERE DETERMINED BY ME OR UNDER MY DIRECTION AND CONTROL AND THAT THIS U.S. PUBLIC LAND SURVEY MONUMENT RECORD IS CORRECT AND COMPLETE TO THE BEST OF MY KNOWLEDGE AND BELIEF.

Daniel J. Johnson 3-2-92
 DANIEL J. JOHNSON L.S. NO. 11954 DATE

DZM96L	△ GOVERNMENT CORNER ○ 5/8" TIE PIN SET --- CENTERLINE - - - EXISTING FENCE LINE - - - R.O.W. LINE	SHEET TITLE: U.S. PUBLIC LAND SURVEY RECORD PROJECT TITLE: JONES COUNTY PROJECT # 575	HALL AND HALL ENGINEERS, INC. 226 29TH STREET DRIVE S.E. CEDAR RAPIDS, IOWA 52403 319-362-9548
	D W N R.W.B. C H K D.T.T. A P P	DATE: 2-14-92 SCALE: NONE FNO: OT 23 PRNO: 4-579	

SECTION CORNER CERTIFICATE

OF
 LAND SURVEY MONUMENTS SITUATED IN SECTION 35, TOWNSHIP 84 NORTH,
 RANGE 1 WEST, OF THE FIFTH PRINCIPAL MERIDIAN, JONES, COUNTY, IOWA.

PREVIOUSLY RECORDED IN BOOK _____ AT PAGE _____ .

FOR RECORDER'S USE

REASON FOR PREPARING CERTIFICATE:

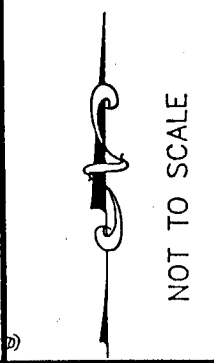
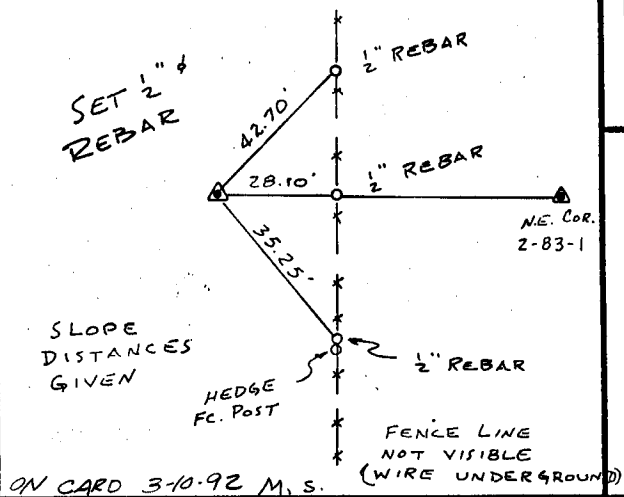
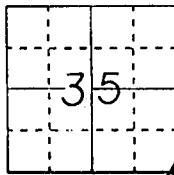
- A) THERE IS NO CERTIFICATE FOR THE CORNER ON FILE WITH THE RECORDER OF THE COUNTY IN WHICH THE CORNER IS LOCATED.
- B) CORNER POSITION DIFFERS FROM THAT SHOWN IN THE PUBLIC RECORDS OF THE COUNTY IN WHICH THE CORNER IS LOCATED.
- C) THE CORNER MONUMENT HAS BEEN REPLACED OR MODIFIED.
- D) THE REFERENCE TIES REFERRED TO IN AN EXISTING PUBLIC RECORD ARE INCORRECT.

MONUMENT DESCRIPTION AND REMARKS :

S.E. CORNER SECTION 35-T84N-R1W SET 1/2" REBAR WITH
 L.S. CAP # 11954 FLUSH WITH GROUND 28' WEST OF
 OLD TORN OUT FENCE LINE

RECOVERY TIE DRAWING

S. E. Cor. 35-84-1



I, DANIEL J. JOHNSON, CERTIFY THAT THE CORNER LOCATION(S) SHOWN ON THIS RECORD WERE DETERMINED BY ME OR UNDER MY DIRECTION AND CONTROL AND THAT THIS U.S. PUBLIC LAND SURVEY MONUMENT RECORD IS CORRECT AND COMPLETE TO THE BEST OF MY KNOWLEDGE AND BELIEF.

Daniel J. Johnson 3-2-92
 DANIEL J. JOHNSON L.S. NO. 11954 DATE



DZMOMT	<input checked="" type="checkbox"/> GOVERNMENT CORNER <input type="checkbox"/> 5/8" TIE PIN SET	SHEET TITLE: U.S. PUBLIC LAND SURVEY RECORD	H H E	HALL AND HALL ENGINEERS, INC. 226 29TH STREET DRIVE S.E. CEDAR RAPIDS, IOWA 52403 319-362-9548					
	<input type="checkbox"/> CENTERLINE <input type="checkbox"/> EXISTING FENCE LINE <input type="checkbox"/> R.O.W. LINE	PROJECT TITLE: JONES COUNTY PROTECT # 575		F NO B	P NO R O J	OT23 4579			
D W N	R.W.B	C H K	D.J.J.	A P P	DATE 2-14-92	SCALE NONE			