

# SECTION CORNER CERTIFICATE

OF  
 LAND SURVEY MONUMENTS SITUATED IN SECTION 30, TOWNSHIP 83 NORTH,  
 RANGE 1 WEST, OF THE FIFTH PRINCIPAL MERIDIAN, JONES, COUNTY, IOWA.

PREVIOUSLY RECORDED IN BOOK \_\_\_\_\_ AT PAGE \_\_\_\_\_

FOR RECORDER'S USE

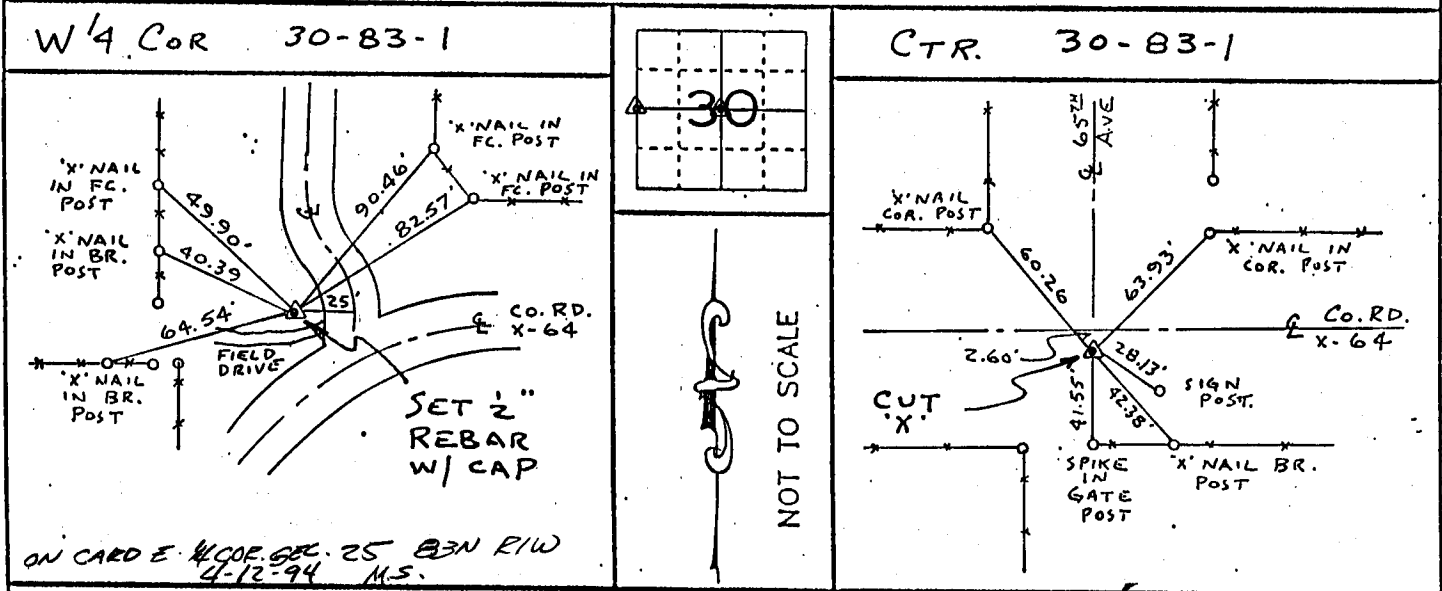
**REASON FOR PREPARING CERTIFICATE:**

- A) THERE IS NO CERTIFICATE FOR THE CORNER ON FILE WITH THE RECORDER OF THE COUNTY IN WHICH THE CORNER IS LOCATED.
- B) CORNER POSITION DIFFERS FROM THAT SHOWN IN THE PUBLIC RECORDS OF THE COUNTY IN WHICH THE CORNER IS LOCATED.
- C) THE CORNER MONUMENT HAS BEEN REPLACED OR MODIFIED.
- D) THE REFERENCE TIES REFERRED TO IN AN EXISTING PUBLIC RECORD ARE INCORRECT.

**MONUMENT DESCRIPTION AND REMARKS:**

CENTER - SECTION 30-T83N-RIW CUT 'X' IN CONC.  
PAVEMENT OF COUNTY ROAD X 64 2.60 SOUTH OF E JOINT  
ON E OF 65<sup>TH</sup> AVE.  
W/4 CORNER SECTION 30-T83N-RIW SET 1/2" REBAR W/ L.S. CAP  
# 11954 FLUSH W/ GROUND 25' WEST OF E COUNTY ROAD F 14'2"  
NORTH OF E OF FIELD DRIVE

## RECOVERY TIE DRAWING



I, DANIEL J. JOHNSON, CERTIFY THAT THE CORNER LOCATION(S) SHOWN ON THIS RECORD WERE DETERMINED BY ME OR UNDER MY DIRECTION AND CONTROL AND THAT THIS U.S. PUBLIC LAND SURVEY MONUMENT RECORD IS CORRECT AND COMPLETE TO THE BEST OF MY KNOWLEDGE AND BELIEF.



*Daniel J. Johnson*  
 DANIEL J. JOHNSON L.S. NO 11954 DATE 3-29-94

D W N R W B	GOVERNMENT CORNER O 5/8" TIC PIN SET	SHEET NO. U.S. PUBLIC LAND SURVEY RECORD	HALL AND HALL ENGINEERS, INC. 226 29TH STREET DRIVE S.E. CEDAR RAPIDS, IOWA 52403 319-362-9548			
	CENTERLINE --- EXISTING FENCE LINE --- R.O.W. LINE			PROJECT NO. JONES Co. PROJECT No. FM 53 (55)-55-53		
D W N R W B	C H K D J J	A P D J J	D A T E 3-2-93	SCALE NONE	P N O T 27	P R O J 4716