

Instrument #: 2017-1864  
 07/14/2017 10:07:15 AM Total Pages: 1  
 ZSC SECTION CORNER CERTIFICATE  
 Recording Fee: \$7.00 Transfer Tax: \$0  
 Sheri L. Jones, Recorder, Jones County Iowa



PREPARED BY

STEPHEN MICHAEL BRAIN, BRAIN ENGINEERING, INC., 1540 MIDLAND COURT NE, CEDAR RAPIDS, IOWA PH. (319) 294-9424

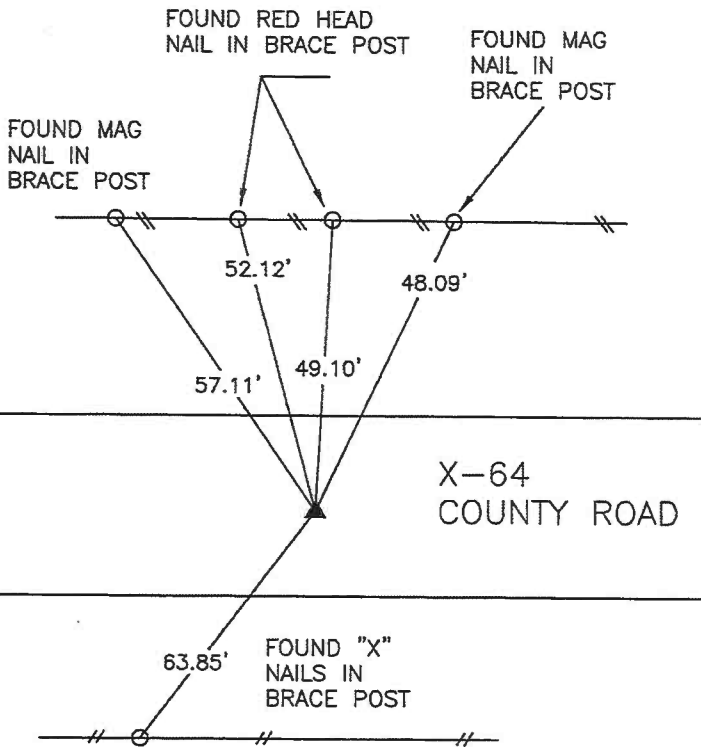
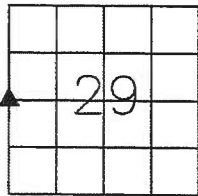
# UNITED STATES PUBLIC LAND SURVEY CORNER CERTIFICATE

LAND SURVEY MONUMENTS SITUATED IN SECTION 29, TOWNSHIP 83 NORTH  
 RANGE 1 WEST OF THE 5TH P.M., JONES COUNTY, IOWA.

NO SCALE



W 1/4 CORNER



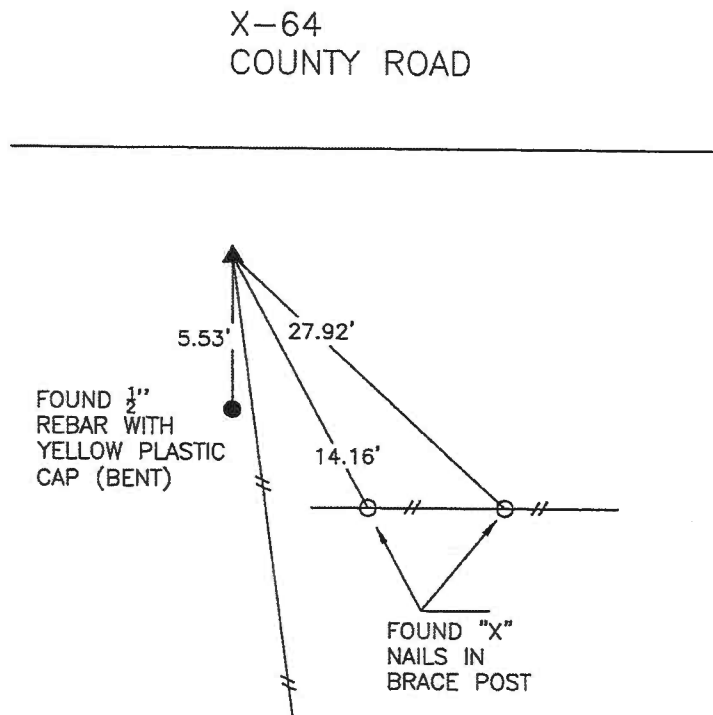
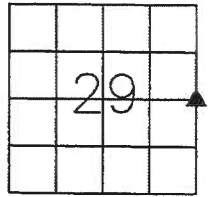
PREVIOUSLY RECORDED IN BOOK 356 PAGE 105.

MONUMENT DESCRIPTION AND HOW ESTABLISHED \_\_\_\_\_  
 FOUND CUT "X" AT THE W 1/4 CORNER OF SEC.  
 29-T83N-R1W.

NO SCALE



E 1/4 CORNER



PREVIOUSLY RECORDED IN BOOK 9798 PAGE 3971.

MONUMENT DESCRIPTION AND HOW ESTABLISHED \_\_\_\_\_  
 FOUND 1/2" REBAR AT THE E 1/4 CORNER OF SEC.  
 29-T83N-R1W AS PREVIOUSLY RECORDED TIES.



I hereby certify that this land surveying document and the related survey work was performed by me or under my direct personal supervision and that I am a duly licensed Land Surveyor under the laws of the State of Iowa.

Signed *Stephen Michael Brain* Date 7/12/17  
 Stephen Michael Brain, L.S.  
 My License Renewal Date is December 31, 2018  
 License Number 9647  
 Pages or sheets covered by this seal: 1/1

- A.THERE IS NO CERTIFICATE FOR THE CORNER ON FILE WITH THE RECORDER OF THE COUNTY IN WHICH THE CORNER IS LOCATED
- B.THE SURVEYOR IN RESPONSIBLE CHARGE OF THE LAND SURVEYING ACCEPTS A CORNER POSITION WHICH DIFFERS FROM THAT SHOWN IN THE PUBLIC RECORDS OF THE COUNTY IN WHICH THE CORNER IS LOCATED.
- C.THE CORNER MONUMENT IS REPLACED OR MODIFIED IN ANY WAY.
- D.THE REFERENCE TIES REFERRED TO IN AN EXISTING PUBLIC RECORD ARE NOT CORRECT.

CORNERS TO BE INDEXED

CORNER	SECTION	TOWNSHIP	RANGE
W 1/4 CORNER	29	T83N	R 1 W
E 1/4 CORNER	29	T83N	R 1 W

**BRAIN ENGINEERING, INC.**

1540 MIDLAND COURT NE  
 CEDAR RAPIDS, IOWA 52402 522417-10  
 (319) 294-9424

# SECTION CORNER CERTIFICATE

OF  
 LAND SURVEY MONUMENTS SITUATED IN SECTION 30, TOWNSHIP 83 NORTH,  
 RANGE 1 WEST, OF THE FIFTH PRINCIPAL MERIDIAN, JONES, COUNTY, IOWA.

PREVIOUSLY RECORDED IN BOOK \_\_\_\_\_ AT PAGE \_\_\_\_\_ .

FOR RECORDER'S USE

**REASON FOR PREPARING CERTIFICATE:**

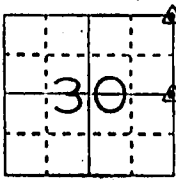
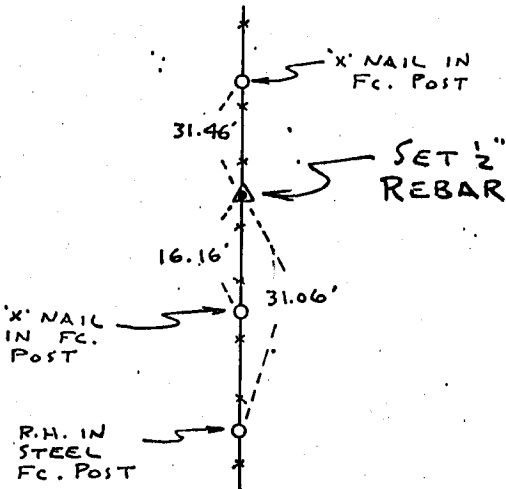
- A) THERE IS NO CERTIFICATE FOR THE CORNER ON FILE WITH THE RECORDER OF THE COUNTY IN WHICH THE CORNER IS LOCATED.
- B) CORNER POSITION DIFFERS FROM THAT SHOWN IN THE PUBLIC RECORDS OF THE COUNTY IN WHICH THE CORNER IS LOCATED.
- C) THE CORNER MONUMENT HAS BEEN REPLACED OR MODIFIED.
- D) THE REFERENCE TIES REFERRED TO IN AN EXISTING PUBLIC RECORD ARE INCORRECT.

**MONUMENT DESCRIPTION AND REMARKS :**

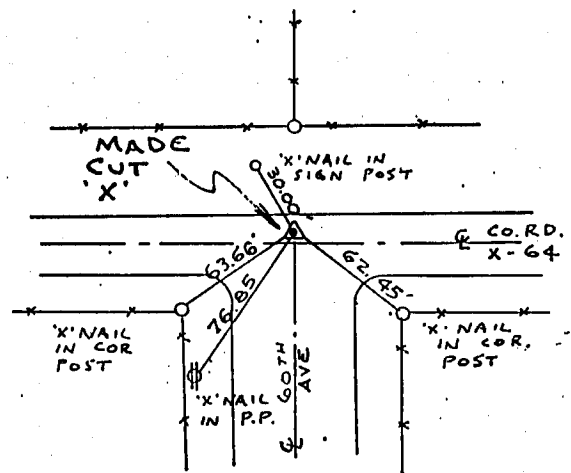
N.E. CORNER SECTION 30-T83N-R1W SET 1/2" REBAR W/ C.S.  
 CAP No. 11954 ON NORTH-SOUTH FC. LINE  
 E'4 CORNER SECTION 30-T83N-R1W MADE CUT 'X' IN CONC.  
 PAYEMENT ON COUNTY ROAD X 64 1.65' NORTH OF E JOINT &  
 ON E OF 60TH AVE. IN LINE W/ FC. NORTH

## RECOVERY TIE DRAWING

N. E. Cor. 30-83-1



E'4 Cor. 30-83-1



4-12-94 M.S.

I, DANIEL J. JOHNSON, CERTIFY THAT THE CORNER LOCATION(S) SHOWN ON THIS RECORD WERE DETERMINED BY ME OR UNDER MY DIRECTION AND CONTROL AND THAT THIS U.S. PUBLIC LAND SURVEY MONUMENT RECORD IS CORRECT AND COMPLETE TO THE BEST OF MY KNOWLEDGE AND BELIEF.

Daniel J. Johnson 3-29-94  
 DANIEL J. JOHNSON L.S. NO 11954 DATE



DZC:COMP A GOVERNMENT CORNER 5/8" TIC PIN SET --- CENTERLINE - - - EXISTING FENCE LINE - - - R.O.W. LINE	SHEET NO.: U.S. PUBLIC LAND SURVEY RECORD PROJECT NO.: JONES Co. PROJECT No. FM 53(55)--55-53	HALL AND HALL ENGINEERS, INC. 226 29TH STREET DRIVE S.E. CEDAR RAPIDS, IOWA 52403 319-362-9548
	D W N RWB C H K DJJ A P P DJJ D A T E 3-2-93 SCALE NONE P N O T 27 P N O J 47.16	