

2003 1047

FILED
RECORDERS OFFICE
JONES COUNTY IOWA

03 MAR 13 PM 12:46

MARIE KRUTZFIELD 6.00 pd

PREPARED BY HALL & HALL ENGINEERS, INC. 209 29TH STREET N.E. CEDAR RAPIDS, IOWA 52402 (319) 362-9548

SECTION CORNER CERTIFICATE

OF

LAND SURVEY MONUMENTS SITUATED IN SECTION 30, TOWNSHIP 83 NORTH,
RANGE 1 WEST, OF THE FIFTH PRINCIPAL MERIDIAN, JONES COUNTY, IOWA.

PREVIOUSLY RECORDED IN BOOK _____ AT PAGE _____

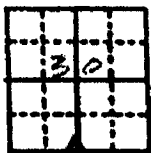
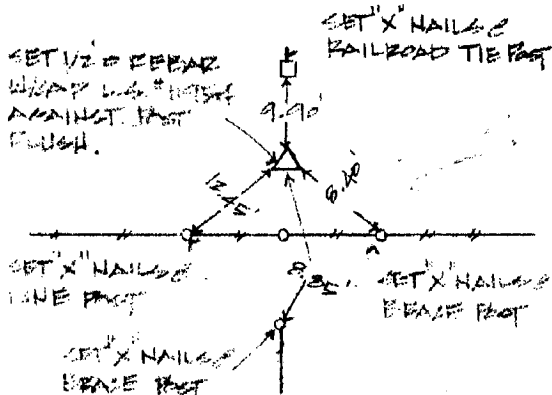
MONUMENT DESCRIPTION AND REMARKS:

S 1/4 CORNER OF SECTION 30, SET 1/2" REBAR W/ CAP L.S. #11954

RECOVERY TIE DRAWING

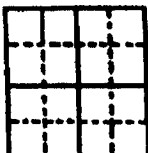
S 1/4 CORNER OF SEC. 30

24-31-83-1



8781

831316.022703



I hereby certify that this land surveying document was prepared and the related survey work was performed by me or under my direct personal supervision and that I am a duly licensed Land Surveyor under the laws of the State of Iowa.

Signature: Daniel J. Johnson Date: 2-27-03

Daniel J. Johnson, L.S. #11954
My license renewal date is December 31, 2004

Pages or sheets covered by this book:
(Entire subsection unless specified here)

REASON FOR PREPARING CERTIFICATE:

- A) THERE IS NO CERTIFICATE FOR THE CORNER ON FILE WITH THE RECORDER OF THE COUNTY IN WHICH THE CORNER IS LOCATED
- B) CORNER POSITION DIFFERS FROM THAT SHOWN IN THE PUBLIC RECORDS OF THE COUNTY IN WHICH THE CORNER IS LOCATED.
- C) THE CORNER MONUMENT HAS BEEN REPLACED OR MODIFIED
- D) THE REFERENCE TIES REFERRED TO IN AN EXISTING PUBLIC RECORD ARE INCORRECT

GOVERNMENT CORNER
 PROPERTY CORNER FOUND
 1/4 1/4 1/4 1/4 L.S. CAP XT
 EXISTING FENCE LINE
 PROPERTY LINE

SHEET NO. 1 OF 1 U.S. PUBLIC LAND SURVEY RECORD

PROJECT NO. JONES COUNTY ENGINEERS (BRIT)

HALL AND HALL ENGINEERS, INC.
 209 29TH STREET N.E.
 CEDAR RAPIDS, IOWA 52402
 (319) 362-9548

NO. 1 DATE 2/27/03 BY D.J.J. SCALE N.T.S. SHEET NO. 4716

SECTION CORNER CERTIFICATE

OF
 LAND SURVEY MONUMENTS SITUATED IN SECTION 30, TOWNSHIP 83 NORTH,
 RANGE 1 WEST, OF THE FIFTH PRINCIPAL MERIDIAN, JONES, COUNTY, IOWA.

PREVIOUSLY RECORDED IN BOOK _____ AT PAGE _____ .

FOR RECORDER'S USE

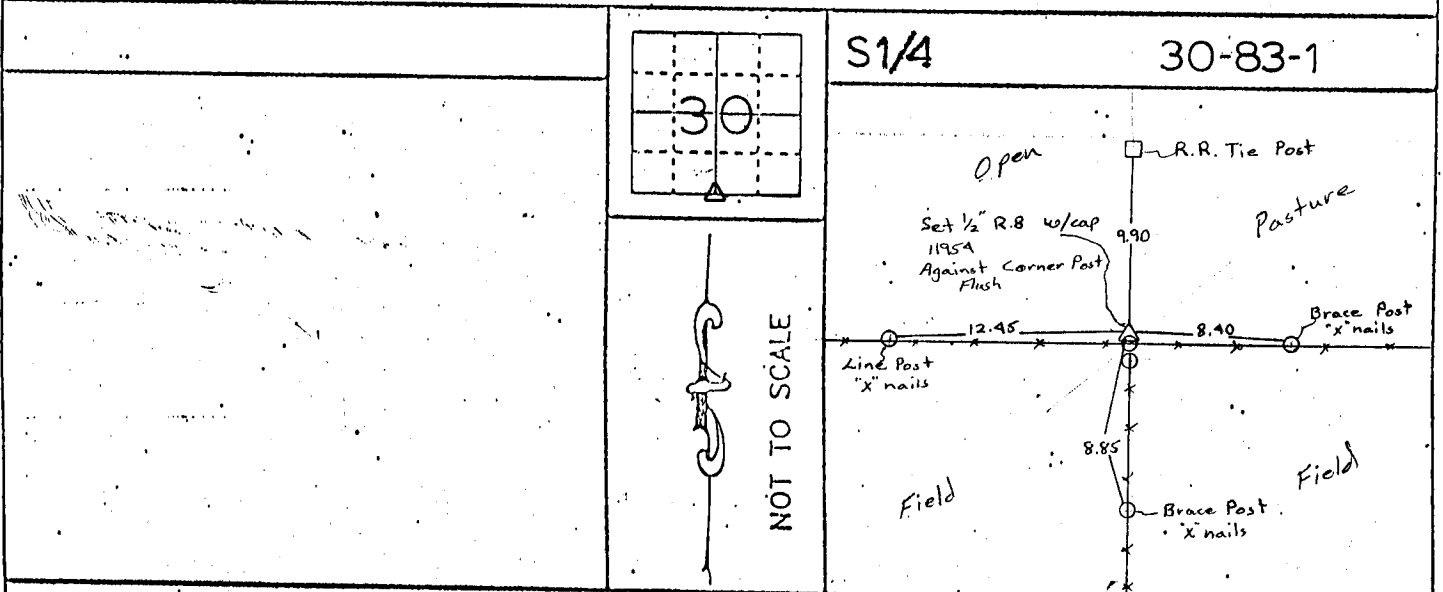
REASON FOR PREPARING CERTIFICATE:

- A) THERE IS NO CERTIFICATE FOR THE CORNER ON FILE WITH THE RECORDER OF THE COUNTY IN WHICH THE CORNER IS LOCATED.
- B) CORNER POSITION DIFFERS FROM THAT SHOWN IN THE PUBLIC RECORDS OF THE COUNTY IN WHICH THE CORNER IS LOCATED.
- C) THE CORNER MONUMENT HAS BEEN REPLACED OR MODIFIED.
- D) THE REFERENCE TIES REFERRED TO IN AN EXISTING PUBLIC RECORD ARE INCORRECT.

MONUMENT DESCRIPTION AND REMARKS :

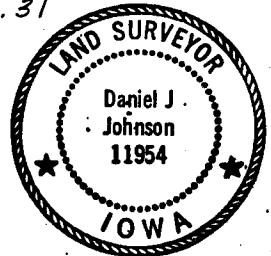
South 1/4 Section 30 - Township 83 North - Range 1 West Set 1/2" Rebar w/cap 11954
 Against North face of Corner Post Flush with ground

RECOVERY TIE DRAWING



ON Cord N 1/4 Sec. 31
 11-29-94 P.P.

I, DANIEL J. JOHNSON, - CERTIFY THAT THE CORNER LOCATION(S) SHOWN ON THIS RECORD WERE DETERMINED BY ME OR UNDER MY DIRECTION AND CONTROL AND THAT THIS U.S. PUBLIC LAND SURVEY MONUMENT RECORD IS CORRECT AND COMPLETE TO THE BEST OF MY KNOWLEDGE AND BELIEF.



Daniel J. Johnson 8-15-94
 DANIEL JOHNSON L.S. NO 11954 DATE

OZMOMC KMR D T A M	△ GOVERNMENT CORNER ● PROPERTY CORNER FOUND ○ 1/2" X30" W/ L.S. CAP SET - - - EXISTING FENCE LINE ——— PROPERTY LINE	SHEET TITLE: U.S. PUBLIC LAND SURVEY RECORD PROJECT TITLE: Jones Co. Project No. FM 53(35)--55-53	HALL AND HALL ENGINEERS, INC. 209 29TH STREET N.E. CEDAR RAPIDS, IOWA 52402 (319) 382-9548
	D W D JSR K I C D J J A P P R D A T E 8/15/94 S C A L E None	P N O B P R O J 4716	