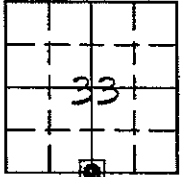


Marie Krutzfield, Recorder
Jones County, Iowa

Prepared by: Richard M. Kordick, P.E.L.S., 120 East Main, Suite D, Anamosa, IA 52205 Phone: (319) 462-4498

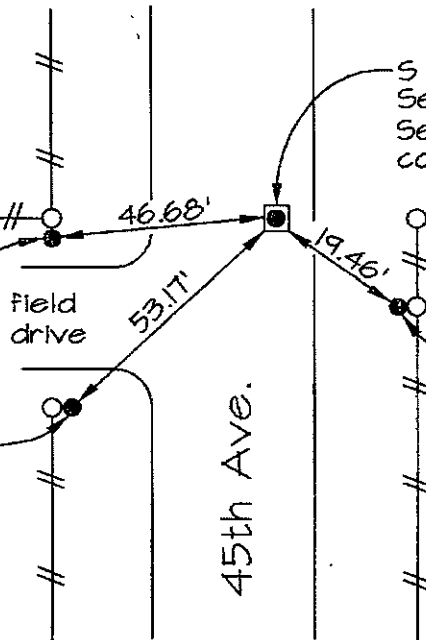
U.S. PUBLIC LAND SURVEY CORNER CERTIFICATE



33-83N-1W
Jones County
OXFORD Township

Set 1/2" rebar, 4" high
on S. side of corner post

Set 1/2" rebar, 4" high
on E. side of gate post



S 1/4 Corner
Section 33-83-1
Set 1/2" rebar w/ red
cap "Kordick 13657", 4" deep

Set 1/2" rebar, 4" high
on W. side of brace post

Plan-View: No Scale

Section corner location: S 1/4 Corner, Section 33-83-1

Reason for corner tie:

- A) There is no certificate for the corner on file with the recorder.
- B) Corner position differs from previously recorded certificate recorded in book , page
- C) Corner monument was replaced or modified.
- D) Reference ties in previously recorded certificate recorded in book , page are incorrect or missing.

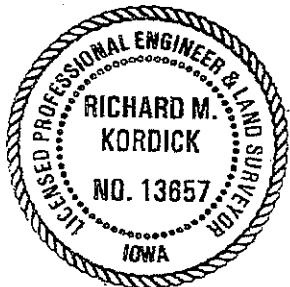
Research at the recorder's office, auditor's office, and engineer's office revealed the following:
A plat in Cedar County Auditor's Office Bk. 1 - Pg. 219 referenced this corner.

Field search performed was as follows:

Field search was performed with a metal detector, excavation and probing. Nothing was found.

Monument found or set:

The corner was determined to be lost. A 1/2" rebar with red cap "Kordick 13657" was set, 4" deep, equidistance on-line from the SW corner to the SE corner.



I hereby certify that this land surveying document was prepared and the related survey work was performed by me or under my direct personal supervision and that I am a duly licensed Land Surveyor under the laws of the State of Iowa.

Richard M. Kordick 10/26/2006
Richard M. Kordick date
License number 13657
My license renewal date is December 31, 2007.
Pages or sheets covered by this seal: 1 of 1

LEGEND:

- Section Corner as noted
- Power Pole
- Section line
- Centerline
- Existing Fence
- Recorded Dist.

Kordick Surveying & Engineering
120 East Main, Suite D
Anamosa, Iowa 52205
(319) 462-4498

U.S. Public Land Survey Corner Certificate

Project: Plat of Survey
Parcel No. 2006-146,
2006-147, and 2006-148
Proprietor: Mo Star Farms, Inc.

Field BK
06087
Date
10-26-06
Job No.
06087
Sheet
1 of 1