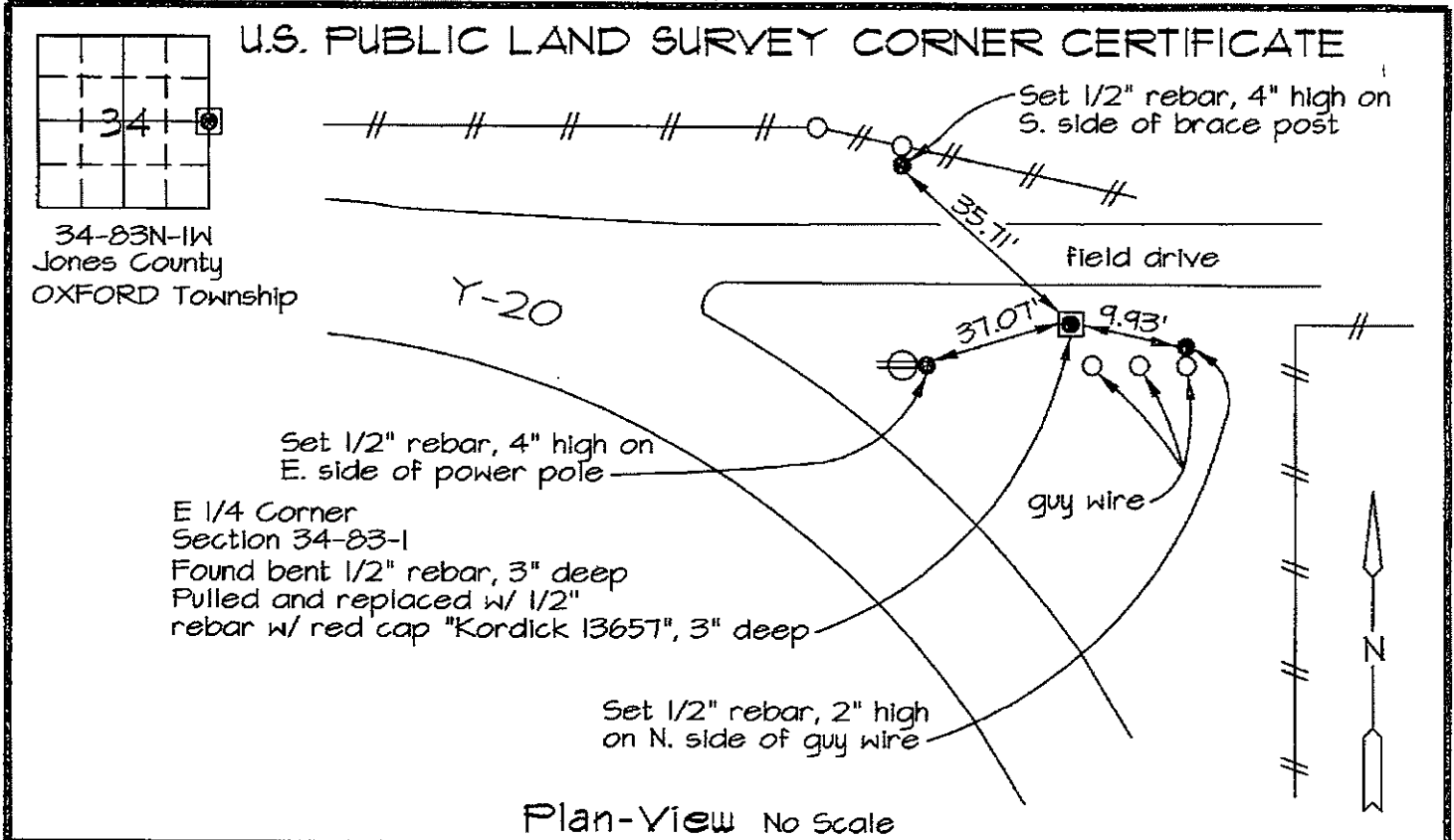


Marie Krutzfield, Recorder  
 Jones County, Iowa

Prepared by: Richard M. Kordick, P.E., L.S., 120 East Main, Suite D, Anamosa, IA 52205 Phone: (319) 462-4498



Section corner location: E 1/4 Corner, Section 34-83-1

Reason for corner tie:

- A) There is no certificate for the corner on file with the recorder.
- B) Corner position differs from previously recorded certificate recorded in book , page
- C) Corner monument was replaced or modified.
- D) Reference ties in previously recorded certificate recorded in book ; page are incorrect or missing.

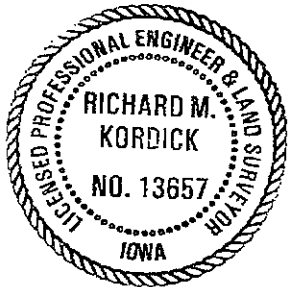
Research at the recorder's office, auditor's office, and engineer's office revealed the following: None.

Field search performed was as follows:

Field search was performed with a metal detector, excavation and probing.

Monument Found or set:

A bent 1/2" rebar, 3" deep, was found and replaced with a 1/2" rebar with red cap "Kordick 13657", 3" deep, and used as the corner.



I hereby certify that this land surveying document was prepared and the related survey work was performed by me or under my direct personal supervision and that I am a duly licensed Land Surveyor under the laws of the State of Iowa.

*Richard M. Kordick* 10/26/2006  
 Richard M. Kordick date  
 License number 13657

My license renewal date is December 31, 2007.  
 Pages or sheets covered by this seal: 1 of 1

**LEGEND:**

- Section Corner as noted
- Power Pole
- Section line
- Centerline
- /// Existing Fence
- ( ) Recorded Dist.

**Kordick Surveying & Engineering**  
 120 East Main, Suite D  
 Anamosa, Iowa 52205  
 (319) 462-4498

**U.S. Public Land Survey Corner Certificate**

Project: Plat of Survey  
 Parcel No. 2006-146,  
 2006-147, and 2006-148  
 Proprietor: Mo Star Farms, Inc.

Field BK  
 06087  
 Date  
 10-26-06  
 Job No.  
 06087  
 Sheet  
 1 of 1