

Jones County Marie Krutzfield Recorder  
 Fee Book 2011 2651  
 10/17/2011 @0317PM # Pages 1  
 ZSC SEC COR CERT  
 Total Fees: \$7.00

Prepared by Wm. Burger Land Surveyor 510 3rd Street West Court, Worthington, Iowa Phone 563 - 855 2028

### UNITED STATES PUBLIC LAND SURVEY CORNER CERTIFICATE

Land Survey Monuments situated in Section 34, Township 83N, Range 1W, of the Fifth Principal Meridian, Jones County, Iowa. Previously recorded in SEE NOTE in the Office of the County Recorder

**Monument Description and Remarks:**

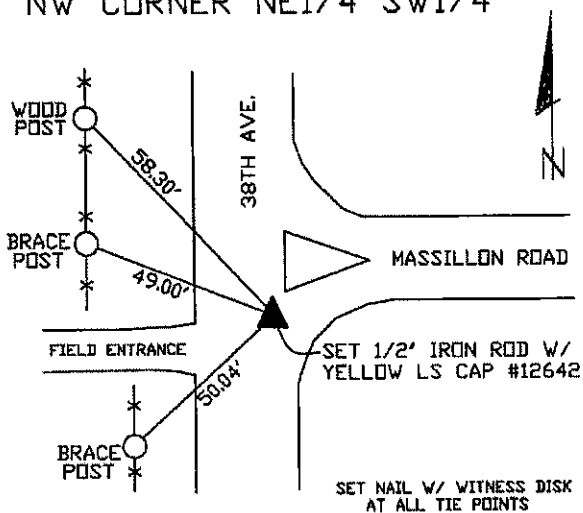
NW CORNER NE1/4 SW1/4 - SET 1/2" IRON ROD W/ YELLOW LS CAP #12642 - SET ON LINE AND MIDWAY BETWEEN THE W1/4 CORNER AND THE CENTER OF SECTION

SW CORNER NE1/4 SW1/4 - FD. 1/2" IRON ROD W/ RED LS CAP #13657

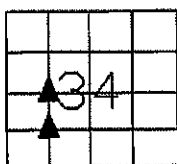
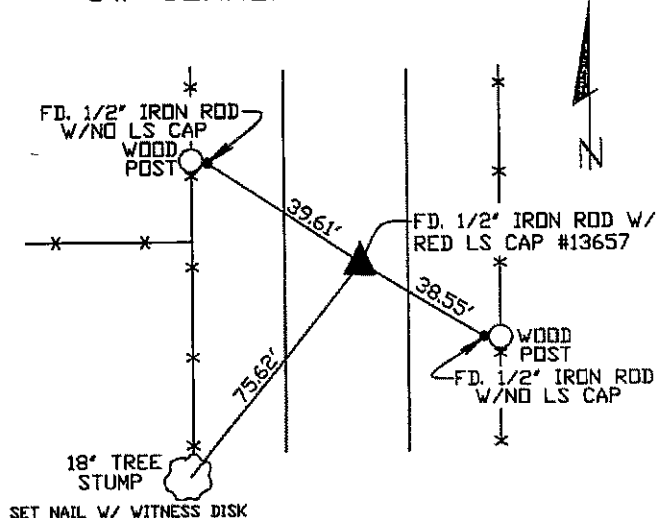
NOTE - THE SW CORNER NE1/4 SW1/4 WAS PREVIOUSLY TIED AND RECORDED IN FILE NO. 2006 4099

#### PLAN VIEW

NW CORNER NE1/4 SW1/4



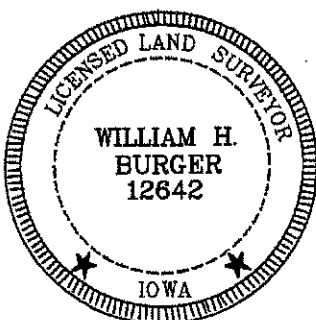
SW CORNER NE1/4 SW1/4



SEC. 34 TWP. 83N RANGE 1W

**CORNERS TO BE INDEXED**

NW CORNER NE1/4 SW1/4	34	83N	1W
SW CORNER NE1/4 SW1/4	34	83N	1W



I hereby certify that this land surveying document was prepared and related survey work was performed by me or under my direct personal supervision and that I am a duly licensed Land Surveyor under the laws of the State of Iowa.

*William H. Burger* 10/17/11  
 William H. Burger Date

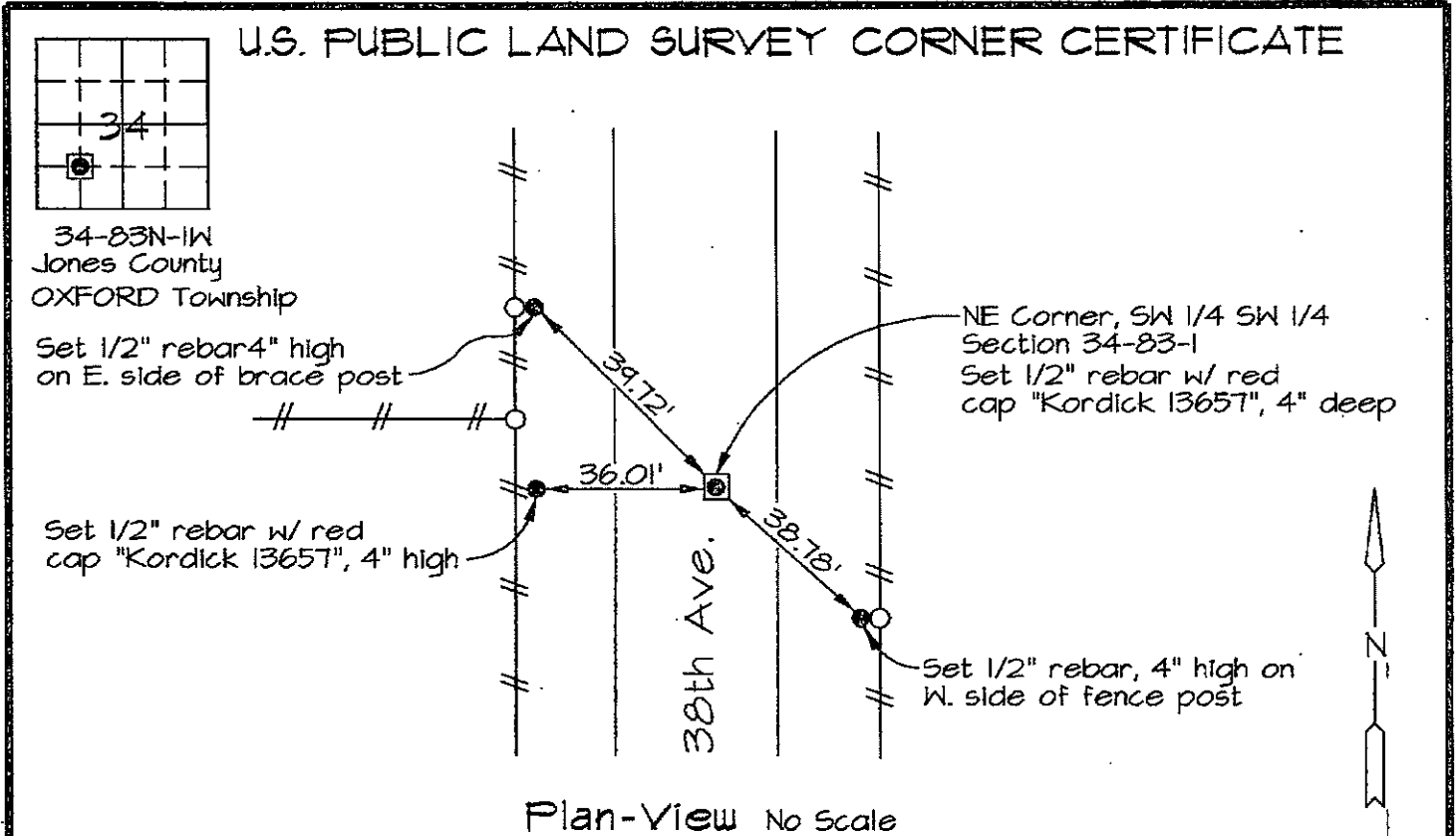
License number 12642

My license renewal date is December 31, 2012

Pages or Sheets covered by this seal: Sheet 1 of 1

Marie Krutzfield, Recorder  
 Jones County, Iowa

Prepared by: Richard M. Kordick, P.E.L.S., 120 East Main, Suite D, Anamosa, IA 52205 Phone: (319) 462-4498



Plan-View No Scale

Section corner location: NE Corner, SW 1/4 SW 1/4 Section 34-83-1

Reason for corner tie:

- A) There is no certificate for the corner on file with the recorder.
- B) Corner position differs from previously recorded certificate recorded in book , page
- C) Corner monument was replaced or modified.
- D) Reference ties in previously recorded certificate recorded in book , page are incorrect or missing.

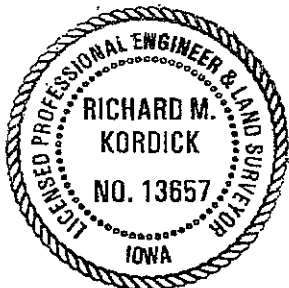
Research at the recorder's office, auditor's office, and engineer's office revealed the following: None.

Field search performed was as follows:

Field search was performed with a metal detector, excavation and probing. Nothing was found.

Monument found or set:

The corner was determined to be lost. A 1/2" rebar with red cap "Kordick 13657" was set, 4" deep, using the double proportionate measure method.



I hereby certify that this land surveying document was prepared and the related survey work was performed by me or under my direct personal supervision and that I am a duly licensed Land Surveyor under the laws of the State of Iowa.

*Richard M. Kordick* 10/26/2006  
 Richard M. Kordick date  
 License number 13657  
 My license renewal date is December 31, 2007.  
 Pages or sheets covered by this seal: 1 of 1

LEGEND:

- Section Corner as noted
- Power Pole
- Section line
- Centerline
- Existing Fence
- Recorded Dist.

Kordick Surveying & Engineering  
 120 East Main, Suite D  
 Anamosa, Iowa 52205  
 (319) 462-4498

U.S. Public Land  
 Survey Corner Certificate

Project: Plat of Survey  
 Parcel No. 2006-146,  
 2006-147, and 2006-148  
 Proprietor: Mo Star Farms, Inc.

Field BK 06087  
 Date 10-26-06  
 Job No. 06087  
 Sheet 1 of 1