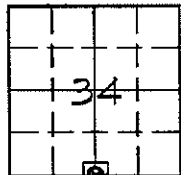


Marie Krutzfield, Recorder  
 Jones County, Iowa

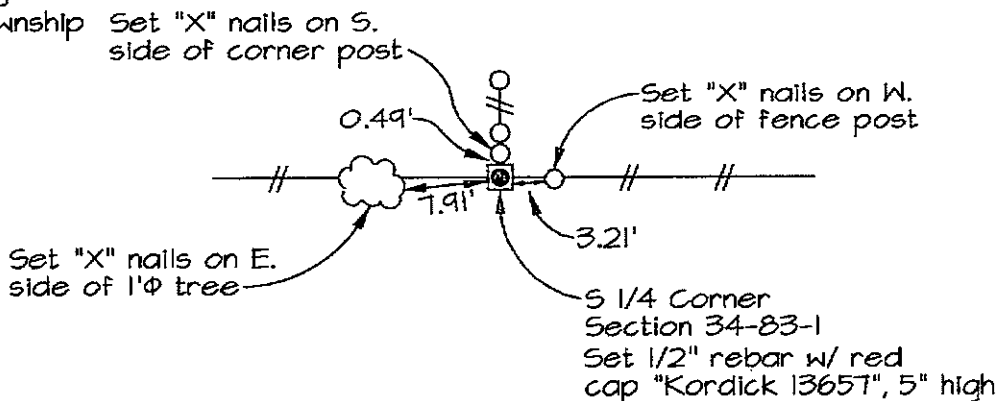
Prepared by: Richard M. Kordick, P.E., L.S., 120 East Main, Suite D, Anamosa, IA 52205 Phone: (319) 462-4498

U.S. PUBLIC LAND SURVEY CORNER CERTIFICATE



34-83N-1W  
 Jones County

OXFORD Township



Plan-View No Scale

Section corner location: S 1/4 Corner, Section 34-83-1

Reason for corner tie:

- A) There is no certificate for the corner on file with the recorder.
- B) Corner position differs from previously recorded certificate recorded in book , page
- C) Corner monument was replaced or modified.
- D) Reference ties in previously recorded certificate recorded in book , page are incorrect or missing.

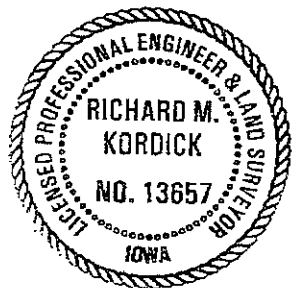
Research at the recorder's office, auditor's office, and engineer's office revealed the following:  
 None.

Field search performed was as follows:

Field search was performed with a metal detector, excavation and probing. Nothing was found.

Monument found or set:

The corner was determined to be obliterated. A 1/2" rebar with red cap "Kordick 13657" was set, 5" high, at the fence corner which perpetuated the corner location.



I hereby certify that this land surveying document was prepared and the related survey work was performed by me or under my direct personal supervision and that I am a duly licensed Land Surveyor under the laws of the State of Iowa.

*Richard M. Kordick* 10/26/2006  
 Richard M. Kordick date  
 License number 13657  
 My license renewal date is December 31, 2007.  
 Pages or sheets covered by this seal: 1 of 1

LEGEND:

- Section Corner as noted
- Power Pole
- Section line
- Centerline
- Existing Fence
- Recorded Dist.

Kordick Surveying  
 & Engineering  
 120 East Main, Suite D  
 Anamosa, Iowa 52205  
 (319) 462-4498

U.S. Public Land  
 Survey Corner Certificate

Project: Flat of Survey  
 Parcel No. 2006-146,  
 2006-147, and 2006-148  
 Proprietor: Mo Star Farms, Inc.

Field BK  
 06087  
 Date  
 10-26-06  
 Job No.  
 06087  
 Sheet  
 1 of 1