

2003 0952

FILED
RECORDERS OFFICE
JONES COUNTY IOWA

03 MAR -6 AM 10:26

MARIE KRUTZFIELD
RECORDER NO FEE

J.D. TJEPKES, LS. JONES COUNTY ENGINEER'S OFFICE, 19501 HWY. 64, ANAMOSA, IOWA, 52205 (319)462-3785

UNITED STATES PUBLIC LAND SURVEY CORNER CERTIFICATE

LAND SURVEY MONUMENTS SITUATED IN SECTION 36, TOWNSHIP 83
NORTH, RANGE 1 WEST OF THE 5TH P.M., JONES COUNTY, IOWA

CORNERS TO BE INDEXED

CORNER	SECTION	TOWNSHIP	RANGE
SE	36	83N	1W

OFFICE FILE NO. 83136y_030403.jpg

2-28-03 FIELD BOOK # 2002-2003 P. 38

PREVIOUSLY RECORDED IN BOOK NA, PAGE NA
MONUMENT DESCRIPTION AND HOW ESTABLISHED
FOUND 5/8" IRON PIN AT CL Y-24 & 160th ST. NO TIES RECORDED IN JONES COUNTY RECORDERS OFFICE.
FOUND "X" NAILS AT LOCATIONS INDICATED. SET SURVEY DISKS AT LOCATIONS OF NAILS. SE CORNER SECTION 36 T83N R1W.

CORNERS TO BE INDEXED

CORNER	SECTION	TOWNSHIP	RANGE
E1/4	36	83N	1W

OFFICE FILE NO. 83136o_030403.jpg

2-28-03 FIELD BOOK 2002-2003 P. 42

PREVIOUSLY RECORDED IN BOOK NA, PAGE NA
MONUMENT DESCRIPTION AND HOW ESTABLISHED
NO TIES RECORDED IN JONES COUNTY. FOUND CUT "X" 1.48' WEST OF CENTER LINE IN P.C.PVT. IN LOCATION OF E1/4 SEC.36, ALSO FOUND SURVEY BUTTONS AT LOCATIONS INDICATED.
SET 5/8"x24" REBAR W/CAP #14807, AT LOCATION OF "X". RETIED AS INDICATED. E1/4 SECTION 36 T83N R1W

CORNERS TO BE INDEXED

CORNER	SECTION	TOWNSHIP	RANGE
NE	36	83N	1W

OFFICE FILE NO. 83136e_030403.jpg

2-28-03 FIELD BOOK 2002-2003 P. 42

PREVIOUSLY RECORDED IN BOOK NA, PAGE NA
MONUMENT DESCRIPTION AND HOW ESTABLISHED
FOUND CUT "X" 5.53' WEST OF CENTER LINE Y-24 IN P.C. PVT. PER LS 9019 (McGUIRE) TIES DATED 1990.
SET 5/8"x24" REBAR W/CAP #14807 AT "X". RETIED AS INDICATED. NE CORNER SECTION 36 T83N R1W.

CORNERS TO BE INDEXED

CORNER	SECTION	TOWNSHIP	RANGE
	36	83N	1W

OFFICE FILE NO.

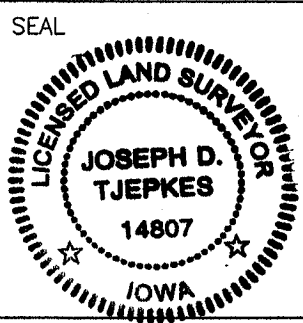
2-28-03 FIELD BOOK 2002-2003 P. 42

PREVIOUSLY RECORDED IN BOOK NA, PAGE NA
MONUMENT DESCRIPTION AND HOW ESTABLISHED

I hereby declare that this plat, survey or report was made by me or under my direct personal supervision and that I am a duly registered Land Surveyor under the laws of the State of Iowa.

Signed: *[Signature]* 3-4-03

Joseph D. Tjepkes L.S. Iowa Reg. No. 14807
My Registration Renewal Date is December 31, 2004



J.D. TJEPKES LS 14807
JONES COUNTY
ENGINEER'S OFFICE

19501 HWY. 64,
ANAMOSA, IOWA,
52205 (319)462-3785

UNITED STATES PUBLIC LAND SURVEY CORNER CERTIFICATE

OF

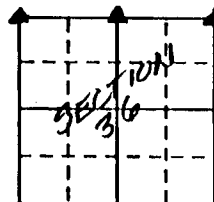
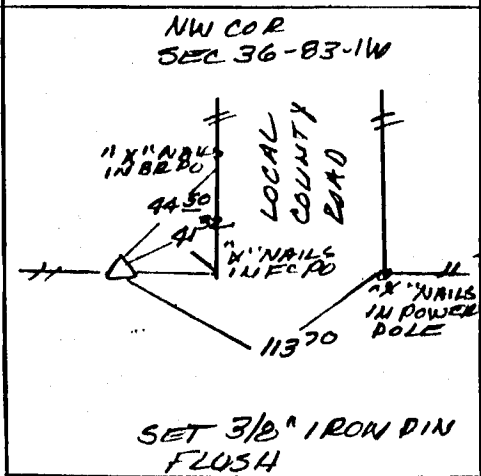
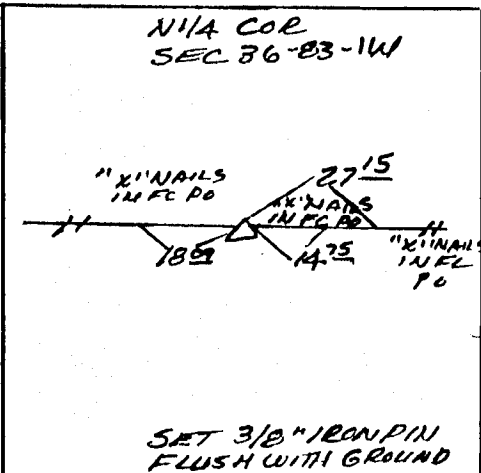
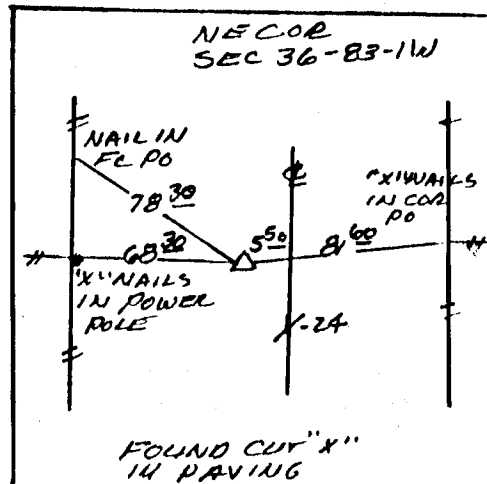
Land Survey Monuments situated in Section 36, Township 83 NORTH, Range 1 WEST, of the Fifth Principal Meridian, JONES County, Iowa.
 Previously recorded in DOES NOT APPLY in County Recorder's Office.
(book, page, document number, etc.)

(Show reason for preparing this certificate, the evidence and detailed procedures used in establishing the corner positions and monumentation found or placed.)

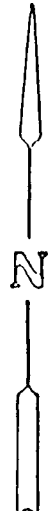
Monument Description and Remarks: FOUND CUT "X" IN PAVING AT THE LOCATION OF THE NORTHEAST CORNER. SET THE NORTHWEST CORNER USING ORIGINAL GOVERNMENT SURVEY DISTANCE AND FENCE LINE EVIDENCE. SET THE NORTH QUARTER CORNER USING THE FENCE LINE EVIDENCE

PLAN - VIEW

(Show a minimum of three reference ties to durable physical objects, relevant monuments and physical conditions that will enable recovery of the corner.)



OXFORD
 N 1/4 SEC 36
 ON CARD
 12-6-90



OXFORD
 NE COR SEC 35
 ON CARD
 12-6-90

OXFORD NE COR SEC 36
 ON CARD 12-6-90
 M.S

I hereby certify that the survey work was completed and this certificate was prepared by me or under my direct personal supervision and that I am a duly registered land surveyor under the laws of the state of Iowa.

Signature: Larry R. McGuire
 Name typed or printed: LARRY R. MCGUIRE

Date: 11/28/90 Reg. No. 9019

Corners	List Corners to be Indexed		
	Section	Twp	Range
NE	36	83N	1W
NW	36	83N	1W
NW	36	83N	1W



SEAL