

FEEBOOK: 2007 2926

REC FEES: \$ 7.00

9/12/2007 9:48 AM

PAGES: 1

Marie Krutzfield, Recorder
Jones County, Iowa

PREPARED BY: EGGER ENGINEERING AND LAND SURVEYING, P.C., 2395 TECH DR, STE 2 BETTENDORE, IA 52722

UNITED STATES PUBLIC LAND SURVEY CORNER CERTIFICATE
OF

Land Survey Monument situated in Section 3, Township 83N, Range 1W, of the Fifth Principal Meridian,
JONES County, Iowa. Previously recorded in NOT APPLICABLE in County Recorder's Office.

(Book, Page, Document Number, etc.)

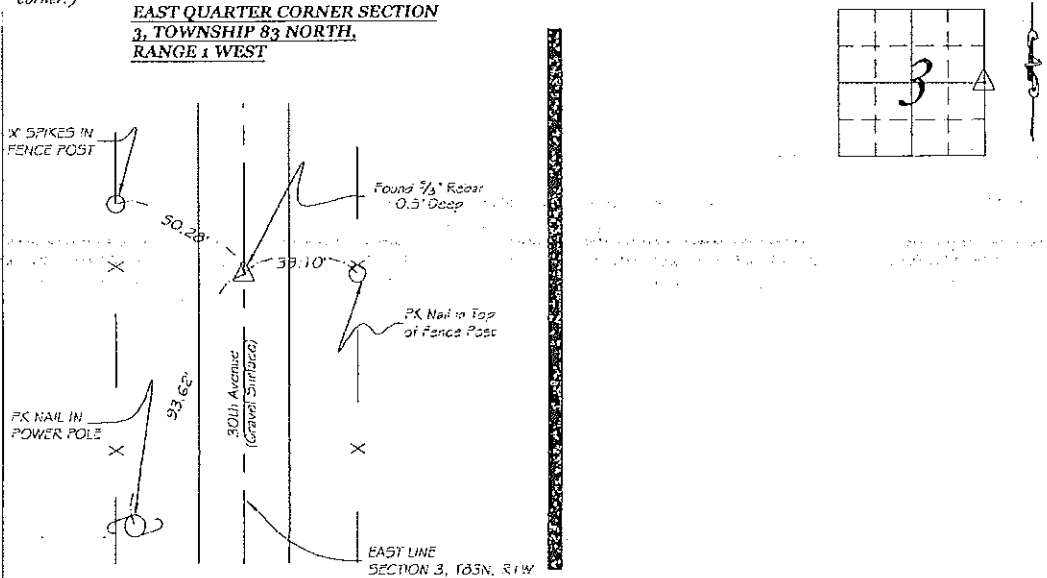
(Show reason for preparin this certificate, the evidence and detailed procedures used in establishing the corner positions and monumentation found or placed.)

Monument Description and Remarks: THE EAST QUARTER CORNER OF SECTION 3 IS A FOUND 5/8" REBAR 0.5' DEEP.

PLAN - VIEW

(Show a minimum of three reference ties to durable physical objects, relevant monuments and physical conditions that will enable recovery of the corner.)

**EAST QUARTER CORNER SECTION
3, TOWNSHIP 83 NORTH,
RANGE 1 WEST**



I hereby certify that the survey work was completed and this certificate was prepared by me or under my direct personal supervision and that I am a duly registered land surveyor under the laws of the state of Iowa.

Signature: James L. Egger
James L. Egger P.E. & L.S.

Dated: Sept. 10, 2007 Reg. No. 7983

SEAL

List Corners to be Indexed			
Corners	Section	Twp.	Range
E 1/4 CORNER	3	83N	1W

