

Oxford

97 98 1805

FILED
RECORDERS OFFICE
JONES COUNTY IOWA

97 DEC 15 AM 10:19

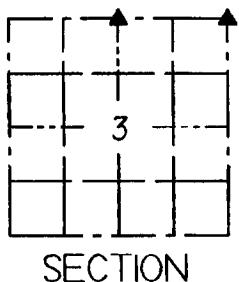
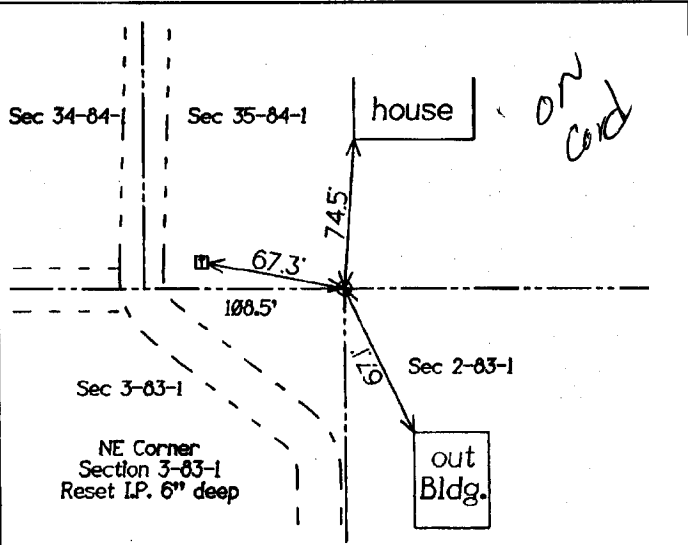
LINDA J. BENDIXEN
RECORDER *LJB*

United States Public Land Survey Corner Certificate

Land survey corner in Section 3 Township 83 North.
Range 1 West of the 5th Principal Meridian. Jones
County, Iowa

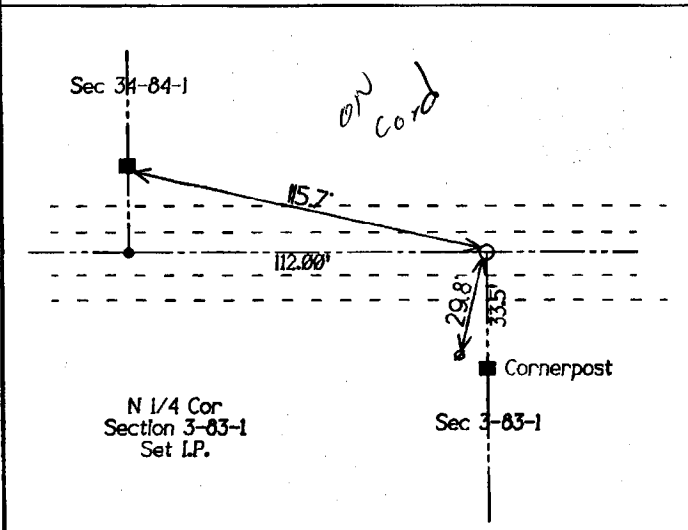


NO SCALE



LEGEND

- IRON PIN OR PIPE FOUND
- I. PIN SET CAPPED
- CORNER POST
- ▲ CONGRESSIONAL CORNER
- ⊗ POWERPOLE
- ⊞ TELE JCT BOX
- TREE



Certification

I hereby certify that this plat and survey was made by me or under my direct supervision and that I am a duly Registered Land Surveyor under the laws of the State of Iowa.

Harold E. Dillon 12/2/97

Harold E. Dillon Iowa Reg. 6581 My certification expires 12/31/98



Dillon Surveying Co.
Coralville, Ia 52241
(319) 351-5547

SECTION CORNER CERTIFICATE

OF
 LAND SURVEY MONUMENTS SITUATED IN SECTION 34, TOWNSHIP 84 NORTH,
 RANGE 1 WEST, OF THE FIFTH PRINCIPAL MERIDIAN, JONES, COUNTY, IOWA.

PREVIOUSLY RECORDED IN BOOK _____ AT PAGE _____.

FOR RECORDER'S USE

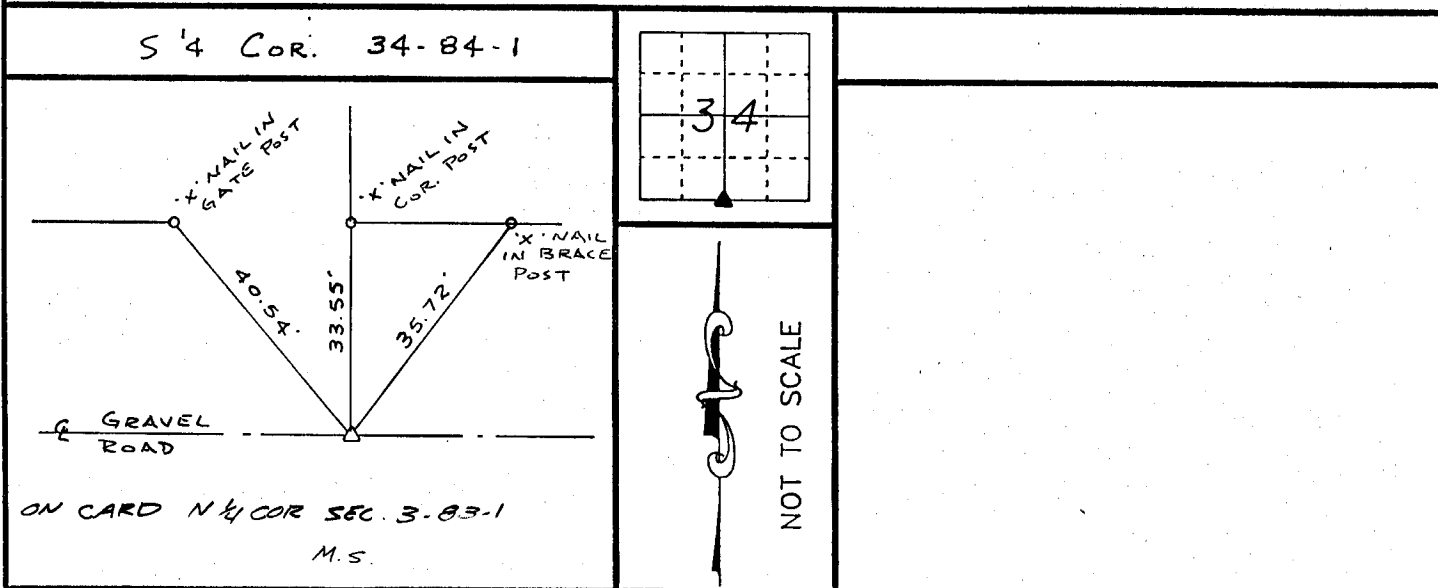
REASON FOR PREPARING CERTIFICATE:

- A) THERE IS NO CERTIFICATE FOR THE CORNER ON FILE WITH THE RECORDER OF THE COUNTY IN WHICH THE CORNER IS LOCATED.
- B) CORNER POSITION DIFFERS FROM THAT SHOWN IN THE PUBLIC RECORDS OF THE COUNTY IN WHICH THE CORNER IS LOCATED.
- C) THE CORNER MONUMENT HAS BEEN REPLACED OR MODIFIED.
- D) THE REFERENCE TIES REFERRED TO IN AN EXISTING PUBLIC RECORD ARE INCORRECT.

MONUMENT DESCRIPTION AND REMARKS :

S 1/4 CORNER SECTION 34-84-1 FOUND 5/8" PIN & GRAVEL ROAD 8" DEEP

RECOVERY TIE DRAWING



I, GLEN D. MEISNER, CERTIFY THAT THE CORNER LOCATION(S) SHOWN ON THIS RECORD WERE DETERMINED BY ME OR UNDER MY DIRECTION AND CONTROL AND THAT THIS U.S. PUBLIC LAND SURVEY MONUMENT RECORD IS CORRECT AND COMPLETE TO THE BEST OF MY KNOWLEDGE AND BELIEF.



Glen D. Meisner 1-30-92
 GLEN D. MEISNER L.S. NO 8165 DATE

| | | | |
|--------|---|---|--|
| DZP/MT | GOVERNMENT CORNER 5/8" TIE PIN SET CENTERLINE EXISTING FENCE LINE R.O.W. LINE | SHEET TITLE: U.S. PUBLIC LAND SURVEY RECORD PROJECT TITLE: CINDY MEYER | HALL AND HALL ENGINEERS, INC. 226 29TH STREET DRIVE S.E. CEDAR RAPIDS, IOWA 52403 319-362-9548 |
| | D NW R.W.B. X IC G.D.M. A PD | DATE 6-28-91 SCALE NONE | |