

2005 1177

FILED
RECORDERS OFFICE
JONES COUNTY IOWA

05 APR -6 PM 4: 15

MARIE KRUTZFIELD
RECORDER 700R

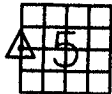
J.D. TJEPKES, LS. 14807, 23428 RIDGE ROAD, ANAMOSA, IOWA, 52205 (319-462-6067)

UNITED STATES PUBLIC LAND SURVEY CORNER CERTIFICATE

LAND SURVEY MONUMENTS SITUATED IN SECTION 5, TOWNSHIP 83
NORTH, RANGE 1 WEST OF THE 5TH P.M., JONES COUNTY, IOWA

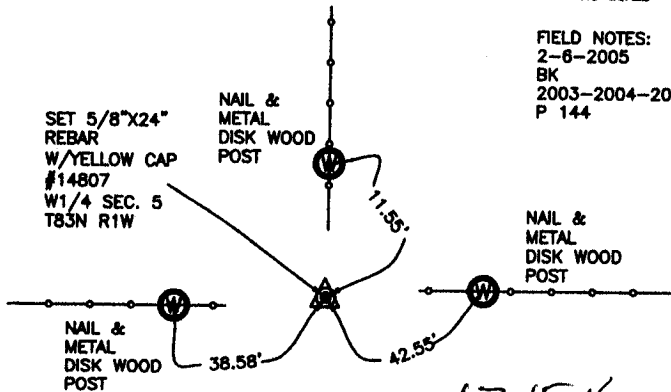
CORNERS TO BE INDEXED

CORNER SECTION TOWNSHIP RANGE
W1/4 5 83N 1W
OFFICE FILE NO. _____



NO SCALE

FIELD NOTES:
2-6-2005
BK
2003-2004-2005
P 144

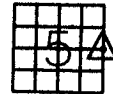


1715 v
831060-040505-716

PREVIOUSLY RECORDED IN BOOK NA, PAGE NA
MONUMENT DESCRIPTION AND HOW ESTABLISHED _____
PER PHYSICAL EVIDENCE AT FENCE CORNERS. SET 5/8"x24"
REBAR W/YELLOW CAP #14807. TIES AS INDICATED FOR W1/4
SECTION 5 T83N R1W. NOTE: SNOW COVER AROUND CORNER.

CORNERS TO BE INDEXED

CORNER SECTION TOWNSHIP RANGE
E1/4 5 83N 1W
OFFICE FILE NO. _____

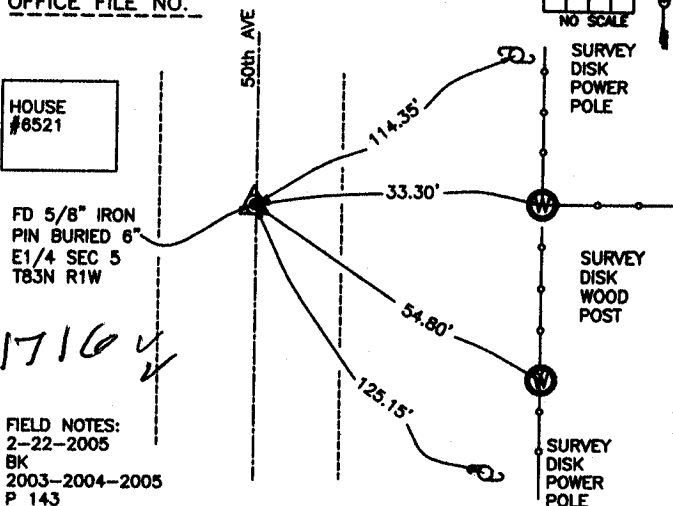


NO SCALE

HOUSE
#6521

FD 5/8" IRON
PIN BURIED 6"
E1/4 SEC 5
T83N R1W

FIELD NOTES:
2-22-2005
BK
2003-2004-2005
P 143



1716 v

PREVIOUSLY RECORDED IN BOOK NA, PAGE NA
MONUMENT DESCRIPTION AND HOW ESTABLISHED _____
PER PHYSICAL EVIDENCE, CENTER LINE ROAD AND FENCE LINE
GOING EAST, FOUND 5/8" IRON PIN BURIED 6". TIES AS
INDICATED. E1/4 SECTION 5 T83N R1W.

831050-040505-716

CORNERS TO BE INDEXED

CORNER SECTION TOWNSHIP RANGE
OFFICE FILE NO. _____



NO SCALE

CORNERS TO BE INDEXED

CORNER SECTION TOWNSHIP RANGE
OFFICE FILE NO. _____



NO SCALE

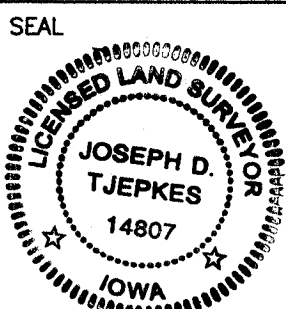
PREVIOUSLY RECORDED IN BOOK _____, PAGE _____
MONUMENT DESCRIPTION AND HOW ESTABLISHED _____

PREVIOUSLY RECORDED IN BOOK _____, PAGE _____
MONUMENT DESCRIPTION AND HOW ESTABLISHED _____

I hereby declare that this plat, survey or report was made by me or under my direct personal supervision and that I am a duly registered Land Surveyor under the laws of the State of Iowa.

Signed: *[Signature]* 4-25-05

Joseph D. Tjepkes L.S. Iowa Reg. No. 14807
My Registration Renewal Date is December 31, 2006



J.D. TJEPKES LS 14807
23428 RIDGE ROAD
ANAMOSA, IOWA, 52205
(319-462-3785)