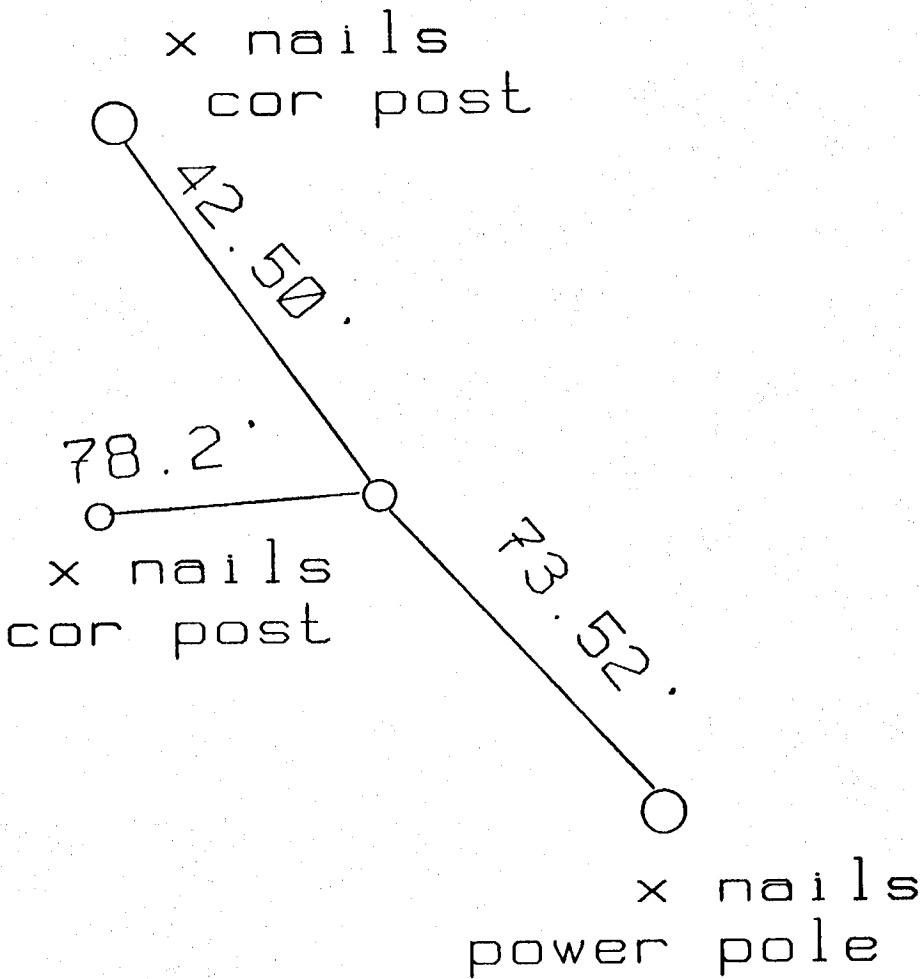
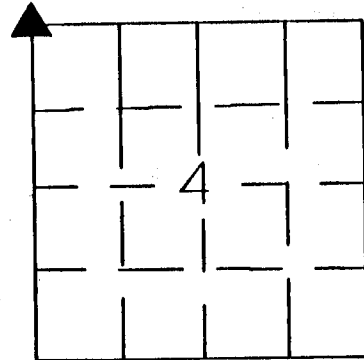


# UNITED STATES PUBLIC LAND SURVEY CORNER CERTIFICATE

LAND SURVEY MONUMENT LOCATED IN SECTION 4 TOWNSHIP 83  
 NORTH, RANGE 1W OF THE 5TH P.M. JONES COUNTY, IOWA  
 PREVIOUSLY RECORDED IN BOOK NA ON PAGE NA.



OXFORD  
 N.E. SEC 5  
 ON. CARD  
 12-6-90  
 M.S



SECTION

MONUMENT DESCRIPTION AND NARRATIVE NW COR SEC 4  
SET 5/8" X 30" REROD 6" DEEP EVIDENCE OF  
POSSESSION

I HEREBY CERTIFY THAT THE HEREON DEPICTED SURVEY TIE WORK WAS  
 COMPLETED BY ME OR UNDER MY DIRECT PERSONAL SUPERVISION AND  
 THAT I AM A DULY REGISTERED LAND SURVEYOR UNDER THE LAWS OF  
 THE STATE OF IOWA.

Harold E. Dillon 11/11/90  
 HAROLD E. DILLON REG# 6581 DATE

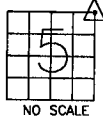


# UNITED STATES PUBLIC LAND SURVEY CORNER CERTIFICATE

LAND SURVEY MONUMENTS SITUATED IN SECTION 5, TOWNSHIP 83  
NORTH, RANGE 1 WEST OF THE 5TH P.M., JONES COUNTY, IOWA

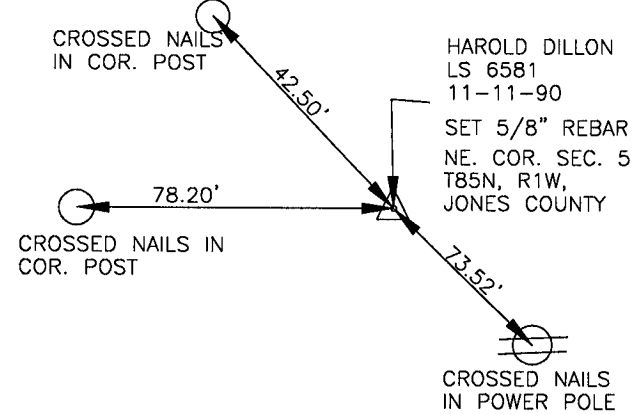
**CORNERS TO BE INDEXED**

CORNER SECTION TOWNSHIP RANGE  
N.E. 5 83N 1W



OFFICE FILE NO.

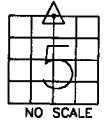
83105e\_022301



PREVIOUSLY RECORDED IN BOOK N/A, PAGE N/A  
MONUMENT DESCRIPTION AND HOW ESTABLISHED  
NO CERTIFICATION ON THIS CORNER. TIES TAKEN FROM  
SMALL CARD FILE.

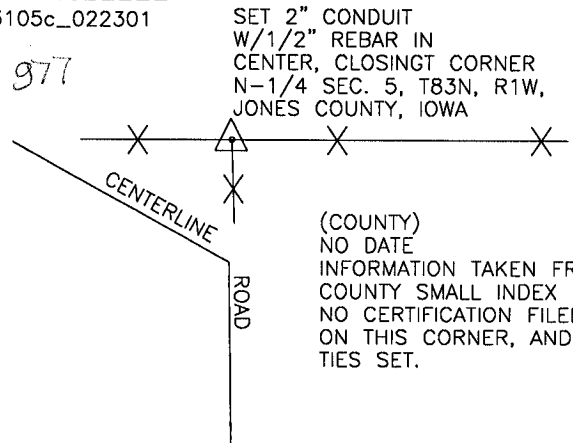
**CORNERS TO BE INDEXED**

CORNER SECTION TOWNSHIP RANGE  
N-1/4 5 83N 1W



OFFICE FILE NO.

83105c\_022301

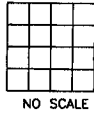


(COUNTY)  
NO DATE  
INFORMATION TAKEN FROM  
COUNTY SMALL INDEX CARD.  
NO CERTIFICATION FILED  
ON THIS CORNER, AND NO  
TIES SET.

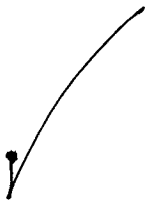
PREVIOUSLY RECORDED IN BOOK N/A, PAGE N/A  
MONUMENT DESCRIPTION AND HOW ESTABLISHED SET CORNER  
AS INDICATED IN LINE WITH FENCE AND ROAD SOUTH, IN LINE WITH FENCE  
TO EAST AND AGAINST WEST SIDE OF OLD CORNER POST, FENCES RUN  
EAST, WEST AND SOUTH

**CORNERS TO BE INDEXED**

CORNER SECTION TOWNSHIP RANGE



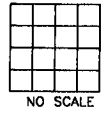
OFFICE FILE NO.



PREVIOUSLY RECORDED IN BOOK \_\_\_\_\_, PAGE \_\_\_\_\_  
MONUMENT DESCRIPTION AND HOW ESTABLISHED \_\_\_\_\_

**CORNERS TO BE INDEXED**

CORNER SECTION TOWNSHIP RANGE



OFFICE FILE NO.

PREVIOUSLY RECORDED IN BOOK \_\_\_\_\_, PAGE \_\_\_\_\_  
MONUMENT DESCRIPTION AND HOW ESTABLISHED \_\_\_\_\_

~~I hereby declare that this plat, survey or report was made by me or under my direct personal supervision and that I am a duly registered Land Surveyor under the laws of the State of Iowa.~~

Signed:

~~Joseph D. Tjepkes L.S. Iowa Reg. No. 14807  
My Registration Renewal Date is December 31, 2002~~

SEAL

J.D. TJEPKES LS 14807  
JONES COUNTY  
ENGINEER'S OFFICE

19501 HWY. 64,  
ANAMOSA, IOWA,  
52205 (319)462-3785