

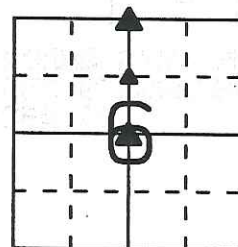
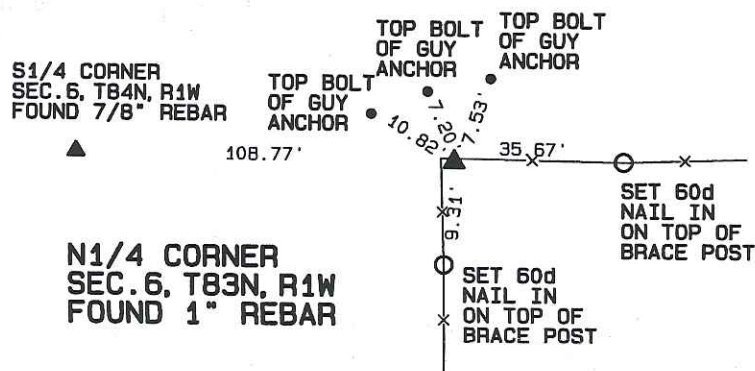
Prepared by: SCHNEIDER Land Surveying and Planning, Inc. P.O. Box 128 Farley, Iowa 52046 563-744-3631

**UNITED STATES PUBLIC LAND SURVEY CORNER CERTIFICATE OF**

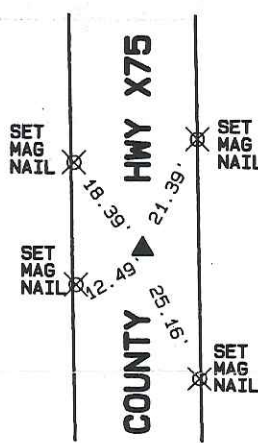
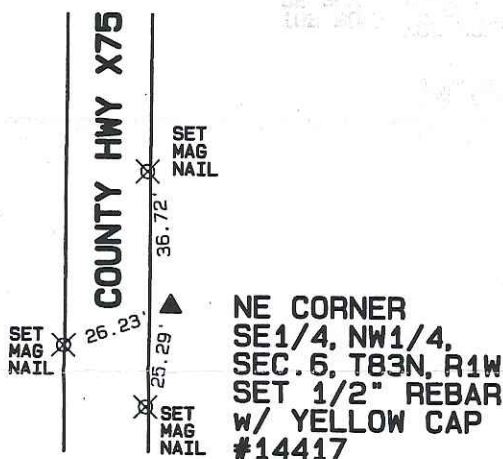
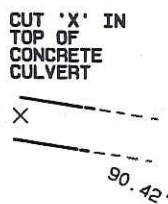
Land Survey Monuments situated in Section 6, Township 83 North, Range 1 West of the Fifth Principal Meridian, Jones County, Iowa.  
 Previously recorded (NONE OF RECORD)  
(BOOK, PAGE / INST. NO. / CABINET, SLIDE)

Monument Description and Remarks: A 1" IRON BAR WAS FOUND AT THE N1/4 CORNER OF SECTION 6, T83N, R1W AS ILLUSTRATED IN AN UNRECORDED CORNER CERTIFICATE FOUND IN THE JONES COUNTY ENGINEER'S OFFICE. THE NE CORNER OF THE SE1/4 OF THE NW1/4 OF SECTION 6, T83N, R1W WAS ESTABLISHED ON A LINE FROM THE CENTER TO THE N1/4 CORNER OF SAID SECTION 6 AT A PRORATED LOCATION BASED ON DISTANCES RECORDED ON AN EASEMENT FOR PUBLIC HIGHWAY FILED IN BOOK 122, PAGE 679. A 5/8" REBAR WAS FOUND AT THE CENTER OF SECTION 6, T83N, R1W AS ILLUSTRATED IN AN UNRECORDED CORNER CERTIFICATE FOUND IN THE JONES COUNTY ENGINEER'S OFFICE.

**PLAN - VIEW**



**CENTER  
 SEC. 6, T83N, R1W  
 FOUND 5/8" REBAR**



I hereby certify that this land surveying document was prepared and the related survey work was performed by me or under my direct personal supervision and that I am a duly licensed Land Surveyor under the laws of the State of Iowa.

*David P. Schneider* 3/14/2016  
 David P. Schneider P.L.S. #14417 Date:  
 My license renewal date is December 31, 2017.

Pages or sheets covered by this seal: THIS SHEET ONLY

**List Corners to be Indexed**

Corners	Section	Twp	Range
N1/4 CORNER	6	83N	1W
NE CORNER SE1/4, NW1/4	6	83N	1W
CENTER	6	83N	1W

**SCHNEIDER**  
 Land Surveying & Planning, Inc.

P.O. Box 128 Farley, Iowa 52046  
 Ph. #563-744-3631 Fax#563-744-3629



# UNITED STATES PUBLIC LAND SURVEY CORNER CERTIFICATE

LAND SURVEY MONUMENTS SITUATED IN SECTION 6, TOWNSHIP 83  
NORTH, RANGE 1 WEST OF THE 5TH P.M., JONES COUNTY, IOWA

**CORNERS TO BE INDEXED**

CORNER N.E.	SECTION 6	TOWNSHIP 83N	RANGE 1W
----------------	--------------	-----------------	-------------

OFFICE FILE NO. 373

83106e\_022301

FD. BRUMMER PIN AND CAP  
LS 6503 AT S.E. CORNER  
SEC. 31, T84N, R1W

FOUND 2" CONDUIT AT  
NORTHEAST CORNER OF  
SECTION 6, T83N, R1W,  
JONES COUNTY, IOWA

(COUNTY)  
POWELL-STONEKING 3-10-94  
NO CERTIFICATION ON THIS CORNER

REDHEAD  
IN BRACE  
POST

PREVIOUSLY RECORDED IN BOOK N/A, PAGE N/A  
MONUMENT DESCRIPTION AND HOW ESTABLISHED FOUND 2"  
CONDUIT AT NORTHEAST CORNER SECTION 6, TOWNSHIP 83 NORTH, RANGE  
1 WEST, JONES COUNTY, IOWA. NO CERTIFICATION ON THIS CORNER.  
NOTE TIE TO BRUMMER PIN AT S.E. COR. SEC. 31, T84N, R1W. THIS COR.  
FILED ON BY HAROLD DILLON CALLS FOR DIFFERENT MONUMENT.

**CORNERS TO BE INDEXED**

CORNER N-1/4	SECTION 6	TOWNSHIP 83N	RANGE 1W
-----------------	--------------	-----------------	-------------

OFFICE FILE NO. 973

83106c\_022301

S1/4 CORNER  
SECTION 31, T84N,  
R1W, JONES COUNTY  
(CORNER NOT IDENTIFIED)

FOUND BENCHMARK

FOUND 1"X48" HEXAGONAL IRON  
PIN FLUSH WITH GROUND, WITH  
STEEL FENCE POST ALONGSIDE,  
NORTH 1/4 COR. SECTION 6,  
T83N, R1W, JONES COUNTY, IOWA

(COUNTY)  
(POSTEL-BARTLE-TARBOX)  
10-10-80

(NO CERTIFICATION ON THIS CORNER)

PREVIOUSLY RECORDED IN BOOK N/A, PAGE N/A  
MONUMENT DESCRIPTION AND HOW ESTABLISHED FOUND 1"X48"  
HEXAGONAL IRON PIN AS INDICATED. FIELD NOTES DESCRIBED MONUMENT AS  
N-1/4 COR. SEC. 6, T83N, R1W, JONES COUNTY, IOWA. NO TIES SET. SECTION  
CORNER TIED TO JONES COUNTY PROJECT FM-53(1)-55-53, PAGE 68  
STAKING NOTES, STATION 1095+31.38

**CORNERS TO BE INDEXED**

CORNER	SECTION	TOWNSHIP	RANGE
--------	---------	----------	-------

OFFICE FILE NO.

PREVIOUSLY RECORDED IN BOOK \_\_\_\_\_, PAGE \_\_\_\_\_  
MONUMENT DESCRIPTION AND HOW ESTABLISHED \_\_\_\_\_

**CORNERS TO BE INDEXED**

CORNER CENTER	SECTION 6	TOWNSHIP 83N	RANGE 1W
------------------	--------------	-----------------	-------------

OFFICE FILE NO. 990

83106m\_022301

9-29-80  
POSTEL-BARTLE-TARBOX  
(CHECKED 8-17-82)  
(FD. IRON PIN IN SLAB)

CL COUNTY ROAD

NAIL TOP WOOD POST

NAIL TOP WOOD POST

NAIL TOP WOOD POST

NAIL TOP WOOD POST

FD. 1/2"X22" IRON PIN BURIED  
10" WHEN DOING PRELIMINARY  
SURVEY FOR PROJECT NO.  
FM-53(1)-55-53, TIED CORNER  
TO STA. 69+06.42

NOTE:  
ALL DISTANCES SLOPE MEASURED.

REF.-BK#276  
STAKING NOTES P-263

(NO CERTIFICATION ON THIS CORNER)

PREVIOUSLY RECORDED IN BOOK N/A, PAGE N/A  
MONUMENT DESCRIPTION AND HOW ESTABLISHED FOUND CENTER  
SECTION CORNER AS INDICATED WHILE PERFORMING PRELIMINARY FOR COUNTY  
ROAD PROJECT, SET REFERENCE POINTS AND TIED OUT AS INDICATED.  
CENTER SECTION 6, TOWNSHIP 83 NORTH, RANGE 1 WEST, JONES COUNTY,  
IOWA

~~I hereby declare that this plat, survey or report was made by me or under my direct personal supervision and that I am a duly registered Land Surveyor under the laws of the State of Iowa.~~

Signed: \_\_\_\_\_

Joseph D. Tjepkes L.S. Iowa Reg. No. 14807  
My Registration Renewal Date is December 31, 2002

SEAL

J.D. TJEPKES LS 14807  
JONES COUNTY  
ENGINEER'S OFFICE

19501 HWY. 64,  
ANAMOSA, IOWA,  
52205 (319)462-3785

*NOT A CERTIFICATION*

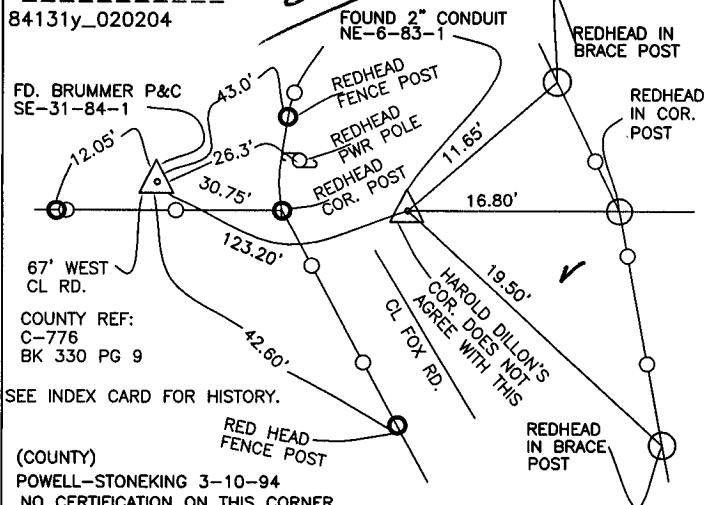
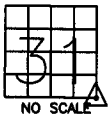
JONES COUNTY ENGINEER'S OFFICE, 19501 HWY. 64, ANAMOSA, IOWA, 52205 (319)462-3785

# UNITED STATES PUBLIC LAND SURVEY CORNER CERTIFICATE

LAND SURVEY MONUMENTS SITUATED IN SECTION 31, TOWNSHIP 84  
NORTH, RANGE 1 WEST OF THE 5TH P.M., JONES COUNTY, IOWA

### CORNERS TO BE INDEXED

CORNER SECTION TOWNSHIP RANGE  
S.E. 31 84N 1W  
OFFICE FILE NO.



84131y\_020204

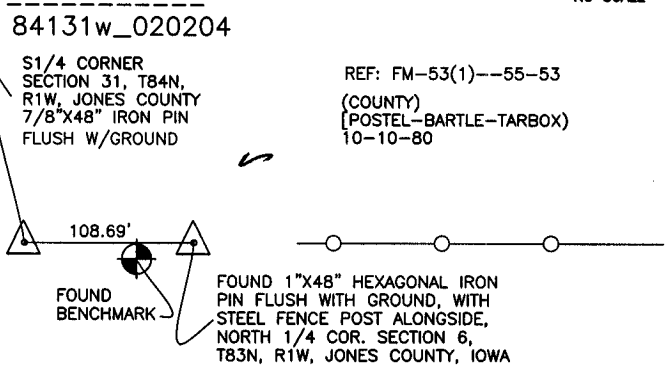
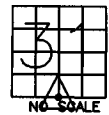
SEE INDEX CARD FOR HISTORY.

(COUNTY) POWELL-STONEKING 3-10-94  
NO CERTIFICATION ON THIS CORNER

PREVIOUSLY RECORDED IN BOOK N/A, PAGE N/A  
MONUMENT DESCRIPTION AND HOW ESTABLISHED FOUND  
BRUMMER PIN & CAP, LS 6503 SOUTHEAST CORNER SECTION 31, TOWNSHIP 84 NORTH, RANGE 1 WEST OF 5TH PRINCIPAL MERIDIAN, JONES COUNTY, IOWA.  
NOTE TIE TO 2" CONDUIT AT N.E. COR. SEC. 6, T83N, R1W.

### CORNERS TO BE INDEXED

CORNER SECTION TOWNSHIP RANGE  
S-1/4 31 84N 1W  
OFFICE FILE NO.

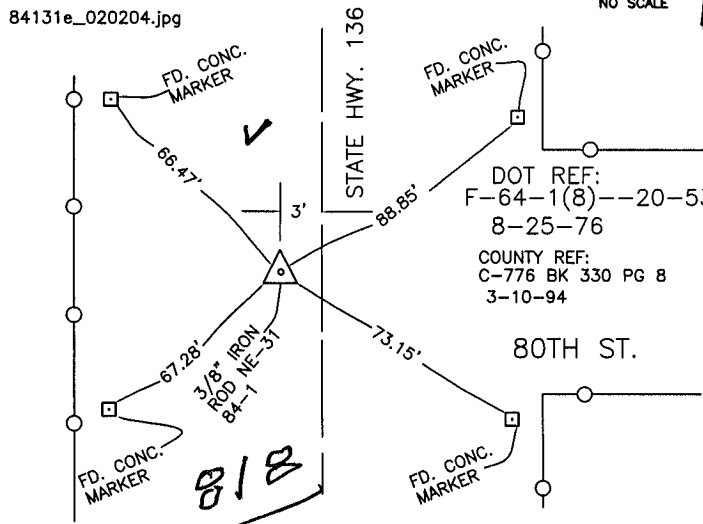
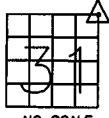


(NO CERTIFICATION ON THIS CORNER)

PREVIOUSLY RECORDED IN BOOK N/A, PAGE N/A  
MONUMENT DESCRIPTION AND HOW ESTABLISHED FOUND 1"x48" HEXAGONAL IRON PIN AS INDICATED. FIELD NOTES DESCRIBED MONUMENT AS S-1/4 COR. SEC. 31, T84N, R1W, JONES COUNTY, IOWA. NO TIES SET. SECTION CORNER TIED TO JONES COUNTY PROJECT FM-53(1)-55-53, PAGE 68 STAKING NOTES, STATION 1095+31.38

### CORNERS TO BE INDEXED

CORNER SECTION TOWNSHIP RANGE  
NORHEAST 31 84N 1W  
OFFICE FILE NO.

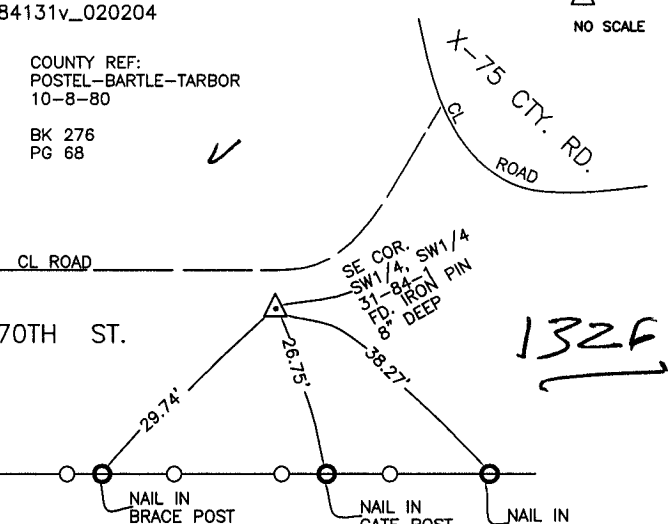
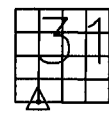


84131e\_020204.jpg

PREVIOUSLY RECORDED IN BOOK \_\_\_\_\_, PAGE \_\_\_\_\_  
MONUMENT DESCRIPTION AND HOW ESTABLISHED FOUND  
3/8" IRON ROD & RETIED AS INDICATED. NORTHEAST CORNER SECTION 31, TOWNSHIP 84 NORTH, RANGE 1 WEST OF THE 5TH PRINCIPAL MERIDIAN, JONES COUNTY, IOWA. SEE INDEX CARD FOR TIES FROM DOT IN 1976. HAROLD DILLON HAS A MONUMENT FOR THIS CORNER WHICH MAY BE DIFFERENT.

### CORNERS TO BE INDEXED

CORNER SECTION TOWNSHIP RANGE  
N.E. 31 84N 1W  
OFFICE FILE NO.



PREVIOUSLY RECORDED IN BOOK \_\_\_\_\_, PAGE \_\_\_\_\_  
MONUMENT DESCRIPTION AND HOW ESTABLISHED FOUND  
IRON PIN 8" DOWN. SET REFERENCE POINTS AS INDICATED. SOUTHWEST CORNER, SOUTHWEST QUARTER, SECTION 31, TOWNSHIP 84 NORTH, RANGE 1 WEST OF THE 5TH PRINCIPAL MERIDIAN, JONES COUNTY, IOWA.

~~I hereby declare that this plat, survey or report was made by me or under my direct personal supervision and that I am a duly registered Land Surveyor under the laws of the State of Iowa.~~

Signed: \_\_\_\_\_

Joseph D. Tjepkes L.S. Iowa Reg. No. 14807  
My Registration Renewal Date is December 31, 2002

SEAL

J.D. TJEPKES LS 14807  
JONES COUNTY  
ENGINEER'S OFFICE

19501 HWY. 64,  
ANAMOSA, IOWA,  
52205 (319)462-3785

G