

MARIE KRUTZFIELD, RECORDER  
 JONES COUNTY, IOWA

Prepared by Wm. Burger Land Surveyors 510 3rd Street West Court, Worthington, Iowa Phone 563 - 855 2028

UNITED STATES PUBLIC LAND SURVEY CORNER CERTIFICATE

Land Survey Monuments situated in Section 31, Township 84N, Range 1W, of the Fifth Principal Meridian, Jones County, Iowa. Previously recorded in SEE NOTE in the Office of the County Recorder

Monument Description and Remarks:

CENTER OF SECTION - FOUND 5/8" IRON ROD W/ NO CAP

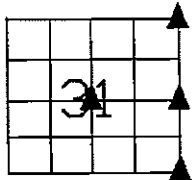
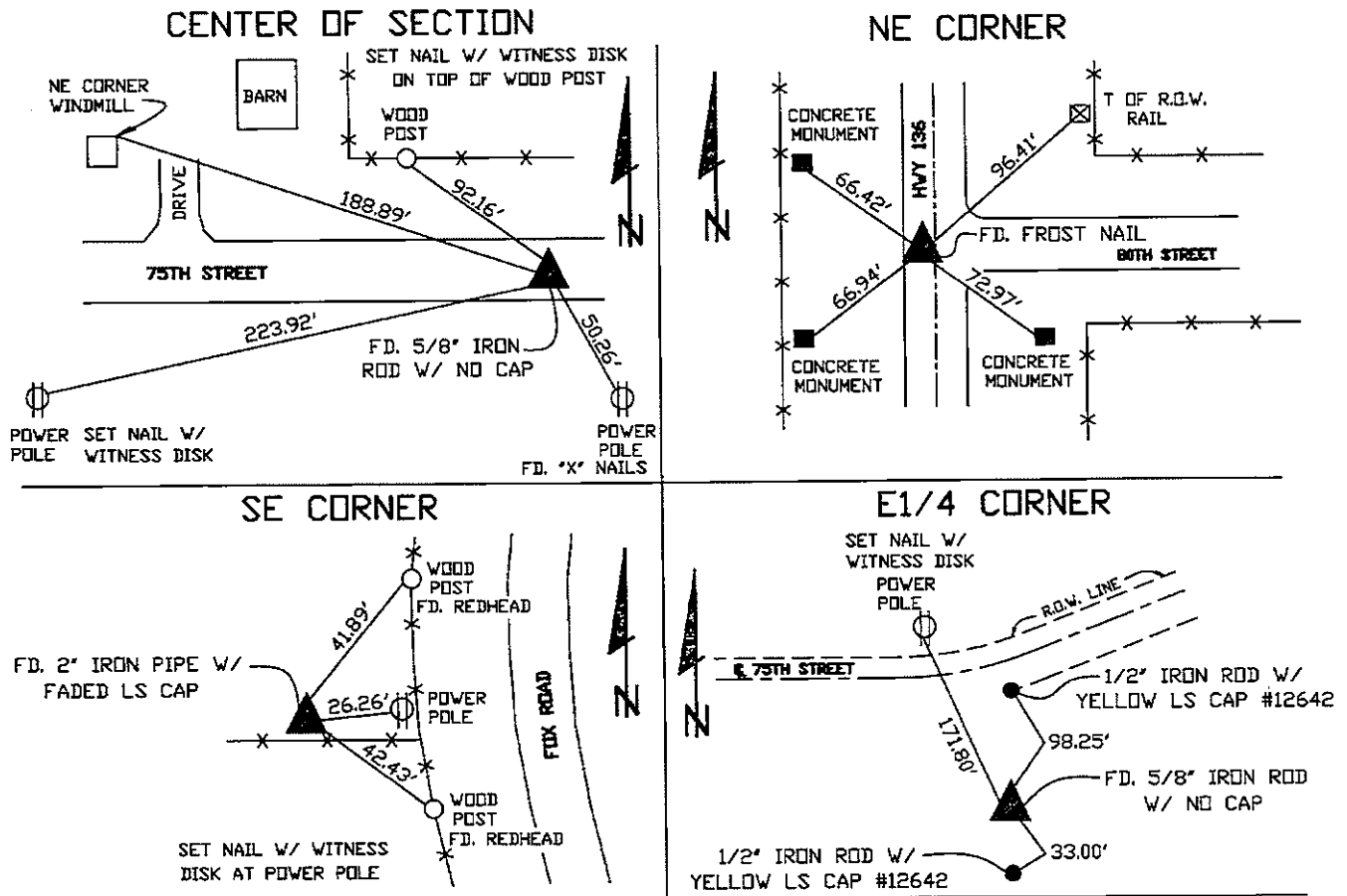
NE CORNER - FOUND FROST NAIL

SE CORNER - FOUND 2" IRON PIPE W/ FADED LS CAP

E1/4 CORNER - FOUND 5/8" IRON ROD W/ NO CAP

NOTE: THE CENTER OF SECTION WAS PREVIOUSLY RECORDED IN THE OFFICE OF THE JONES COUNTY RECORDER BOOK 370, PAGE 268  
 THE E1/4 CORNER WAS PREVIOUSLY RECORDED IN THE OFFICE OF THE JONES COUNTY RECORDER BOOK 370, PAGE 265

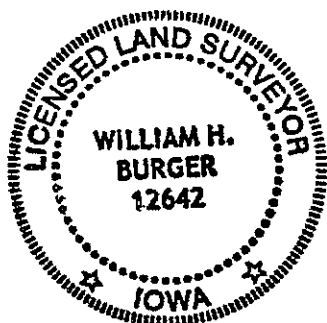
PLAN VIEW



SEC. 31 TWP. 84N RANGE 1W

CORNERS TO BE INDEXED

CENTER OF SECTION	31	84N	1W
NE CORNER	31	84N	1W
SE CORNER	31	84N	1W
E1/4 CORNER	31	84N	1W



I hereby certify that this land surveying document was prepared and related survey work was performed by me or under my direct personal supervision and that I am a duly licensed Land Surveyor under the laws of the State of Iowa.

*William H. Burger* 9/28/06  
 William H. Burger Date

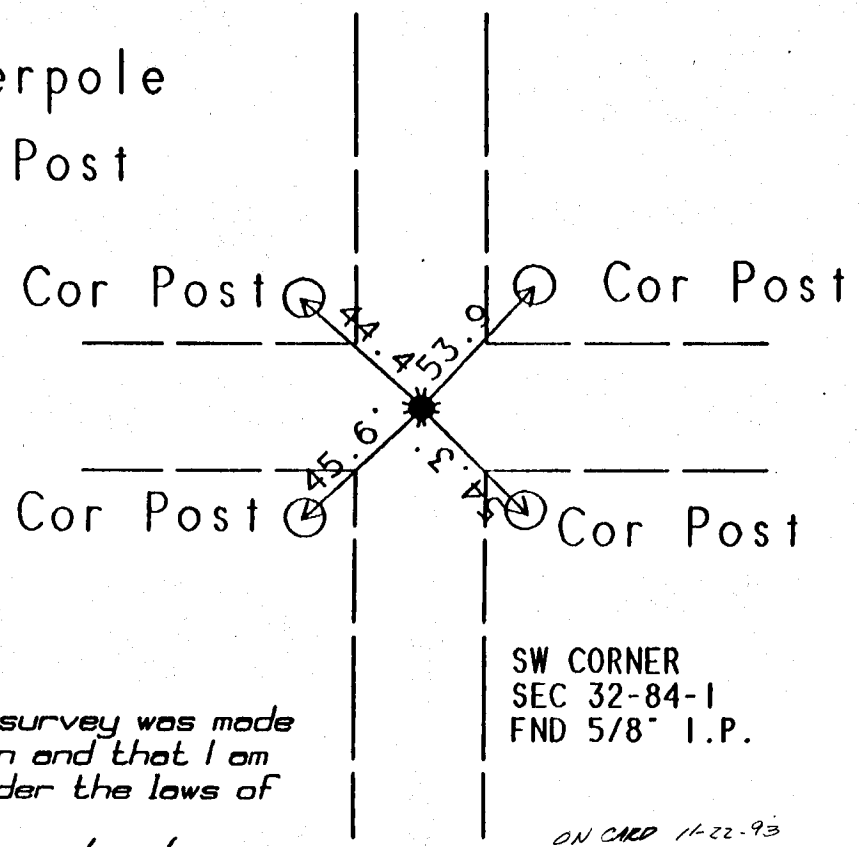
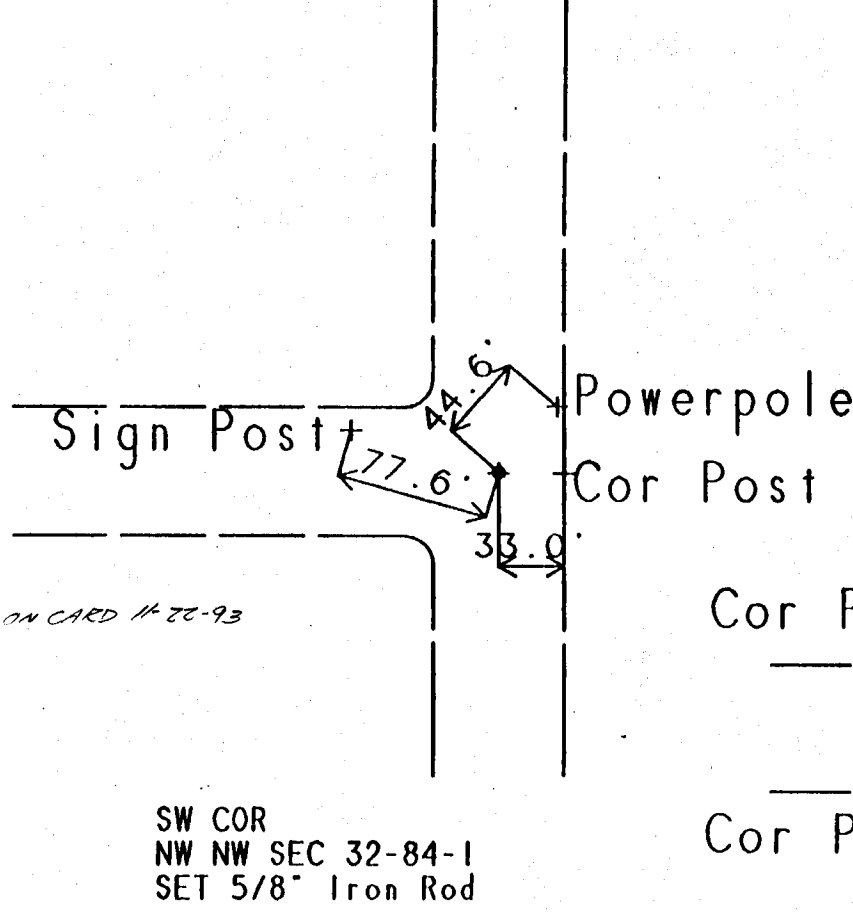
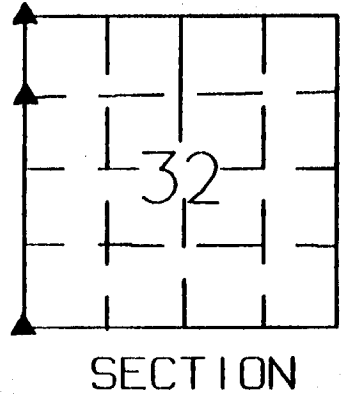
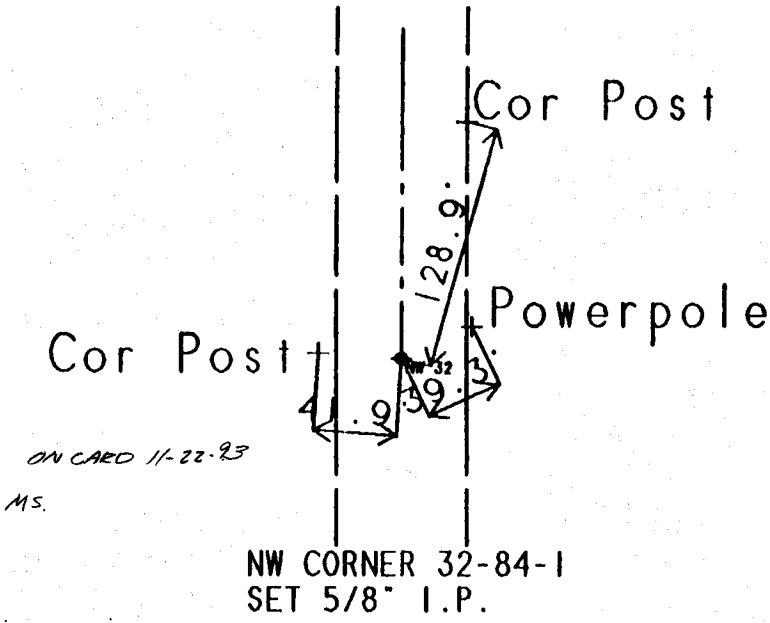
License number 12642

My license renewal date is December 31, 2006

Pages or Sheets covered by this seal: Sheet 1 of 1

# United States Public Land Survey Corner Certificate

Land survey corner in Section 32  
Township 84 N Range 1 W in  
Jones County, Iowa.



**Certification**  
I hereby certify that this plot and survey was made by me or under my direct supervision and that I am a duly Registered Land Surveyor under the laws of the State of Iowa.  
Harold E. Dillon 6/29/93  
Harold E. Dillon Reg.#6581 date

SW CORNER  
SEC 32-84-1  
FND 5/8" I.P.

ON CARD 11-22-93

*NOT A CERTIFICATION*

JONES COUNTY ENGINEER'S OFFICE, 19501 HWY. 64, ANAMOSA, IOWA, 52205 (319)462-3785

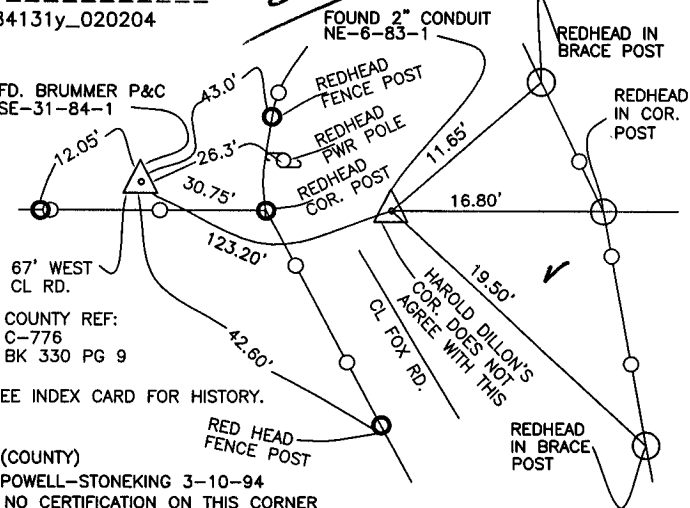
# UNITED STATES PUBLIC LAND SURVEY CORNER CERTIFICATE

LAND SURVEY MONUMENTS SITUATED IN SECTION 31, TOWNSHIP 84  
NORTH, RANGE 1 WEST OF THE 5TH P.M., JONES COUNTY, IOWA

### CORNERS TO BE INDEXED

CORNER SECTION TOWNSHIP RANGE  
S.E. 31 84N 1W  
OFFICE FILE NO.

84131y\_020204

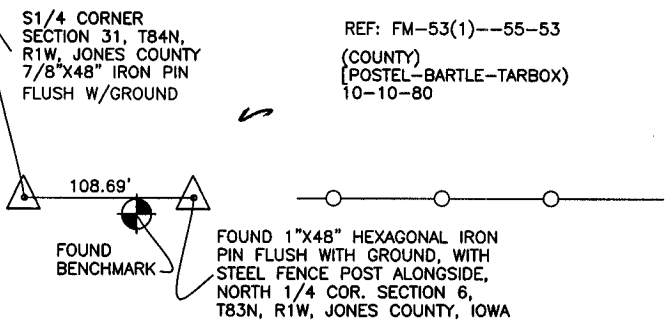


PREVIOUSLY RECORDED IN BOOK N/A, PAGE N/A  
MONUMENT DESCRIPTION AND HOW ESTABLISHED FOUND  
BRUMMER PIN & CAP, LS 6503 SOUTHEAST CORNER SECTION 31, TOWNSHIP  
84 NORTH, RANGE 1 WEST OF 5TH PRINCIPAL MERIDIAN, JONES COUNTY, IOWA.  
NOTE TIE TO 2" CONDUIT AT N.E. COR. SEC. 6, T83N, R1W.

### CORNERS TO BE INDEXED

CORNER SECTION TOWNSHIP RANGE  
S-1/4 31 84N 1W  
OFFICE FILE NO.

84131w\_020204

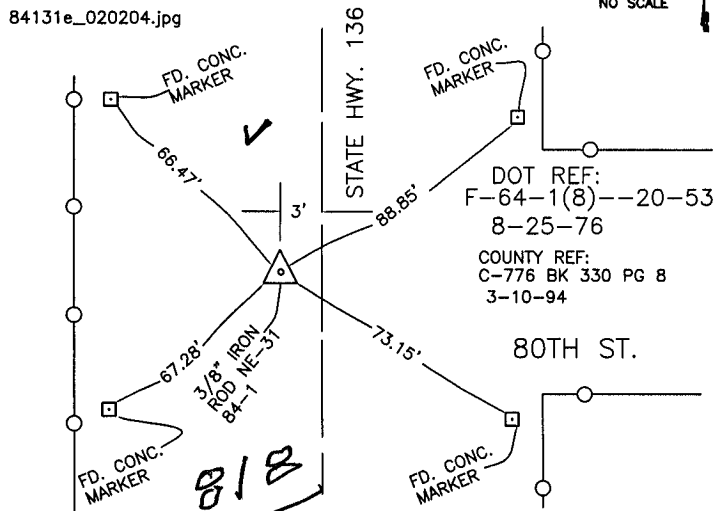


PREVIOUSLY RECORDED IN BOOK N/A, PAGE N/A  
MONUMENT DESCRIPTION AND HOW ESTABLISHED FOUND 1\"/>

### CORNERS TO BE INDEXED

CORNER SECTION TOWNSHIP RANGE  
NORHEAST 31 84N 1W  
OFFICE FILE NO.

84131e\_020204.jpg

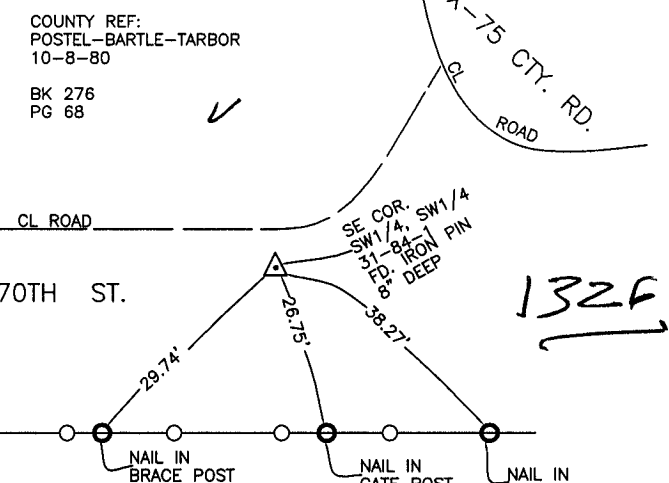


PREVIOUSLY RECORDED IN BOOK \_\_\_\_\_, PAGE \_\_\_\_\_  
MONUMENT DESCRIPTION AND HOW ESTABLISHED FOUND  
3/8" IRON ROD & RETIED AS INDICATED. NORTHEAST CORNER SECTION 31,  
TOWNSHIP 84 NORTH, RANGE 1 WEST OF THE 5TH PRINCIPAL MERIDIAN, JONES  
COUNTY, IOWA. SEE INDEX CARD FOR TIES FROM DOT IN 1976.  
HAROLD DILLON HAS A MONUMENT FOR THIS CORNER WHICH MAY BE  
DIFFERENT.

### CORNERS TO BE INDEXED

CORNER SECTION TOWNSHIP RANGE  
N.E. 31 84N 1W  
OFFICE FILE NO.

84131v\_020204



PREVIOUSLY RECORDED IN BOOK \_\_\_\_\_, PAGE \_\_\_\_\_  
MONUMENT DESCRIPTION AND HOW ESTABLISHED FOUND  
IRON PIN 8" DOWN. SET REFERENCE POINTS AS INDICATED. SOUTHWEST CORNER,  
SOUTHWEST QUARTER, SECTION 31, TOWNSHIP 84 NORTH,  
RANGE 1 WEST OF THE 5TH PRINCIPAL MERIDIAN, JONES COUNTY, IOWA.

~~I hereby declare that this plat, survey or report was made by me or under my direct personal supervision and that I am a duly registered Land Surveyor under the laws of the State of Iowa.~~

Signed: \_\_\_\_\_

Joseph D. Tjepkes L.S. Iowa Reg. No. 14807  
My Registration Renewal Date is December 31, 2002

SEAL

J.D. TJEPKES LS 14807  
JONES COUNTY  
ENGINEER'S OFFICE

19501 HWY. 64,  
ANAMOSA, IOWA,  
52205 (319)462-3785

G

# UNITED STATES PUBLIC LAND SURVEY CORNER CERTIFICATE

LAND SURVEY MONUMENTS SITUATED IN SECTION 6, TOWNSHIP 83  
NORTH, RANGE 1 WEST OF THE 5TH P.M., JONES COUNTY, IOWA

**CORNERS TO BE INDEXED**

CORNER N.E.	SECTION 6	TOWNSHIP 83N	RANGE 1W
----------------	--------------	-----------------	-------------

OFFICE FILE NO. 373

83106e\_022301

FD. BRUMMER PIN AND CAP  
LS 6503 AT S.E. CORNER  
SEC. 31, T84N, R1W

FOUND 2" CONDUIT AT  
NORTHEAST CORNER OF  
SECTION 6, T83N, R1W,  
JONES COUNTY, IOWA

(COUNTY)  
POWELL-STONEKING 3-10-94  
NO CERTIFICATION ON THIS CORNER

PREVIOUSLY RECORDED IN BOOK N/A, PAGE N/A  
MONUMENT DESCRIPTION AND HOW ESTABLISHED FOUND 2"  
CONDUIT AT NORTHEAST CORNER SECTION 6, TOWNSHIP 83 NORTH, RANGE  
1 WEST, JONES COUNTY, IOWA. NO CERTIFICATION ON THIS CORNER.  
NOTE TIE TO BRUMMER PIN AT S.E. COR. SEC. 31, T84N, R1W. THIS COR.  
FILED ON BY HAROLD DILLON CALLS FOR DIFFERENT MONUMENT.

**CORNERS TO BE INDEXED**

CORNER N-1/4	SECTION 6	TOWNSHIP 83N	RANGE 1W
-----------------	--------------	-----------------	-------------

OFFICE FILE NO. 973

83106c\_022301

S 1/4 CORNER  
SECTION 31, T84N,  
R1W, JONES COUNTY  
(CORNER NOT IDENTIFIED)

FOUND BENCHMARK

FOUND 1"X48" HEXAGONAL IRON  
PIN FLUSH WITH GROUND, WITH  
STEEL FENCE POST ALONGSIDE,  
NORTH 1/4 COR. SECTION 6,  
T83N, R1W, JONES COUNTY, IOWA

(COUNTY)  
(POSTEL-BARTLE-TARBOX)  
10-10-80

(NO CERTIFICATION ON THIS CORNER)

PREVIOUSLY RECORDED IN BOOK N/A, PAGE N/A  
MONUMENT DESCRIPTION AND HOW ESTABLISHED FOUND 1"X48"  
HEXAGONAL IRON PIN AS INDICATED. FIELD NOTES DESCRIBED MONUMENT AS  
N-1/4 COR. SEC. 6, T83N, R1W, JONES COUNTY, IOWA. NO TIES SET. SECTION  
CORNER TIED TO JONES COUNTY PROJECT FM-53(1)-55-53, PAGE 68  
STAKING NOTES, STATION 1095+31.38

**CORNERS TO BE INDEXED**

CORNER	SECTION	TOWNSHIP	RANGE
--------	---------	----------	-------

OFFICE FILE NO.

PREVIOUSLY RECORDED IN BOOK \_\_\_\_\_, PAGE \_\_\_\_\_  
MONUMENT DESCRIPTION AND HOW ESTABLISHED \_\_\_\_\_

**CORNERS TO BE INDEXED**

CORNER CENTER	SECTION 6	TOWNSHIP 83N	RANGE 1W
------------------	--------------	-----------------	-------------

OFFICE FILE NO. 990

83106m\_022301

9-29-80  
POSTEL-BARTLE-TARBOX  
(CHECKED 8-17-82)  
(FD. IRON PIN IN SLAB)

CL COUNTY ROAD

NAIL TOP WOOD POST

NAIL TOP WOOD POST

NAIL TOP WOOD POST

NAIL TOP WOOD POST

FD. 1/2"X22" IRON PIN BURIED  
10" WHEN DOING PRELIMINARY  
SURVEY FOR PROJECT NO.  
FM-53(1)-55-53, TIED CORNER  
TO STA. 69+06.42

NOTE:  
ALL DISTANCES SLOPE MEASURED.

REF.-BK#276  
STAKING NOTES P-263

(NO CERTIFICATION ON THIS CORNER)

PREVIOUSLY RECORDED IN BOOK N/A, PAGE N/A  
MONUMENT DESCRIPTION AND HOW ESTABLISHED FOUND CENTER  
SECTION CORNER AS INDICATED WHILE PERFORMING PRELIMINARY FOR COUNTY  
ROAD PROJECT, SET REFERENCE POINTS AND TIED OUT AS INDICATED.  
CENTER SECTION 6, TOWNSHIP 83 NORTH, RANGE 1 WEST, JONES COUNTY,  
IOWA

~~I hereby declare that this plat, survey or report was made by me or under my direct personal supervision and that I am a duly registered Land Surveyor under the laws of the State of Iowa.~~

Signed: \_\_\_\_\_

Joseph D. Tjepkes L.S. Iowa Reg. No. 14807  
My Registration Renewal Date is December 31, 2002

SEAL

J.D. TJEPKES LS 14807  
JONES COUNTY  
ENGINEER'S OFFICE

19501 HWY. 64,  
ANAMOSA, IOWA,  
52205 (319)462-3785