

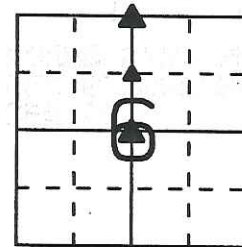
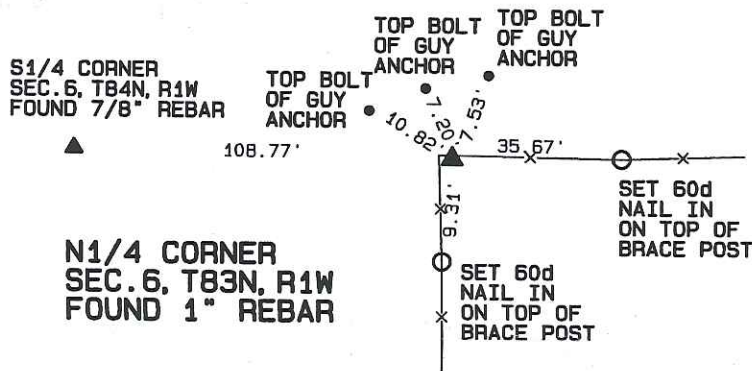
Prepared by: SCHNEIDER Land Surveying and Planning, Inc. P.O. Box 128 Farley, Iowa 52046 563-744-3631

UNITED STATES PUBLIC LAND SURVEY CORNER CERTIFICATE OF

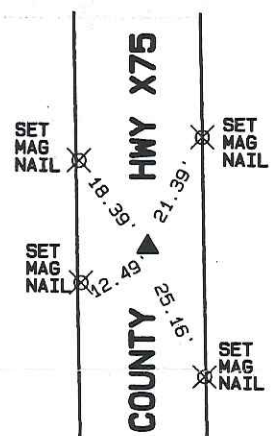
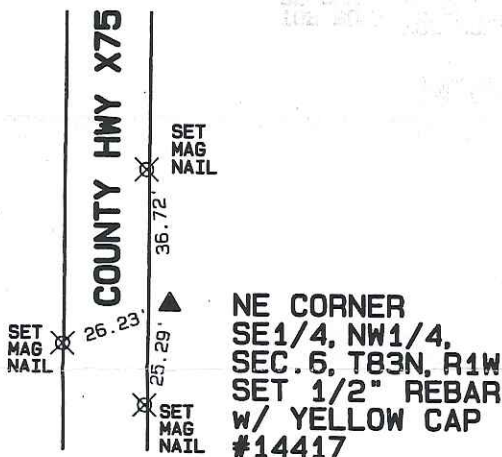
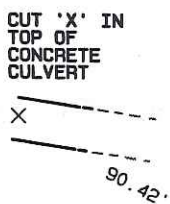
Land Survey Monuments situated in Section 6, Township 83 North, Range 1 West of the Fifth Principal Meridian, Jones County, Iowa.
 Previously recorded (NONE OF RECORD)
(BOOK, PAGE / INST. NO. / CABINET, SLIDE)

Monument Description and Remarks: A 1" IRON BAR WAS FOUND AT THE N1/4 CORNER OF SECTION 6, T83N, R1W AS ILLUSTRATED IN AN UNRECORDED CORNER CERTIFICATE FOUND IN THE JONES COUNTY ENGINEER'S OFFICE. THE NE CORNER OF THE SE1/4 OF THE NW1/4 OF SECTION 6, T83N, R1W WAS ESTABLISHED ON A LINE FROM THE CENTER TO THE N1/4 CORNER OF SAID SECTION 6 AT A PRORATED LOCATION BASED ON DISTANCES RECORDED ON AN EASEMENT FOR PUBLIC HIGHWAY FILED IN BOOK 122, PAGE 679. A 5/8" REBAR WAS FOUND AT THE CENTER OF SECTION 6, T83N, R1W AS ILLUSTRATED IN AN UNRECORDED CORNER CERTIFICATE FOUND IN THE JONES COUNTY ENGINEER'S OFFICE.

PLAN - VIEW



**CENTER
 SEC. 6, T83N, R1W
 FOUND 5/8" REBAR**



I hereby certify that this land surveying document was prepared and the related survey work was performed by me or under my direct personal supervision and that I am a duly licensed Land Surveyor under the laws of the State of Iowa.

David P. Schneider 3/14/2016
 Date: 3/14/2016

List Corners to be Indexed			
Corners	Section	Twp	Range
N1/4 CORNER	6	83N	1W
NE CORNER SE1/4, NW1/4	6	83N	1W
CENTER	6	83N	1W

David P. Schneider P.L.S. #14417
 My license renewal date is December 31, 2017.
 Pages or sheets covered by this seal: THIS SHEET ONLY

SCHNEIDER
 Land Surveying & Planning, Inc.
 P.O. Box 128 Farley, Iowa 52046
 Ph. #563-744-3631 Fax#563-744-3629

