

oxford

UNITED STATES PUBLIC LAND SURVEY CORNER CERTIFICATE

OF

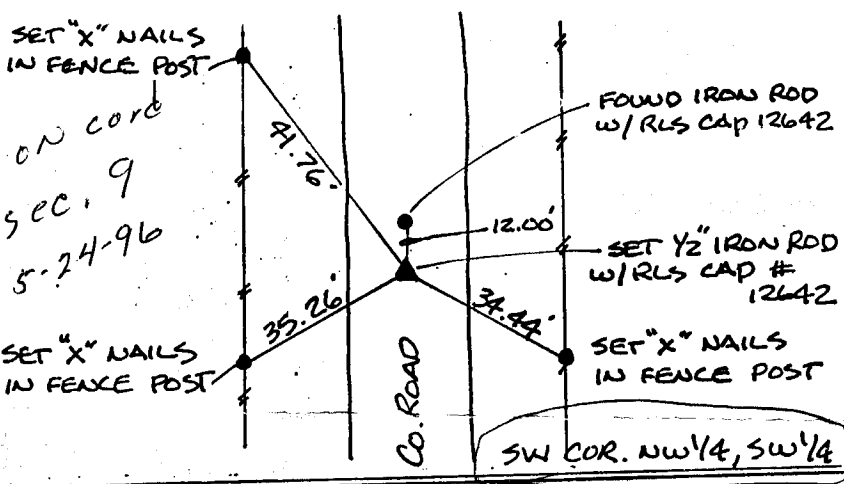
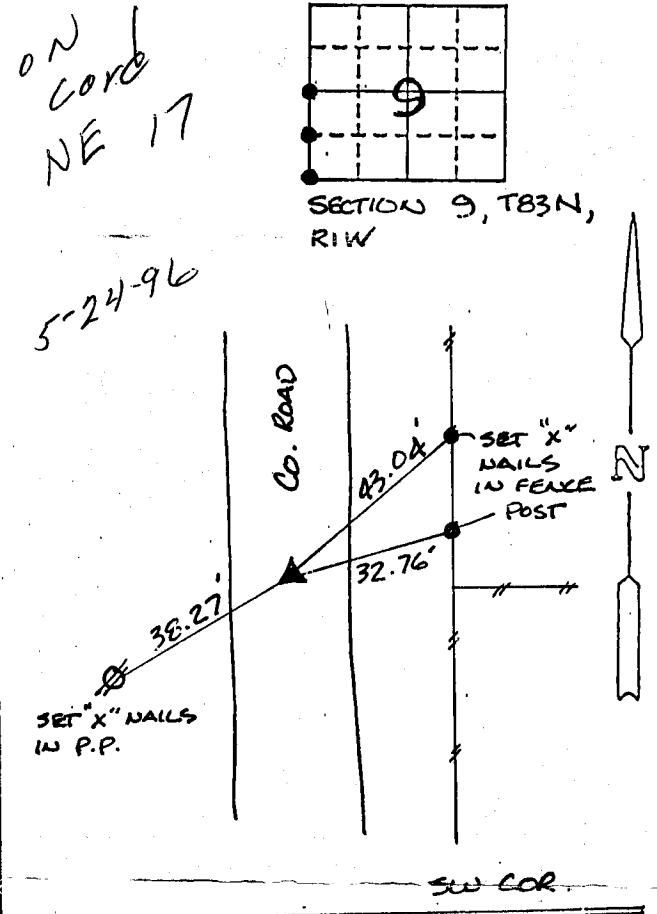
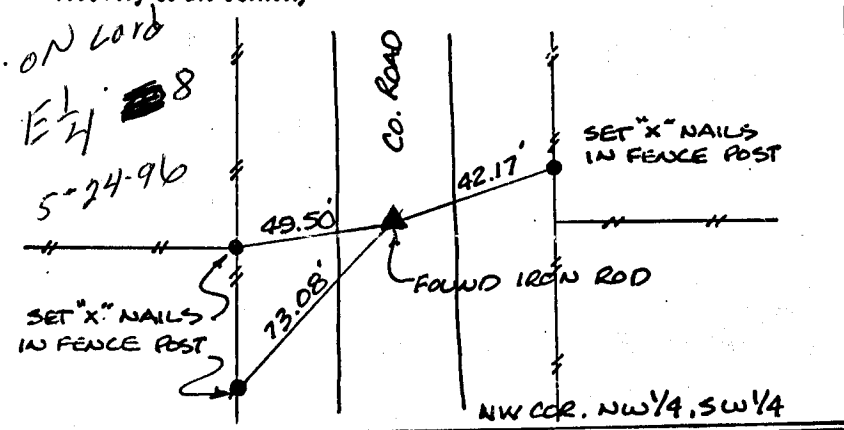
Land Survey Monuments situated in Section NINE (9), Township 83 NORTH, Range ONE WEST, of the Fifth Principal Meridian, JONES County, Iowa. Previously recorded in DOES NOT APPLY in County Recorder's Office.

(Show reason for preparing this certificate, the evidence and detailed procedures used in establishing the corner positions and monumentation found or placed.)

Monument Description and Remarks: NW CORNER NW 1/4 SW 1/4 - FOUND IRON ROD, USED 1982 TIES. SW CORNER NW 1/4, SW 1/4 - SET 1/2" IRON ROD W/RLS CAP # 12642 ON LINE & MIDWAY BETWEEN THE W 1/4 COR. & SW CORNER OF SAID SEC. 9. SW CORNER - SET 1/2" IRON ROD W/RLS CAP # 12642 @ E OF County Roadway & DOUBLED THE DISTANCE OF NW CORNER & W 1/4 CORNER OF SAID SEC. 9
NOTE: NO CORNER CERTIFICATE WAS FOUND @ COUNTY RECORDERS OFFICE

PLAN - VIEW

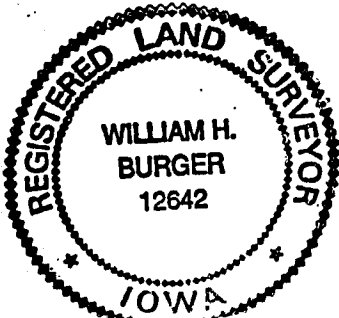
(Show a minimum of three reference ties to durable physical objects, relevant monuments and physical conditions that will enable recovery of the corner.)



I hereby certify that the survey work was completed and this certificate was prepared by me or under my direct personal supervision and that I am a duly registered land surveyor under the laws of the state of Iowa.

Signature: William H. Burger
Name typed or printed: WILLIAM H. BURGER
Date: 3/19/96 Reg. No. 12642

Corners	Section	Twp	Range
NW, NW 1/4, SW 1/4	9	83N	1W
SW, NW 1/4, SW 1/4	9	83N	1W
SW	9	83N	1W



SEAL