

Instrument #: 2024-0043
 01/05/2024 01:49:05 PM Total Pages: 1
 ZSC SECTION CORNER CERTIFICATE
 Recording Fee: \$7.00 Transfer Tax: \$0
 Sheri L. Jones, Recorder, Jones County Iowa



Prepared By: Thomas M. Novick, L.S. #17774 Novick Land Surveying LLC
 PO Box 365 Springville, Iowa 52336 Phone: 319-330-8197

UNITED STATES PUBLIC LAND SURVEY CORNER CERTIFICATE

OF

Land Survey Monuments situated in Section 9, Township 83 North, Range 1 West, of the Fifth Principal Meridian, Jones County, Iowa.
 Previously recorded in NA in County Recorders Office.

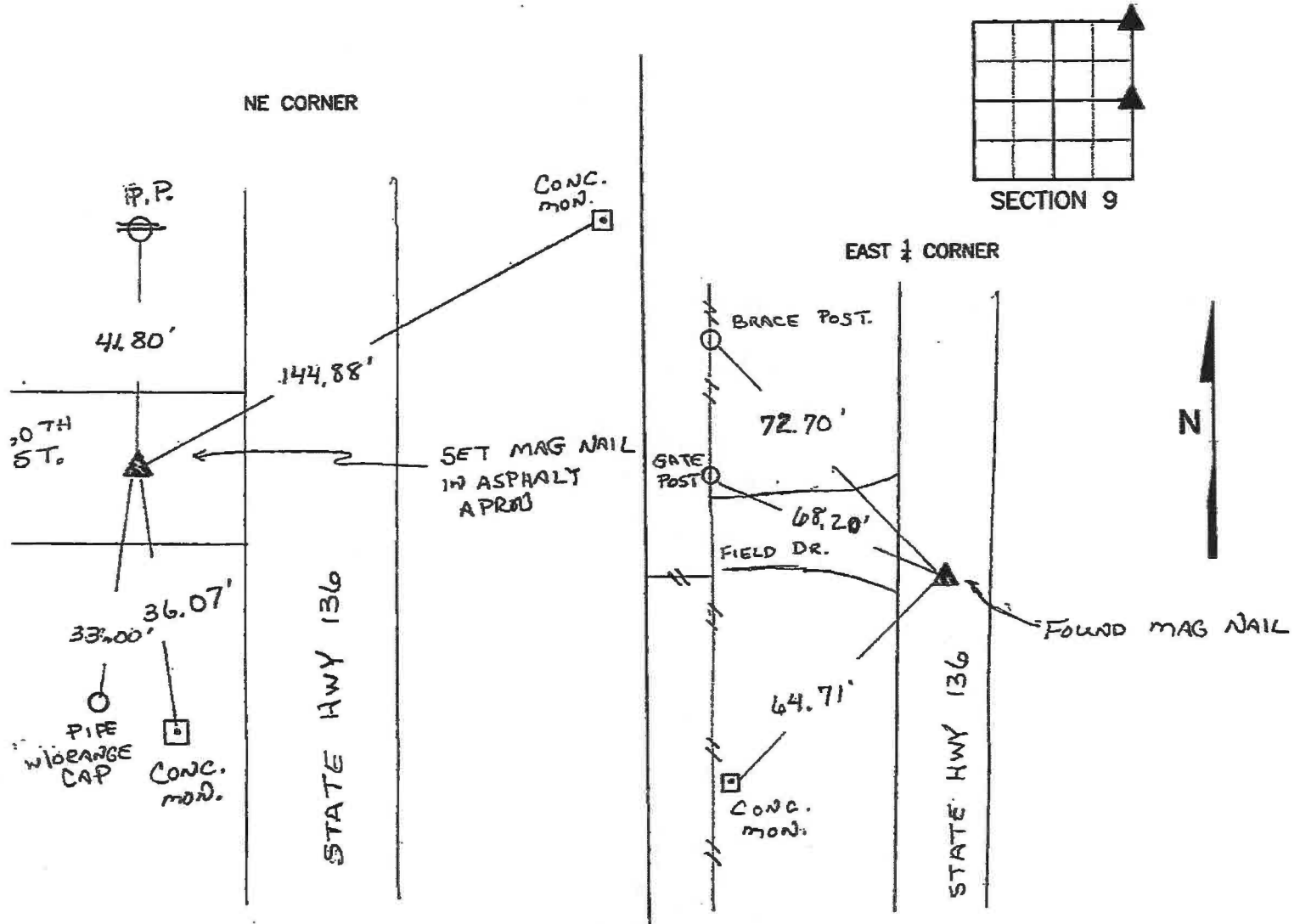
(book, page, document number, ect.)

(Show reason for preparing this certificate, the evidence and detailed procedures used in establishing the corner positions and monumentation found or placed.)

Monument Description and Remarks: Northeast Corner— set Mag nail in asphalt apron using state highway & easement records obtained from county engineers office. East 1/4 Corner found Mag Nail using state highway & easement records obtained from county engineers office

PLAN - VIEW

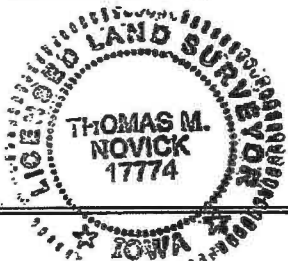
(Show a minimum of three reference ties to durable physical objects, relevant monuments and physical conditions that will enable recovery of the corner.)



I hereby certify that the survey work was completed and this certificate was prepared by me or under my direct personal supervision and that I am a duly registered land surveyor under the laws of the state of Iowa.

Signature: Thomas M. Novick
 Name typed or printed: Thomas M. Novick
 Date: 1-5-2024 Reg. No. 17774

Corners	List Corners to be Indexed		
	Section	Twp	Range
NE	9	83 NORTH	1 WEST
E 1/4	9	83 NORTH	1 WEST



SEAL