

COPY

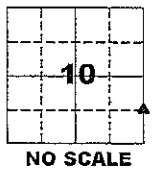
☐☐
 Jones County Marie Krutzfield Recorder
 Fee Book 2011 3373
 12/30/2011 @1157AM # Pages 2
 ZSC SEC COR CERT
 Total Fees: \$0.00

PREPARED BY
 CLARENCE J. WALTON, JONES COUNTY ENGINEER'S OFFICE, 19501 HWY. 64, ANAMOSA, IOWA, 52205 (319) 462-3785

UNITED STATES PUBLIC LAND SURVEY CORNER CERTIFICATE

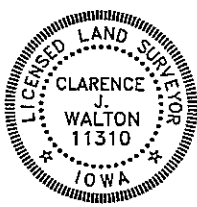
LAND SURVEY MONUMENTS SITUATED IN SECTION 10, TOWNSHIP 86 NORTH,
 RANGE 2 WEST OF THE 5TH PRINCIPAL MERIDIAN, JONES COUNTY, IOWA.

SURVEYOR'S NARRATIVE



SET 5/8" X 24" REBAR WITH ORANGE PLASTIC CAP #11310 AT INTERSECTION OF FENCE LINES FROM NORTH, FROM SOUTH, AND FROM WEST. FENCE LINES SEEMED TO BE BEST EVIDENCE OF LOCATION FOR CORNER AND HAVE BEEN IN PLACE FOR SOME TIME NOW. AS SHOWN ON PAGE 2 OF 2 OF THIS CERTIFICATE, THE READER CAN SEE THAT THE EAST LINE OF SECTION 10 FROM THE NE CORNER TO THE NE CORNER OF THE SE 1/4 SE 1/4 OF SECTION 10 BREAKS DOWN VERY CLOSELY TO BEING EQUAL IN DISTANCE BETWEEN CORNERS. WITH FINDING A REDHEAD AT THE E 1/4 CORNER IT SEEMED LIKELY THAT WILLIAM BURGER BROKE DOWN THE EAST LINE OF THE N 1/4 OF SECTION 10 EQUALLY BETWEEN THE NE CORNER AND THE NE CORNER OF THE SE 1/4 SE 1/4 OF SECTION. TALKING WITH HIM, I FOUND OUT THAT THIS IS WHAT HE DID. I AGREE WITH HIS BREAK DOWN AS NO OTHER EVIDENCE OFFERS A BETTER SOLUTION TO WHERE TO PLACE THIS CORNER (OR FOR THAT MATTER THE E 1/4 CORNER AND NE CORNER SE 1/4 NE 1/4 OF SECTION 10).

Page 1 of 2



I hereby certify that this land surveying document and the related survey work was performed by me or under my direct personal supervision and that I am a duly registered Land Surveyor under the laws of the State of Iowa.
 Signed: *Clarence J. Walton* 12/30/11
 Clarence J. Walton, L.S.
 My Registration Renewal Date is December 31, 2011
 Iowa License Number 11310
 Pages or sheets covered by this seal: 1 of 2.

- A. THERE IS NO CERTIFICATE FOR THE CORNER ON FILE WITH THE RECORDER OF THE COUNTY IN WHICH THE CORNER IS LOCATED.
- B. THE CORNER MONUMENT HAS BEEN REPLACED OR MODIFIED.
- C. THE SURVEYOR IN RESPONSIBLE CHARGE OF THE LAND SURVEYING ACCEPTS A CORNER POSITION THAT DIFFERS FROM THAT SHOWN IN THE PUBLIC RECORDS OF THE COUNTY IN WHICH THE CORNER IS LOCATED.
- D. THE REFERENCE TIES REFERRED TO IN AN EXISTING PUBLIC RECORD NO LONGER EXIST.
- E. EXISTING CORNER TIES UPDATED.

CORNER	CORNERS TO BE INDEXED		
	SECTION	TOWNSHIP	RANGE
NE CORNER	10	86N	2W
SE 1/4 SE 1/4	10	86N	2W
SE CORNER	10	86N	2W
NE 1/4 SE 1/4	11	86N	2W
SW CORNER	11	86N	2W
NW 1/4 SW 1/4	11	86N	2W
NW CORNER	11	86N	2W
SW 1/4 SW 1/4	11	86N	2W

JONES COUNTY ENGINEER'S OFFICE



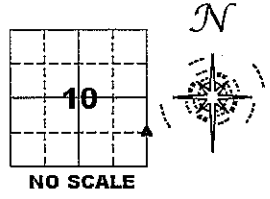
19501 HWY. 64, ANAMOSA, IOWA 52205
 (319) 462-3785

UNITED STATES PUBLIC LAND SURVEY CORNER CERTIFICATE

LAND SURVEY MONUMENTS SITUATED IN SECTION 10, TOWNSHIP 86 NORTH,
RANGE 2 WEST OF THE 5TH PRINCIPAL MERIDIAN, JONES COUNTY, IOWA.

STATE PLANE COORDINATE
NAD 83 IOWA NORTH
N 3571127.05
E 5583376.70

CORNER SECTION TOWNSHIP RANGE
NE CORNER 10 T86N R2W
SE 1/4 SE 1/4



NOTES:

- 1) THE STATE PLANE COORDINATES AS SHOWN ARE FOR CONVENIENCE ONLY. THE TIES AS SHOWN SHOULD BE USED TO REPLACE THE CORNER, IF DESTROYED.
- 2) COORDINATES AS SHOWN ARE GRID COORDINATES AND BASED ON JONES COUNTY G.P.S. CONTROL NETWORK WHICH IN TURN IS BASED ON NAD 83 IOWA NORTH DATUM.
- 3) ALL MEASUREMENTS ARE IN FEET AND DECIMALS THEREOF.
- 4) * GRID DISTANCE, BASED ON JONES COUNTY G.P.S. CONTROL NETWORK.

NE CORNER
SECTION 10-T86N-R2W
FOUND 1/2" REBAR W/OPC
(# OBLITERATED)
1" BELOW PRESENT GROUND SURFACE
N: 3575126.54
E: 5583299.67

S01°06'08"E 1333.37' *

NE CORNER
SE 1/4 NE 1/4
SECTION 10-T86N-R2W
FOUND 1/2" REBAR W/YPC #12642
N: 3572460.21
E: 5583325.32

S01°06'16"E 1333.46' *

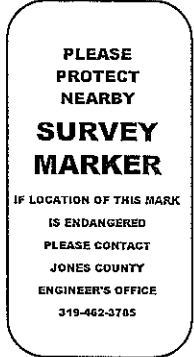
E 1/4 CORNER
SECTION 10-T86N-R2W
SET 5/8" X 24" REBAR W/OPC #11310 ±18"
BELOW PRESENT GROUND SURFACE
N: 3572460.21
E: 5583351.02

S01°06'13"E 1333.41' *

NE CORNER
SE 1/4 SE 1/4
SECTION 10-T86N-R2W
SET 5/8" X 24" REBAR W/OPC #11310 ±3"
ABOVE PRESENT GROUND SURFACE
N: 3571127.05
E: 5583376.70

S01°06'13"E 1333.41' *

"SURVEY MARKER" SIGN

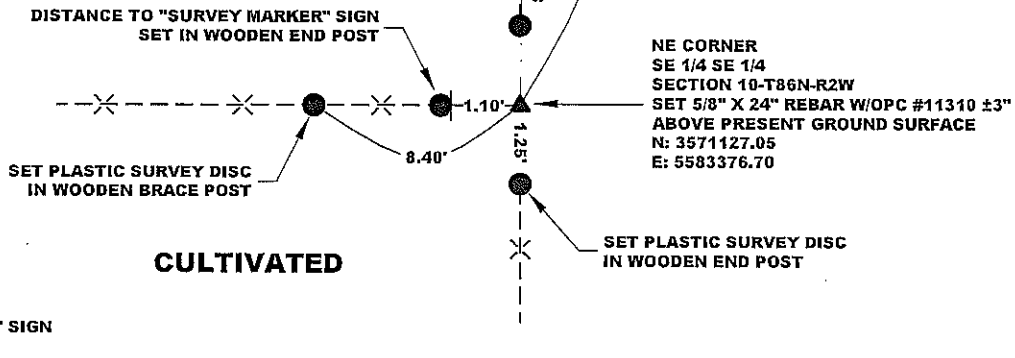


SURVEY DISC



TIMBERED PASTURE

CULTIVATED



LEGEND

- OPC ORANGE PLASTIC CAP
- () RECORDED AS
- SET "SURVEY MARKER" SIGN IN WOODEN END POST

PREVIOUSLY RECORDED IN N/A
MONUMENT DESCRIPTION AND HOW ESTABLISHED SET 5/8" X 24" REBAR WITH ORANGE PLASTIC CAP # 11310 ± 3" ABOVE PRESENT GROUND SURFACE.
PLEASE REFER TO PAGE 1 OF 2 FOR A MORE DETAILED NARRATIVE.

BOOK 341, PAGE 72 DATE OF SURVEY: 12/9/11



I hereby certify that this land surveying document and the related survey work was performed by me or under my direct personal supervision and that I am a duly registered Land Surveyor under the laws of the State of Iowa.
Signed: *Clarence J. Walton* 12/30/11
Clarence J. Walton, L.S.
My Registration Renewal Date is December 31, 2011
Iowa License Number 11310
Pages or sheets covered by this seal: 2 of 2.

- A. THERE IS NO CERTIFICATE FOR THE CORNER ON FILE WITH THE RECORDER OF THE COUNTY IN WHICH THE CORNER IS LOCATED.
- B. THE CORNER MONUMENT HAS BEEN REPLACED OR MODIFIED.
- C. THE SURVEYOR IN RESPONSIBLE CHARGE OF THE LAND SURVEYING ACCEPTS A CORNER POSITION THAT DIFFERS FROM THAT SHOWN IN THE PUBLIC RECORDS OF THE COUNTY IN WHICH THE CORNER IS LOCATED.
- D. THE REFERENCE TIES REFERRED TO IN AN EXISTING PUBLIC RECORD NO LONGER EXIST.
- E. EXISTING CORNER TIES UPDATED.

CORNERS TO BE INDEXED

CORNER	SECTION	TOWNSHIP	RANGE
NE CORNER SE 1/4 SE 1/4	10	86N	2W
SE CORNER NE 1/4 SE 1/4	10	86N	2W
SW CORNER NW 1/4 SW 1/4	11	86N	2W
NW CORNER SW 1/4 SW 1/4	11	86N	2W

JONES COUNTY ENGINEER'S OFFICE



19501 HWY. 64, ANAMOSA, IOWA 52205
(319) 462-3785