

COPY

Jones County Marie Krutzfield Recorder  
 Fee Book 2011 3195  
 12/14/2011 @1136AM # Pages 1  
 ZSC SEC COR CERT  
 Total Fees: \$0.00

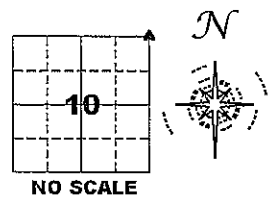
PREPARED BY  
 CLARENCE J. WALTON, JONES COUNTY ENGINEER'S OFFICE, 19501 HWY. 64, ANAMOSA, IOWA, 52205 (319) 462-3785

# UNITED STATES PUBLIC LAND SURVEY CORNER CERTIFICATE

LAND SURVEY MONUMENTS SITUATED IN SECTION 10, TOWNSHIP 86 NORTH,  
 RANGE 2 WEST OF THE 5TH PRINCIPAL MERIDIAN, JONES COUNTY, IOWA.

STATE PLANE COORDINATE  
 NAD 83 IOWA NORTH  
 N 3575126.54  
 E 5583299.67

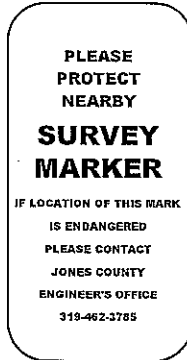
CORNER SECTION TOWNSHIP RANGE  
 NE CORNER 10 T86N R2W



NOTES:

- 1) THE STATE PLANE COORDINATES AS SHOWN ARE FOR CONVENIENCE ONLY. THE TIES AS SHOWN SHOULD BE USED TO REPLACE THE CORNER, IF DESTROYED.
- 2) COORDINATES AS SHOWN ARE GRID COORDINATES AND BASED ON JONES COUNTY G.P.S. CONTROL NETWORK WHICH IN TURN IS BASED ON NAD 83 IOWA NORTH DATUM.
- 3) ALL MEASUREMENTS ARE IN FEET AND DECIMALS THEREOF.
- 4) \* GRID DISTANCE, BASED ON JONES COUNTY G.P.S. CONTROL NETWORK.

"SURVEY MARKER" SIGN

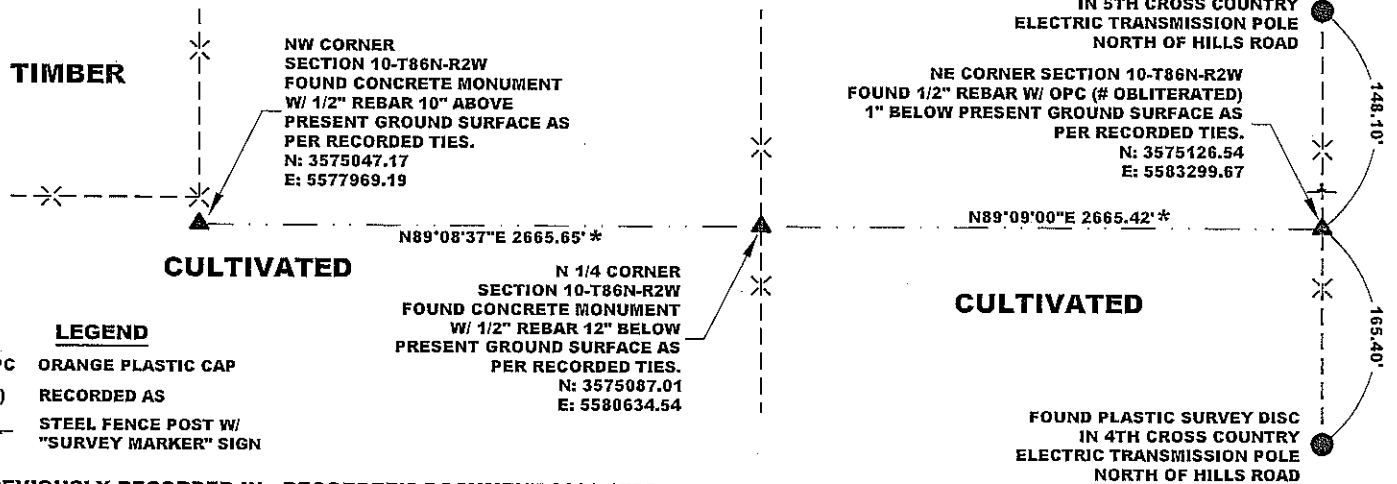


SURVEY DISC



CULTIVATED

CULTIVATED



- LEGEND**
- OPC ORANGE PLASTIC CAP
  - ( ) RECORDED AS
  - T STEEL FENCE POST W/ "SURVEY MARKER" SIGN

PREVIOUSLY RECORDED IN RECORDER'S DOCUMENT 2006 1763  
 MONUMENT DESCRIPTION AND HOW ESTABLISHED FOUND 1/2" REBAR WITH ORANGE PLASTIC CAP (NUMBER OBLITERATED) 1" BELOW PRESENT GROUND SURFACE AS PER RECORDER'S DOCUMENT NUMBER 2006 1763. NO OTHER TIES SURVIVING. NORTH-SOUTH FENCE LINE IS LIKELY GOING TO BE REMOVED IN THE NEAR FUTURE. SHOT SECTION CORNERS SHOWN TO PROVIDE STATE PLANE COORDINATES ON THESE MONUMENTS AND TO (HOPEFULLY) PRESERVE THE NE CORNER OF SECTION 10-T86N-R2W. NO OTHER TIES AVAILABLE NEARBY.

DATA COLLECTOR DATE OF SURVEY: 11/3/11



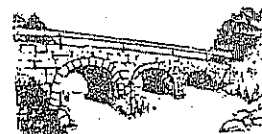
I hereby certify that this land surveying document and the related survey work was performed by me or under my direct personal supervision and that I am a duly registered Land Surveyor under the laws of the State of Iowa.  
 Signed: *Clarence J. Walton* 14 Dec 11  
 Clarence J. Walton, L.S.  
 My Registration Renewal Date is December 31, 2011  
 Iowa License Number 11310  
 Pages or sheets covered by this seal: 1 of 1.

- A. THERE IS NO CERTIFICATE FOR THE CORNER ON FILE WITH THE RECORDER OF THE COUNTY IN WHICH THE CORNER IS LOCATED.
- B. THE CORNER MONUMENT HAS BEEN REPLACED OR MODIFIED.
- C. THE SURVEYOR IN RESPONSIBLE CHARGE OF THE LAND SURVEYING ACCEPTS A CORNER POSITION THAT DIFFERS FROM THAT SHOWN IN THE PUBLIC RECORDS OF THE COUNTY IN WHICH THE CORNER IS LOCATED.
- D. THE REFERENCE TIES REFERRED TO IN AN EXISTING PUBLIC RECORD NO LONGER EXIST.
- E. EXISTING CORNER TIES UPDATED.

CORNERS TO BE INDEXED

CORNER	SECTION	TOWNSHIP	RANGE
NE CORNER	10	86N	2W
SE CORNER	3	86N	2W
SW CORNER	2	86N	2W
NW CORNER	11	86N	2W

JONES COUNTY ENGINEER'S OFFICE



19501 HWY. 64, ANAMOSA, IOWA 52205  
 (319) 462-3785

2006 1763  
 FILED  
 RECORDERS OFFICE  
 JONES COUNTY IOWA

05 MAY -5 AM 10:26

MARIE KRUTZFIELD  
 RECORDER *no fee*

J.D. TJEPKES, LS. JONES COUNTY ENGINEER'S OFFICE, 19501 HWY. 64, ANAMOSA, IOWA, 52205 (319)462-3785

# UNITED STATES PUBLIC LAND SURVEY CORNER CERTIFICATE

LAND SURVEY MONUMENTS SITUATED IN SECTION 10, TOWNSHIP 86  
 NORTH, RANGE 2 WEST OF THE 5TH P.M., JONES COUNTY, IOWA

**CORNERS TO BE INDEXED**

CORNER	SECTION	TOWNSHIP	RANGE
NE	10	86N	2W

OFFICE FILE NO. 86210e\_050106.tif

FIELD NOTES:  
 3-23-2006  
 BK 343 P 142

PREVIOUSLY RECORDED IN BOOK \_\_\_\_\_, PAGE \_\_\_\_\_  
 MONUMENT DESCRIPTION AND HOW ESTABLISHED FOUND  
 FOUND PIN & CAP LS #8655 (CHLEBICKI), FROM TIES ON RECORD AT  
 JONES COUNTY ENGINEER'S OFFICE FROM LS# 8505 (FAGLE) FOR D.O.T. IN  
 1997. NEW TIES AS INDICATED FOR NORTHEAST CORNER SECTION 10,  
 TOWNSHIP 86 NORTH, RANGE 2 WEST OF THE 5TH PRINCIPAL MERIDIAN,  
 JONES COUNTY, IOWA.

**CORNERS TO BE INDEXED**

CORNER	SECTION	TOWNSHIP	RANGE

OFFICE FILE NO. \_\_\_\_\_

PREVIOUSLY RECORDED IN BOOK \_\_\_\_\_, PAGE \_\_\_\_\_  
 MONUMENT DESCRIPTION AND HOW ESTABLISHED \_\_\_\_\_

**CORNERS TO BE INDEXED**

CORNER	SECTION	TOWNSHIP	RANGE

OFFICE FILE NO. \_\_\_\_\_

PREVIOUSLY RECORDED IN BOOK \_\_\_\_\_, PAGE \_\_\_\_\_  
 MONUMENT DESCRIPTION AND HOW ESTABLISHED \_\_\_\_\_

**CORNERS TO BE INDEXED**

CORNER	SECTION	TOWNSHIP	RANGE

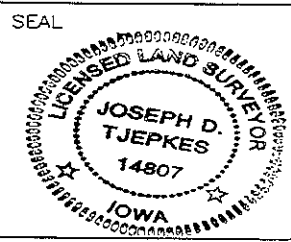
OFFICE FILE NO. \_\_\_\_\_

PREVIOUSLY RECORDED IN BOOK \_\_\_\_\_, PAGE \_\_\_\_\_  
 MONUMENT DESCRIPTION AND HOW ESTABLISHED \_\_\_\_\_

I hereby declare that this plat, survey or report was made by me or under my direct personal supervision and that I am a duly registered Land Surveyor under the laws of the State of Iowa.

Signed: *J.D. Tjepkes* 5-04-06

Joseph D. Tjepkes L.S. Iowa Reg. No. 14807  
 My Registration Renewal Date is December 31, 2006



J.D. TJEPKES LS 14807  
 JONES COUNTY  
 ENGINEER'S OFFICE

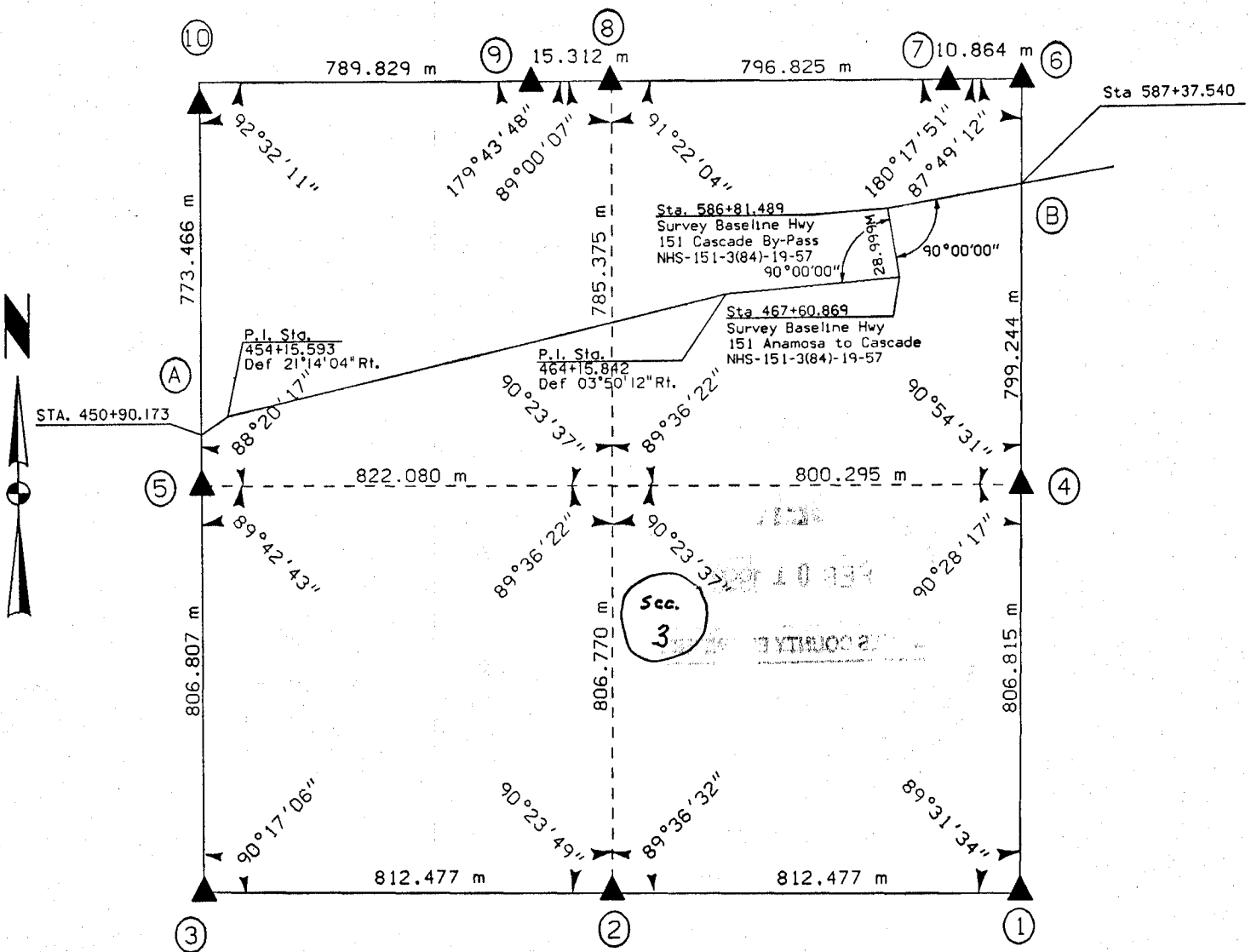
19501 HWY. 64,  
 ANAMOSA, IOWA,  
 52205 (319)462-3785

### UNITED STATES PUBLIC SECTION CORNER CERTIFICATION AND LAND CORNER SURVEY SECTION 3 T-86N R-2W

MADE FOR  
IOWA DEPARTMENT OF TRANSPORTATION FOR THE PURPOSE OF  
RIGHT OF WAY DESCRIPTIONS ON PRIMARY ROAD No. U.S. 151

MADE BY  
MICHAEL R. FAGLE R.L.S. No. 8505  
JONES COUNTY, IOWA NHS-151-3(84)--19-57  
APRIL 1998 THRU OCTOBER 1998

ALL DISTANCES WERE CAREFULLY MEASURED AND MAY NOT AGREE WITH ROAD SURVEY STATIONING

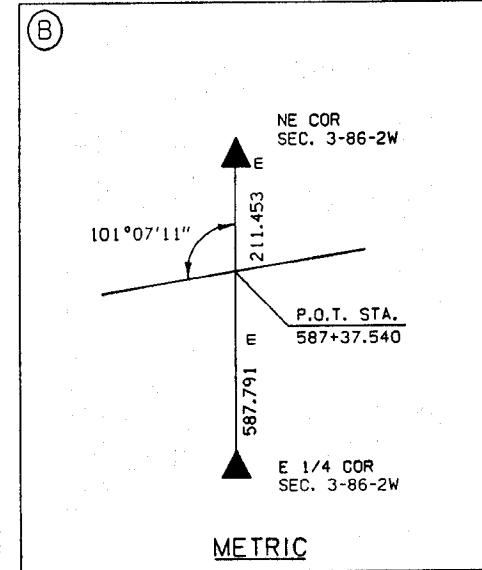
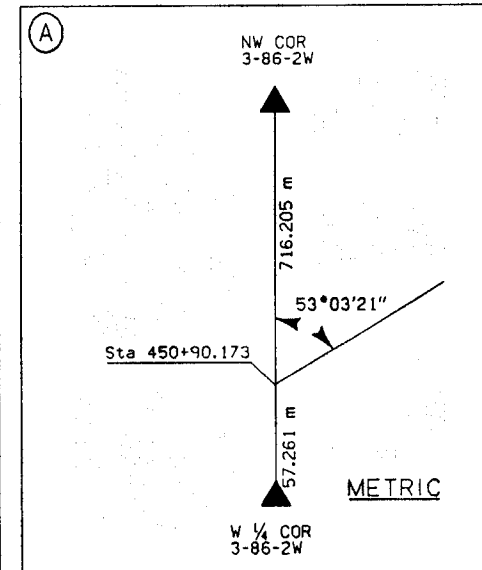
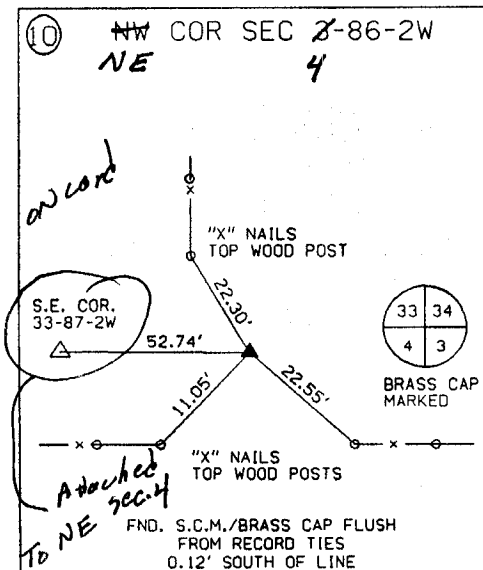
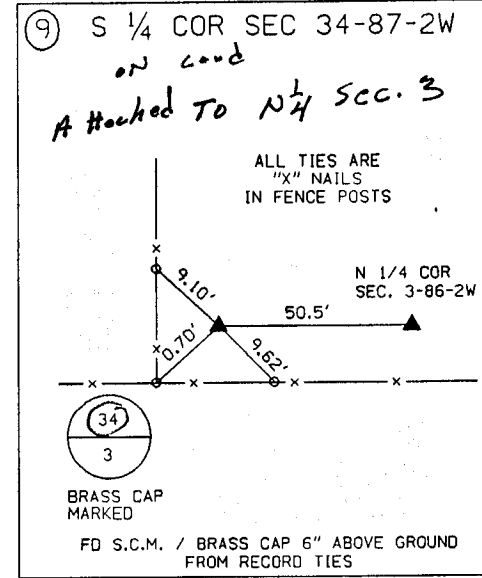
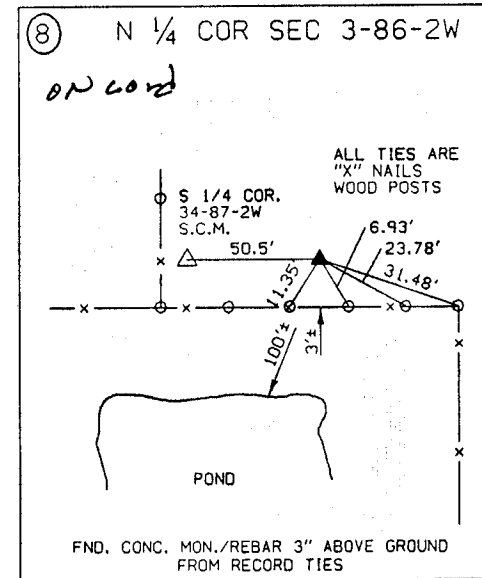
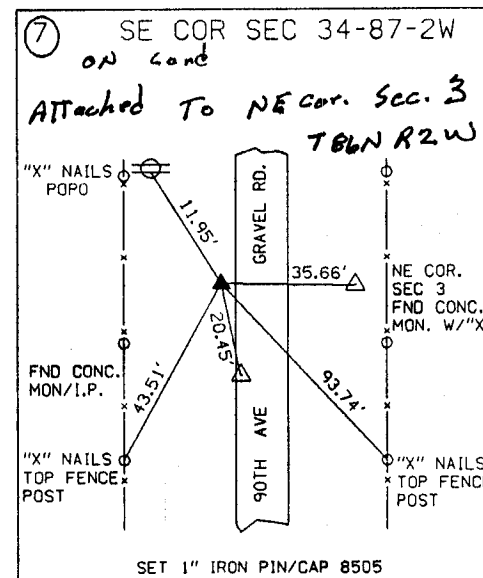
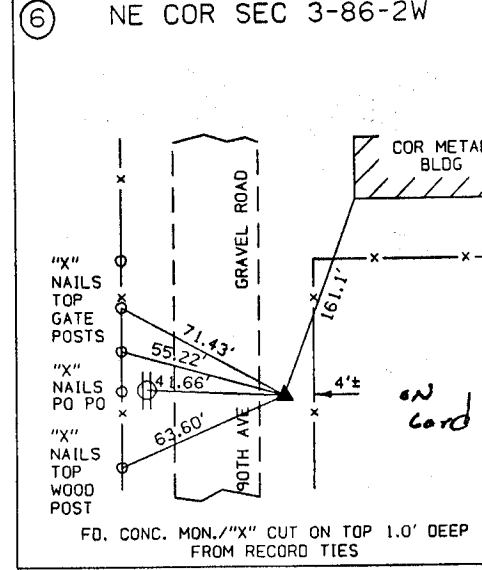
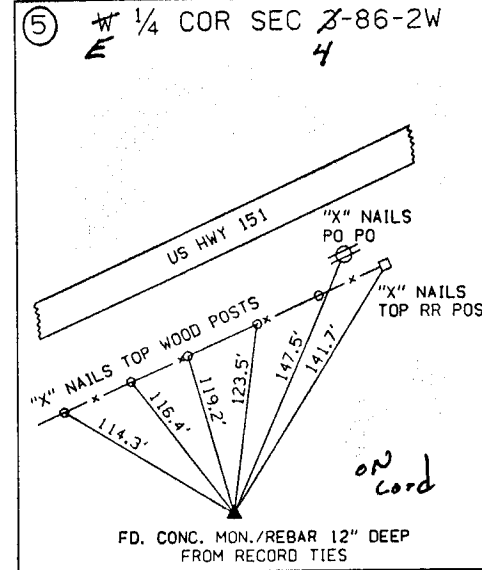
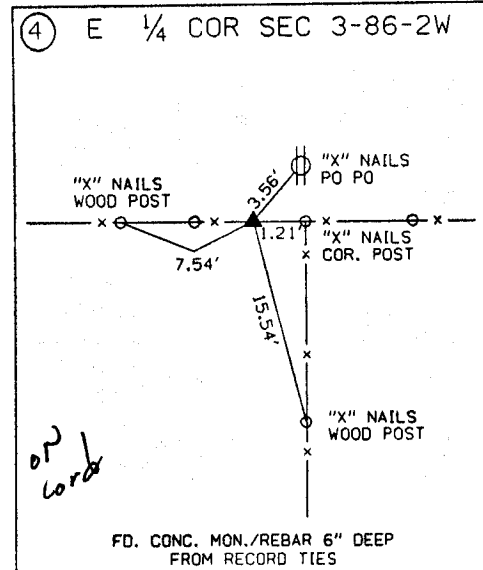
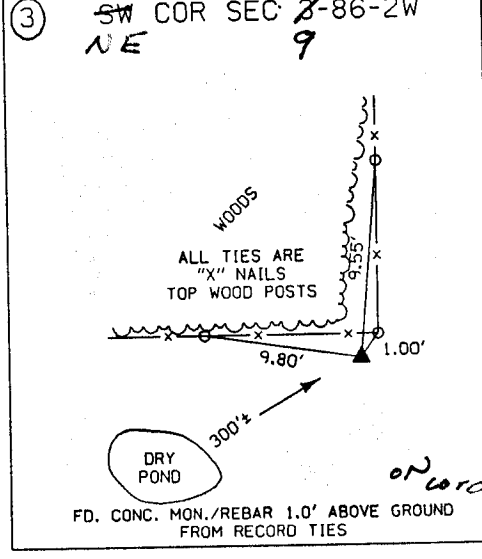
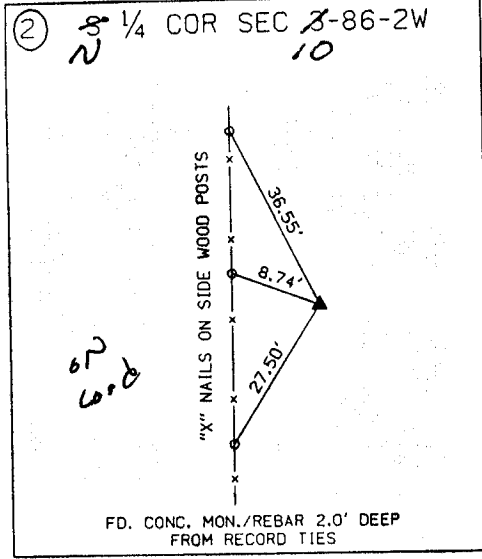
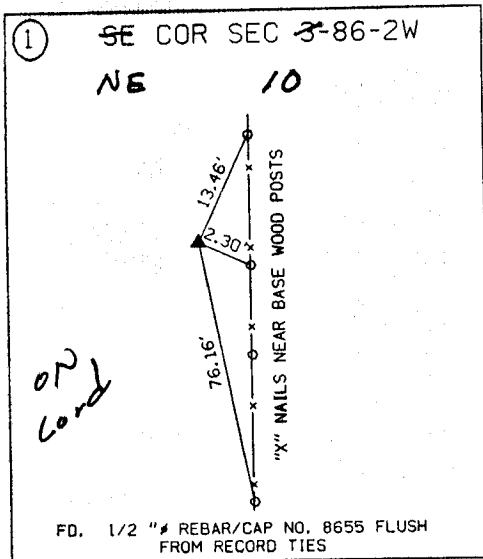


	I hereby certify that this Land Surveying document was prepared by me or under my direct personal supervision and that I am a duly Licensed Land Surveyor under the laws of the State of Iowa.
	<u>Michael R. Fagle</u> 1-21-99 MICHAEL R. FAGLE Date
	License number 8505
	My license renewal date is December 31, 2000
	Pages or sheets covered by this seal: <u>TWO (2)</u>

**METRIC**

UNITED STATES PUBLIC SECTION CORNER CERTIFICATION  
AND LAND CORNER SURVEY  
SECTION 3 T-86N R-2W

1-21-99



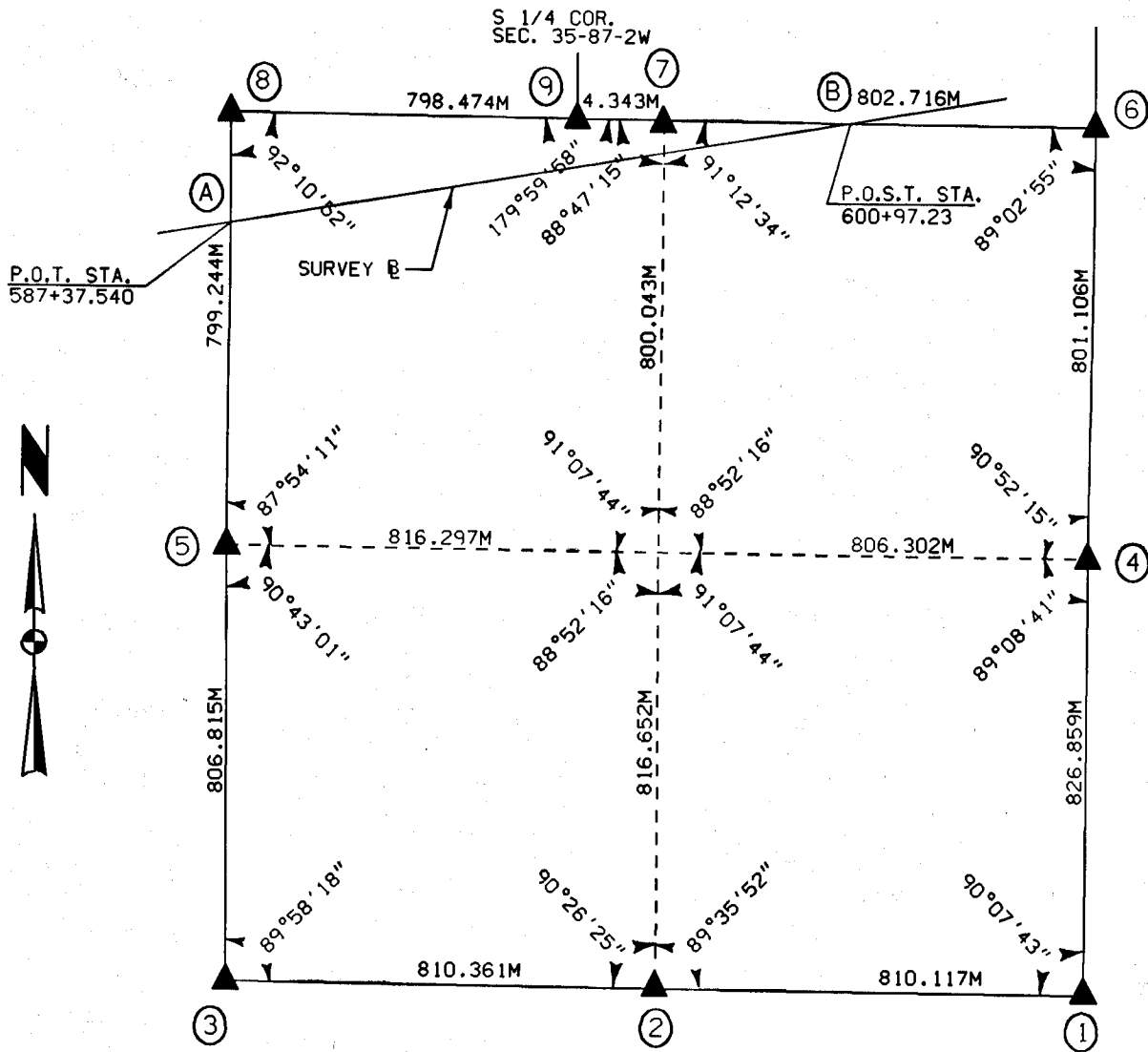
ALL TIES ARE ENGLISH UNLESS OTHERWISE NOTED

UNITED STATES PUBLIC SECTION CORNER CERTIFICATION  
AND LAND CORNER SURVEY  
SECTION 2 T-86N R-2W

MADE FOR  
IOWA DEPARTMENT OF TRANSPORTATION FOR THE PURPOSE OF  
RIGHT OF WAY DESCRIPTIONS ON PRIMARY ROAD No. U.S. 151  
MADE BY

MICHAEL R. FAGLE R.L.S. No. 8505  
JONES COUNTY, IOWA NHS-151-3(84)--19-57  
FEBURARY 2, 1996 THRU JANUARY 15, 1997

ALL DISTANCES WERE CAREFULLY MEASURED AND MAY NOT AGREE WITH ROAD SURVEY STATIONING

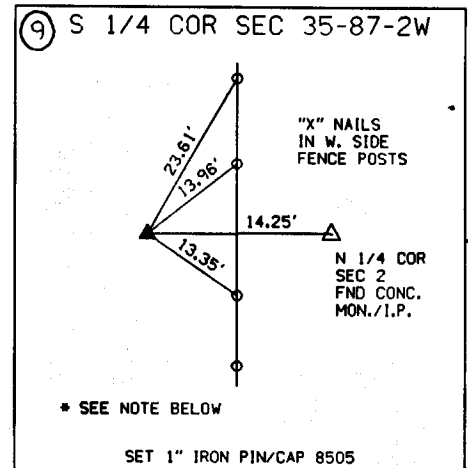
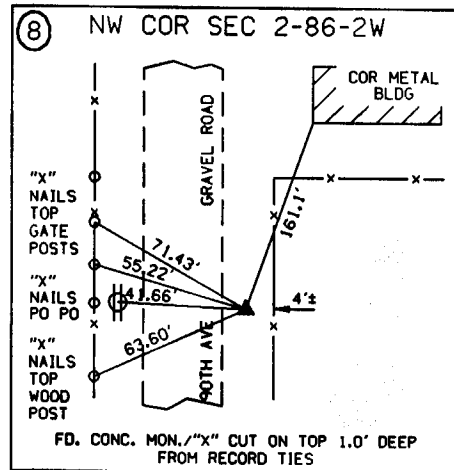
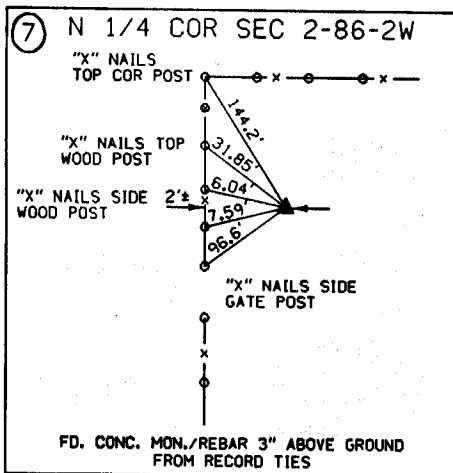
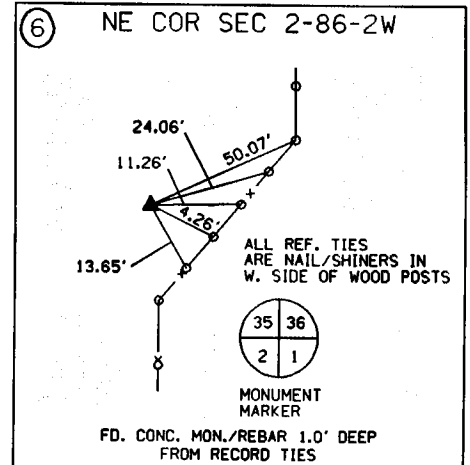
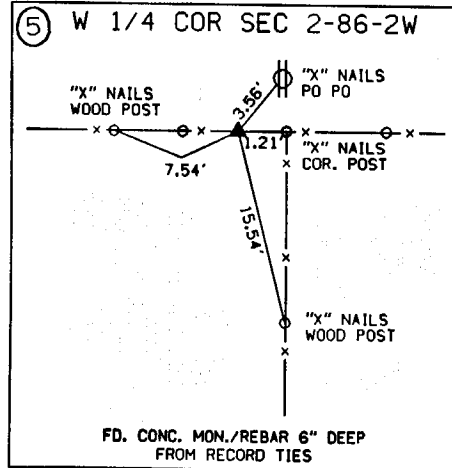
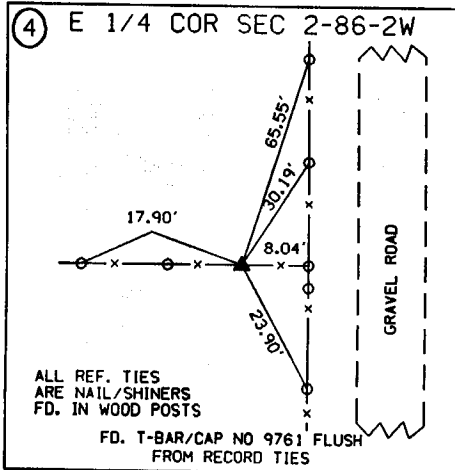
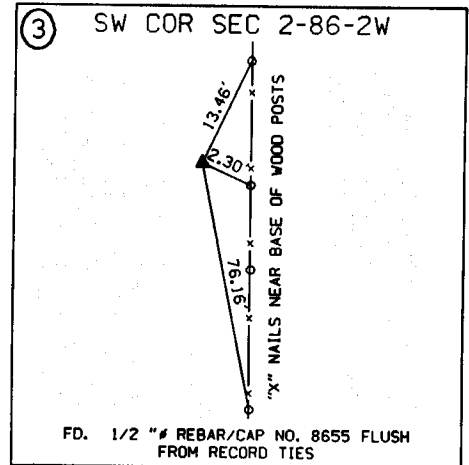
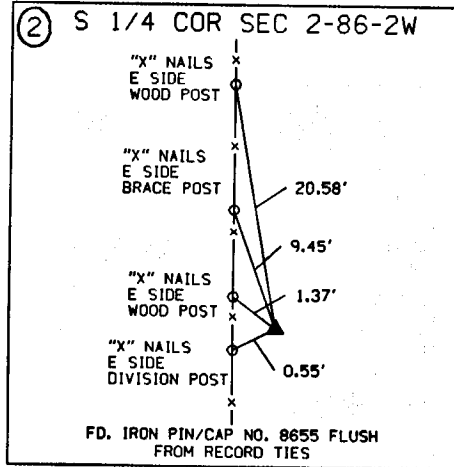
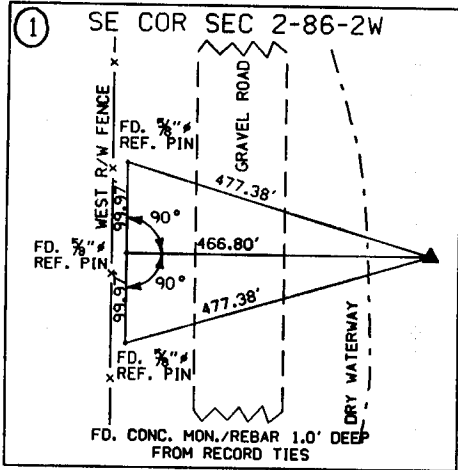


	I hereby certify that this Land Surveying document was prepared by me or under my direct personal supervision and that I am a duly Licensed Land Surveyor under the laws of the State of Iowa.
	<i>Michael R. Fagle</i> 7-24-98 MICHAEL R. FAGLE Date License number 8505 My license renewal date is December 31, 1998 Pages or sheets covered by this seal: _____ _____

7-24-98

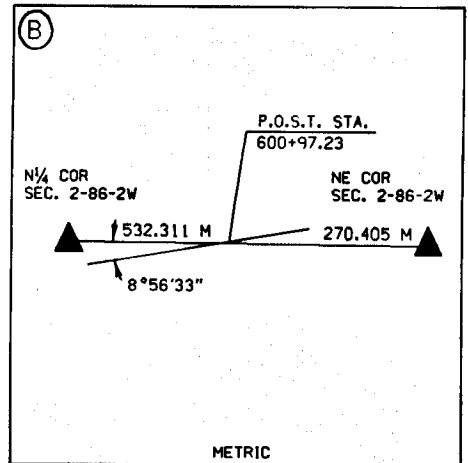
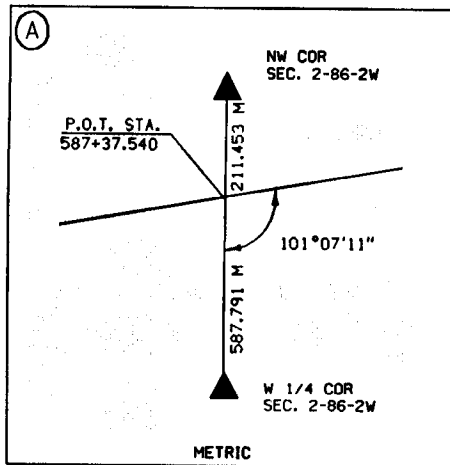
UNITED STATES PUBLIC SECTION CORNER CERTIFICATION  
AND LAND CORNER SURVEY  
SECTION 2 T-86N R-2W

MADE FOR  
IOWA DEPARTMENT OF TRANSPORTATION FOR THE PURPOSE OF  
RIGHT OF WAY DESCRIPTIONS ON PRIMARY ROAD No. U.S. 151



NOTES :

SET THE S 1/4 COR. OF SEC. 35-87-2W 14.25 FEET WEST OF THE N 1/4 CORNER OF SEC. 2-86-2W. POSITION OF CORNER WAS DETERMINED FROM CHAINING NOTES. USING PROPORTION DISTANCE BETWEEN SW COR. SEC. 35-87-2W AND A POINT 6.60 FEET EAST OF NE COR. OF SEC. 2-86-2W



REVISED 7-24-98

ALL TIES ARE ENGLISH UNLESS OTHERWISE NOTED

SHEET 2 OF 2

98 99 0536

FILED  
RECORDERS OFFICE  
JONES COUNTY IOWA

98 AUG 12 AM 10: 14

LINDA J. BENDIXEN  
RECORDER 16.00 pd

Rust Environment and Infrastructure - 501 Sycamore Street - Waterloo, Iowa - 1-319-232-6531

AFFIDAVIT FOR CORRECTION TO SECTION CORNER CERTIFICATE

DATE: JULY 29, 1998

AFFIDAVIT FOR CORRECTIONS MADE TO SECTION CORNER CERTIFICATION FILE IN THE JONES COUNTY RECORDER'S OFFICE.

THE TIES OF THE SOUTH QUARTER CORNER OF SECTION 35 TOWNSHIP 87 NORTH RANGE 2 WEST OF THE 5TH P.M. WAS CHANGED.

MICHAEL R. FAGLE  
L.S. NO. 8505

RECEIVED

AUG 14 1998

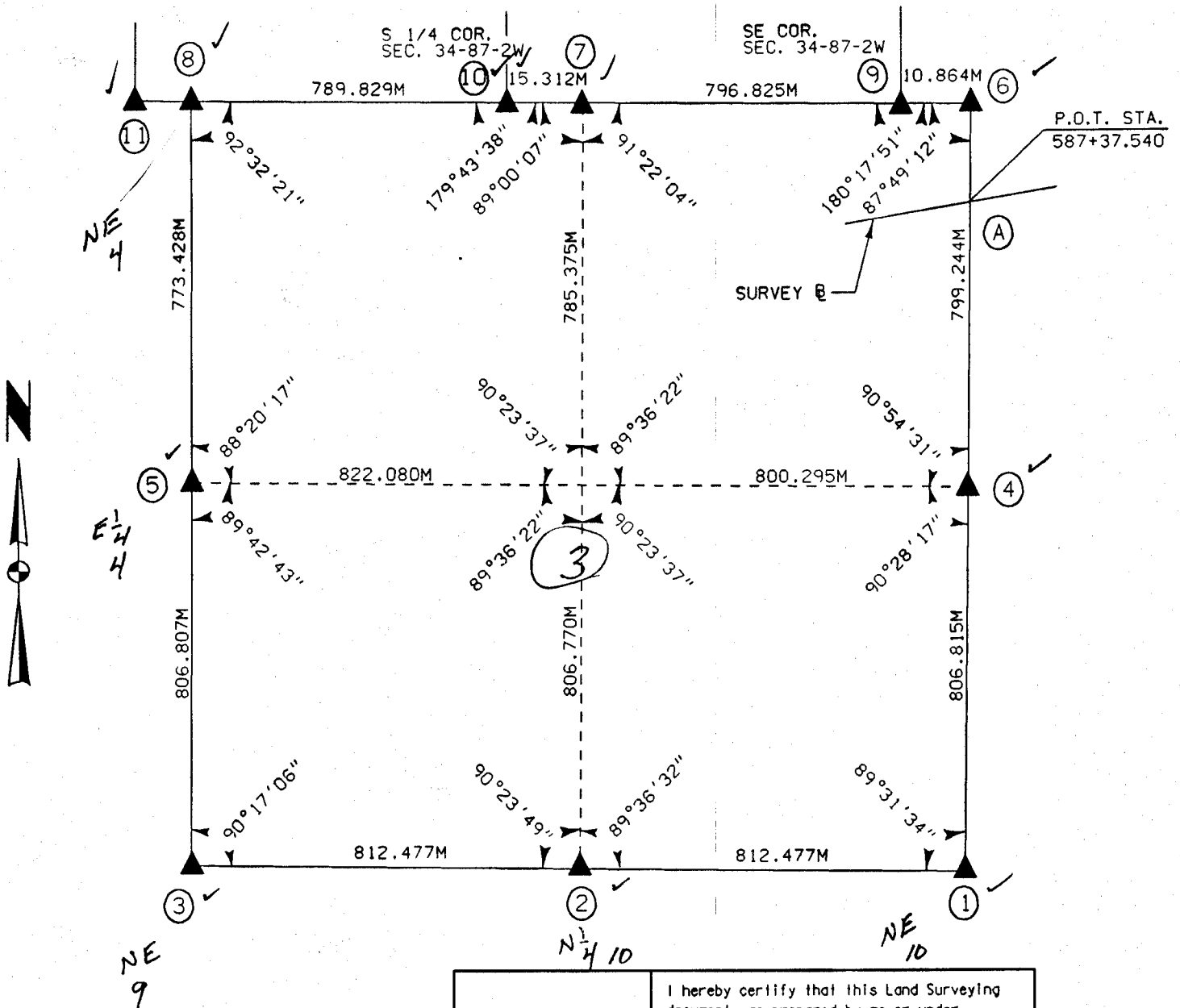
JONES COUNTY ENGINEER

UNITED STATES PUBLIC SECTION CORNER CERTIFICATION  
AND LAND CORNER SURVEY  
SECTION 3 T-86N R-2W

MADE FOR  
IOWA DEPARTMENT OF TRANSPORTATION FOR THE PURPOSE OF  
RIGHT OF WAY DESCRIPTIONS ON PRIMARY ROAD No. U.S. 151

MADE BY  
MICHAEL R. FAGLE R.L.S. No. 8505  
JONES COUNTY, IOWA NHS-151-3(84)--19-57  
FEBURARY 2, 1996 THRU JANUARY 15, 1997

ALL DISTANCES WERE CAREFULLY MEASURED AND MAY NOT AGREE WITH ROAD SURVEY STATIONING



	I hereby certify that this Land Surveying document was prepared by me or under my direct personal supervision and that I am a duly Licensed Land Surveyor under the laws of the State of Iowa.
	<u>Michael R. Fagle</u> 1-10-97 MICHAEL R. FAGLE Date License number 8505 My license renewal date is December 31, 1996 Pages or sheets covered by this seal: _____

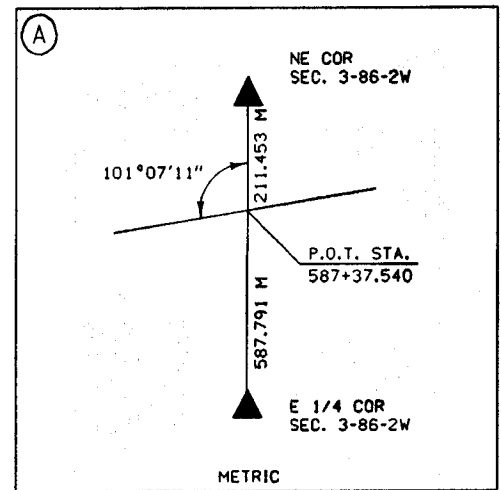
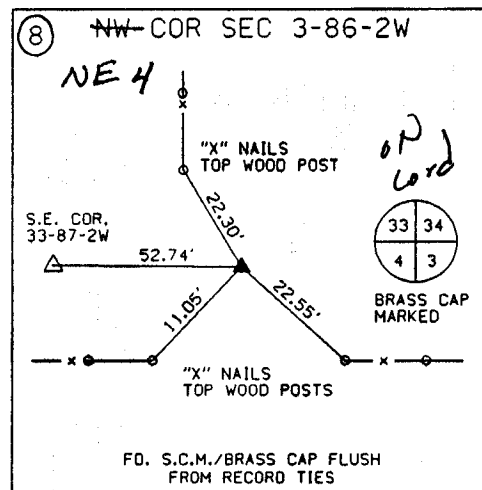
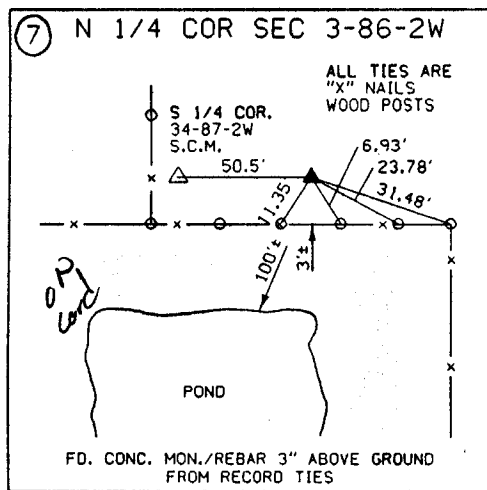
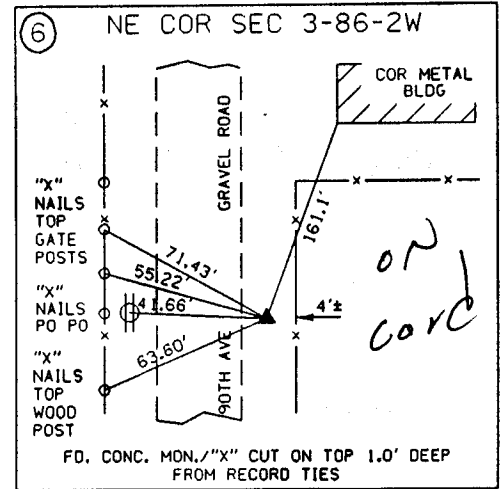
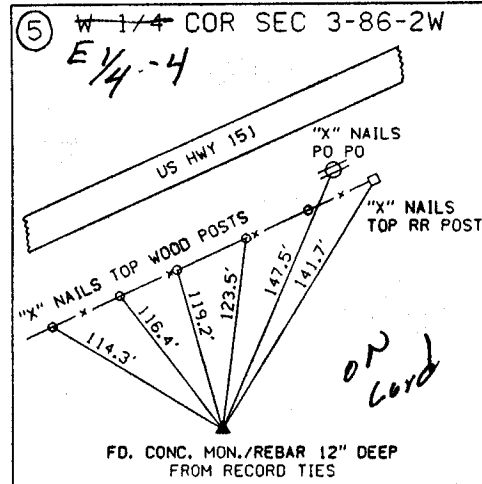
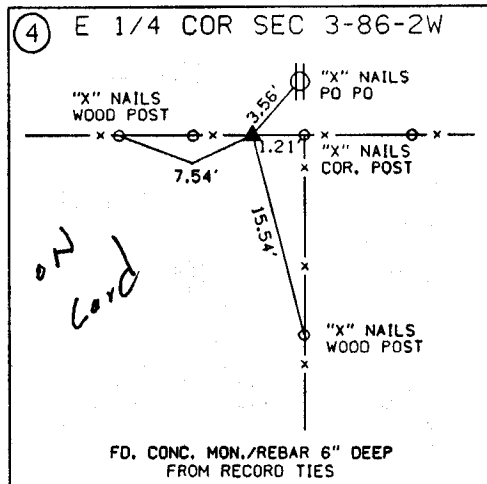
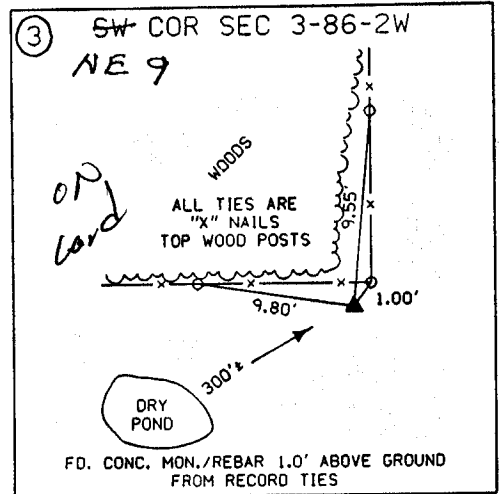
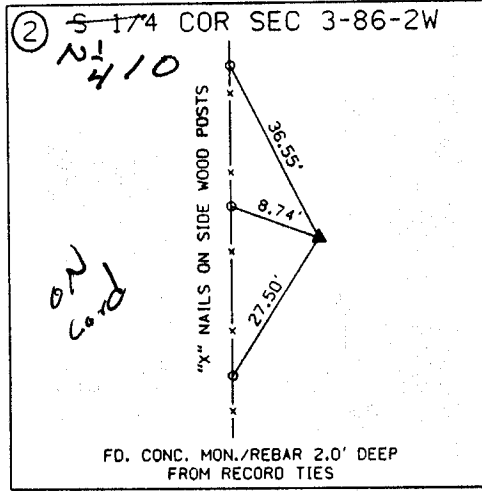
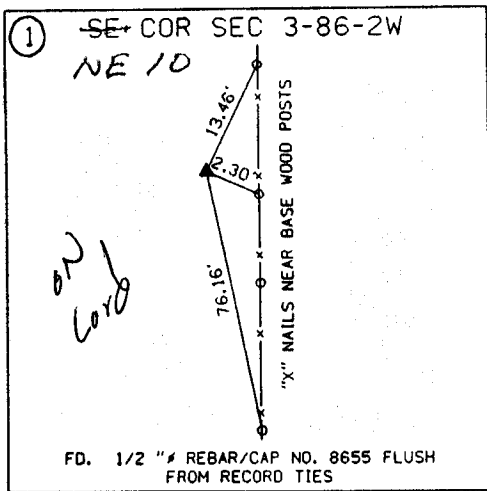


UNITED STATES PUBLIC SECTION CORNER CERTIFICATION  
 AND LAND CORNER SURVEY  
 SECTION 3 T-86N R-2W

1-10-97

MADE FOR

IOWA DEPARTMENT OF TRANSPORTATION FOR THE PURPOSE OF  
 RIGHT OF WAY DESCRIPTIONS ON PRIMARY ROAD No. U.S. 151



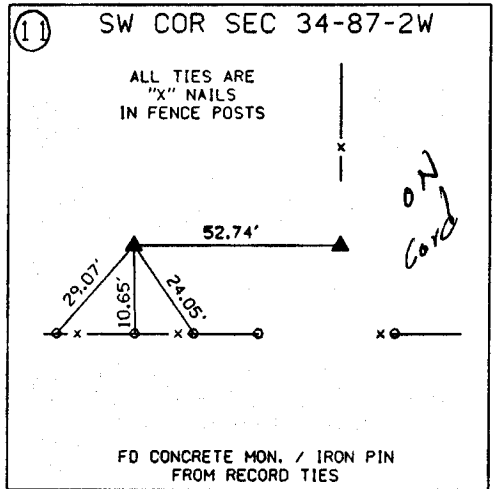
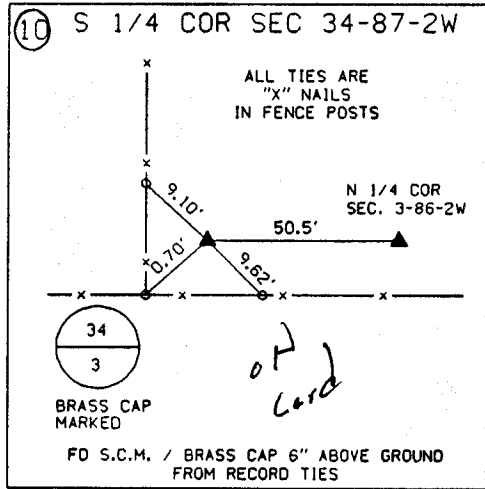
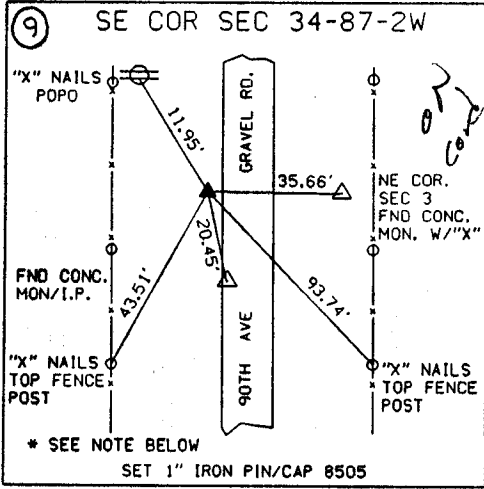
UNITED STATES PUBLIC SECTION CORNER CERTIFICATION  
AND LAND CORNER SURVEY

SECTION 34 T-87N R-2W

MADE FOR

1-10-97

IOWA DEPARTMENT OF TRANSPORTATION FOR THE PURPOSE OF  
RIGHT OF WAY DESCRIPTIONS ON PRIMARY ROAD No. U.S. 151



NOTES :

SET THE SE CORNER OF SEC. 34-87-2W  
35.66 FEET WEST OF THE NE COR. OF  
SEC. 3-86-2W FROM CHAINING NOTES.