

# UNITED STATES PUBLIC LAND SURVEY CORNER CERTIFICATE

Land Survey Monuments situated in Section 11, Township 86NORTH, Range 2 WEST, of the Fifth Principal Meridian, Jones County, Iowa. Previously recorded in NA in County Recorder's Office.

Monument Description and Remarks: (No Corner Certificates found at the County Recorders Office)

### NW CORNER NE1/4 NW1/4

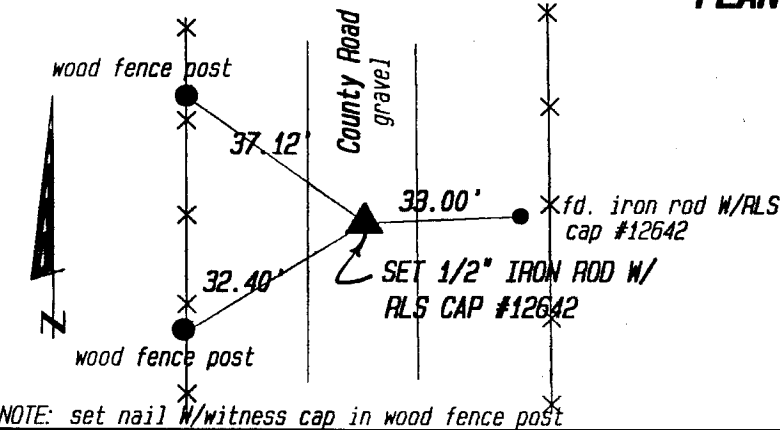
set 1/2" iron rod w/RLS cap #12642 on line and mid way between the NW Corner and the NE Corner of the NE1/4 NW1/4

SW CORNER NE1/4 NW1/4 set 1/2" iron rod w/RLS cap #12642 at the point of intersection of running straight lines from opposite 1/4 1/4 corner of the NW1/4 of said section 11

### SE CORNER NE1/4 NW1/4

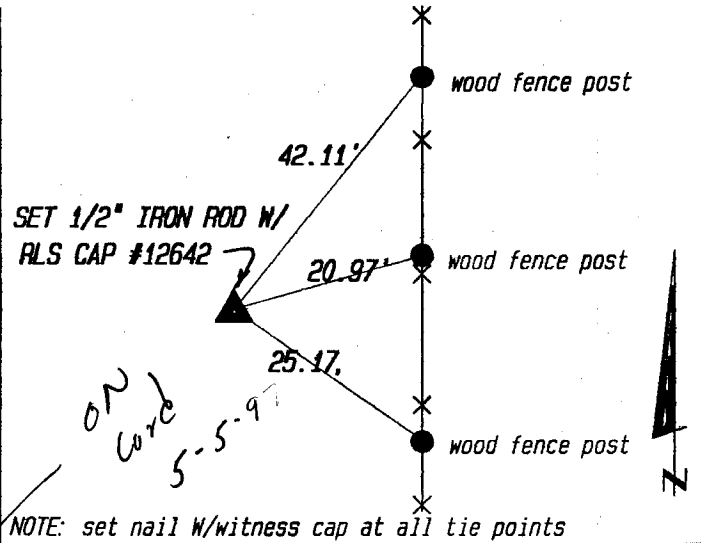
set 1/2" iron rod w/RLS cap #12642 on line and mid way between the NE1/4 Corner and the Center of Section 11

### NW CORNER NE1/4 NW1/4

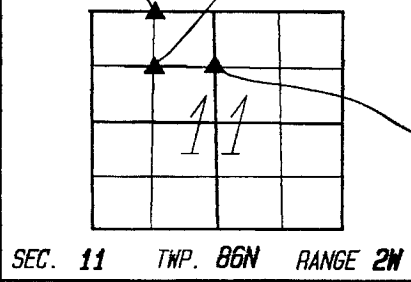
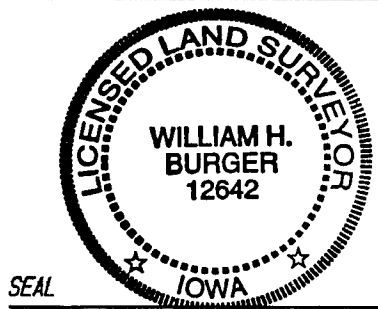
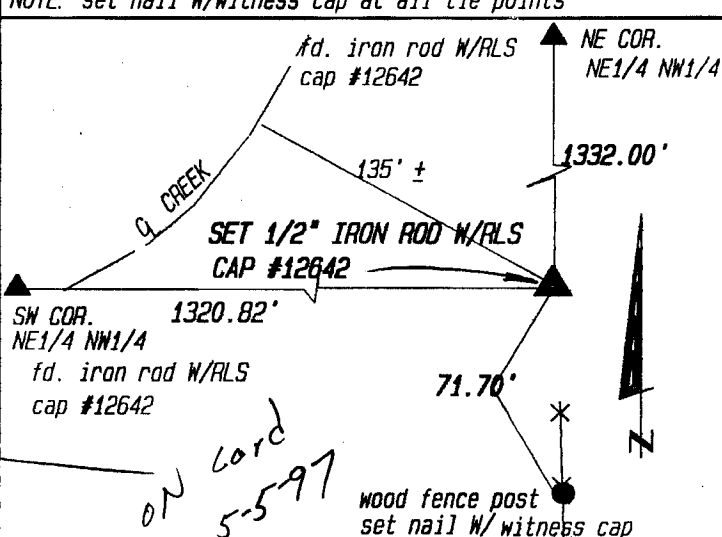


### PLAN VIEW

### SW CORNER NE1/4 NW1/4



*ON card 5-8-97*



### SE CORNER NE1/4 NW1/4

I hereby certify that this land surveying document was prepared and related survey work was performed by me or under my direct personal supervision and that I am a duly licensed Land Surveyor under the laws of the State of Iowa.

William H. Burger 1/1/97  
William H. Burger Date

License number 12642

My license renewal date is December 31, 1998

Pages or Sheets covered by this seal: Sheet 1 of 1

### CORNERS TO BE INDEXED

Corner

NW NE1/4 NW1/4	Section <u>11</u>	Twp <u>86N</u>	Range <u>2W</u>
SW NE1/4 NW1/4	Section <u>11</u>	Twp <u>86N</u>	Range <u>2W</u>
SE NE1/4 NW1/4	Section <u>11</u>	Twp <u>86N</u>	Range <u>2W</u>
_____	Section _____	Twp _____	Range _____

# COPY