

1999 1344

FILED
RECORDERS OFFICE
JONES COUNTY IOWA

99 APR 14 AM 10:03

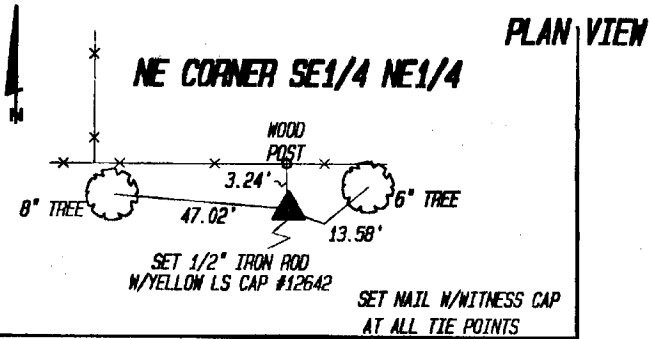
MARIE KRUTZFIELD
RECORDER 600 PD

Prepared by Wm. Burger Land Surveyors 510 3rd Street West Court, Worthington, Iowa Phone 319 - 855 2028

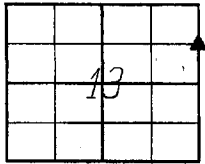
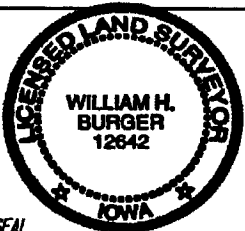
UNITED STATES PUBLIC LAND SURVEY CORNER CERTIFICATE

Land Survey Monuments situated in Section 13, Township 86N, Range 2W, of the Fifth Principal Meridian, Jones County, Iowa. Previously recorded in N/A in County Recorder's Office.

Monument Description and Remarks: (No Corner Certificates found at the County Recorders Office)
NE CORNER SE1/4 NE1/4 - SET 1/2" IRON ROD W/LS CAP #12642 ON LINE AND MIDWAY BETWEEN THE NE CORNER AND THE
E1/4 CORNER OF SAID SECTION 13



✓



SEAL SEC. 13 TWP. 86N RANGE 2W

I hereby certify that this land surveying document was prepared and related survey work was performed by me or under my direct personal supervision and that I am a duly licensed Land Surveyor under the laws of the State of Iowa.

William H. Burger 4/5/99
 William H. Burger Date
 License number 12642
 My license renewal date is December 31, 2000
 Pages or Sheets covered by this seal: Sheet 1 of 1

CORNERS TO BE INDEXED

Corner	Section	Twp	Range
NE CORNER SE1/4 NE1/4	Section <u>13</u>	Twp <u>86N</u>	Range <u>2W</u>
_____	Section _____	Twp _____	Range _____
_____	Section _____	Twp _____	Range _____
_____	Section _____	Twp _____	Range _____