

Instrument #: 2016-3309  
 11/21/2016 04:02:24 PM Total Pages: 1  
 ZSC SECTION CORNER CERTIFICATE  
 Recording Fee: \$7.00 Transfer Tax: \$0  
 Sheri L. Jones, Recorder, Jones County Iowa



PREPARED BY: MICHAEL J. WEBER, WEBER SURVEYING, LLC, 26789 46TH AVE, BERNARD, IA 52032 (563) 879-4173

## UNITED STATES PUBLIC LAND SURVEY CORNER CERTIFICATE OF

LAND SURVEY MONUMENTS SITUATED IN SECTION 15, TOWNSHIP 86 NORTH, RANGE 2 WEST  
 OF THE FIFTH PRINCIPAL MERIDIAN, JONES COUNTY, IOWA.  
 PREVIOUSLY RECORDED BOOK 333 PAGE 162

(book, page, document number, etc.)

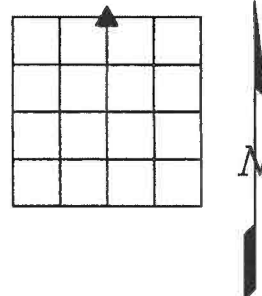
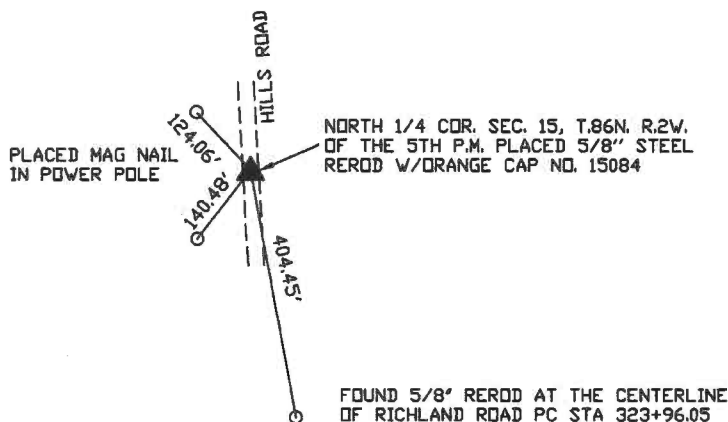
(Show reason for preparing this certificate, the evidence and detailed procedures used in establishing the corner positions and monumentation found or placed.)

**Monument Description and Remarks:**

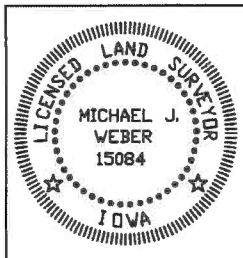
-NORTH 1/4 COR. PLACED 5/8" STEEL REROD W/ORANGE PLASTIC CAP MARKED "WEBER PLS 15084". ESTABLISHED CORNER AT THE LOCATION AS SHOWN IN PLAT BOOK K PAGE 180 AND EASEMENT FOR PUBLIC HIGHWAY SHOWN IN DOC. NO. 2012 2223.

(Show a minimum of three reference ties to durable physical objects, relevant monuments and physical conditions that will enable recovery of the corner.)

### PLAN - VIEW



DWG. NO. 16064



I HEREBY CERTIFY THAT THIS LAND SURVEYING DOCUMENT WAS PREPARED AND THE RELATED SURVEY WORK WAS PERFORMED BY ME OR UNDER MY DIRECT PERSONAL SUPERVISION AND THAT I AM A DULY LICENSED LAND SURVEYOR UNDER THE LAWS OF THE STATE OF IOWA.

*Michael J. Weber* November 14, 2016  
 MICHAEL J. WEBER (DATE)

LICENSE NUMBER 15084  
 MY LICENSE RENEWAL DATE IS DECEMBER 31, 2017

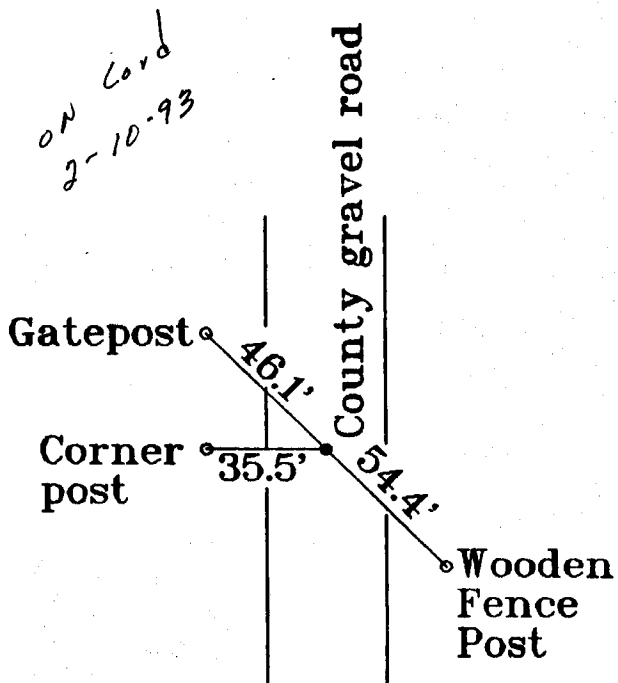
SHEETS COVERED BY THIS SEAL: Sheet 1

List Corners to be Indexed  
 Corner                      Sec Twp Range

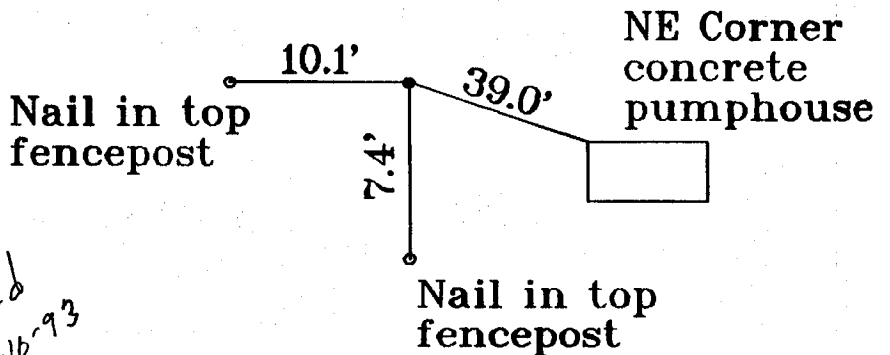
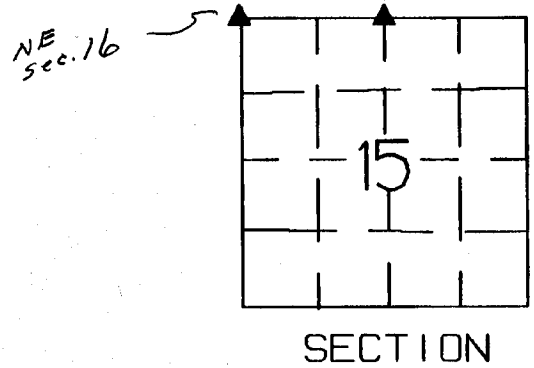
NORTH 1/4 CDR. 15 86N 2W

# United States Public Land Survey Corner Certificate

Land survey monument located in Section 15, Township 86 North,  
Range 2 West of the 5th Principal Meridian, Jones County, Iowa



N 1/4 Corner Sec 15-86-2  
Fnd 5/8" I.P. 6" deep



NW Corner Sec 15-86-2  
Fnd 5/8" I.P. Ground level

*NE Sec. 16*

### Certification

I hereby certify that this plot and survey was made by me or under my direct supervision and that I am a duly Registered Land Surveyor under the laws of the State of Iowa.

Harold E. Dillon 2/8/93  
Harold E. Dillon Reg.#6581 date

