

COPY

Jones County Marie Krutzfield Recorder  
 Fee Book 2012 1406  
 05/17/2012 @1034AM # Pages 1  
 ZSC SEC COR CERT  
 Total Fees: \$0.00

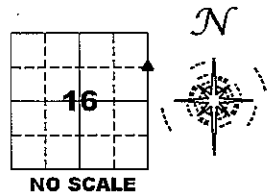
PREPARED BY  
 CLARENCE J. WALTON, JONES COUNTY ENGINEER'S OFFICE, 19501 HWY. 64, ANAMOSA, IOWA, 52205 (319) 462-3785

# UNITED STATES PUBLIC LAND SURVEY CORNER CERTIFICATE

LAND SURVEY MONUMENTS SITUATED IN SECTION 16, TOWNSHIP 86 NORTH,  
 RANGE 2 WEST OF THE 5TH PRINCIPAL MERIDIAN, JONES COUNTY, IOWA.

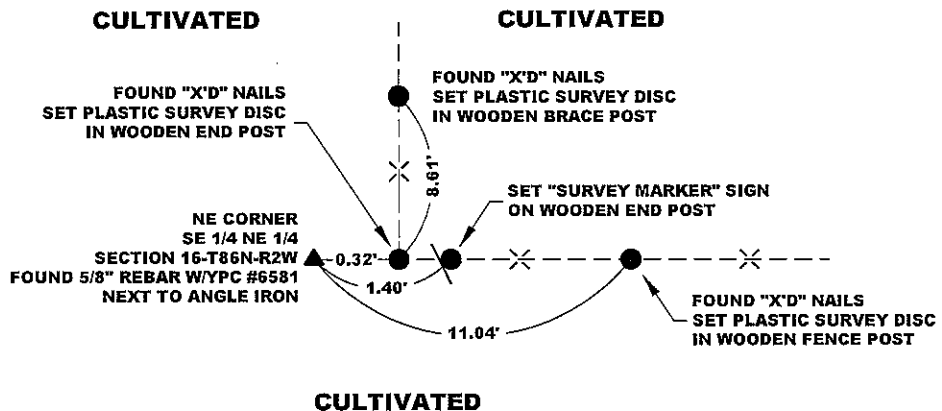
STATE PLANE COORDINATE  
 NAD 83 IOWA NORTH  
 N 3568413.59  
 E 5578125.43

CORNER SECTION TOWNSHIP RANGE  
 NE CORNER 16 T86N R2W  
 SE 1/4 NE 1/4



NOTES:

- 1) THE STATE PLANE COORDINATES AS SHOWN ARE FOR CONVENIENCE ONLY. THE TIES AS SHOWN SHOULD BE USED TO REPLACE THE CORNER, IF DESTROYED.
- 2) COORDINATES AS SHOWN ARE GRID COORDINATES AND BASED ON JONES COUNTY G.P.S. CONTROL NETWORK WHICH IN TURN IS BASED ON NAD 83 IOWA NORTH DATUM.
- 3) ALL MEASUREMENTS ARE IN FEET AND DECIMALS THEREOF.
- 4) \* GRID DISTANCE, BASED ON JONES COUNTY G.P.S. CONTROL NETWORK.



"SURVEY MARKER" SIGN



SURVEY DISC



LEGEND

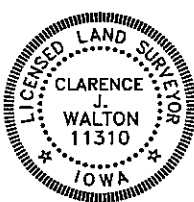
- OPC ORANGE PLASTIC CAP
- YPC YELLOW PLASTIC CAP
- ( ) PREVIOUSLY RECORDED AS
- STEEL FENCE POST W/ "SURVEY MARKER" SIGN

PREVIOUSLY RECORDED IN N/A

PAGE 1 of 1

MONUMENT DESCRIPTION AND HOW ESTABLISHED FOUND 5/8" REBAR WITH YELLOW PLASTIC CAP # 6581 FLUSH WITH PRESENT EXISTING GROUND WITH ANGLE IRON STAKE ALONG SIDE. REFERENCE PLAT OF SURVEY OF PARCEL 94-23 IN PLAT BOOK K, PAGE 180 AND IN BOOK 363, PAGE 254 IN THE THE JONES COUNTY, IOWA RECORDER'S OFFICE. SET "SURVEY MARKER" SIGN ON END POST TO SERVE AS A WITNESS TO THE FOUND REBAR.

FIELD BOOK 341, PAGE 56 DATE OF SURVEY: 4/26/12



I hereby certify that this land surveying document and the related survey work was performed by me or under my direct personal supervision and that I am a duly registered Land Surveyor under the laws of the State of Iowa.  
 Signed: *Clarence J. Walton* 5/16/12  
 Clarence J. Walton, L.S.  
 My Registration Renewal Date is December 31, 2013  
 Iowa License Number 11310  
 Pages or sheets covered by this seal: 1 of 1.

- A. THERE IS NO CERTIFICATE FOR THE CORNER ON FILE WITH THE RECORDER OF THE COUNTY IN WHICH THE CORNER IS LOCATED.
- B. THE CORNER MONUMENT HAS BEEN REPLACED OR MODIFIED.
- C. THE SURVEYOR IN RESPONSIBLE CHARGE OF THE LAND SURVEYING ACCEPTS A CORNER POSITION THAT DIFFERS FROM THAT SHOWN IN THE PUBLIC RECORDS OF THE COUNTY IN WHICH THE CORNER IS LOCATED.
- D. THE REFERENCE TIES REFERRED TO IN AN EXISTING PUBLIC RECORD NO LONGER EXIST.
- E. THIS CERTIFICATE FILED TO CORRECT PREVIOUS CERTIFICATE.

CORNERS TO BE INDEXED

CORNER	SECTION	TOWNSHIP	RANGE
NE CORNER	16	86N	2W
SE 1/4 NE 1/4	16	86N	2W
SE CORNER	16	86N	2W
NE 1/4 NE 1/4	15	86N	2W
SW CORNER	15	86N	2W
NW 1/4 NW 1/4	15	86N	2W
NW CORNER	15	86N	2W
SW 1/4 NW 1/4	15	86N	2W

JONES COUNTY ENGINEER'S OFFICE



19501 HWY. 64, ANAMOSA, IOWA 52205  
 (319) 462-3785