

2006 0817

FILED
RECORDERS OFFICE
JONES COUNTY IOWA

06 MAR -7 AM 9:55

MARIE KRUTZFIELD
RECORDER 7.00 pd

PREPARED BY: J. DAVID GIBBS 105 WEST MAIN STREET MANCHESTER, IA 52057. 563-927-2434

UNITED STATES PUBLIC LAND SURVEY CORNER CERTIFICATE OF

Land Survey Monuments situated in Section 16, Township T86N, Range R2W, of the Fifth Principal Meridian, Jones County, Iowa. Previously recorded in Not Recorded in County Recorder's Office.

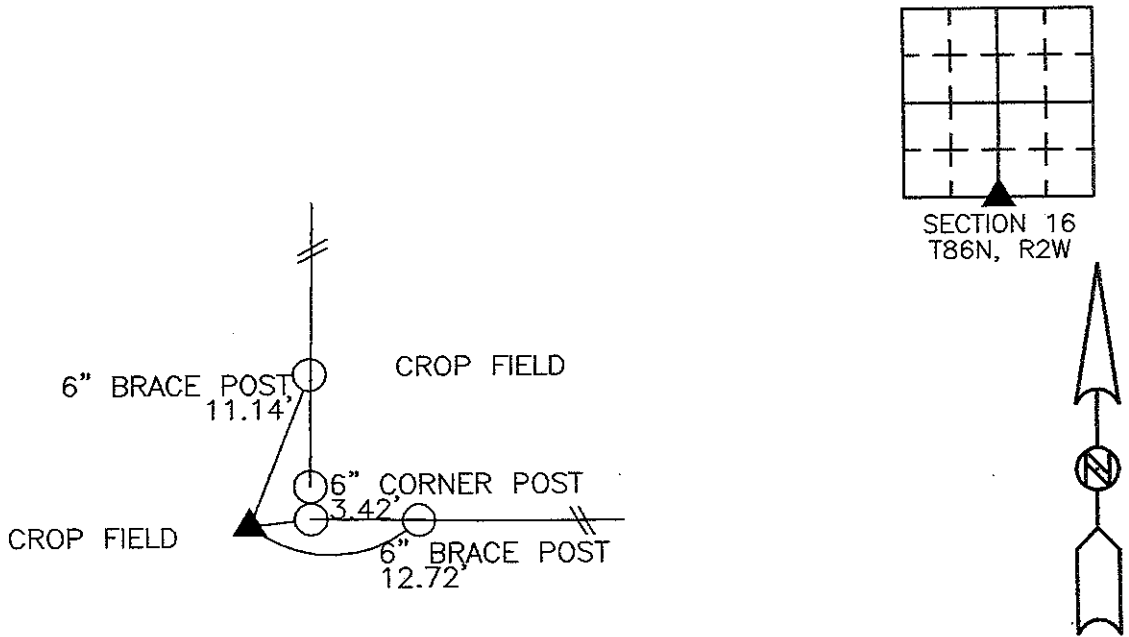
(book, page, document number, etc.)

(Show reason for preparing this certificate, the evidence and detailed procedures used in establishing the corner positions monumentation found or placed.)

Monument Description and Remarks: S 1/4 Corner, Set 1/2" Rebar w/Orange Cap #8419, using the midpoint of a line drawn from fence corner at SE Corner and intersection of fencelines to determine the SW Corner, created a line from N 1/4 Corner to this midpoint and extended southerly to match fence corner. Point falls approx. 3' west of fence corner.

PLAN VIEW

(Show a minimum of three reference ties to durable physical objects, relevant monuments and physical conditions that will enable recovery of the corner.)



**S 1/4 CORNER
SET 1/2" REBAR W/ORANGE CAP #8419
ALL DIMENSION FROM NAIL W/WITNESS CAPS**

TIES ARE TO CORNERS IN PLAT OF PARCEL #2006-20, SEC. 16, T86N, R2W. G.E.S. #05-91

I hereby certify that this land surveying document was prepared and the related survey work was performed by me or under my direct personal supervision and that I am a duly licensed land surveyor under the laws of the State of Iowa.

Signature J. David Gibbs
J. David Gibbs

Seal

Date 3/7/06 Lic. No. 8419
My license renewal date is December 31, 2006



List Corners to be Indexed:

Corners	Section	Township	Range
S 1/4 Corner	16	T86N	R2W

THIS IS NOT A CERTIFICATION

JF

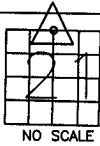
JONES COUNTY ENGINEER'S OFFICE, 19501 HWY. 64, ANAMOSA, IOWA, 52205 (319)462-3785

UNITED STATES PUBLIC LAND SURVEY CORNER CERTIFICATE

LAND SURVEY MONUMENTS SITUATED IN SECTION 21, TOWNSHIP 86
NORTH, RANGE 2 WEST OF THE 5TH P.M., JONES COUNTY, IOWA

CORNERS TO BE INDEXED

CORNER SECTION TOWNSHIP RANGE
N-QUARTER 21 86N 2W



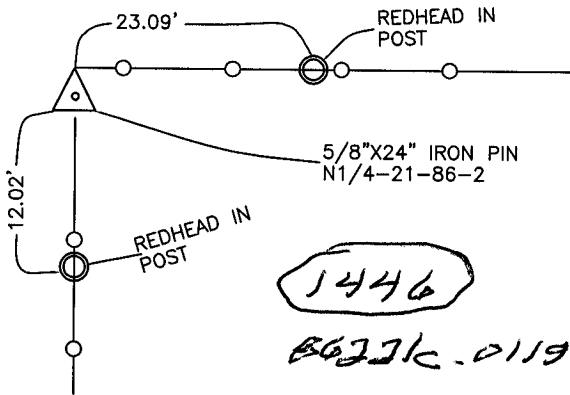
NO SCALE

OFFICE FILE NO.

86221c_081904.tif

REF:
JONES COUNTY SURVEY CREW
POWELL-BECKMANN-HAUGLIE
6-24-88
FM-53(12) BK 309 P-41

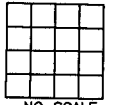
DRAWN:
8-19-04



PREVIOUSLY RECORDED IN BOOK _____, PAGE _____
MONUMENT DESCRIPTION AND HOW ESTABLISHED SET OR FOUND
NOT INDICATED ON TIE SHEET. JONES COUNTY SURVEY CREW TIED,
6-24-88. NORTH QUARTER CORNER SECTION 21, TOWNSHIP 86
NORTH, RANGE 2 WEST OF THE 5T PRINCIPAL MERIDIAN, JONES
COUNTY, IOWA. DT

CORNERS TO BE INDEXED

CORNER SECTION TOWNSHIP RANGE



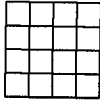
NO SCALE

OFFICE FILE NO.

PREVIOUSLY RECORDED IN BOOK _____, PAGE _____
MONUMENT DESCRIPTION AND HOW ESTABLISHED _____

CORNERS TO BE INDEXED

CORNER SECTION TOWNSHIP RANGE



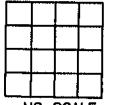
NO SCALE

OFFICE FILE NO.

PREVIOUSLY RECORDED IN BOOK _____, PAGE _____
MONUMENT DESCRIPTION AND HOW ESTABLISHED _____

CORNERS TO BE INDEXED

CORNER SECTION TOWNSHIP RANGE



NO SCALE

OFFICE FILE NO.

PREVIOUSLY RECORDED IN BOOK _____, PAGE _____
MONUMENT DESCRIPTION AND HOW ESTABLISHED _____

~~I hereby declare that this plat, survey or report was made by me or under my direct personal supervision and that I am a duly registered Land Surveyor under the laws of the State of Iowa.~~

Signed: _____

SEAL

JONES COUNTY
ENGINEER'S OFFICE

19501 HWY. 64,
ANAMOSA, IOWA,
52205 (319)462-3785